

Blackberry Operation System

(Software Installation and Operation)

System requirements :

Mobile Device operation platform : Blackberry 9000, Blackberry 9500

Internet needed for Mobile device operation platform (GPRS/ 3G/ Wifi...etc.)

1-1 Software installation

In order to remote log in to DVR to live monitoring through mobile device, first of all, please follow the instructions for software installation:

Step 1: Visit Blackberry official website

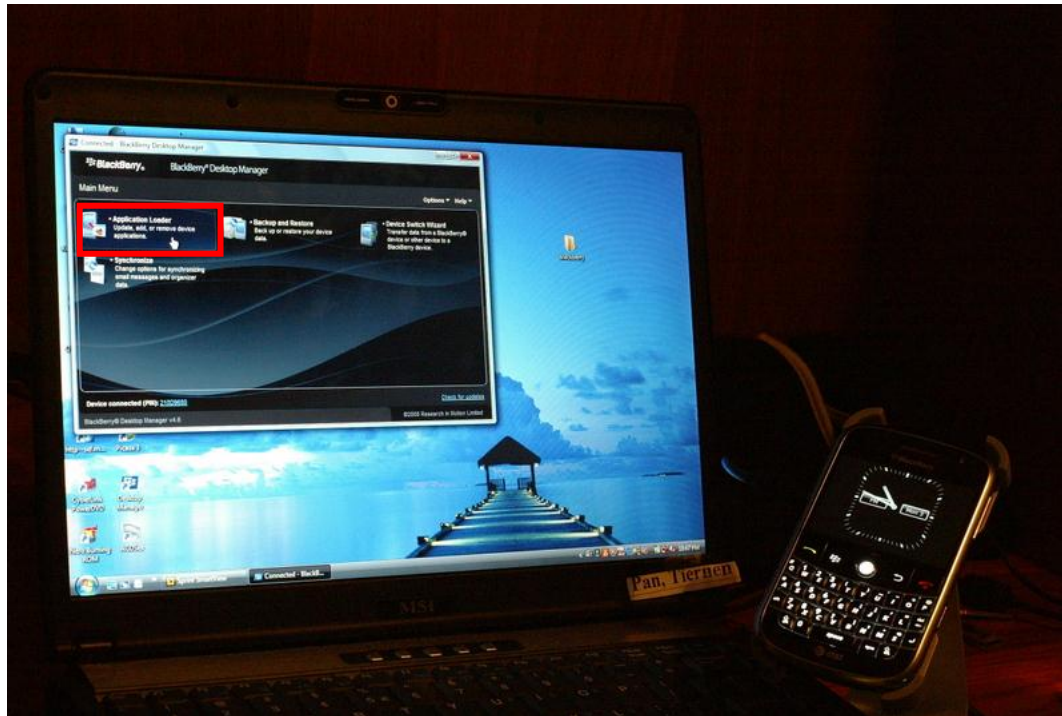
<http://na.blackberry.com/eng/services/desktop/> www.blackberry.com.

Download Blackberry Desktop Manager and install it in PC

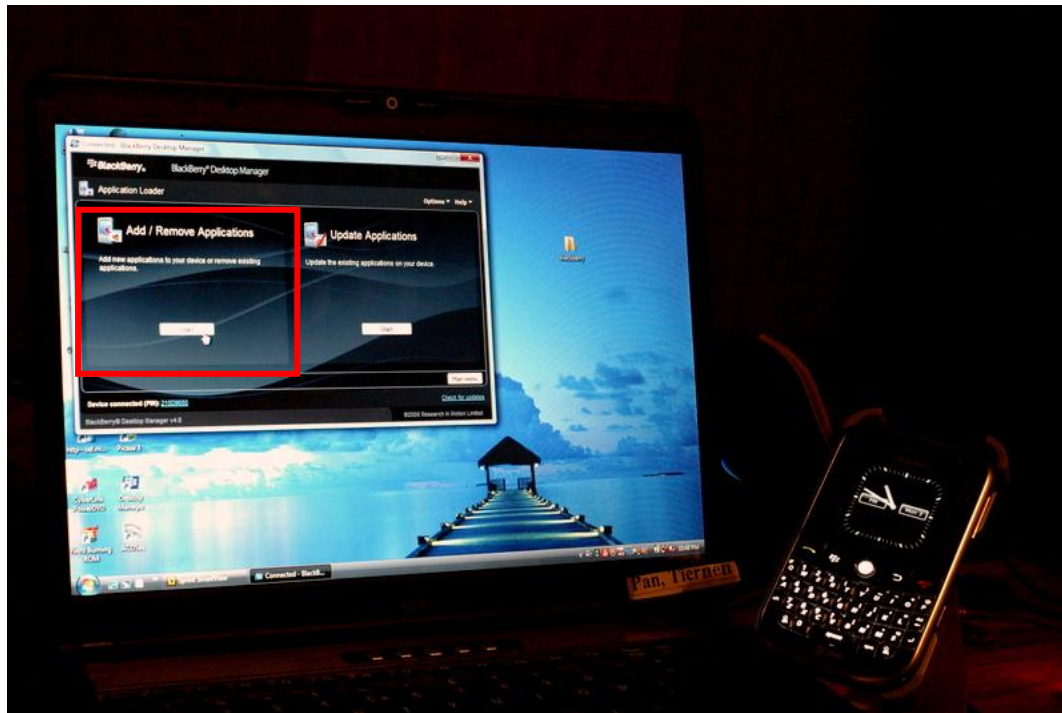
Step 2: Connect Blackberry USB transmission cable to Blackberry and PC. Activate Blackberry Desktop Manager on PC and it will automatically connect to Blackberry momentarily.



Step 3 : Execute "Application Loader"



Step 4: Execute "Add/Remove Applications"

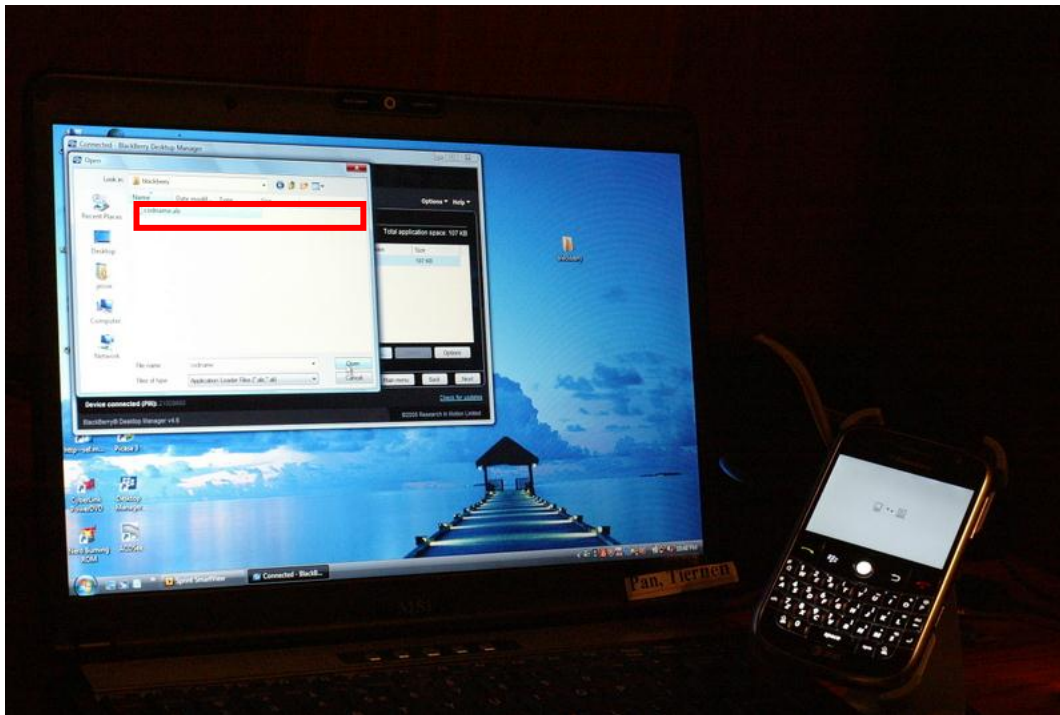


Step 5: Please copy "dvrh264.alx" and "dvrh264.cod" to PC.
The software is available on webpage or in the User CD that comes with each of DVR.



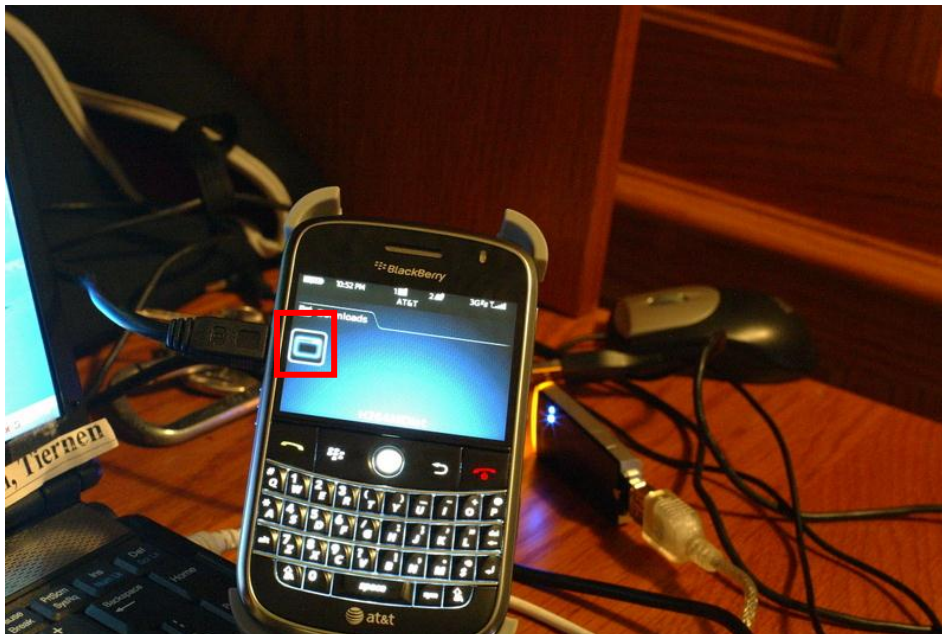
Step 6: Find "dvrh264.alx" in Blackberry Desktop Manager. After activating the software, press

“Next.” The software will be installed in Blackberry automatically. Remove USB cable after installation.



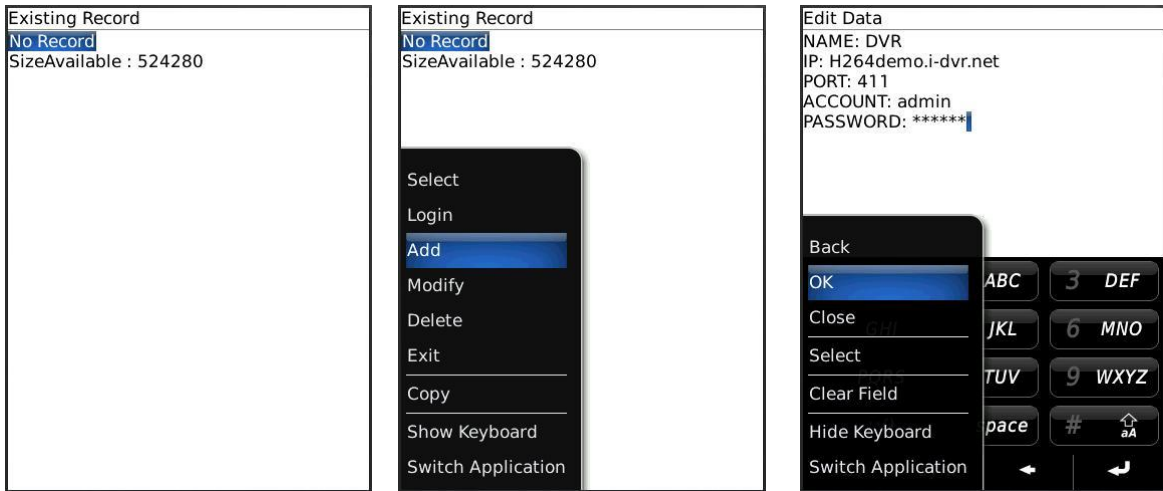
1-2 Software operation

After the software is installed completely, enter “Download” menu in the mobile device and execute program, “H264MIDlet”



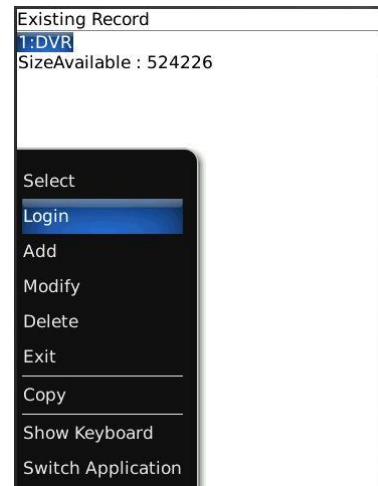
1-2.1 Add new log-in DVR

In order to connect to DVR, please input DVR information to the mobile device. Press "option" → "Add", and then enter "DVR IP," "port," "log-in account," and, "log-in password." Press "ok" to save.

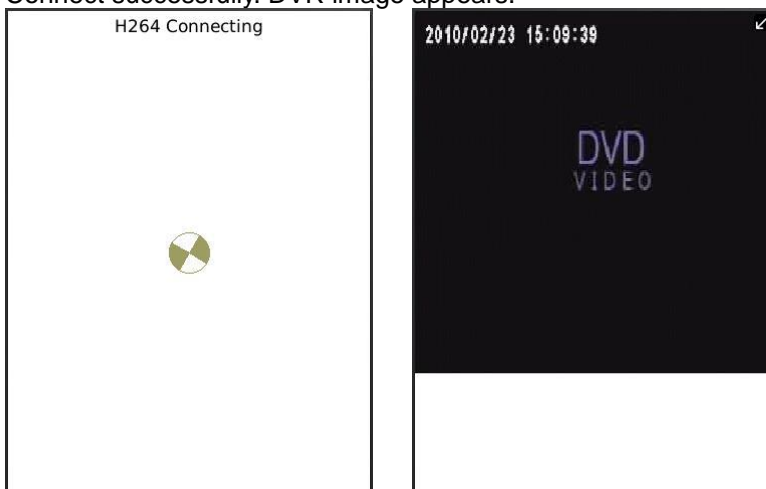


1-2.2 Log in onto the DVR

Multiple DVR information can be saved with this software, therefore, please choose the DVR that's wished to be connected. Press "Option" → "Login" to log in to DVR for live monitoring.



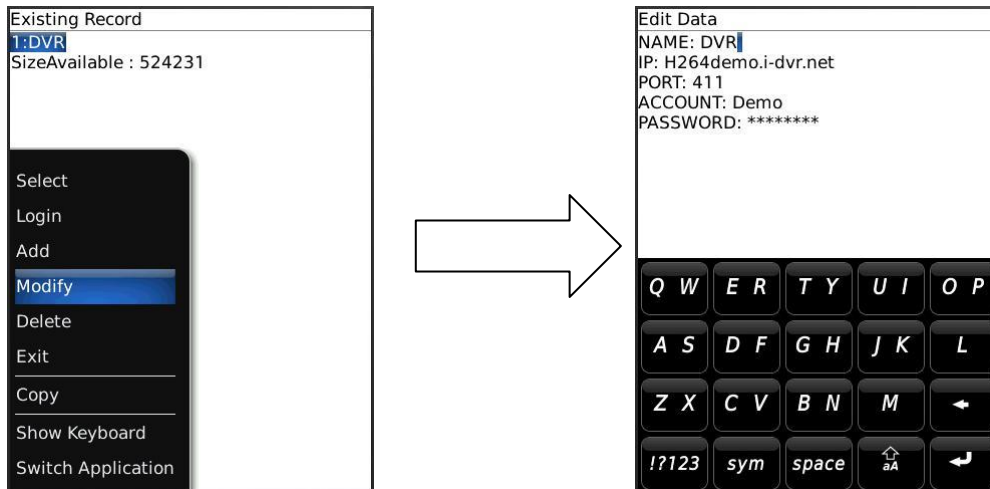
Connecting time depends on the Internet transmission environment. Connect successfully. DVR image appears.



Note : If recording function isn't on for any channel in DVR end, that channel will not be available for live monitoring.

1-2.3 Modify the Login Information of DVR

If DVR log-in information is wished to be modified, please select the DVR. Enter “Option” → “Modify” for editing the existing data. Press “OK” when it’s finished.



1-2.4 Delete DVR Existing Record (Connection Information)

If DVR connection information is no longer needed, please select the DVR. Press “Option” → “Delete” to delete the DVR connection information.



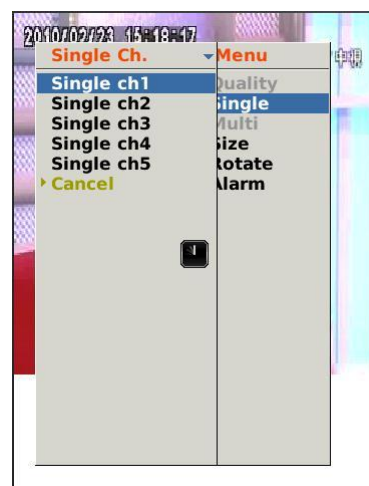
1-3 Live Image Operation

After successfully connecting to DVR, single channel view, image display changes, image quality adjustments, alarm on/off features ... etc. are available through the software.

1-3.1 Live Image Display

When viewing live images, please select “Single.” There is channel 1 to 16 available.

Note : If recording function isn't on for any channel in DVR end, that channel will not be available for live monitoring.



1-3.2 Image size

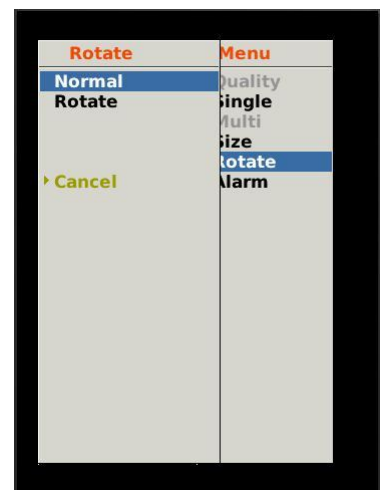
Due to the variety sizes of mobile device screens, this software offers two different methods for image display. Press “Size” in menu, and then there will be options, “Original” and “Fit Screen” available to choose from.



Option	Description
Original	Image appears as its original size.
Fit Screen	Image appears to be the most optimized size according to the screen.




1-3.3 Image Rotation

There are two options for live image display. One is to appear as its original image, or to rotate the image by 90 degrees. Press “Rotate” in menu and there will be options, “Normal” and “Rotate” available to choose from.



1-3.4 Alarm

Besides DVR live monitoring, alarm feature is also available through this software. If events like, Motion Detection, Sensor Detection, VLOSS ...etc. occur, there will be alarm sound and alarm images appear on the status.

Icon	Description
	Motion Detection
	Sensor Detection
	VLOSS

Press “Alarm” in menu, there will be options, “Alarm OFF” and “Alarm ON” available to choose from.

