

AnyTone®

Anytime Anywhere Anytone!



We only do the best!



CATALOG

- Digital Mobile/Handheld Radio
- Multi-band Mobile/Handheld Radio
- Dual Band Mobile/Handheld Radio
- Single Band Mobile Radio
- 10 METER Radio/Citizen Band Radio
- Particular Handheld Radio
- Commercial Handheld Radio
- Amateur Handheld Radio
- Repeater and Duplexer
- Cellphone Repeater Series
- All Kinds Of Accessories



OVERVIEW

Since 1993, we are specializing in the design and production of wireless communication products. Our 30-member R&D team has regularly developed new products and completed OEM/ODM projects for Two Way Radios, Mobile Radios, CB Radios, Marine Radios, Digital Radios, GSM/CDMA/DCS/PCS/3G/GPS Repeater & Jammer, 2.4G Module, Fiber Module etc.



Radio Series	1~28
Digital Mobile Radio	1
Digital Handheld Radio	2~5
Multi-band Mobile Radio.....	6
Multi-band Handheld Radio.....	7
Dual Band Mobile Radio.....	8
Dual Band Handheld Radio.....	9~10
Single Band Mobile Radio.....	11~13
10 METER Radio/Citizen Band Radio.....	14~16
Particular Handheld Radio.....	17~20
Commercial Handheld Radio.....	21~25
Amateur Handheld Radio.....	26~27
Repeater & Duplexer.....	28
Cellphone Repeater Series	29~39
Mini Repeater Series.....	29~39
All Kinds Of Accessories	41~42

Company honour

We only do the best!



Registration Certificate

Registration Certificate

588 CE

5189 CE



3308 FC

5189 FC

AT-700/800 RoHS

588 RoHS

588UV RoHS



Radio Series

- Digital Mobile/Handheld Radio
- Multi-band Mobile/Handheld Radio
- Dual Band Mobile/Handheld Radio
- Single Band Mobile Radio
- 10 METER Radio/Citizen Band Radio
- Particular Handheld Radio
- Commercial Handheld Radio
- Amateur Handheld Radio
- Repeater and Duplexer



• Digital Mobile Radio



AT-D5888UV Digital Dual Band Mobile Radio

Format: DPMR or DMR(Direct Mode)

Frequency Range:

(RX) FM: 136~174MHz, 200~260MHz, 350~400MHz, 400~520MHz

AM: 118~134MHz (Air Band)

(TX) FM: 136~174MHz, 400~490MHz

Function:

- Operates in DPMR or DMR and FM Analogue modes at the same time when receive.
- Autosenses Received Mode (Digital or Analogue).
- Working Mode: Full duplex on UU,UV,VV,UV or VU as repeater mode.
- Dual Receive: Consist with A & B band.
- Output Power: 55W/40W/10W/5W
- 758 memory channels.
- CTCSS + DCS + DTMF + 2Tone/5Tone encode and decode.
- Bandwidth: 25KHz/12.5KHz/6.25KHz.
- Componder.
- Digital scramble function be programmed.
- Channel Step: 2.5/5/6.25/10/12.5/15/20/25/50KHz.
- ANI function (DTMF/ANI, 5-Tone/ANI)/PTT ID.
- Individual Call, Group call, All call.
- DTMF Microphone.
- GPS speaker-microphone(option).
- Bluetooth speaker-microphone(option).



• Digital Handheld Radio



AT-D468 Digital Dual band radio

Format: DPMR

Frequency Range:

- (RX) FM: 136~174MHz,400~520MHz,76~108MHz
AM: 118~134MHz (Air Band)
- Option: LW: 153~279KHz
MW: 520~1710KHz
SW: 2.3~26.1MHz
- (TX) FM: 134~174MHz, 400~480MHz

Function:

- Dual Receive and Dual Transmit.
- Operates in DPMR and FM Analogue modes at the same time when receive.
- Autosenses Received Mode (Digital or Analogue).
- Working Mode: UU,UV,VV. UV or VU as repeater mode.
- Dual Receive: Consist with A & B band.
- Output Power: 5W/2W/0.5W
- 128x48 LCD display.
- CTCSS+DCS+DTMF+2Tone+5Tone encode and decode.
- SquelchTail Elimination.
- Bandwidth:25KHz/12.5KHz/6.25KHz.
- Digital scramble function be programmed.
- SMS.
- Radio with Calendar.
- Channel Step: 2.5/5/6.25/10/12.5/15/20/25/50kHz
- Data Compander.
- Digital Compass (option).
- Barometric altimeter (option).
- GPS speaker-microphone (option).
- Built-in GPS (option).



AT-D268 Digital Dual band radio

Format: DPMR or DMR (Direct Mode)

TYPE A: Dual Receive and Dual Transmit

Frequency Range:

- (RX:) FM: 136~174MHz,400~520MHz
- (TX:) FM: 136~174MHz,400~480MHz

FM Radio: 76~108MHz

Type C: Dual Receive and Dual Transmit, as repeater mode.

Frequency Range:

- (RX:) FM: 136~174MHz, 400~520MHz
- (TX:) FM: 136~174MHz,400~480MHz

FM Radio:76~108MHz

Function:

- Operates in DPMR or DMR and FM Analogue modes at the same time when receive(Type C).
- Autosenses Received Mode (Digital or Analogue).
- 2 LED RX/TX Indicator for Digital and Analogue.
- Working mode:UU,UV,VV. U,V.
- 200 Channels.
- Output Power:5W/0.5W
- 51 groups+1 group user defined CTCSS+1024 group DCS encode and decode.
- DTMF+2Tone+5Tone encode and decode.
- Digital scramble function be programmed.
- SMS.
- Channel Step: 2.5/5/6.25/10/12.5/15/20/25/50kHz.
- Multi scan: VFO scan+channel scan+priority scan+CTCSS scan+DCS scan.
- VOX function.
- Bandwidth:25KHz/12.5KHz/6.25KHz.
- Squelch Tail Elimination.



• Digital Handheld Radio



AT-D158 **Digital Dual Band Radio**

Format: DPMR

TYPE A: Dual Receive or DMR(Direct Mode)

Frequency Range:

(RX:) FM: 136~174MHz,400~520MHz

(TX:) FM: 136~174MHz,400~480MHz

FM Radio: 76~108MHz

Functions:

- Autosenses Received Mode (Digital or Analogue).
- Working mode:UU,UV,VV, U,V.
- 200 Channels
- Output Power:5W/0.5W
- 51 groups+1 group user defined CTCSS+1024 group DCS encode and decode.
- Digital scramble function be programmed.
- SMS.
- Channel Step: 2.5/5/6.25/10/12.5/15/20/25/50kHz.
- Multi scan: VFO scan+channel scan+priority scan+CTCSS scan+DCS scan.
- Individual Call,Group call, All call.
- Bandwidth:25KHz/12.5KHz/6.25KHz.
- Squelch Tail Elimination.



AT-D168 **Digital Single Band Radio**

Format: DPMR

Frequency Range:

(RX:) FM: 136~174MHz,400~520MHz

(TX:) FM: 136~174MHz,400~480MHz

Function:

- Autosenses Received Mode (Digital or Analogue).
- 2 LED RX/TX Indicator for Digital and Analogue.
- Output power 4/5W. 16x8=128 channels.
- Voice announcement .
- CTCSS+DCS encode and decode.
- Multi-Scan mode: VFO scan+channel scan+priority scan+CTCSS scan+DCS scan.
- Individual Call,Group call, All call.
- Bandwidth:25KHz/12.5KHz/6.25KHz.
- Squelch Tail Elimination function.
- Battery power check up.



• Digital Handheld Radio

NEW



AT-D568 **Digital Single Band Radio**

Format: DPMPR or DMR (Direct Mode)

Frequency: 136~174MHz, 350~390MHz,
400~480MHz, 440~512MHz.

Functions:

- Autosenses Received Mode (Digital or Analogue).
- 2 LED RX/TX Indicator for Digital and Analogue.
- Output power 6W, 16X8=128 channels.
- Water protection class IP55, Voice announcement
- CTCSS+DCS encode and decode.
- Digital scramble function be programmed.
- SMS.
- Individual Call, Group call, All call.
- Multi-Scan mode: VFO scan+channel scan+priority scan+CTCSS scan+DCS scan.
- Bandwidth:25KHz/12.5KHz/6.25KHz.
- Squelch Tail Elimination function.



NEW



AT-D368 **Digital Single Band Radio**

Format: DPMPR or DMR (Direct Mode)

Frequency: (RX:) FM: 136~174MHz,400~520MHz
(TX:) FM: 136~174MHz,400~480MHz

Functions:

- Autosenses Received Mode (Digital or Analogue).
- 2 LED RX/TX Indicator for Digital and Analogue.
- Output power 4/5W, 16X8=128 channels.
- Water protection class IP55, Voice announcement
- CTCSS+DCS encode and decode.
- Digital scramble function be programmed.
- SMS
- Individual Call, Group call, All call.
- Multi-Scan mode: VFO scan+channel scan+priority scan+CTCSS scan+DCS scan.
- Bandwidth:25KHz/12.5KHz/6.25KHz.
- Squelch Tail Elimination function.



• Digital Handheld Radio(DMR)



NEW

FC CE RoHS

AT-D958 Digital Radio

Format: DMR (Direct Mode & Repeater mode)

Frequency:

RX:136~174MHz, 400~480MHz, 350~390MHz

TX:136~174MHz, 400~480MHz, 350~390MHz

Functions:

- Power: 5W/4W
- Channel:8x16=128
- Channel spacing: 6.25K/12.5/25KHZ
- Individual/Group/General Calling
- CTCSS/DCS
- SMS
- CO/TO/SE Scan be switched
- GPS (Option).



NEW

FC CE RoHS

AT-D968 Digital Radio

Format: DMR (Direct Mode & Repeater mode)

Frequency:

RX:136~174MHz, 400~480MHz, 350~390MHz

TX:136~174MHz, 400~480MHz, 350~390MHz

Functions:

- Power: 5W/4W
- Channel:8x16=128
- Channel spacing: 6.25K/12.5/25KHZ
- Individual/Group/General Calling
- CTCSS/DCS
- SMS
- CO/TO/SE Scan be switched
- GPS (Option).



NEW

FC CE RoHS

AT-D768 Digital Radio

Format: DMR (Direct Mode & Repeater mode)

Frequency:

RX:136~174MHz, 400~480MHz, 350~390MHz

TX:136~174MHz, 400~480MHz, 350~390MHz

Functions:

- Power: 5W/4W
- Channel:8x16=128
- Channel spacing: 6.25K/12.5/25KHZ
- Individual/Group/General Calling
- CTCSS/DCS
- CO/TO/SE Scan be switched
- GPS (Option).

• Multi-Band Mobile Radio



AT-5888UVIII Tri-Band Mobile Radio

Frequency Range:

1. RX:136~174MHz, 200~260MHz, 350~400MHz,400~520MHz
TX:136~174MHz, 200~260MHz, 400~490MHz
AM: 108~134MHZ (Airband)
2. RX: 66~88MHz,136~174MHz, 200~260MHz, 350~400MHz,400~520MHz
TX:136~174MHz, 400~490MHz, 66~88MHz
(RX:.)AM:108-134MHZ(Airband)

Function:

- Working Mode: Full duplex on UU,UV,VV. UV or VU as repeater mode.
- Dual Receive: Consist with A & B band.
- Output Power: 55W/40W/10W/5W
- 758 memory channels.
- CTCSS + DCS + DTMF + 2Tone/5Tone encode and decode.
- Bandwidth: 25/12.5KHz
- Comander.
- Scramble function (9groups fixed +2groups be defined by user).
- Channel Step: 2.5/5/6.25/10/12.5/15/20/25/50kHz
- ANI function (DTMF/ANI, 5-Tone/ANI)/PTT ID.
- DTMF Microphone.
- Option: DPMR, DMR(Direct Mode)
GPS/Bluetooth Microphone



AT-5888UVIV Quad-Band Mobile Radio

Frequency Range:

- RX: 25~30MHz, 66~88MHz,136~174MHz,200~260MHz,
350~400MHz, 400~520MHz
AM:108-134MHZ(Airband)
TX: 136~174MHz, 400~480MHz, 66~88MHz, 25~30MHz

Function:

- Working Mode: Full duplex on UU,UV,VV. UV or VU as repeater mode.
- Dual Receive: Consist with A & B band.
- Output Power: 55W/40W/10W/5W
- 758 memory channels.
- CTCSS + DCS + DTMF + 2Tone/5Tone encode and decode.
- Bandwidth: 25/12.5KHz
- Comander.
- Scramble function (9groups fixed +2groups be defined by user).
- Channel Step: 2.5/5/6.25/10/12.5/15/20/25/50kHz
- ANI function (DTMF/ANI, 5-Tone/ANI)/PTT ID.
- DTMF Microphone.
- Option: DPMR, DMR(Direct Mode)
GPS/Bluetooth Microphone



• Multi-Band Handheld Radio



**Real Dual Receive
Cross-band Repeater
Skip frequency
Airband
SMS**

AT-298UV **Dual Band Handheld Radio**

Dual Receive and Dual Transmit

Frequency Range:

- (RX:) FM: 136~174MHz, 400~480MHz, 220~260MHz
AM: 108-174MHz (air band)
(TX:) FM: 136~174MHz, 400~480MHz

FM Radio: 76-108MHz

Function:

- Working mode: UU, UV, VV, U, V.
- 200 Channels+2 groups VFO.
- Output Power: 6W/0.5W.
- Real Dual Receive.
- Cross Band repeater.
- 51 groups+1 group user defined CTCSS+1024 group DCS encode and decode.
- DTMF+2Tone+5Tone encode and decode.
- Multi scan: VFO scan+channel scan+priority scan+CTCSS scan+DCS scan.
- VOX function(10 levels) .
- Squelch Tail Elimination.
- SMS.



**Real Dual Receive
Cross-band Repeater
Skip frequency
Airband
SMS**

AT-298UVD **Tri-Band Handheld Radio**

Frequency Range:

- 1.RX: 136~174MHz, 400~520MHz, 220~225MHz
TX: 136~174MHz, 400~520MHz, 220~260MHz

FM Radio: 76-108MHz

(RX:) AM: 108-134MHz (Airband)

- 2.RX: 136~174MHz, 400~520MHz, 66~88MHz
TX: 136~174MHz, 400~480MHz, 66~88MHz

FM Radio: 76-108MHz

Function:

- Working mode: UU, UV, VV, U, V.
- 200 Channels+2 groups VFO.
- Output Power: 6W/0.5W.
- Real Dual Receive.
- Cross Band repeater.
- 51 groups+1 group user defined CTCSS+1024 group DCS encode and decode.
- DTMF+2Tone+5Tone encode and decode.
- Multi scan: VFO scan+channel scan+priority scan+CTCSS scan+DCS scan.
- VOX function(10 levels) .
- Squelch Tail Elimination.
- SMS.



• Dual-Band Mobile Radio



AT-5888UV Dual Band Mobile Radio

Frequency Range:

- (RX) FM: 134~174MHz, 200~260MHz, 350~400MHz, 400~520MHz
AM: 118~134MHz (Air Band)
- (TX) FM: 134~174MHz, 400~490MHz

Function:

- Working Mode: Full duplex on UU,UV,VV. UV or VU as repeater mode.
- Dual Receive: Consist with A & B band.
- Output Power: 55W/35W/10W/5W.
- 758 memory channels.
- CTCSS + DCS + DTMF + 2Tone/5Tone encode and decode.
- Bandwidth: Wide: 25KHz Narrow: 12.5KHz
- Componder.
- Scramble function (9groups fixed +2groups be defined by user).
- Channel Step: 2.5/5/6.25/10/12.5/15/20/25/50KHz.
- ANI function (DTMF/ANI, 5-Tone/ANI)/PTT ID.
- DTMF Microphone.



• Dual Band Handheld Radio



AT-398UV

TYPE A: Dual Receive and Dual Transmit

Frequency Range:

- (RX) FM: 136-174MHz 400-480MHz
- (TX) FM: 136-174MHz,400-480MHz

FM Radio: 76-108MHz

Type C: Dual Receive and Dual Transmit

Frequency Range:

- (RX) FM: 136-174MHz 400-480MHz,220-260MHz
- (TX) FM: 136-174MHz,400-480MHz

FM Radio:76-108MHz

Type D: Dual Receive and Dual Transmit

Frequency Range:

- (RX) FM:136-174MHz 400-480MHz,220-260MHz
- (TX) FM: 136-174MHz,400-480MHz
- (RX) AM:108-134MHz(Airband)

FM Radio: 76-108MHz

Function:

- Working mode:UU,UV,VV, VU,UV or UU as repeater mode(Type C,Type D).
- 200 Channels+2 groups VFO.
- Output Power:5W/0.5W
- 51 groups+1 group user defined CTCSS+1024 groups DCS encode and decode.
- DTMF+2Tone+5Tone encode and decode.
- Multi scan: VFO scan+channel scan+priority scan+CTCSS scan+DCS scan..
- VOX function(10 levels) Squelch Tail Elimination.
- Skip frequency be programmed (Type D only).
- SMS (Type D only).



AT-3318UV

TYPE A: Dual Receive and Dual Transmit

Frequency Range:

- (RX) FM: 136-174MHz 400-480MHz
- (TX) FM: 136-174MHz,400-480MHz

FM Radio: 76-108MHz

Type C: Dual Receive and Dual Transmit

Frequency Range:

- (RX) FM: 136-174MHz 400-480MHz,220-260MHz
- (TX) FM: 136-174MHz,400-480MHz

FM Radio:76-108MHz

Type D: Dual Receive and Dual Transmit

Frequency Range:

- (RX) FM:136-174MHz 400-480MHz,220-260MHz
- (TX) FM: 136-174MHz,400-480MHz
- (RX) AM:108-134MHz(Airband)

FM Radio: 76-108MHz

Function:

- Working mode:UU,UV,VV, VU,UV or UU as repeater mode(Type C,Type D).
- 200 Channels+2 groups VFO.
- Output Power:5W/0.5W
- 51 groups+1 group user defined CTCSS+1024 groups DCS encode and decode.
- DTMF+2Tone+5Tone encode and decode.
- Multi scan: VFO scan+channel scan+priority scan+CTCSS scan+DCS scan.
- VOX function(10 levels) Squelch Tail Elimination.
- Skip frequency be programmed (Type D only).
- SMS (Type D only).



AT-938UV

Dual Band, Dual Display and Dual Standby

Frequency Range:

- 136.00-174.00 MHz
- 400.00-480.00MHz

Features:

- Output : 5W/1W
- High &Low Power Switchable
- Battery Saving
- Dual Band Standby
- CTCSS/DCS Codes
- Emergency Alarm



AT-318UV

Dual Band, Dual Display and Dual Standby

Frequency Range:

- 136.00-174.00 MHz
- 400.00-480.00MHz

Features:

- Output : 5W/1W.
- High &Low Power Switchable.
- Battery Saving.
- Dual Band Standby.
- CTCSS/DCS Codes.

• Dual Band Handheld Radio



NEW

FC CE RoHS

AT-518UV

Dual Band, Dual Display and Dual Standby.

Frequency Range:
136.00-174.00 MHz
400.00-480.00MHz

Features:

- Output : 2.5W/1W.
- High &Low Power Switchable.
- Battery Saving.
- Dual Band Standby.
- CTCSS/DCS Codes.
- Battery: 3.7V, 2200mAH.



NEW

FC CE RoHS

AT-518UV II

Dual Band, Dual Display and Dual Standby.

Frequency Range:
136.00-174.00 MHz
400.00-480.00MHz

Features:

- Output : 5W/1W
- High &Low Power Switchable
- Battery Saving
- Dual Band Standby
- CTCSS/DCS Codes
- Battery: 7.4V, 1500mAH



NEW

FC CE RoHS

AT-3208UV

Dual Band, Dual Display and Dual Standby.

Frequency Range:
136.00-174.00 MHz
400.00-480.00MHz

Features:

- Output : 2.5W/1W
- High &Low Power Switchable
- Battery Saving
- Dual Band Standby
- CTCSS/DCS Codes
- Battery: 3.7V, 2200mAH



NEW

FC CE RoHS

AT-3208UV II

Dual Band, Dual Display and Dual Standby.

Frequency Range:
136.00-174.00 MHz
400.00-480.00MHz

Features:

- Output : 5W/1W
- High &Low Power Switchable
- Battery Saving
- Dual Band Standby
- CTCSS/DCS Codes
- Battery: 7.4V, 1500mAH

• Single Band Mobile Radio



AT-588 Mobile Radio



Frequency: 66~88MHz, 136~173.995MHz, 400~490MHz
(Normal), 440~512MHz,
27~43MHz/220~260MHz etc.
(ODM Project)

Function:

- Output Power : 60W(VHF),40W(UHF)/25W/10W.
- 200 programmable memorized channels,the channels can be marked with letter and digits.
- CTCSS/DCS/DTMF/2Tone/5Tone decode and encode.
- Four different tone-pluse frequencies.
- CTCSS/DCS scan.
- Componder to reduce noise.
- Theft alarm.
- ANI function (DTMF/ANI, 5-Tone/ANI)/PTT ID.
- QHM-03 multifunctional microphone with DTMF.
- Scramble function (option).

Accessories:

- Microphone (with DTMF keypad)
- Mobile installing bracket
- DC power cable with fuse holder
- Hardware kits for bracket
- QDM-01 Desktop Mic (Option)

Can work as HAM radio and professional radio mode after program.



AT-5189 Mobile Radio



Frequency: 66~88MHz/136~174MHz
400~490MHz etc.

Function:

- Output Power: 60W(VHF),40W(UHF)/25W/10W.
- 250 channels, every channel can be named with 32 characters.
- CTCSS/DCS/DTMF/2Tone,5Tone decode and encode.
- Componder to reduce noise.
- ANI function (display missed calls) /PTT ID.
- Single call, group call, selective call and emergency call are all available.

Accessories:

- Microphone.
- Mounting bracket.
- DC power cable with fuse holder.
- Hardware kits for bracket.
- QDM-01 Desktop MIC (Option).
- QHM04 DTMF MIC (Option).

Can work as HAM radio and professional radio mode after program.

• Single Band Mobile Radio



AT-888 FC CE RoHS

Function:

- 16 Channels.
- Power:60/40W.
- CTCSS/DCS.
- Favorable User experience.
- Easy operation.



AT-888 Plus FC CE RoHS

Function:

- 16 Channels.
- Microphone W/LCD and 3 keys.
- Power:60/40W.
- CTCSS/DCS.
- Favorable User experience.
- Easy operation.



AT-888 Super

Function:

- 16 Channels.
- Microphone W/LCD and 16 keys.
- Direct input freq by Microphone.
- Power:60/40W.
- CTCSS/DCS.
- Favorable User experience.
- Easy operation.

FC CE RoHS



AT-889UV
Dual Band Mobile Radio

Function:

- 16 Channels.
- Microphone W/LCD or W/O LCD.
- Power:35/45W.
- CTCSS/DCS.
- Favorable User experience.
- Easy operation.

FC CE RoHS

• Single Band Mobile Radio



AT-999 **High Power Mobile Radio**

Frequency: 136~174MHz
66~88MHz, 400~490MHz etc.

Function:

- Output Power: 80W(VHF), 60W(UHF).
- 200 channels.
- CTCSS/DCS/DTMF/2Tone,5Tone decode and encode.
- Multi-Scramble.
- Comander to reduce noise.
- ANI function (display missed calls) /PTT ID.
- Single call, group call, selective call and emergency call are all available.

Accessories:

- Microphone.
- Mounting bracket.
- DC power cable with fuse holder.
- Hardware kits for bracket.
- QDM-01 Desktop MIC (Option).
- QHM04 DTMF MIC (Option).

Can work as HAM radio and professional radio mode after program.



AT-899 **Mobile Radio**

Frequency: 136~174MHz
66~88MHz, 400~490MHz etc.

Function:

- Output Power: 60W(VHF), 40W(UHF)
- 200 channels.
- CTCSS/DCS decode and encode.

Accessories:

- Microphone.
- Mounting bracket.
- DC power cable with fuse holder.
- Hardware kits for bracket.
- QDM-01 Desktop MIC (Option).
- QHM04 DTMF MIC (Option).

Can work as HAM radio and professional radio mode after program.



AT-805 **DSC Marine Radio**

Frequency: RX: 156~163.425MHz
TX: 156~161.450MHz

Function:

- Power: 25W.
- Channel Spacing: 25KHz.
- Dual Watch/Tri-Watch.
- Easy operation with large keys.
- Waterproof construction.
- Channel selector.
- MMSI code operation.
- Squelch.
- GPS.
- Voice scrambler(option).

• 10 METER Radio/Citizen Band Radio



AT-5555 10 METER Radio

Frequency: 25.615~30.105MHz

Function:

- Mode: AM, FM, USB, LSB, PA, CW.
- ASQ function.
- Large LCD display.
- ECHO function.
- Frequency programmable on computer.
- Dual Watch.
- EMG channel CH9/19.



AT-6666 High Power 10 METER Radio

Frequency: 25.615~30.105MHz

Function:

- Mode: AM, FM, USB, LSB, PA.
- AM PEP Max: 60W
- FM Max: 45W
- SSB Max: 60W
- ASQ function.
- Large LCD display.
- ECHO function.
- Frequency programmable on computer.
- VFO channel.
- CTCSS/DCS (option).



AT-5555N Large LCD display

Frequency: 25.615~30.105MHz

Function:

- Mode: AM, FM, USB, LSB, PA, CW.
- PEP: AM 45W ; FM 30W; SSB 30W.
- ASQ function.
- Large LCD display.
- ECHO function.
- Frequency programmable on computer.
- Dual Watch.
- EMG channel CH9/19.



APOLLO I CB Radio

Frequency: 25.615~30.105MHz

Function:

- Mode:EU,EUH,CE,UK,PL,E1,I2,DE,DEH.
- Microphone with LCD.
- 3-colors backlight.
- AM/FM mode.
- ASQ/SQ function.
- EMG channel CH9/19.
- Dual Watch.



APOLLO II CB Radio

Frequency: 25.615~30.105MHz

Function:

- Mode:EU,EUH,CE,UK,PL,E1,I2,DE,DEH.
- Microphone with LCD.
- 3-colors backlight.
- AM/FM mode.
- ASQ/SQ function.
- EMG channel CH9/19.
- Dual Watch.



AT-5289 High Power CB Radio

Frequency: 25.615~30.105MHz

Function:

- AM PEP Max:60W FM Max:50W.
- ASQ function.
- Scan function.
- Emergency call.
- CTCSS/DCS code.
- Beep function.
- Key lock function.
- TOT function.
- Memory channel.
- NB/ANL.
- Roger beep and Echo.
- Key programming.
- PC programming.
- VFO mode (Input frequency).
- Busy channel lock.

UHF CB Radio 476.425~477.400MHz 40 Channels Handheld & Vehicle radio are available (ODM Project)

• Citizen Band Radio



AT-300M
CB Radio



Frequency: ODM project

Function:

- Channels: E D EU EC PL UK US NZ.
- Emergency call channel available (CH9).
- SQ function.
- ASQ function.

Item1: AM/FM Mode (1 color backlight)

Item2: AM mode only (7 colors backlight)

Item3: FM mode only (7 colors backlight)



AT-310M
CB Radio



Frequency: ODM project

Function:

- Channels: E D EU EC PL UK US NZ.
- Expand Mode Freq: RU PO PC
- Emergency call channel available (CH9).
- SQ function.
- ASQ function.



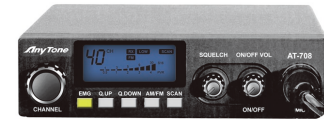
AT-608M
CB Radio



Frequency: ODM project

Function:

- Frequency and channel are programmed by user.
- AM/FM mode.
- Scan function.
- SQ&ASQ function.
- Emergency call channel available (CH19,CH9).
- Dual watch function.
- Key lock function.
- CTCSS/DCS for FM mode.
- DTMF.
- PC Programmable.
- Comander.
- 7 colors backlight.



AT-708
CB Radio



Frequency: ODM project

Function:

- Channels: A, B, C, D, E, F, G, H, I, L.
- Emergency call channel available(CH9).
- AM/FM mode.
- Scan function.
- ASQ function.
- EU/RU mode.



AT-5288
CB Radio



Frequency: ODM project

Function:

- Channels: E D EU EC PL UK US NZ.
- 40 channels.
- AM/FM Mode.
- EU/RU Mode.
- SQ&ASQ function.
- Emergency call channel available.(CH19, CH9).



AT-108
CB Radio



Frequency: ODM project

Function:

- Channels: E D EU EC PL UK US NZ.
- Emergency call channel available(CH19, CH9).
- Key lock function.
- AM/FM Mode
- EU/RU Mode
- SQ&ASQ function.

• Citizen Band Radio



NEW

AT-118 Handheld CB Radio (FM)

Frequency: 25.0000~30.9875MHz
30.0000~35.9875MHz
35.0000~42.9875MHz
39.0000~46.9875MHz

Functions:

- 16 channels.
- 5W power output.
- CTCSS/DCS encode/decode.
- PC programmable.

Accessories:

- One charger.
- One Li-ion battery (1200mAh).
- Ni-MH battery (option).
- One rubber antenna.
- One user's manual.



NEW

AT-27 CB Radio

Frequency: 25.615~30.105MHz

Function:

- Mode:EU,EUH,CE,UK,PL,E1,I2,DE,DEH.
- Microphone with LCD.
- 3-colors backlight.
- AM/FM mode.
- ASQ/SQ function.
- EMG channel CH9/19.
- Dual Watch.



NEW

AT-600M CB Radio

Frequency: 25.615~30.105MHz

Function:

- large LCD display.
- ASQ function.
- Scan function.
- AM/FM mode.
- CH9 emergency key.
- M1~ M3 memory.
- BP/ RB function.



NEW

AT-430 43MHz Radio

Frequency: 25.615~30.105MHz

Function:

- large LCD display.
- ASQ function.
- Scan function.
- AM/FM mode.
- CH9 emergency key.
- M1~ M3 memory.
- BP/ RB function.



NEW

MINI CB

Frequency: 25.615~30.105MHz

Function:

- Mode:EU,EUH,CE,UK,PL,E1,I2,DE,DEH.
- Microphone with LCD.
- 3-colors backlight.
- AM/FM mode.
- ASQ/SQ function.
- EMG channel CH9/19.
- Dual Watch.

• Particular Handheld Radio



NEW

Bluetooth Radio

7W
2600mAh Battery



AT-898

Frequency: 136~174MHz, 350~390MHz, 400~480MHz, 440~512MHz

Function:

- Output power 7W, 16X8=128 channels.
- Water protection class IP54, Voice annunciation (Chinese or English or Russian).
- CTCSS/DCS/DTMF encode and decode.
- Multi-Scanmode:VFOscan+ channel scan+priority scan +CTCSS scan +DCS scan.
- VOX function (3 levels), voice scramble & compander, wide/narrow band.
- Battery power checkup.
- Squelch Tail Elimination function.
- Bluetooth+bluetooth earpiece (option).

Accessories:

- One charger.
- One Li-ion battery(2600mAh).
- One rubber antenna.
- One user's manual.



NEW

IP67 Waterproof Radio



AT-3319G

Frequency: 66~88MHz,136~174MHz, 350~390MHz, 400~470MHz, 440~512MHz

Functions:

- Output power 4/5W. 0.5W for PMR RADIO
- Receive FM Radio.
- 128 Signal-duplex channels, three-color LCD backlight display.
- CTCSS+DCS encode and decode+DTMF encode/decode.
- Multi-Scan mode: VFO scan+ channel scan+priority scan+CTCSS scan+DCS scan.
- VOX function (3 levels), voice scramble & compander.
- DTMF ANI function.
- Squelch Tail Elimination function.
- Emergency lighting function.

Accessories:

- One charger
- One Li-ion battery(1500mAh)
- One Li-ion battery 1800mAh (option)
- One rubber antenna
- One user's manual



IP67 Waterproof Radio



AT-289P

Frequency: 66~88MHz,136~174MHz, 350~390MHz, 400~480MHz, 440~512MHz

Function:

- Output power 4/5W, 16X8=128 channels.
- Water protection class IP67, Voice annunciation (Chinese or English).
- CTCSS+DCS+DTMF encode and decode.
- Multi-Scan mode: VFO scan+channel scan+priority scan+CTCSS scan+DCS scan.
- VOX function (6 levels), voice scramble & compander, wide/narrow band.
- Squelch Tail Elimination function.
- Battery power check up.

Accessories:

- One charger.
- One Li-ion battery(1500mAh).
- One Li-ion battery 1800mAh (option)
- One rubber antenna.
- One user's manual.

• Particular Handheld Radio



NEW

Any language
Be programmed
to announce.



AT-298R

Voice Recording and Announcing Radio

Frequency: 136~174MHz,
400~480MHz etc.

Functions:

- 128 channels, 7W high power .
- VOX function.
- Emergency alarm.
- Battery power check up.
- CTCSS/DCS/DTMF encode and decode.
- Vibration (option)
- Voice Recording and Announcing
- Any language Be programmed to announce.

Accessories:

- One charger
- One Li-ion battery (2200mAh)
- One rubber antenna
- One user's manual



NEW

Any language
Be programmed
to announce.



AT-518R

Voice Recording and Announcing Radio

Frequency: 136~174MHz,
400~480MHz etc.

Functions:

- 128 channels, 5W high power .
- VOX function.
- Emergency alarm.
- Battery power check up.
- CTCSS/DCS/DTMF encode and decode.
- Vibration (option)
- Voice Recording and Announcing
- Any language Be programmed to announce.

Accessories:

- One charger
- One Li-ion battery (1500mAh)
- One rubber antenna
- One user's manual



NEW

Any language
Be programmed
to announce.



AT-3208R

Voice Recording and Announcing Radio

Frequency: 136~174MHz,
400~480MHz etc.

Functions:

- 128 channels, 5W high power .
- VOX function.
- Emergency alarm.
- Battery power check up.
- CTCSS/DCS/DTMF encode and decode.
- Vibration (option)
- Voice Recording and Announcing
- Any language Be programmed to announce.

Accessories:

- One charger
- One Li-ion battery (1500mAh)
- One rubber antenna
- One user's manual

• Particular Handheld Radio



NEW

MINI Radio

Functions:

- Power:0.5W/1.5W
- 16 channels .
- CTCSS/DCS encode and decode.
- 800 mAh Battery.

NEW

Smart Radio

Functions:

- Power:0.5W/1.5W
- 16 channels.
- LCD display.
- CTCSS/DCS encode and decode.
- 800 mAh Battery.



NEW

AT-98

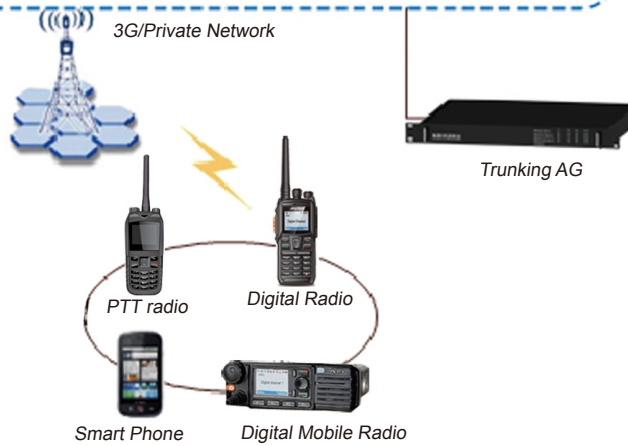
Functions:

- CDMA2001X+DPMR .
- CDMA2001X+Analogue.



• Particular Handheld Radio

MSC Multi-service Management System



- a. IP private networking repeater system (DPMR Handheld Radio+ Private networking system).
- b. IP private networking repeater system (Smartphone+ Private networking system).
- c. IP private+public networking repeater system (Smartphone+ DPMR handheld Radio, Private+Public networking system).

• Commercial Handheld Radio



AT-289Plus

Frequency: 66~88MHz,136~174MHz, 350~390MHz, 400~480MHz,440~512MHz.

Functions:

- Output power 4/5W, 16X8=128 channels.
- Water protection class IP55, Voice ann-unciation (Chinese or English or Russian). CTCSS+DCS+DTMF encode and decode.
- Multi-Scan mode: VFO scan+channel scan+priority scan+CTCSS scan+DCS scan. VOX function (6 levels), voice scramble & compander, wide/narrow band. Squelch Tail Elimination function.
- Battery power check up.
- Highlight Torch

Accessories:

- One charger
- One Li-ion battery(1600mAh)
- One rubber antenna
- One user's manual



AT-289

Frequency: 66~88MHz,136~174MHz, 350~390MHz,400~480MHz, 440~512MHz.

Functions:

- Output power 4/5W, 16X8=128 channels.
- Water protection class IP55, Voice announcement (Chinese or English or Russian). CTCSS+DCS+DTMF encode and decode.
- Multi-Scan mode: VFO scan+channel scan+priority scan+CTCSS scan+DCS scan. VOX function (6 levels), voice scramble & compander, wide/narrow band. Squelch Tail Elimination function.
- Battery power check up. Blue tooth(option).

Accessories:

- One charger
- One Li-ion battery(1500mAh)
- One Li-ion battery 1800mAh (option)
- One rubber antenna
- One user's manual



AT-289G

Frequency: 66-88MHz,136~174MHz, 350~390MHz, 400~480MHz, 440~512MHz

Functions:

- Output power 4/5W, 16X8=128 channels.
- Water protection class IP55, Voice announcement (Chinese or English or Russian).
- CTCSS+DCS+DTMF encode and decode.
- Multi-Scan mode:VFO scan+channel scan+priority scan+CTCSS scan+DCS scan.
- VOX function (6 levels), voice scramble & compander, wide/narrow band.
- Squelch Tail Elimination function.
- Battery power check up.
- Blue tooth(option).

Accessories:

- One charger.
- One Li-ion battery (1500mAh).
- One Li-ion battery 1800mAh (option).
- One rubber antenna.
- One user's manual.



AT-298

Frequency: 136~174MHz, 400~480MHz etc.

Functions:

- 128 channels, 7W output power .
- Voice prompting function,VOX function.
- Emergency alarm.
- Battery power check up.
- CTCSS/DCS encode and decode.
- Vibration (option).

Accessories:

- One charger
- One Li-ion battery (2200mAh)
- One rubber antenna
- One user's manual

• Commercial Handheld Radio

NEW



FC CE RoHS

AT-318P

Frequency: 136~174MHz,
400~520MHz etc.

Functions:

- 16 channels, 4W/5W output power .
- VOX function.
- Voice announcement
- Squelch Tail Elimination function.
- Battery power check up.
- CTCSS/DCS encode and decode.
- Highlight Torch

Accessories:

- One charger
- One Li-ion battery (1500mAh)
- One rubber antenna
- One user's manual



FC CE RoHS

AT-929G

Frequency: 136~174MHz,
400~520MHz etc.

Functions:

- 16 channels, 4W/5W output power .
- Voice prompting function, VOX function.
- Emergency alarm & night lighting function.
- Missed Calls (Musical Chord)
- Battery power check up.
- CTCSS/DCS encode and decode.
- Vibration (option)

Accessories:

- One charger
- One Li-ion battery (1200mAh)
- 1700mAh Li-ion battery (Option)
- One rubber antenna
- One user's manual



FC CE RoHS

AT-3308

Frequency: 136~174MHz, 350~390MHz,
400~470MHz, 440~512MHz etc.
66~88MHz (ODM, CE approval)

Functions:

- 4/5W power output.
- In-built DCS/CTCSS encoder/decoder.
- Voice prompting function, VOX function.
- Prior scanning.
- PC programmable.

Accessories:

- One charger
- One Li-ion battery (1600mAh)
- One rubber antenna
- One user's manual

• Commercial Handheld Radio



AT-628

Frequency: 400~480MHz

Functions:

- 128 channels, 2W output power.
- Voice prompting function, VOX function.
- CTCSS/DCS encode and decode.
- Battery power check up.
- Emergency alarm & night lighting function.

Accessories:

- One charger
- One Li-ion battery (1500mAh)
- One rubber antenna
- One user's manual

TYPE 2:

FRS/PMR/LPD/GMRS Frequency



AT-628G

Frequency: 400~480MHz

Functions:

- 128 channels, 2W output power.
- Voice prompting function, VOX function.
- CTCSS/DCS encode and decode.
- Battery power check up.
- Emergency alarm & night lighting function.

Accessories:

- One charger
- One Li-ion battery (1500mAh)
- One rubber antenna
- One user's manual

TYPE 2:

FRS/PMR/LPD/GMRS Frequency



NEW

**7W
2600mAh Battery**

FC CE RoHS

AT-889

Frequency: 136~174MHz, 350~390MHz,
400~480MHz, 440~512MHz

Functions:

- Output power 7W, 16X8=128 channels.
- Water protection class IP54, Voice announcement (Chinese or English or Russian).
- CTCSS+DCS+DTMF encode and decode.
- Multi-Scan mode: VFO scan+channel scan+priority scan+CTCSS scan+DCS scan.
- VOX function (3 levels), voice scramble & compander, wide/narrow band.
- Squelch Tail Elimination function.
- Battery power check up.

Accessories:

- One charger
- One Li-ion battery (2600mAh)
- One rubber antenna
- One user's manual

• Commercial Handheld Radio



NEW

FC CE RoHS

AT-518

Frequency: 136~174MHz,
400~480MHz etc.

Functions:

- 16 channels, 2.5W output power .
- Voice prompting function,VOX function.
- Emergency alarm.
- Priority Scan
- Battery power check up.
- CTCSS/DCS encode and decode.

Accessories:

- One charger
- One Li-ion battery (3.7V, 2200mAh)
- One rubber antenna
- One user's manual



NEW

FC CE RoHS

AT-518G

Frequency: 136~174MHz,
400~480MHz etc.

Functions:

- 16 channels, 2.5W output power .
- Voice prompting function,VOX function.
- Emergency alarm.
- Priority Scan
- Battery power check up.
- CTCSS/DCS encode and decode.

Accessories:

- One charger
- One Li-ion battery (3.7V, 2200mAh)
- One rubber antenna
- One user's manual



NEW

FC CE RoHS

AT-3208

Frequency: 136~174MHz,
400~480MHz etc.

Functions:

- 16 channels, 2.5W output power .
- Voice prompting function,VOX function.
- Emergency alarm.
- Priority Scan
- Battery power check up.
- CTCSS/DCS encode and decode.

Accessories:

- One charger
- One Li-ion battery (3.7V, 2200mAh)
- One rubber antenna
- One user's manual



• Commercial Handheld Radio



NEW

FC CE RoHS

AT-518Plus

Frequency: 136~174MHz,
400~480MHz etc.

Functions:

- 16 channels, 5W output power .
- Voice prompting function,VOX function.
- Emergency alarm.
- Priority Scan
- Battery power check up.
- CTCSS/DCS encode and decode.

Accessories:

- One charger
- One Li-ion battery, (7.4V, 1500mAh)
- One rubber antenna
- One user's manual



NEW

FC CE RoHS

AT-3208Plus

Frequency: 136~174MHz,
400~480MHz etc.

Functions:

- 16 channels, 5W output power .
- Voice prompting function,VOX function.
- Emergency alarm.
- Priority Scan
- Battery power check up.
- CTCSS/DCS encode and decode.

Accessories:

- One charger
- One Li-ion battery, (7.4V, 1500mAh)
- One rubber antenna
- One user's manual



NEW

ST-218/318

Frequency:
136~174MHz,
400~480MHz, etc.

Functions:

- 16 channels.
- 4/5W power output
- DCS/CTCSS function.
- PC programmable.

Accessories:

- One charger
- 1200mAh, 7.4V
- Ni-cd battery
- One rubber antenna
- One user's manual

• Amateur Handheld Radio



AT-288Plus

Frequency: 66~88MHz, 136~174MHz, 245~245.9875MHz, 350~390MHz, 400~470MHz, 440~512MHz

Functions:

- Output power 4/5W.
- Receive FM Radio.
- 128 Signal-duplex channels, three-color LCD backlight display.
- Voice annunciation (Chinese or English).
- CTCSS+DCS encode and decode+DTMF encode/decode.
- Multi-Scan mode: VFO scan+channel scan+priority scan+CTCSS scan+DCS scan.
- VOX function (3 levels), voice scramble & compander, wide/narrow band.
- DTMF ANI function.
- Squelch Tail Elimination function.
- Emergency lighting function.

Accessories:

- One charger
- One Li-ion battery(1600mAh)
- One rubber antenna
- One user's manual



AT-288

Frequency: 66~88MHz, 136~174MHz, 245~245.9875MHz, 350~390MHz, 400~470MHz, 440~512MHz

Functions:

- Output power 4/5W.
- Receive FM Radio.
- 128 Signal-duplex channels, three-color LCD backlight display.
- Voice annunciation (Chinese or English).
- CTCSS+DCS encode and decode+DTMF encode/decode.
- Multi-Scan mode: VFO scan+channel scan+priority scan+CTCSS scan+DCS scan.
- VOX function (3 levels), voice scramble & compander, wide/narrow band.
- DTMF ANI function.
- Squelch Tail Elimination function.
- Emergency lighting function.
- Blue tooth(option).

Accessories:

- One charger
- One Li-ion battery(1500mAh)
- One Li-ion battery 1800mAh (option)
- One rubber antenna
- One user's manual



AT-288G

Frequency: 66~88MHz, 136~174MHz, 245~245.9875MHz, 350~390MHz, 400~470MHz, 470~512MHz

Functions:

- Output power 4/5W.
- Receive FM Radio.
- 128 Signal-duplex channels, three-color LCD backlight display.
- Voice annunciation (Chinese or English).
- CTCSS+DCS encode and decode+DTMF encode/decode.
- Multi-Scan mode: VFO scan+ channel scan+priority scan+CTCSS scan+DCS scan.
- VOX function (3 levels), voice scramble & compander, wide/narrow band.
- DTMF ANI function.
- Squelch Tail Elimination function.
- Emergency lighting function.
- Blue tooth(option).

Accessories:

- One charger
- One Li-ion battery(1500mAh)
- One Li-ion battery 1800mAh (option)
- One rubber antenna
- One user's manual



AT-318G

Frequency: 136~174MHz, 245~245.9875MHz, 400~480MHz etc.

Functions:

- 128 channels, 4W/5W output power .
- Voice prompting function, VOX function.
- Emergency alarm & night lighting function.
- Battery power check up.
- CTCSS/DCS encode and decode.
- FM radio

Accessories:

- One charger
- One Li-ion battery (1500mAh)
- One rubber antenna
- One user's manual

• Amateur Handheld Radio



NEW

FC CE RoHS

AT-938G

Frequency: 136~174MHz,
245~245.9875MHz,
400~480MHz etc.

Functions:

- 128 channels, 4W/5W output power .
- Voice prompting function, VOX function.
- Emergency alarm & night lighting function.
- Battery power check up.
- CTCSS/DCS encode and decode.
- FM radio

Accessories:

- One charger
- One Li-ion battery (1200mAh)
- 1700mAh Li-ion battery (Option)
- One rubber antenna
- One user's manual



NEW

FC CE RoHS

AT-929

Frequency: 136~174MHz,
245~245.9875MHz,
400~480MHz etc.

Functions:

- 128 channels, 4W/5W output power .
- Voice prompting function,VOX function.
- Emergency alarm & night lighting function.
- Missed Calls (Musical Chord).
- Battery power check up.
- CTCSS/DCS encode and decode.
- FM radio.
- Vibration (option).

Accessories:

- One charger.
- One Li-ion battery (1200mAh).
- 1700mAh Li-ion battery (Option).
- One rubber antenna.
- One user's manual.



NEW

AT-3218

TYPE 1:

Frequency: 136~174MHz
245.0000~245.9875MHz
400~480MHz etc.

Functions:

- 128 single-duplex channels, 2W output power, in-built DCS/CTCSS functions, voice prompting function, Copy function with wire.
- FM radio(option).

Accessories:

- One charger
- One Li-ion battery (1500mAh)
- One rubber antenna
- One user's manual

TYPE 2:

PMR Radio + LPD Radio



AT-3218G

Frequency: 136~147MHz,
245~245.9875MHz,
400~480MHz etc.

Functions:

- 128 channels, 2W output power .
- Voice prompt function.
- CTCSS/DCS encode and decode.
- Battery power check up.
- FM radio.

Accessories:

- One charger
- One Li-ion battery (1500mAh)
- One rubber antenna
- One user's manual

TYPE 2:

FRS/PMR/LPD/GMRS Frequency

• Repeater & Duplexer



NEW

7W



AT-188

Frequency: 136~174MHz,
245~245.9875MHz,
350~390MHz, 400~470MHz,
440~512MHz

Functions:

- Output power 6W.
- Receive FM Radio.
- 128 Signal-duplex channels, three-color LCD backlight display.
- Voice annunciation (Chinese or English).
- CTCSS+DCS encode and decode+DTMF encode/decode .
- Multi-Scan mode: VFO scan+ channel scan+priority scan+CTCSS scan+DCS scan.
- Voice scramble & compander, wide/narrow band.
- DTMF ANI function.
- Squelch Tail Elimination function.

Accessories:

- One charger
- One Li-ion battery (2600mAh)
- One rubber antenna
- One user's manual



NEW

AT-7188 Repeater

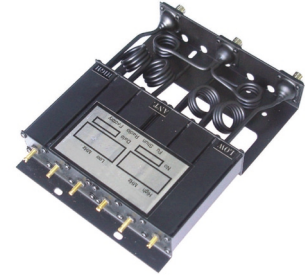
Frequency: 134~174MHz/350~390MHz/
400~480MHz

Functions:

- Duplex working mode.
- With input/output ports to connect with all kinds of operating terminals.
- Output Power: 35W.
- Dimension: 480x395x120mm(LxHxW).

Accessories:

- Two sets of AT-588
- Duplexer
- Power supply
- Mainframe-box
- High gain antenna with cables (option)



NEW

Duplexer

Frequency range:

within 136~174,220~260,
400~480MHz etc.
according to customer's need.

Frequency Separation:

5.7MHz/7MHz/10MHz etc.(Normal)

Maximum Insertion Loss:

Transmitter antenna:1.5dB
Receiver antenna:1.5dB

Minimum isolation:

Transmitter antenna:>65dB
Receiver antenna:>65dB

Maximum VSWR:1.5:1
Max input power:50 watt
Impedance:50 ohm
Resonator:Helical
Number of cavities:6
Connector sockets:
Type N-K or Type BNC

R & D

Innovation and Improvement is what we pursue, 30 R & D staff with 18 years experience to ensure our perfect performance in the field of electronic communication equipments. Our R&D team keeps high concern on advanced facility, precise attitude, intensive sense of quality and excellent managing system to meet demand of our clients from different areas. Innovation is never-ending topic in Qixiang Electron Science & Technology Co.,Ltd.

30 R&D for your ODM project even when there is no such a product in the market.



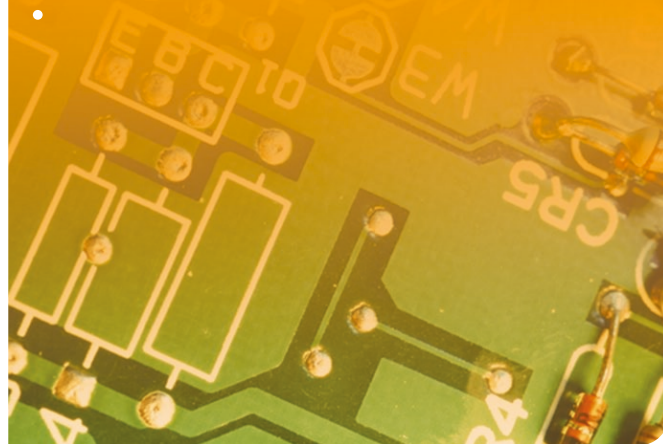
RoHS Test Instrument
SPECTRO XEPOS

Cellphone Repeater Series

MODULE SERIES

RF, Fiber, 2.4G etc.

ODM PROJECT SUPPORT



MINI REPEATER WIDE BAND

Mini repeater can be applied to solving the problems of indoor coverage in signal blank areas such as car parking lot, office etc., Divided as wideband and selective band with multifarious output power to suit for different coverages (100, 200, 300, 600, 800, 1200m² etc.).

• GSM 900 CELL-PHONE REPEATER

Mobile can select the strong signal band to dial out and dial in within GSM900/DCS1800/PCS1900 Tri-band, GSM900 is the most popular and have largest market potential in the world, so we subtly design the following GSM cellphone repeater series to meet different coverage as per customer's need. With it, you can easily communicate with others at signal blank areas.



**AT-400 Turbo
GSM Cellphone
Repeater**



Frequency: up link 890-915MHz,
down link 935-960MHz

Functions:

- Adopt duplex design.
- **80m² indoor coverage.**
- Practical, beautiful and easy to install.
- With night time LED lighting.

Accessories:

- One booster.
- One outdoor antenna.
- One indoor omnidirectional antenna.
- One power supply.



**AT-600 Turbo
GSM Cellphone
Repeater**



Frequency: up link 890-915MHz,
down link 935-960MHz

Functions:

- Adopt duplex design.
- **300m² indoor coverage.**
- Practical, Fashionable and easy to install.
- ATT&ALC auto-adjustment for electronic level.
- With field intensity indicator.
- With night time LED lighting.

Accessories:

- One booster.
- One outdoor antenna.
- One indoor omnidirectional antenna.
- 5-meter standard cable.
- One power supply.



**AT-800 Turbo
GSM Cellphone
Repeater**



Frequency: up link 890-915MHz,
down link 935-960MHz

Functions:

- Adopt duplex design.
- **1200m² indoor coverage.**
- Practical, Fashionable and easy to install.
- ATT&ALC auto-adjustment for electronic level.
- With field intensity indicator.

Accessories:

- One booster.
- One outdoor antenna.
- One indoor omnidirectional antenna.
- 5-meter standard cable.

• GSM 900 CELL-PHONE REPEATER



AT-400 
GSM Cellphone Repeater

Frequency: up link 890-915MHz,
down link 935-960MHz

Functions:

- Adopt duplex design.
- **80m² indoor coverage.**
- Practical, beautiful and easy to install.

Accessories:

- One booster
- One outdoor antenna
- One indoor omnidirectional antenna
- One power supply



AT-408 
GSM Carrier Cellphone Repeater

Frequency: up link 890-915MHz,
down link 935-960MHz

Functions:

- Adopt duplex design, Communication in car more easy, Practical, beautiful and easy to install.
- Both 12V and 24V can be in commission.

Accessories:

- One booster
- One car antenna
- One omnidirectional antenna



AT-500 
GSM Cellphone Repeater

Frequency: up link 890-915MHz,
down link 935-960MHz

Functions:

- Adopt duplex design.
- **150m² indoor coverage.**
- Practical, beautiful and easy to install
- ATT&ALC auto-adjustment for electronic level.

Accessories:

- One booster
- One outdoor antenna
- One indoor omnidirectional antenna
- 5-meter standard cable
- One power supply



AT-600 
GSM Cellphone Repeater

Frequency: up link 890-915MHz,
down link 935-960MHz

Functions:

- Adopt duplex design.
- **300m² indoor coverage.**
- Practical, beautiful and easy to install.
- ATT&ALC auto-adjustment for electronic level.

Accessories:

- One booster
- One outdoor antenna
- One indoor omnidirectional antenna
- 5-meter standard cable
- One power supply

• GSM 900 CELL-PHONE REPEATER



AT-608 GSM Cellphone Repeater



Frequency: up link 890-915MHz,
down link 935-960MHz

Functions:

- Adopt duplex design
- **600m² indoor coverage.**
- Practical, beautiful and easy to install.
- ATT&ALC auto-adjustment for electronic level.

Accessories:

- One booster
- One outdoor antenna
- One indoor omnidirectional antenna
- 5-meter standard cable



AT-700 GSM Cellphone Repeater



Frequency: up link 890-915MHz,
down link 935-960MHz

Functions:

- Adopt duplex design
- **800m² indoor coverage.**
- Practical, beautiful and easy to install.
- ATT&ALC auto-adjustment for electronic level.

Accessories:

- One booster
- One outdoor antenna
- One indoor omnidirectional antenna
- 5-meter standard cable



AT-800 GSM Cellphone Repeater



Frequency: up link 890-915MHz,
down link 935-960MHz

Functions:

- Adopt duplex design.
- **1200m² indoor coverage.**
- Practical, beautiful and easy to install.
- ATT&ALC auto-adjustment for electronic level.

Accessories:

- One booster
- One outdoor antenna
- One indoor omnidirectional antenna
- 5-meter standard cable



AT-600ES EGSM Cellphone Repeater



Frequency: up link 880-915MHz,
down link 925-960MHz

Functions:

- Adopt duplex design.
- **300m² indoor coverage.**
- Practical, beautiful and easy to install.
- ATT&ALC auto-adjustment for electronic level.

Accessories:

- One booster
- One outdoor antenna
- One indoor omnidirectional antenna
- 5-meter standard cable



• CDMA 800 WIDE BAND REPEATER



AT-400C
CDMA 800 Repeater

Frequency: up link 824-849MHz,
down link 869-894MHz

Functions:

- Adopt duplex design.
- **80m² indoor coverage.**
- Practical, beautiful and easy to install.

Accessories:

- One booster
- One outdoor antenna
- One indoor omnidirectional antenna
- One power supply



AT-408C
CDMA 800 Carrier
Repeater

Frequency: up link 824-849MHz,
down link 869-894MHz

Functions:

- Adopt duplex design, Communication in car more easy, Practical, beautiful and easy to install.
- Both 12V and 24V can be in commission.

Accessories:

- One booster
- One car antenna
- One omnidirectional antenna



AT-600C
CDMA 800 Repeater

Frequency: up link 824-849MHz,
down link 869-894MHz

Functions:

- Adopt duplex design.
- **300m² indoor coverage.**
- Practical, beautiful and easy to install.
- ATT&ALC auto-adjustment for electronic level.

Accessories:

- One booster
- One outdoor antenna
- One indoor omnidirectional antenna
- 5-meter standard cable
- One power supply



AT-600ES 27dBm
CDMA 800 Repeater

Frequency:
up link 824-849MHz,
down link 869-894MHz

Functions:

- Adopt duplex design.
- **600m² indoor coverage.**
- Practical, beautiful and easy to install.
- ATT&ALC auto-adjustment for electronic level.

Accessories:

- One booster
- One outdoor antenna
- One indoor omnidirectional antenna
- 5-meter standard cable

• WCDMA (3G) WIDE BAND REPEATER

Now 3G is developing very swiftly, we develop 3G/UMTS/WCDMA mini repeater series to help 3G mobile easy to dial.

- Compact-sized, practical, beautiful and easy to install
- Good quality components, AGC, ALC control circuit ensures high stability.
- Convenient maintenance.



**AT-4000W 10dBm
WCDMA (3G) Repeater**

Frequency:
up link 1920-1980MHz,
down link 2110-2170MHz

- Functions:**
- Adopt duplex design
 - **100m² indoor coverage.**
 - Practical, beautiful and easy to install.
 - ATT&ALC auto-adjustment for electronic level.

- Accessories:**
- One booster
 - One outdoor antenna
 - One indoor omnidirectional antenna
 - 5-meter standard cable



**AT-4800W 10dBm
WCDMA Carrier (3G)
Repeater**

Frequency: up link 1920-1980MHz,
down link 2110-2170MHz

- Functions:**
- Adopt duplex design, Communication in car more easy, Practical, beautiful and easy to install
 - Both 12V and 24V can be in commission

- Accessories:**
- One booster
 - One car antenna
 - One omnidirectional antenna



**AT-6000W 15dBm
WCDMA (3G) Repeater**

Frequency:
up link 1920-1980MHz,
down link 2110-2170MHz

- Functions:**
- Adopt duplex design
 - **300m² indoor coverage practical**
 - Practical, beautiful and easy to install,
 - ATT&ALC auto-adjustment for electronic level

- Accessories:**
- One booster
 - One outdoor antenna
 - One indoor omnidirectional antenna
 - 5-meter standard cable



**AT-6100W 23dBm
WCDMA (3G) Repeater**

Frequency:
up link 1920-1980MHz,
down link 2110-2170MHz

- Functions:**
- Adopt duplex design
 - **500m² indoor coverage practical**
 - Practical, beautiful and easy to install,
 - ATT&ALC auto-adjustment for electronic level

- Accessories:**
- One booster
 - One outdoor antenna
 - One indoor omnidirectional antenna
 - 5-meter standard cable



**AT-6200W 27dBm
WCDMA (3G) Repeater**

Frequency:
up link 1920-1980MHz,
down link 2110-2170MHz

- Functions:**
- Adopt duplex design
 - **800m² indoor coverage practical**
 - Practical, beautiful and easy to install,
 - ATT&ALC auto-adjustment for electronic level

- Accessories:**
- One booster
 - One outdoor antenna
 - One indoor omnidirectional antenna
 - 5-meter standard cable

• DCS WIDE BAND REPEATER



**AT-4000D 10dBm
DCS 1800 Repeater**

Frequency:
up link 1710-1785MHz,
down link 1805-1880MHz

Functions:

- Adopt duplex design.
- **100m² indoor coverage.**
- Practical, beautiful and easy to install.
- ATT&ALC auto-adjustment for electronic level

Accessories:

- One booster
- One outdoor antenna
- One indoor omnidirectional antenna
- 5-meter standard cable



**AT-4800D 10dBm
DCS 1800 Carrier
Repeater**

Frequency: up link 1710-1785MHz,
down link 1805-1880MHz

Functions:

- Adopt duplex design, Communication in car more easy, Practical, beautiful and easy to install.
- Both 12V and 24V can be in commission.

Accessories:

- One booster
- One car antenna
- One omnidirectional antenna



**AT-6000D 23dBm
DCS 1800 Repeater**

Frequency:
up link 1710-1785MHz,
down link 1805-1880MHz

Functions:

- Adopt duplex design.
- **500m² indoor coverage.**
- Practical, beautiful and easy to install
- ATT&ALC auto-adjustment for electronic level.

Accessories:

- One booster
- One outdoor antenna
- One indoor omnidirectional antenna
- 5-meter standard cable



**AT-6200D 27dBm
DCS 1800 Repeater**

Frequency:
up link 1710-1785MHz,
down link 1805-1880MHz

Functions:

- Adopt duplex design.
- **800m² indoor coverage.**
- Practical, beautiful and easy to install.
- ATT&ALC auto-adjustment for electronic level.

Accessories:

- One booster
- One outdoor antenna
- One indoor omnidirectional antenna
- 5-meter standard cable

• PCS WIDE BAND REPEATER



**AT-4000P 10dBm
PCS 1900 Repeater**

Frequency:

up link 1850-1910MHz,
down link 1930-1990MHz

Functions:

- Adopt duplex design.
- **100m² indoor coverage.**
- Practical, beautiful and easy to install.
- ATT&ALC auto-adjustment for electronic level

Accessories:

- One booster
- One outdoor antenna
- One indoor omnidirectional antenna
- 5-meter standard cable



**AT-4800P 10dBm
PCS 1900 Carrier
Repeater**

Frequency: up link 1850-1910MHz,
down link 1930-1990MHz

Functions:

- Adopt duplex design, Communication in car more easy, Practical, beautiful and easy to install.
- Both 12V and 24V can be in commission.

Accessories:

- One booster
- One car antenna
- One omnidirectional antenna



**AT-6000P 23dBm
PCS 1900 Repeater**

Frequency:

up link 1850-1910MHz,
down link 1930-1990MHz

Functions:

- Adopt duplex design.
- **500m² indoor coverage.**
- Practical, beautiful and easy to install
- ATT&ALC auto-adjustment for electronic level.

Accessories:

- One booster
- One outdoor antenna
- One indoor omnidirectional antenna
- 5-meter standard cable



**AT-6200P 27dBm
PCS 1900 Repeater**

Frequency:

up link 1850-1910MHz,
down link 1930-1990MHz

Functions:

- Adopt duplex design.
- **800m² indoor coverage.**
- Practical, beautiful and easy to install.
- ATT&ALC auto-adjustment for electronic level.

Accessories:

- One booster
- One outdoor antenna
- One indoor omnidirectional antenna
- 5-meter standard cable



• MINI REPEATER SELECTIVE BAND



AT-6000GS 15dBm
GSM Selective band Repeater

Frequency:

Customization (single-selective band or dual-selective band)

Functions:

- Adopt duplex design.
- **300m² indoor coverage.**
- Practical, beautiful and easy to install.
- ATT&ALC auto-adjustment for electronic level

Accessories:

- One booster
- One outdoor antenna
- One indoor omnidirectional antenna
- 5-meter standard cable



AT-6000CS 15dBm
CDMA Selective band Repeater

Frequency:

Customization (single-selective band or dual-selective band)

Functions:

- Adopt duplex design.
- **300m² indoor coverage.**
- Practical, beautiful and easy to install.
- ATT&ALC auto-adjustment for electronic level

Accessories:

- One booster
- One outdoor antenna
- One indoor omnidirectional antenna
- 5-meter standard cable



AT-6000DS 15dBm
DCS Selective band Repeater

Frequency:

Customization (single-selective band or dual-selective band)

Functions:

- Adopt duplex design.
- **300m² indoor coverage.**
- Practical, beautiful and easy to install.
- ATT&ALC auto-adjustment for electronic level.

Accessories:

- One booster
- One outdoor antenna
- One indoor omnidirectional antenna
- 5-meter standard cable



AT-6000PS 15dBm
PCS Selective band Repeater

Frequency:

Customization (single-selective band or dual-selective band)

Functions:

- Adopt duplex design.
- **300m² indoor coverage.**
- Practical, beautiful and easy to install.
- ATT&ALC auto-adjustment for electronic level.

Accessories:

- One booster
- One outdoor antenna
- One indoor omnidirectional antenna
- 5-meter standard cable



AT-6000WS(3G) 15dBm
WCDMA Selective band Repeater

Frequency:

Customization (single-selective band or dual-selective band)

Functions:

- Adopt duplex design.
- **300m² indoor coverage.**
- Practical, beautiful and easy to install.
- ATT&ALC auto-adjustment for electronic level.

Accessories:

- One booster
- One outdoor antenna
- One indoor omnidirectional antenna
- 5-meter standard cable

• GSM+3G MINI REPEATER DUAL BAND

Mini repeater dual band can be applied to solving the problems of indoor coverage in signal blank areas such as car parking lot, office etc.



AT-4100GW 10dBm
GSM 900+WCDMA 2100

Frequency:

up link 890-915MHz & 1920~1980MHz
down link 935-960MHz & 2110~2170MHz

Functions:

- Adopt duplex design.
- **100m² indoor coverage.**
- Practical, beautiful and easy to install.
- ATT&ALC auto-adjustment for electronic level



AT-6000GW 15dBm
GSM 900+WCDMA 2100

Frequency:

up link 890-915MHz & 1920~1980MHz
down link 935-960MHz & 2110~2170MHz

Functions:

- Adopt duplex design.
- **300m² indoor coverage.**
- Practical, beautiful and easy to install.
- ATT&ALC auto-adjustment for electronic level



AT-6100GW 23dBm
GSM 900+WCDMA 2100

Frequency:

up link 890-915MHz & 1920~1980MHz
down link 935-960MHz & 2110~2170MHz

Functions:

- Adopt duplex design.
- **500m² indoor coverage.**
- Practical, beautiful and easy to install.
- ATT&ALC auto-adjustment for electronic level



AT-6200GW 27dBm
GSM 900+WCDMA 2100

Frequency:

up link 890-915MHz & 1920~1980MHz
down link 935-960MHz & 2110~2170MHz

Functions:

- Adopt duplex design.
- **800m² indoor coverage.**
- Practical, beautiful and easy to install.
- ATT&ALC auto-adjustment for electronic level

• GSM+DCS MINI REPEATER DUAL BAND



AT-4100GD 10dBm
GSM 900+DCS 1800

Frequency:

up link 890-915MHz & 1710~1785MHz
down link 935-960MHz & 1805~1880MHz

Functions:

- Adopt duplex design.
- **100m² indoor coverage.**
- Practical, beautiful and easy to install.
- ATT&ALC auto-adjustment for electronic level



AT-6000GD 15dBm
GSM 900+DCS 1800

Frequency:

up link 890-915MHz & 1710~1785MHz
down link 935-960MHz & 1805~1880MHz

Functions:

- Adopt duplex design.
- **300m² indoor coverage.**
- Practical, beautiful and easy to install.
- ATT&ALC auto-adjustment for electronic level



AT-6100GD 23dBm
GSM 900+DCS 1800

Frequency:

up link 890-915MHz & 1710~1785MHz
down link 935-960MHz & 1805~1880MHz

Functions:

- Adopt duplex design.
- **500m² indoor coverage.**
- Practical, beautiful and easy to install.
- ATT&ALC auto-adjustment for electronic level



AT-6200GD 27dBm
GSM 900+DCS 1800

Frequency:

up link 890-915MHz & 1710~1785MHz
down link 935-960MHz & 1805~1880MHz

Functions:

- Adopt duplex design.
- **800m² indoor coverage.**
- Practical, beautiful and easy to install.
- ATT&ALC auto-adjustment for electronic level

•CDMA+PCS MINI REPEATER DUAL BAND



AT-4100CP 10dBm CDMA 800+PCS1900

Frequency:

up link 824~849 & 1850~1910MHz,
down link 869~894 & 1930~1990MHz;

Functions:

- Adopt duplex design.
- **100m² indoor coverage.**
- Practical, beautiful and easy to install.
- ATT&ALC auto-adjustment for electronic level



AT-6000CP 15dBm CDMA 800+PCS1900

Frequency:

up link 824~849 & 1850~1910MHz,
down link 869~894 & 1930~1990MHz;

Functions:

- Adopt duplex design.
- **300m² indoor coverage.**
- Practical, beautiful and easy to install.
- ATT&ALC auto-adjustment for electronic level



AT-6100CP 23dBm CDMA 800+PCS1900

Frequency:

up link 824~849 & 1850~1910MHz,
down link 869~894 & 1930~1990MHz;

Functions:

- Adopt duplex design.
- **500m² indoor coverage.**
- Practical, beautiful and easy to install.
- ATT&ALC auto-adjustment for electronic level



AT-6200CP 27dBm CDMA 800+PCS1900

Frequency:

up link 824~849 & 1850~1910MHz,
down link 869~894 & 1930~1990MHz;

Functions:

- Adopt duplex design.
- **800m² indoor coverage.**
- Practical, beautiful and easy to install.
- ATT&ALC auto-adjustment for electronic level

Wifi Repeater

Frequency: 2.4-2.4835GHZ

Function:

Power:36dBm
RX Gain:≥9dB
TX Gain:≥15dB
100-500m2 indoor coverage

Accessories:

- One booster
- One indoor wifi antenna
- One cable
- One Power supply



AT-7100GDW Tri-band Mini Repeaters

Frequency:

- Uplink:
890-915MHz, 1710-1785MHz, 1920-1980MHz
- Downlink:
935-960MHz, 1805-1880MHz, 2110-2170MHz

Function:

- Adopt duplex design.
- **500m² indoor coverage.**
- ATT&ALC auto-adjustment for electronic level.

SALES TEAM

Nowadays, customers are looking for products of high quality, with suitable prices and speedy fulfillment services. Our CE and ROHS-marked products meet international standards and are reliable. Contact our professional and experienced salespeople to experience our superb services now.





All Kinds Of
Accessories
For more inquires
call me now

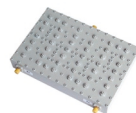
Others



QX-014B
5-20dB 800-2500MHz
Microstrip coupler



QX-015B
5-30dB 800-2500MHz
5-50dB 800-2500MHz
Cavity coupler



QX-016B
Duplexer

Power Splitter



QX-008B
800-2500MHz
Two-Way Microstrip
Power Splitter



QX-009B
800-1000MHz
800-2500MHz
Three-Way Microstrip
Power Splitter



QX-010B
800-2500MHz
Four-Way Microstrip
Power Splitter



QX-011B
800-2500MHz
Two-Way Cavity
Power Splitter



QX-012B
1710-2500 MHz
Three-Way
Cavity Power Splitter



QX-013B
Four Way
800-2500MHz
Four-Way Cavity
Power Splitter

High Gain Antenna Series



QX-038B High gain antenna
ST-8.5-150U-2/ST-10-400U-2/ST-4.5-77V-2



QX-039B High gain antenna
ST-6.5-150V-1/ST-8.5-400V-1/ST-3-77V-1

CB Radio Antenna



QX-0012A
ST-BG-1.3-27V-ML145 MAG



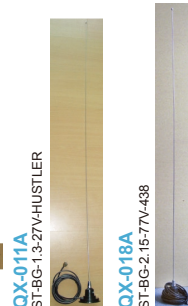
QX-0013A
ST-BG-1.3-28V-ML145



QX-0014A
ST-BG-4-27V-Cod.T638



QX-0015A
ST-BG-4-27V-Super9



QX-011A
ST-BG-1.3-27V-HUSTLER



QX-018A
ST-BG-2.15-77V-438



QX-019A
ST-BG-1.8-77V-1

UHF/VHF High Gain Full Band Antenna



QX-020A
ST-BG-5.5-400-470V-1



QX-021A
ST-BG-5.5-136-174V-1

Carrier-Antenna & Sucker



ST-400
400 Clip-base
Interface:SL16



ST-73-16
Small Magnetic-base Iron sucker
Dia.:73mm
Interface:SL16



ST-100-16
Magnetic-based Rubber
plastic sucker
Dia.:100mm
Interface:SL16



ST-110-16
Magnetic-based plastic sucker
Dia.:110mm
Interface:SL16



QX-016A
Vehicle antenna
144-146MHz etc.
430-440MHz etc.

Rubber Antenna Series



QX-040B
ST-400U-378G



QX-041B
ST-400U-3118G



QX-042B
ST-400U-3107



QX-043B
ST-150V-278G



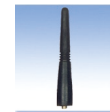
QX-044B
ST-150V-2118



QX-045B
ST-150V-2107



QX-046B
ST-150V-VX400



QX-047B
ST-150V-GP88



QX-048B
ST-150V-GP88

GSM/CDMA Antenna



QX-001B
ST-XD-2-900/2500V4
Gain 3 dBi



QX-002B
ST-XG-9-300/2500VYB
Gain 7 dBi (824-960MHz)
9 dBi (1710-2500MHz)



QX-003B
ST-XD-3-800/2500VYB-2
Gain 3 dBi



QX-004B
ST-XG-9-800/2500V6
Gain 7 dBi (824-960MHz)
9 dBi (1710-2500MHz)



QX-005B
ST-X-4-900VB
Gain 3 dBi



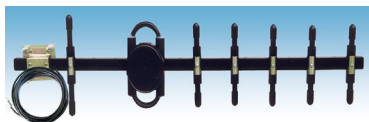
QX-001W
ST-TQWTP-13-080/092
824-896MHz 890-960MHz
Gain 13dBi



QX-002W
ST-PS-17-900V 824-960MHz
ST-PS-20-1500V 1.4-1.6GHz
ST-PS-22-1800V 1.71-1.9GHz



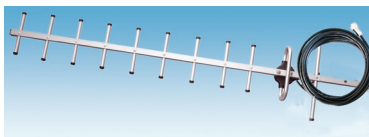
QX-014A
GSM/CDMA/DCS
Vehicle antenna



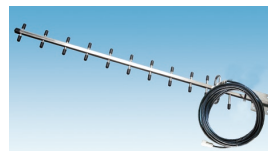
QX-006B ST-M-11-824/960V-B2
Gain 9 dBi
with 10m cable



QX-007B 5-Meter cable
(SYWV-50-5)



QX-001H ST-M-13-900V-1 13dBi with 10m cable



QX-002H
DCS 1800MHz outdoor antenna 13dBi
PCS 1900MHz outdoor antenna 13dBi
with 10m cable



QX-004H
GSM+DCS
CDMA+PCS
Outdoor antenna
with cable 9dBi
800-2500MHz

Substitute Battery For KENWOOD Series



QX-001BT
KNB-15A For
(TK-278/378)
(TK-2107/3107)
1500mA/7.2V



QX-002BT
KNB-14 For
(TK-278/378)
(TK-2107/3107)
1500mA/7.2V



QX-003BT
KNB-29 For
(TK-2207 TK-3207)
1500mA/7.2V



QX-004BT
PB-41 Long For
(TK-2118 TK-3118)
1200mA/7.2V



QX-005BT
Battery case



Different model for
TK-3107 TK-3207
TK-3118 ST-518 Gp88
(Made by Customer need)

Substitute Battery For YAESU / ICOM Series



QX-012BT
FNB-V57(VX-418)
1500mA/7.2V



QX-014BT
BP-224(IC-M32)
1500mA/7.2V



QX-015BT
BP-210(IC-V8)
1500mA/7.2V



QX-016BT
FNB-V57(VX-418)
2200mA/7.4V

Eight-ways Charger



QX-025BC
Eight-way charger
For TK-3207, AT-289, AT-288 etc.

Shoulder Microphone Series



QHM-01
FOR DR-135 II



QHM-02
For IC-F111/F221 etc.



QHM-03



QHM-04



QHM-05
For TK-271/471



QHM-22
For TK2107/TK3107



QDM-01
Desk Microphone
For AT-588/AT-5189



ISO 9001:14001



APPROVED



实力 铸就未来 • *We only do the best!*



Qixiang Electron Science & Technology Co., Ltd.

Contact person: KEN XU (General Manager)

TEL: 0086 595 22656925/0086 595 22656926
0086 13505942500

FAX: 0086 595 22656927/0086 595 22570046

E-mail: ken6833@qxdz.cn xqlx5555@126.com

MSN: ken6833@hotmail.com

Skype: ken683333

Website: <http://www.qxdz.cn>

<http://www.qx-tele.com>

<http://www.qixiang.en.alibaba.com>

<http://www.globalsources.com/qixiang.co>

Address: Qixiang Building, Tangxi Industrial Zone,
Luojiang District, Quanzhou 362011, Fujian Province, China.