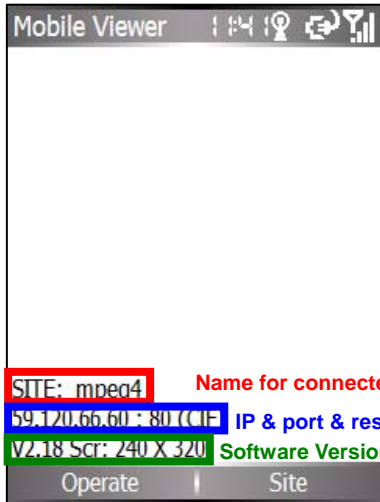


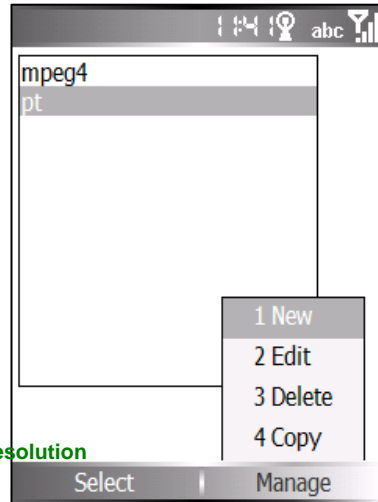
1. Copy IPCamconfig.txt and viewer.exe to Mobile device.
2. Run viewer.exe on mobile device.



3. The interface when logo in.

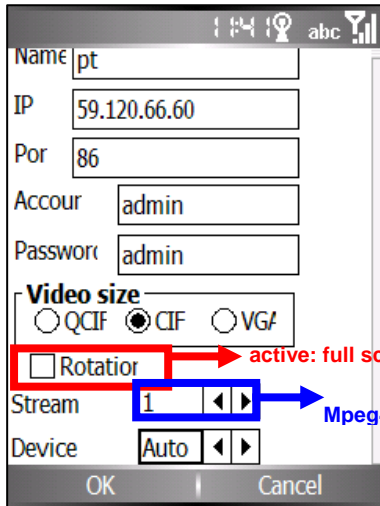


4. /Site/Manage/New to create New Site



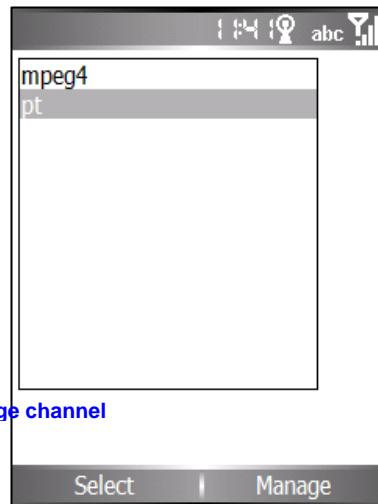
- Create a new site
- Edit a saved site
- Delete a saved site
- Copy a saved site

5. Input Name, IP, Port, Account, Password and Video Size. Then press OK.



6. Site is created.

Press /Select/ button to view.



DDNS NOTED
If use the DDNS2.YSDVR.COM, the PORT should be 80.

5.1 Rotator: Rotate images in full screen.

5.2 Stream: Support MPEG4 multi stream videos.

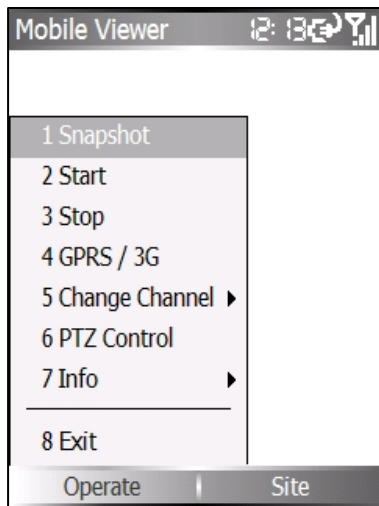
Stream num: Default: stream 1 for SINGLE stream models or MULTI streams use stream 1.
 In DVR: Stream 1 for CH 1, 2 for CH2, 3 for CH3 and 4 for CH4.

5.3 Device: Identify type of network card

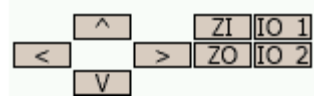
Unknown status -8: device type is mismatched.

Auto: Automatically 1: MPEG-4 2: M-JPEG 3: AXIS Models 4: MPEG-4(SD card) 5. RTSP(No Audio)

7. /Operate/



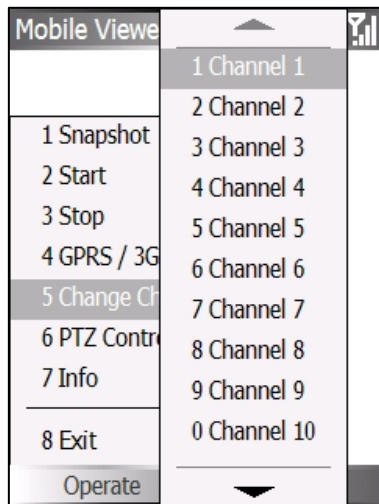
1. **Snapshot:** Capture still images
2. **Start:** Start connecting
3. **Stop:** Stop connecting
4. **GPRS / 3G:** Use GPRS/3G to connect.
Please setup the account firstly in mobile device.
5. **Change Channel:** DVR CARD Only.
6. **PTZ control:**
 <: Move Left >: Move Right
 ^: Move Up V: Move Down
 ZI: Zoom In ZO: Zoom Out
 IO1: IO1 control IO2: IO2 control
7. **Info:** Video Stream information
8. **Exit:** Exit Viewer Program



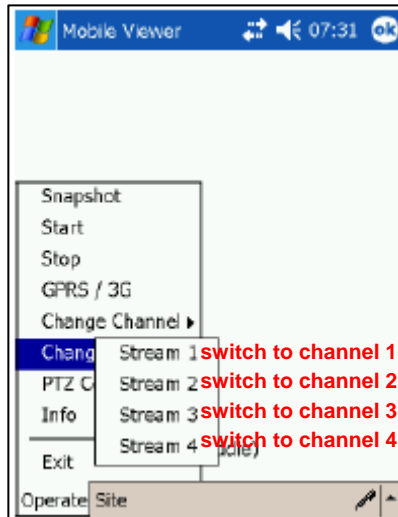
8. /Operate/Change DVR Channel (M-JPEG DVR)

(MPEG-4 DVR)

9. /Operate/Info: Show or Hide text data

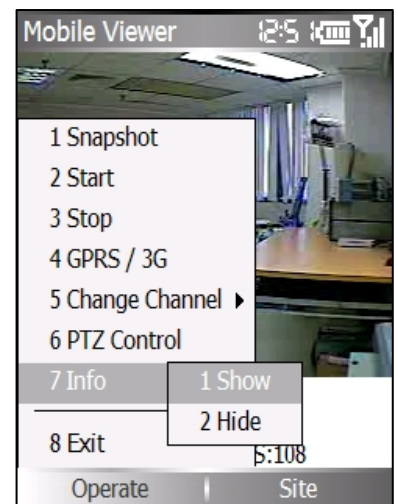


M-JPEG DVR CHANNEL SWITCH



MPEG-4 DVR CHANNEL SWITCH

- Stream1: switch to channel 1
- Stream1: switch to channel 2
- Stream1: switch to channel 3
- Stream1: switch to channel 4



PDA/Smartphone Supported Devices:

PDA based on Microsoft Windows:

1. HP HW6515/HX2200/HX4700/1510/H6365/RZ1700/RX3417/1940 (OS: PPC2003SE/WM5)
2. ASUS A716/ A620BT/ A620/A730/P535 (OS: PPC2003SE/WM5/WM6)
5. Dopod 838/838pro/D810/P800W/U1000/C800/M700/818Pro/828 (OS: WM5/WM6)

Microsoft Mobile Smart Phone:

1. DOPOD 565/575/585, Orange SPV C500, Motorola MPX220/i930, SPV C600, T-Mobile SDA, Cingular 2125 (OS: 2003SE)
2. DOPOD 577W/586W/S300/595/720W/TOUCH (OS: WM5/WM6)
3. ASUS P525/526/535/P735 (OS: WM5/WM6)

Q&A:

Q. IPCAM_VIDEO_GETFRAME_IS_ERR

A. 3G/GPRS connection is not stable or not accessible. High speed moving or signal is not strong will cause it.

Q. Unknown status -8

A. Settings of device type is mismatched.

Q. IPCAM_IS_UNCONNECTED

A. 3G/GPRS connection is not stable or not accessible. Please restart 3G/GPRS connection.