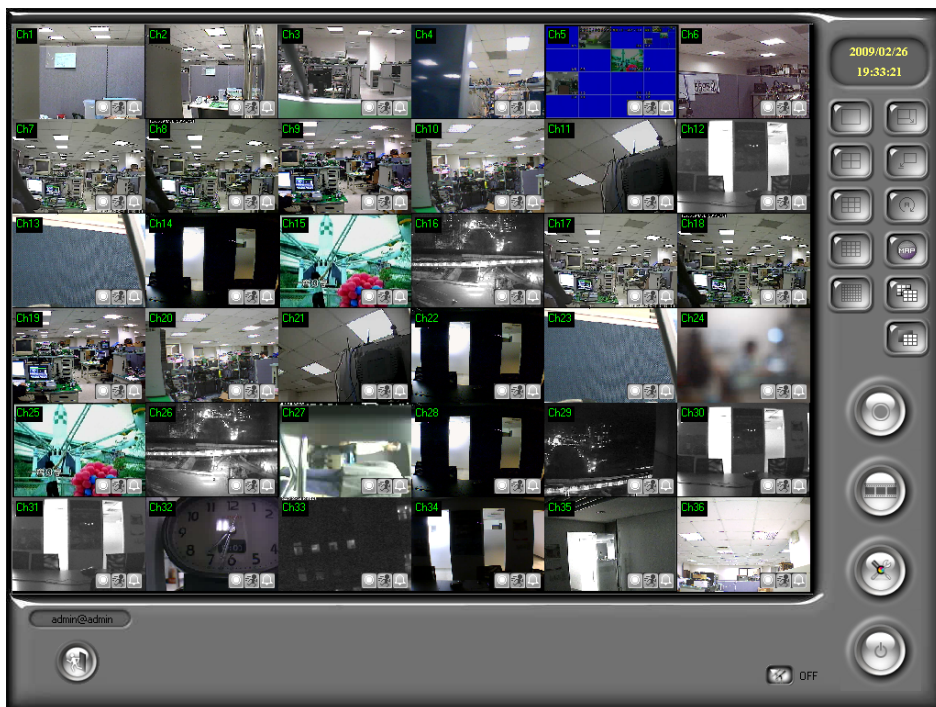


User Manual

IPCamera Recorder



Index

I.	PREFACE.....	4
II.	SYSTEM REQUIREMENTS.....	4
	A. MINIMUM REQUIREMENTS.....	4
	B. SUGGESTED REQUIREMENTS.....	5
III.	PROGRAM INSTALL AND UNINSTALL.....	5
	A. PROGRAM INSTALL.....	5
	B. UNINSTALL.....	8
IV.	SET UP FRONT-END DEVICE & HDD.....	8
	A. SET UP IP CAMERA/ VIDEO SERVER / DIGITAL VIDEO RECORDER.....	8
	B. SET UP HDD TO RECORD THE VIDEO.....	14
V.	LIVE VIDEO MONITORING.....	16
VI.	VIDEO PLAYBACK.....	19
	A. VIDEO PLAYBACK.....	19
	B. EXPORT VIDEO.....	21
VII.	DIGITAL ZOOM.....	22
VIII.	E-MAP.....	23
	A. MAP.....	23
	B. TREE VIEW.....	24
	C. EVENT RECORD.....	24
IX.	REMOTE CONTROL.....	25
	A. WEB SERVER.....	25
	B. REMOTELITE.....	31
X.	OTHERS.....	33
	A. SCHEDULE RECORD SETTING.....	33
	B. MOTION DETECTION.....	34
	C. PTZ SET UP AND CONTROL.....	34
	D. I/O SETUP.....	36
	E. MOTION/ ALARM EVENT SETUP.....	36
	F. SYSTEM.....	38
	G. PASSWORD SETUP.....	44

H.	E-MAP SETTING	45
XI.	CONFIGURE TOOL	47
A.	MONITOR RESOLUTION (DEFAULT: ON)	47
B.	ENABLE/ DISABLE “WINDOW CONTROL” (DEFAULT: OFF)	47
C.	ENABLE/ DISABLE “PC TIME” (DEFAULT: ON).....	48
D.	ENABLE/ DISABLE “PING” (DEFAULT: OFF)	48
E.	ENABLE/ DISABLE “OVERLAY” (DEFAULT: ON).....	48
F.	BACKUP CONFIGURATIONS.....	49
XII.	PRODUCT SPECIFICATIONS.....	50
XIII.	GRAPHIC CARD TEST TABLE.....	53

I. Preface

IPCamera Recorder (includes 1,4,9,16 and 36 channels) is a video recording software which supports IP Camera, Video Server and Digital Video Recorder. People use IPCamera Recorder to monitor the real-time video, record the video on PC then playback the recorded video when necessary.

IPCamera Recorder supports 5 different ways to record the video, including normal recording, schedule recording, motion-triggered recording, alarm-triggered recording and manual recording. Moreover, E-Map and Multi-Monitor are the build-in functions within IPCamera Recorder.

Via activating the function of web server, IPCamera Recorder provides web browser and RemoteLite program for user demand.

II. System Requirements

A. Minimum Requirements

- i. CPU: Intel Pentium 4 2.0G
- ii. Memory: 1GB
- iii. VGA card: 128MB External Graphic Card or above
- iv. Monitor Resolution: 1024 x 768
- v. OS: Windows Vista/ XP / 2000
- vi. File System: NTFS*


(*IPCamera Recorder still can operate in FAT32 file system. However, it will waste much time while set up the volume of hard disk and it is worse when write the recording data into the hard disk. Therefore, FAT32 file system is not suggested to use.)

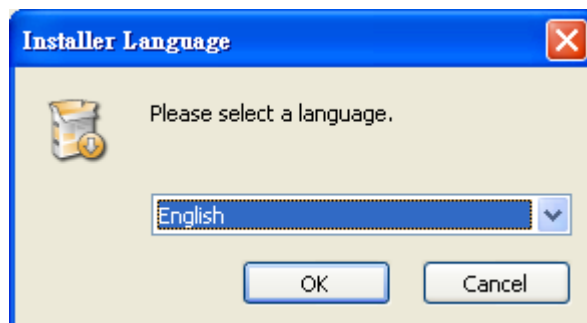
B. Suggested Requirements

- i. CPU: Intel Core 2 Quad Q6600 or above
- ii. Memory: 2GB
- iii. VGA card: 256MB External Graphic Card or above
- iv. Monitor Resolution: 1024 x 768
- v. OS: Windows Vista/ XP/ 2000
- vi. File System: NTFS

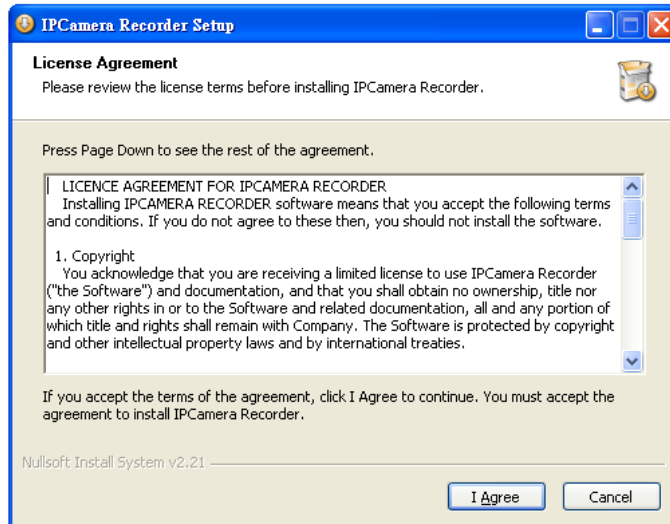
III. Program Install and Uninstall

A. Program Install

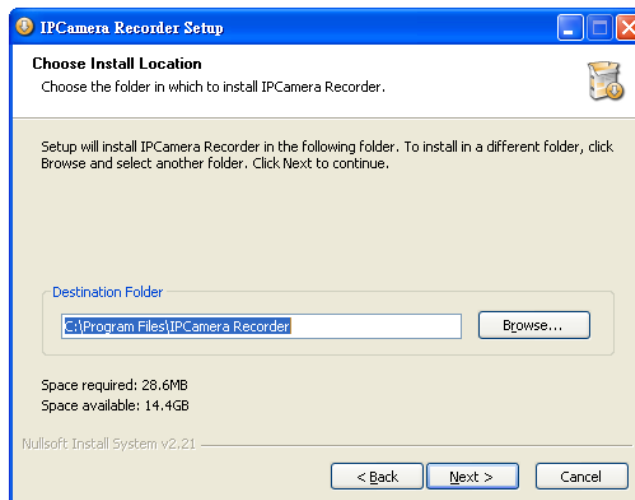
- i. To install IPCamera Recorder, please double click .
- ii. Please select the language for the requirement. Currently, IPCamera Recorder supports "Tradition Chinese", "Simple Chinese", "English", "Polish", "Japanese" and "German" six sorts of languages.



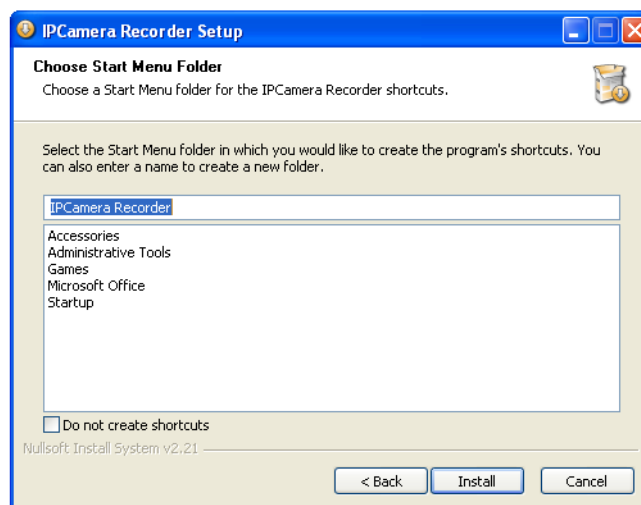
- iii. License Agreement. Select "I Agree" › Go to the next step.



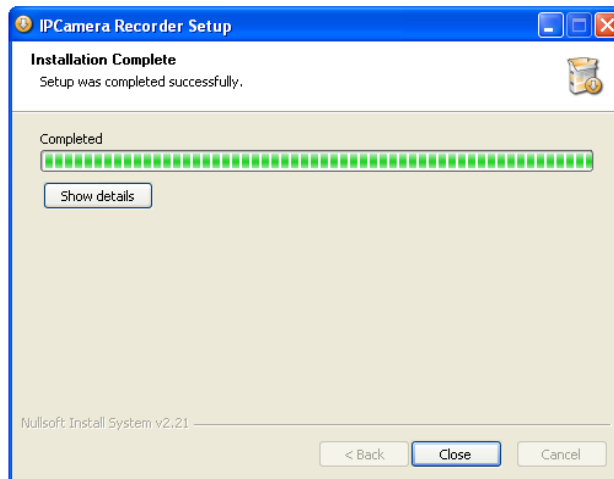
- iv. Select the directory for IPCamera Recorder. The default installation directory is "C:\Program Files\IPCamera Recorder". Select "Next".



- v. Set up the name of the program folder. The default is "IPCamera Recorder". Click "Install" to start the installation.



- vi. When finish, click “Close” to close the procedure of the installation.



- vii. To start the program, select “Start” →”Program”→”IPCamera Recorder ”→”IPCamera Recorder”. In Windows Vista, please right-click on the short cut icon of IPCamera Recorder or the main program, then select “Run as administrator” to start the program. Please refer to following example which is based on 36H IPCamera Recorder.



- viii. Additional monitor screen might be seen if second monitor is connected.
ix. In the IPCamera Recorder, the first and the second live-viewing screens are similar, but the number of the channels displayed on the screen might be different.

x. If multi-monitor is not supported by PC, the multi-monitor mode



and the multi-monitor ON/OFF



will be inactivated.

B. Uninstall

- i. To uninstall the program, select “Start” → “Program” →”IPCamera Recorder”→”Uninstall” to remove the program.



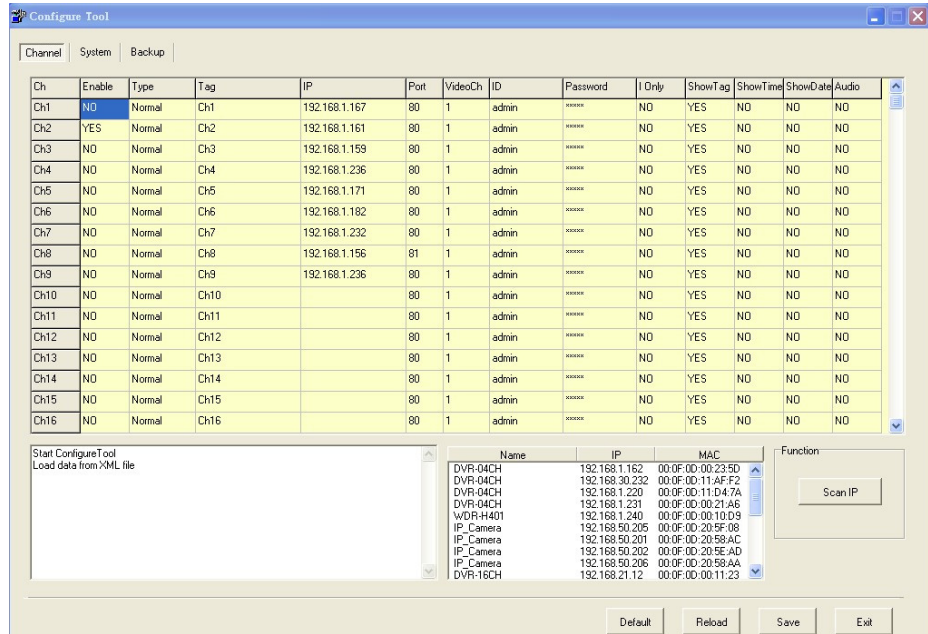
IV. Set up front-end device & HDD

To start recording, please set up the IP camera/ Video server & HDD.

A. Set up IP Camera/ Video Server / Digital Video Recorder

There are 2 ways to set up the IP Camera/ Video Server

- i. Configure Tool
 - a. Select “Start”→ “Program” → “IPCamera Recorder” → ”Tools”→ ”Configure tool”. In Windows Vista, please right-click on the desktop short cut or configure tool, then select “Run as administrator” to start the program.







- b. "Configure tool" integrates "IPInstaller". When start "Configure tool", it will search IP camera & video server automatically. To re-search the device, please click "Scan IP".
 - c. Select the IP camera/ video server you would like to add. Drag-and-drop to the video channel listed above. Then type the username & password of the device.
 - d. When finish the configuration, click "Save" to save all the information.
- ii. Set up IP camera/ video server in the administration page

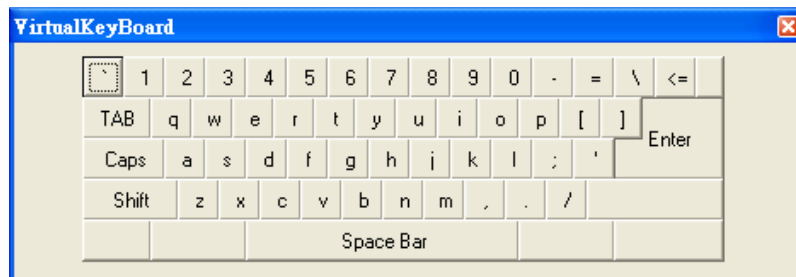


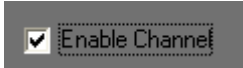
- a. Select  to enter IP camera/ video server set up page.

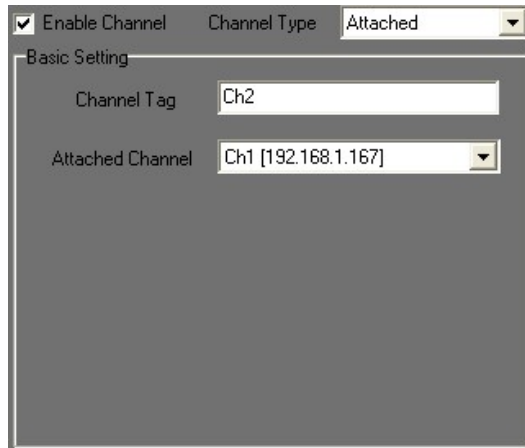
Note: The following examples are base on 36CH IPCamera Recorder.



- b. There are 18 channels listed on the left side of the administrator page. Users can use   to switch 1-18, 19-36 channels. Moreover, users can use either keyboard to enter the setup values,  or the mouse to click  to activate the virtual keyboard to configure each channel.



- c. Camera can be configured in the general setup page. First, click  to enable each channel and to set each camera.
- d. Please select channel type (Normal or Attached):
 Normal: The same as the main setup page.
 Attached: If user selects one channel as attached channel type, user has to select video source. Moreover, due to the attached channel is not physically linked to any camera; it will not cost any bandwidth loading.



Application of attached channel: Attached channel type can operate with the digital zoom function. User can select different spots in the main channel and attach to different attached channels. Because attached channel type is not physically linked to any camera; such channel will not cost any loading of camera or HDD space. For instance, the following figure shows that CH2, 3 and 4 are only three parts of the CH1.



- e. In the basic setting as showed below, channel name can be saved in the “Channel Tag” to distinguish each channel. IP address is indicating the channel. With IP Share (Router), the Port needed to be adjusted in case of conflict. Fills in the ID and the Password for



each channel, then click to connect each device or channel.



Click  will enable IE to browse each channel.

Basic Setting



Channel Tag

IP

Port Ch

ID

Password

- f. Within the Image setup page as showed below, users can alter image Resolution, Quality, Video Format, and Frame Rate.

Image

Resolution

Quality

Video Format

Frame Rate

- g. In the Pre & Post Alarm Recording setting page as showed below, users can change the recording time interval.

Pre & Post Alarm Recording

Alarm Recording

Pre/Post / sec

- h. In the Information setting page as showed below , Tag / Date / Time can be displayed on the live viewing .

Information

Show Tag Apply to all channel

Show Date

Show Time

- i. In the Display setting page as showed below , users can select display mode.

Display


Display I frame only Disable Digital Zoom

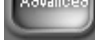

When **Display I frame only** is selected, only I-Frame will be transferred and displayed in live-viewing; Enabling **Disable Digital Zoom** will cause live-viewing to display the original image size (as showed below).



- j. In the Audio setting as showed below , clicks “Enable Audio” to enable audio recording.




- k. Before exiting administration page, remember to click  to save all the configurations.

- l. Moreover, in advanced setup, click  to setup the tag, Date /Time and status location of each shown channel. Click  within advanced setting can setup such as the size, format and color of tag, Date/Time and status.



NOTE: The advanced setting will apply to all shown channels.


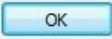
B. Set up HDD to record the video

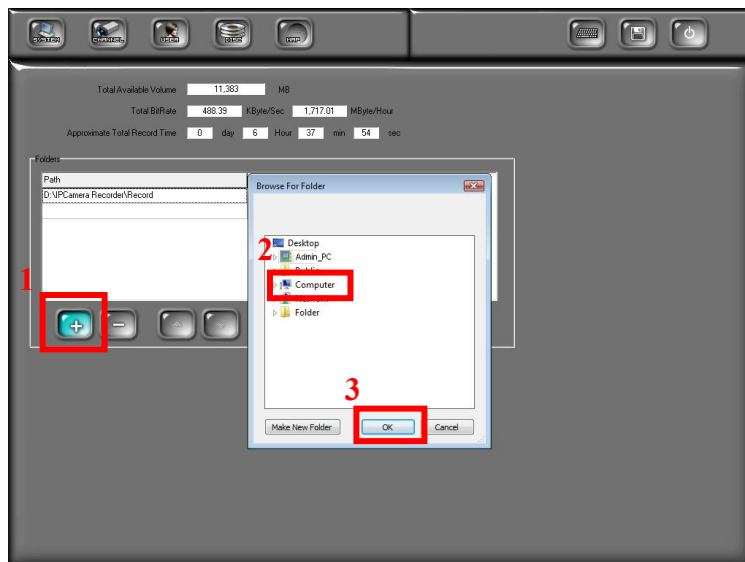
To record the video on PC, HD space is better to be set first. Or, IPCamera Recorder will perform the record by the default setting (Based on the HD space).





- i. Start the program, enter administration page and click  button to the disk setup page.
- ii. Before the space is set, the default setting path is the folder, Record, which the software installed. Moreover, the default setting of available data storage quantity is No Limitation.

Path	Used(MB)	Free(MB)	Available(MB)	ReadOnly
C:\Program Files\IPCamera Recorder\Record	0	3,489	No Limitation	N
		0	No Limitation	N

- iii. If the new recording path would be added, click  button to add the new recording path. In contrast, click  button to delete the recording path.

- iv. To add the new recording path, click  button first.
- v. Then, use the mouse to select the path and click  button to complete the setting. The image is shown in the following,









- vi. After complete the new recording path setting, click  /  (Up and Down) to select the sequence of the recording path. While the disk space of the priority path is full, the recorded data will be reserved in the next path.
- vii. To mount the available space, click the data recording path first. Then, click  /  of the “Available (MB)” to mount the space. Moreover, use the keyboard can mount the space as well.





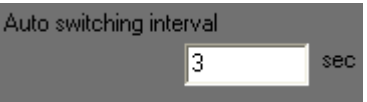




Path	Used(MB)	Free(MB)	Available(MB)	ReadOnly
D:\IPCcamera Recorder\Record	961	4,243	1,024	N
		0	No Limitation	N




- viii. Finally, click  to reserve all the settings.




V. Live Video Monitoring

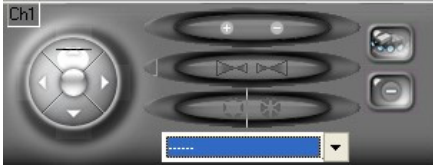
- i. IPCamera Recorder supports the following real-time monitoring mode.


- a. 36 Channel IPCamera Recorder can switch 36-CH , 16-CH , 9-CH , 4-CH , 1-CH , and multi-monitor  (16CH each).

- ii.  : Enable/Disable multi-monitor.
- iii.  : Full Screen mode. To exit the full screen mode, use “Esc” or right-click the mouse.
- iv.  : Minimize the program.
- v.  : Auto rotating channel. Users can set switching time interval  , and determine the initial screen split value .
- vi.  : Manual recording. To start recording immediately. Moreover, to click the button again can stop recording.
- vii.  : Recorded video playback.
- viii.  : Get into administration page.


- ix.  : Get into E-Map
- x.  : Close the program
- xi.  It shows the status of each channel.


-  Indicate the video recording status.
-  Indicate Motion Detection.
-  Indicate Alarm status.


- xii.  : PTZ controller interface. Provides Focus、Zoom、IRIS、Auto/ Stop Patrol and Preset Point control.

- xiii.  : DVR Control Panel. When the selected channel is DVR, It will show the control panel to control DVR, such as change split, playback and so on.

- xiv.  : Digital Zoom Control Panel. After selected the channel, the extra image zoom window will be displayed to control the digital zoom in/out.

- xv.  : I/O switch. There are up to 4 I/O controls. (if remote device supported)

- xvi.  : Chatting switch. On/Off 2-way audio (if remote device supported).


- xvii.  : Broadcast switch. On/Off broadcast function (if remote device supported).

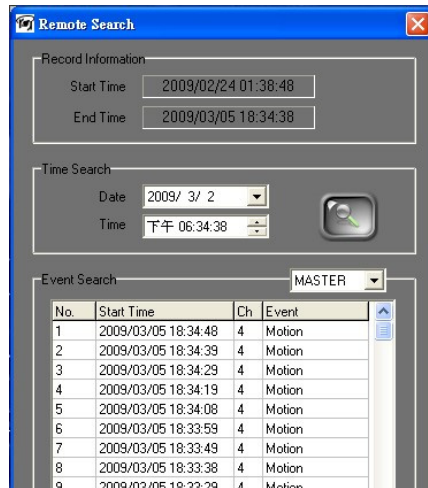
xviii.



: 04CH MPEG4 DVR Playback Control Panel.


When selected channel is 04CH MPEG4 DVR module, the control panel

will reveal. Click  button can perform playback via time and event searches as following:

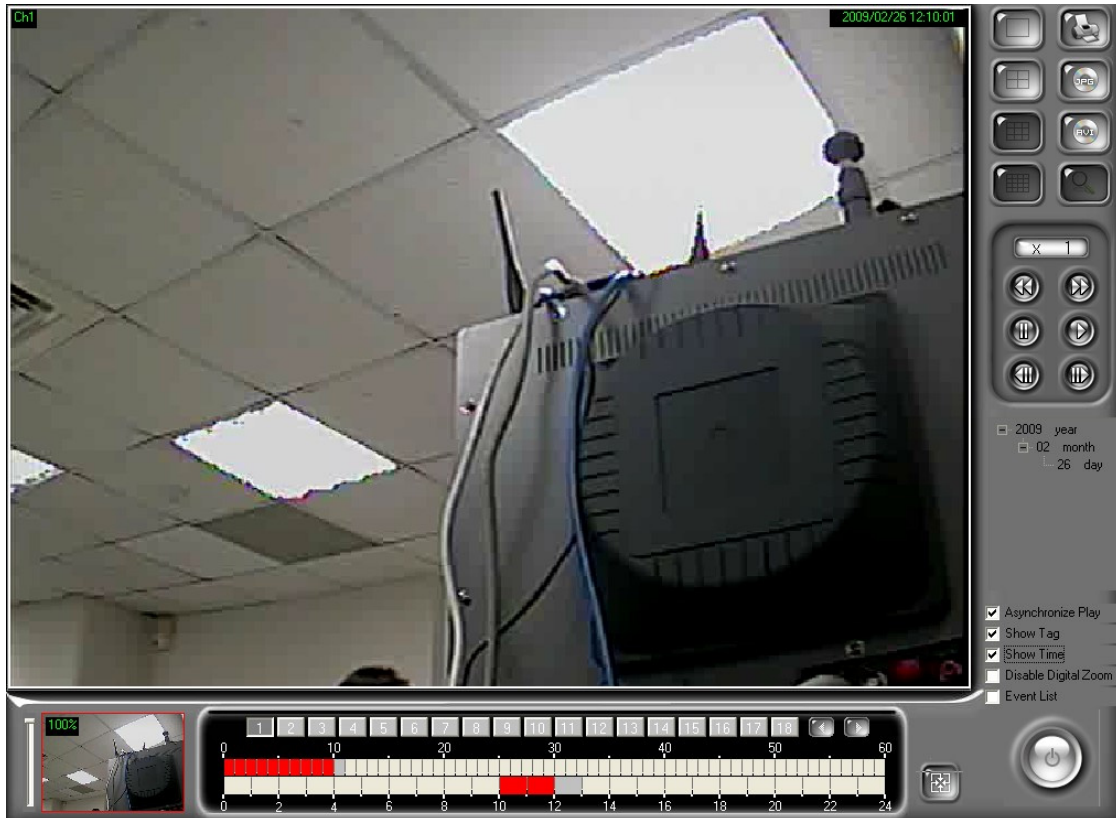


VI. Video Playback



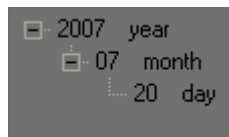
Click  to enter video playback mode.



Note: The following example is based on 36CH IPCamera Recorder.



A. Video Playback

- i. Use calendar to select the date. As shown in the following figure, the “day” means there are recorded data in that day. For example, there are videos in 2007/07/20.

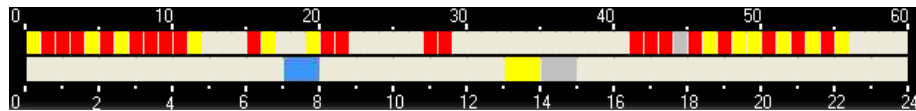








- ii. After selecting the date, please click   to select the video channel you would like to play (36CH version).

1	2	3	4	5	6	7	8	9	10	11	12	13	14	15	16	17	18
19	20	21	22	23	24	25	26	27	28	29	30	31	32	33	34	35	36

IPCamera Recorder supports different kinds of playback mode. Currently, IPCamera Recorder supports up to four channels synchronized and asynchronous playback.

- iii. When choose the date and video channel, it will show the recording status.



- a. No color: No video data.
 - b. Red: Normal recording data.
 - c. Yellow: Motion-triggered recording data.
 - d. Blue: Alarm-triggered recording data.
 - e. Gray: The time you choose to play.
- iv. Click  to start playback. Click  to pause it
 - v. Use   to fasten the speed. 1x, 2x, 4x, 8x, 16x and 32x available (depends on the hardware and total channels).
 - vi. Use   to go to previous/ next frame.
 - vii. Check “Asynchronize Play” to enable different time and channel playback.
 - viii. Check “Show tag”, “Show time” to show title & time on each channel.
 - ix. Check “Disable Digital Zoom” to see the original size of the video.
 - x. Check “Event List” to see the event records.

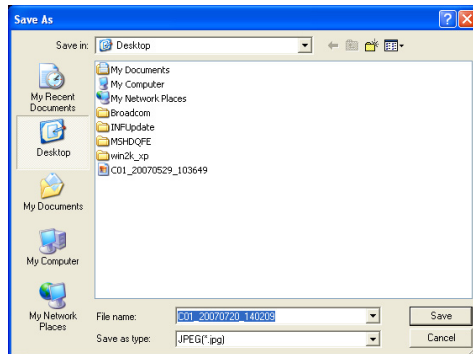
B. Export Video

Video data can be export as JPG or AVI format.

A. Export as JPEG format:



- i. Click . It will show the following dialogue box.



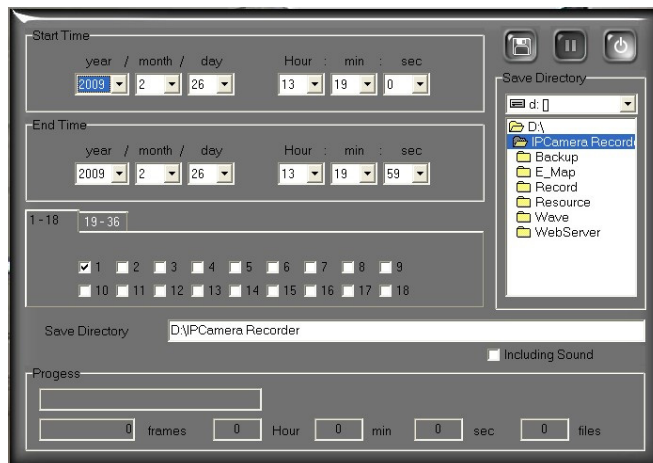
- ii. The filename will be “channel number_yyyymmdd_hhmmss.jpg”.

B. Export as AVI format




- i. Click . It will show the following dialogue box.

Note: The following figure is based on 36CH IPCamera Recorder. Different version may have different layouts.



- ii. Select “start time”, “end time”, “video channel”, and the directory to save

the video. Click  to start the procedure.

- iii. To record voice, please check “including Sound”. 
- iv. It exports the video into different AVI files for each channel if multi-channel have bee selected.

VII. Digital Zoom

When enabling the digital zoom function, user can zoom in/out the image to get proper view. Digital zoom can be functionalized in live-viewing, playback viewing, second live-viewing and remote program. The following figures refer to the digital zoom panel.



There are three parts of the digital zoom panel.





- i. **Preview window:** The image or video in the preview window is not live, the image frame will be updated within a time interval. The red frame indicate the live-viewing window, and the number of the left-down corner indicate the zooming rate.



- ii. **Digital zooming bar:** By moving the control bar up or down, the live-viewing and preview window will be zoomed in or out. The zoom rate is from 100% to 1000%.
- iii. **Zoom status:** By un-check this function, the image or video will be displayed in the original size.

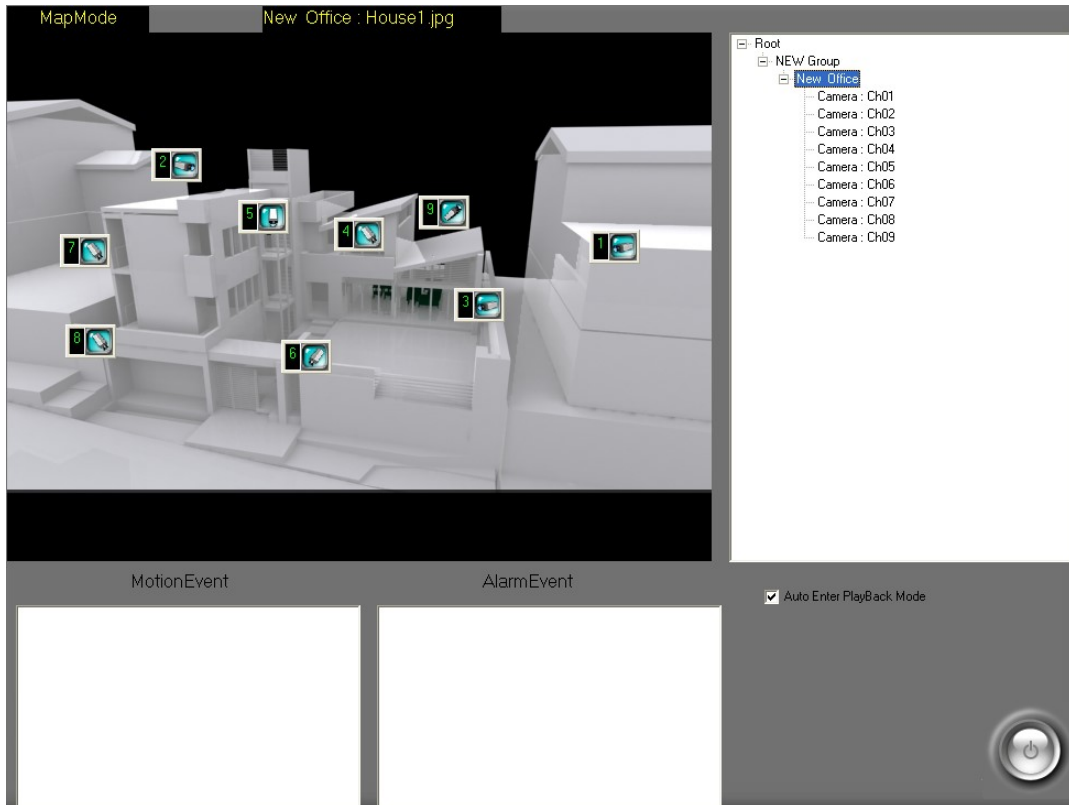
The default of the digital zoom is enabled. User can change the default by

clicking  in the main page and click  to enter the channel setup

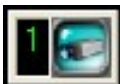
page. Check **Disable Digital Zoom** to disable digital zoom control.

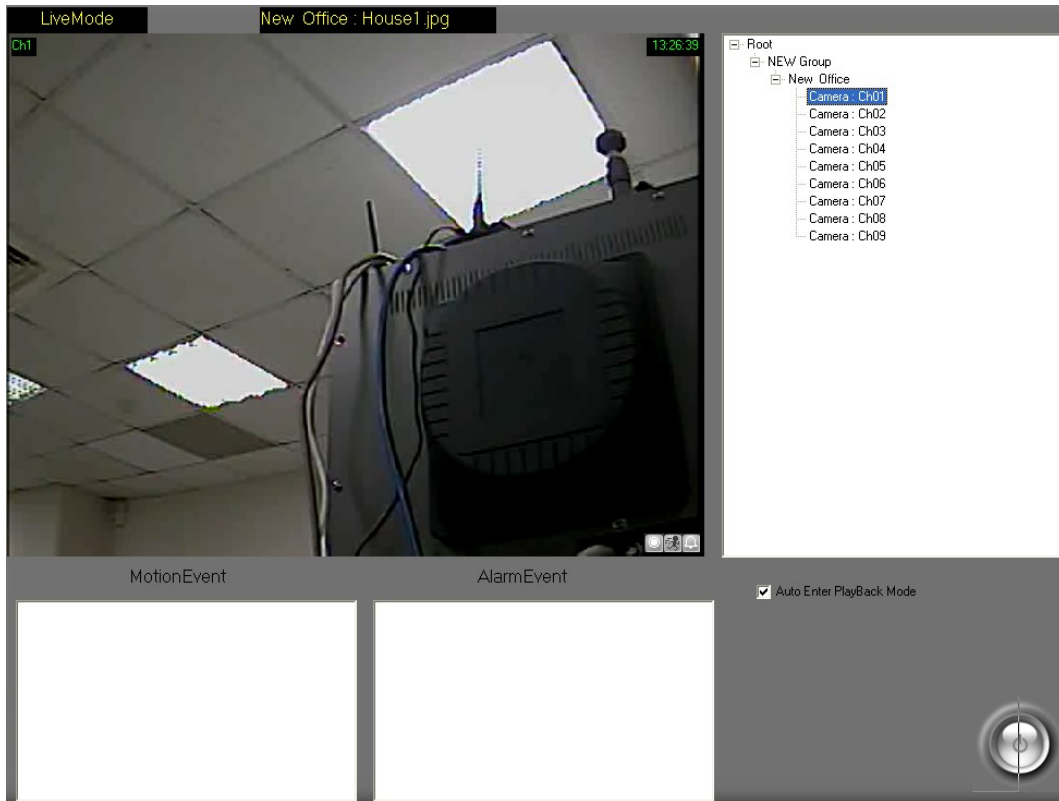
VIII. E-Map

Click  to enter E-map.



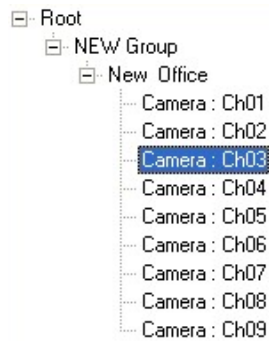
A. Map

The camera icon  and alarm icon will blink when motion or sensor are triggered. Double click the icon can see the live video if necessary.



B. Tree View

It will show the camera list on the right hand side of E-Map page. Double click the



camera to see the live video.


C. Event Record

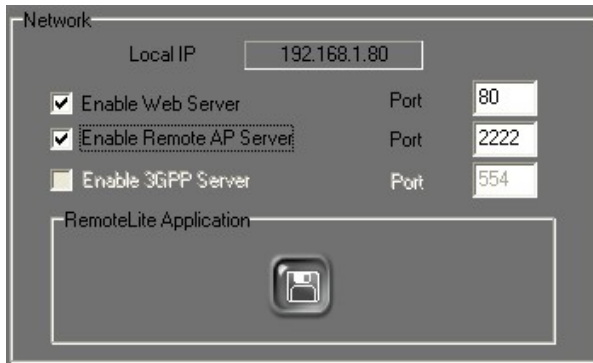
All the events (motion & alarm) will be listed on the bottom of this page. Selecting each specific event will trigger each event to playback.

IX. Remote Control

After activating the function of Web server, IPCamera Recorder provides web server browser and RemoteLite program for user's demand.




Enter the administrator page, please click  and activate web server within Network setting area which is shown in the following.



A. Web Server

Enable Web Server will allow web browser to connect to recording software server to monitor real-time image. Please refer to instructions in the following.

- i. Connection Method: In Windows Vista, please click right click on the IE web browser and select "Run as administrator" to start the program. For example, within Internet Explorer 7, input the address: <http://192.168.1.104/> (which is seen in above image ).
- ii. Connection Page: After successfully connected, the user will see the operating interface shown in the following:

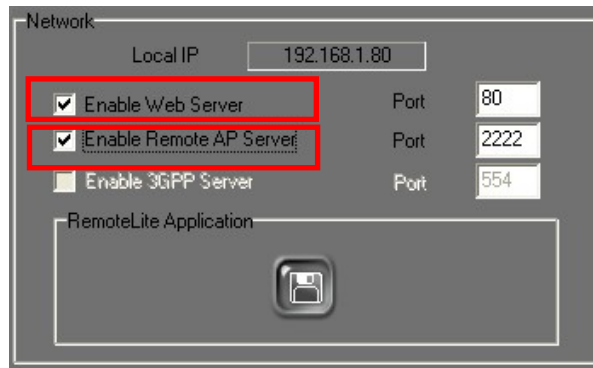


Remote Monitoring Options

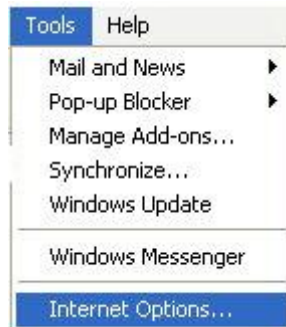
Online Monitoring

Upper-Left of the connection page shows the Language options, which includes "traditional Chinese", "simplified Chinese" and "English" options currently. The following are the remote monitoring options:

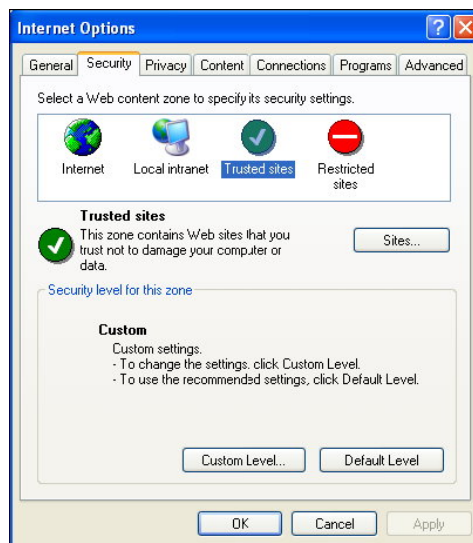
- iii. On-Line Monitoring: The function has to operate with "Remote AP Server" enabled. If the OS has installed Windows XP or Windows Vista, please perform the following internet options setting steps:



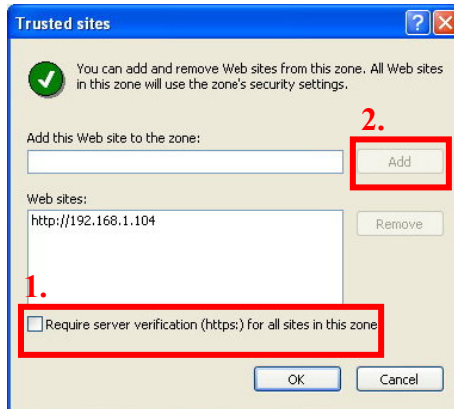
- a. Click the “Tools” → “Internet Options”



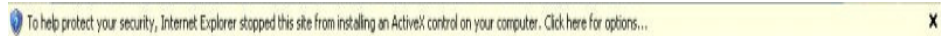
- b. Click “Security” → “Trusted sites”



- c. Click sites, then unclick the option in Step 1. Input the IP address of the recording software server in the “Add this Web site to the zone” area, then click “Add” button (Step 2) to complete the trusted sites list. Finally click “OK” to exit.



- d. After entering “Online Monitoring”, please click “information bar” when enter the first time. (The prompted information is normally located under the browser).



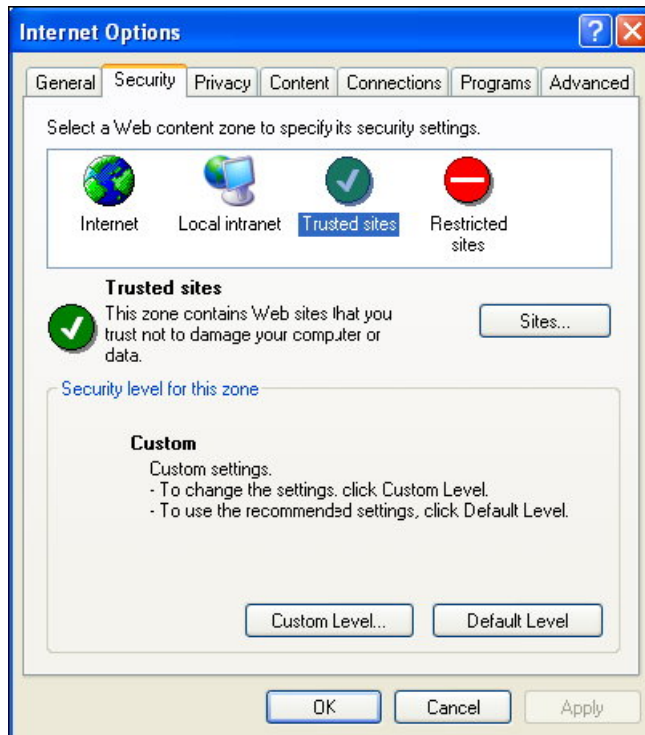
- a. Within the pop-up drop down list, please click “Install ActiveX Control...”.



- b. Click “Install” to perform the installation.



- c. If the installation does not work, please click “Tools” → “Internet Options...” → “Security” tag → “Custom Level”



Security Settings window will pop-up, and the user has to change the following options:

- Download signed ActiveX controls
 - Disable
 - Enable
 - Prompt→ Set for "Prompt"

- Download unsigned ActiveX controls
 - Disable
 - Enable
 - Prompt→ Set for "Prompt"

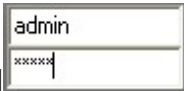
- Automatic prompting for ActiveX controls
 - Disable
 - Enable→ Set for "Enable"


- Initialize and script ActiveX controls not marked as safe
 - Disable
 - Enable
 - Prompt→ Set for "Prompt"


After complete the setup, please repeat Step d~ Step f.

- h. After the installation, the online monitoring page will show as following:



- i. Input the correct User Name and Password , and

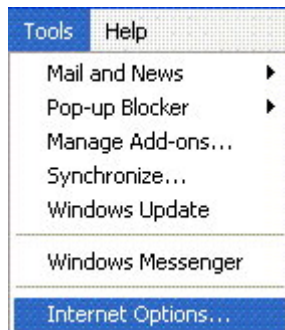
then click  to connect with the camera.

- j. During the connection, the user can adjust the image transmission quality. .

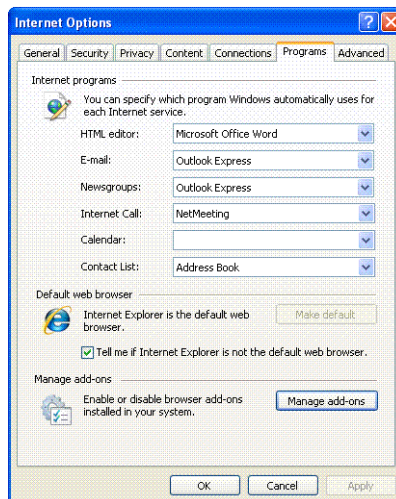
- iv. Remote Online Monitoring Control: Please refer the following steps to remove Online Monitoring software.

Internet Explorer 7 and Windows Vista :

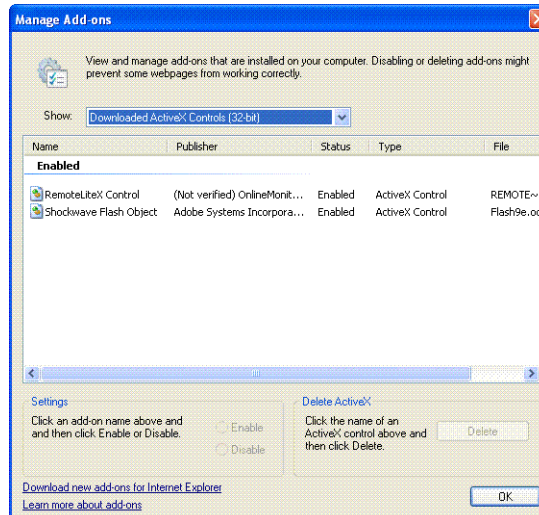
- a. Select “Tools” → “Internet Options...”



- b. Select “Programs” tag → “Manage Add_ons...”



- c. Select “Downloaded ActiveX Controls” option, and then choose “RemoteLiteX Control”, finally click “Delete” button and “OK”.

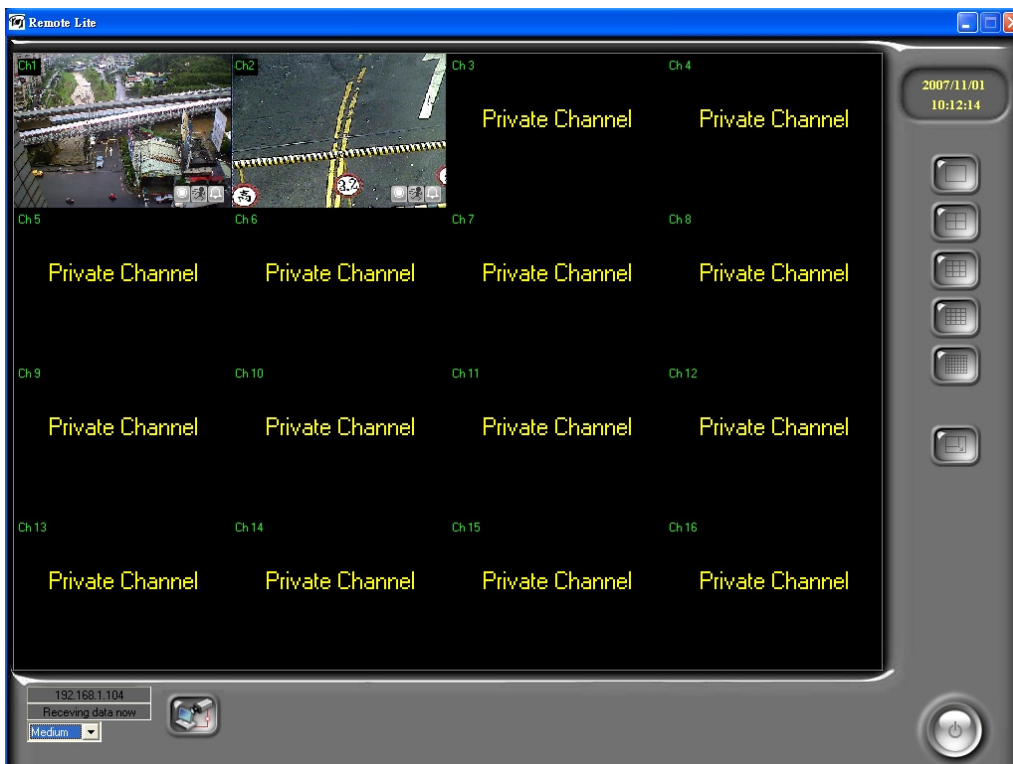


Internet Explorer 6 - Windows XP or Windows 2000 :

- a. Open the OS installation folder, such as “C:\Windows” or “C:\WINNT”.
- b. Open “Downloaded Program Files” folder.
- c. Right-click the mouse on “RemoteLiteX Control” option and select “remove” to delete Remote Online Monitoring Control.
- v. Download the remote program: When select “Download remote program” from main page, the user can download the installation file of remote program.


B. RemoteLite

RemoteLite is a video recording software which is different from IPCamera Recorder. Basically, RemoteLite is designed for live-viewing only. It is not allowed user to playback or to change any setting. The RemoteLite is not installed within the IPCamera Recorder ; instead, it is exported from the IPCamera Recorder . User can select up to four channels to export. In Windows Vista, please right-click on the RemoteLite program, then select “Run as administrator” to start the program. Please refer to following example which is based on 36CH IPCamera Recorder.




RemoteLite supports multi-channel, full screen, and network connection setup.



Click  to get the connection. Moreover, user can select different transmission speed (Fast, Medium and slow). The speed of server will be the same as RemoteLite.

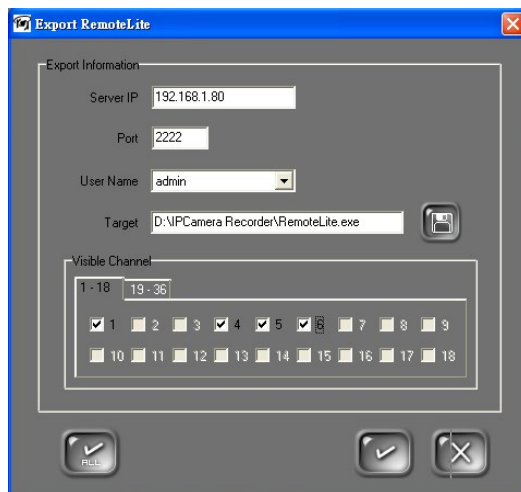
Export RemoteLite :





- i. Get into administration page then click .
- ii. Within "RemoteLite Application"



, please click  to open

RemoteLite setup page. Please refer to following figure. **Currently, there are up to 4 channels can be exported in RemoteLite program.**



- a. Sever IP : The network location of the server.
- b. Port : The access port of the server.
- c. User Name : The available names are preset by main program. User should have the authority to gain the access of the main program using RemoteLite.
- d. Visible Channel : User can select each channel intending to export (**Up to 04 CHs**). For instance, if user "only" selects 1 and 2 channels to export, then other channels will be the private channels. The user can also click  to select all channels (**Up to 04 CHs**). In contrast, click  button again to cancel all selected channels.
- e. Note : After complete above setting, click  to save the exported program setting. The administrator can export different RemoteLites to match different users' demand. Finally, do not forget to click  to export the RemoteLite.

X. Others

A. Schedule record setting

IPCamera Recorder supports different recording mode for different channel.



- i. Get into administration page. Click
- ii. Select channel to set up the schedule. Select "Schedule" tag.

Start Date	Time	End Date	Time	Mode
2007/9/6	11	2007/9/6	23	Motion

- iii. IPCamera Recorder supports 5 recording modes which is including general (red), motion detection (yellow), alarm detection (blue), motion with alarm detection (green), and no record (white).
- iv. Use mouse to select time then choose what kind of recording mode to use.



- v. Click

- vi. Besides daily schedule recording, IPCamera Recorder supports specific



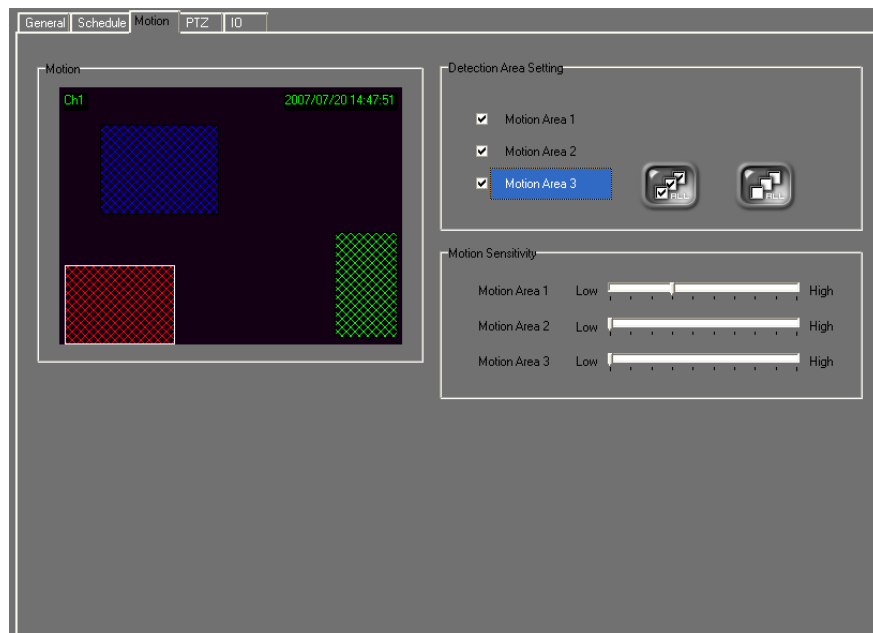
time recording. Determining start/end time then click to add to schedule. **Notice: Specific time recording has higher priority than daily schedule.**

B. Motion Detection

Each channel can set up 3 areas to detect to motion.



- i. Get into administration page. Click
- ii. Select channel to set up the motion, Select “Motion” tag.



- iii. Detection Area Setting: Click area, the use mouse to draw the area to detect motion.
- iv. Motion Sensitivity: adjust the sensitivity for each channel.

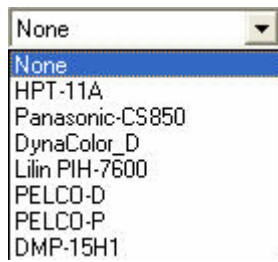
C. PTZ set up and control

IPCamera Recorder series supports remote PTZ control.



- i. Get into administration page. Click

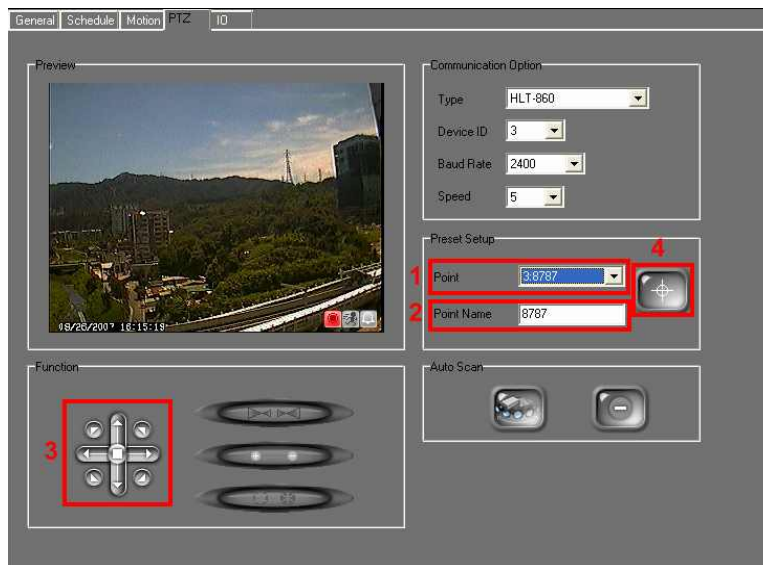
- ii. Select the channel which supports PTZ, Select "PTZ" tag.



- iii. IPCamera Recorder series supports different PTZ protocols.
- iv. Make sure choosing the right protocol, ID, baud rate.




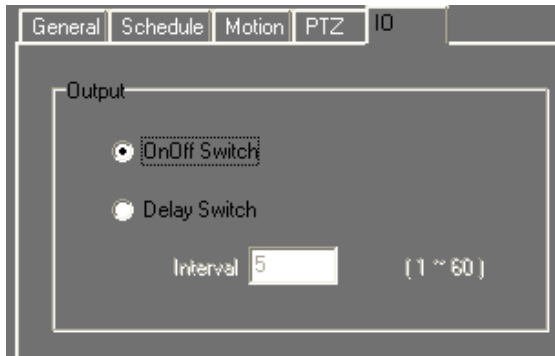
- v. Detecting point preset setup: Please refer to following figure.



- vi. When finish the PTZ setup, use the control panel to control the PTZ.


D. I/O setup

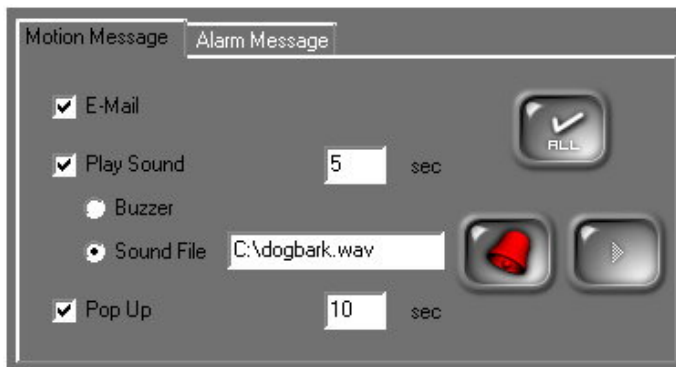
- i. Get into administration page. Click 
- ii. Select the channel which supports I/O, Select "IO" tag.




- iii. IPCamera Recorder series supports 2 types of I/O. Users can determine delay time interval from 1 to 60 seconds.
- iv. In the live-viewing, I/O interface may have different controller depending on each channel or remote device.

E. Motion/ Alarm Event setup

- i. Get into administration page. Click 
- ii. Select the channel which supports I/O, Select "IO" tag.



- iii. The response actions are shown in the following when motion and alarm are triggered.
 - a. E-Mail: Send the E-Mail. Please click  option first,



and then click

- b. Play Sound: Set up the time of play sound. (NOTE: 0 sec is represented the sound is continuing until the user clicks the triggered channel.) The user can select the sound from the buzzer



or the specific sound file by clicking

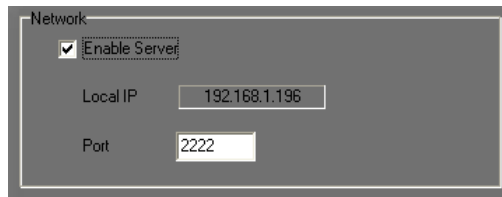


after complete the sound file setting, please click

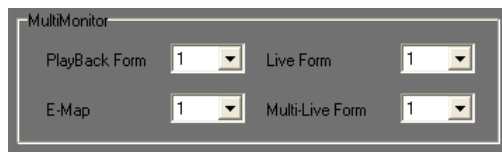
to test the selected sound file.

- c. Pop Up: If the selected channel is triggered, the program will pop-up and display the triggered channel in the full screen mode. Furthermore, the user can select the pop up time as well. (NOTE: 0 sec is represented the full screen of the triggered channel is continuing displayed and will not back to the split screen mode.)

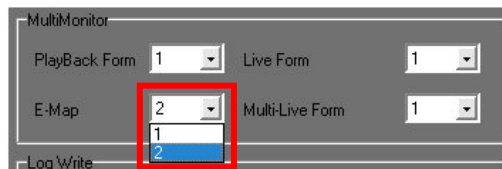
F. System



- i. Network setting : Click “ Enable Server” to enable remote device control. The port needed to be adjusted in case of conflict.



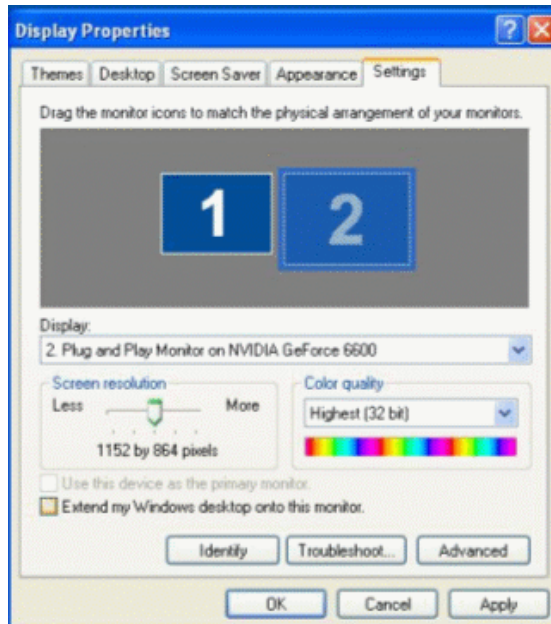
- ii. Multi-Monitor setting : Under the PC connects Multi-Monitors (it refers to exceed two monitors), the user can select what is displayed on the connected monitors. This function can be worked while the PC installs **graphic card which is supported Multi-Monitors*** and connects more than one monitor. Moreover, IPCamera Recorder series will detect the quantity of connecting monitors.



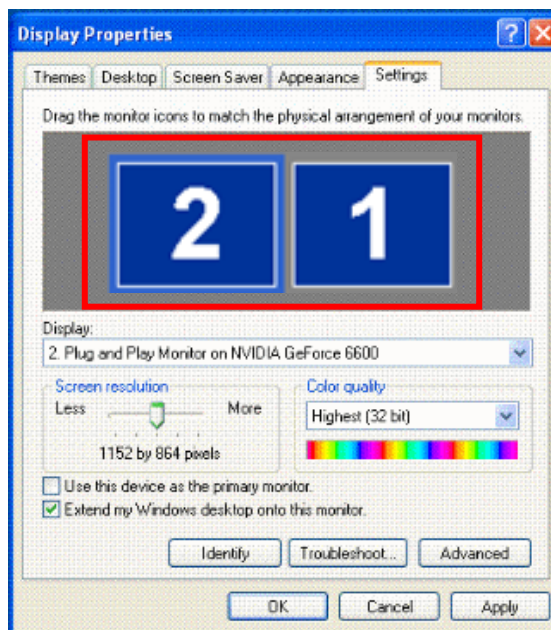
(* Normally, the graphic cards which is supported to Multi-Monitors are D-SUB + DVI interface and has to connect one D-SUB monitor and one DVI monitor. Moreover, some graphic cards will have DVI to D-SUB connector. Through the connector, the graphic card can support D-SUB + D-SUB interface and can connect two D-SUB monitors such as ASUS A9200SE. Nowadays, the higher level graphic card can support DVI + DVI interface, and has to connect two DVI monitors.)

It could be performed the following setting after connected multi-monitors and reboot the PC.


- a. Click the disable monitor number (i.e. No.2 in the following image.) and select “Extent my Windows desktop onto this monitor” option.

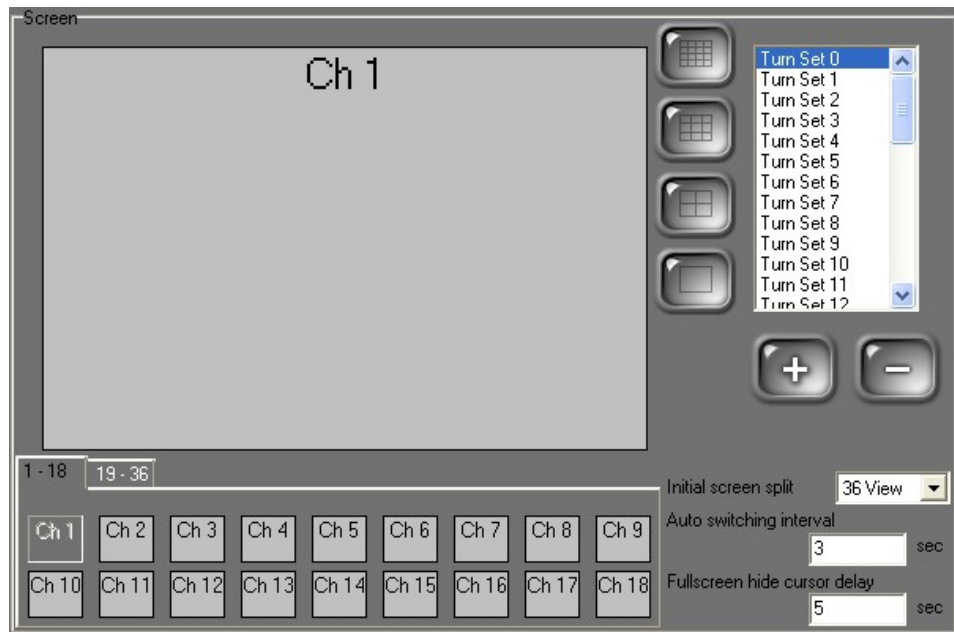


b. Drag and drop the monitor icon to correspond the actual monitor position.



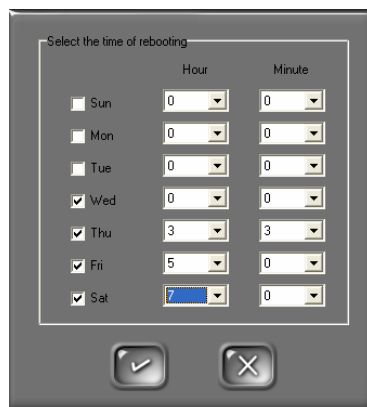
- iii. Log Write : Please select which log file to save.
- iv. Screen setup : Users can customize live-viewing by choosing different channels to swap. Please refer to following example,
 - a. 36CH version: For each split window, user can setup to 16CH, 9CH, 4CH and 1CH swap mode. In 36CH, there are up to 40 combinations.

- v. Please click  to enter screen setup page (based on 36CH version).



- vi. Keyboard Lock : Check Keyboard lock[Windows key enable/disable] to enable keyboard lock. By enabling this function, the application hotkey will be disabled (i.e. Ctrl + ESC 、 Alt + Tab 、 WIN and Alt+F4) to avoid illegal usage.

- vii. Windows reboot: Click  to set up the time to reboot Windows automatically. It will re-start the IPCamera Recorder automatically.



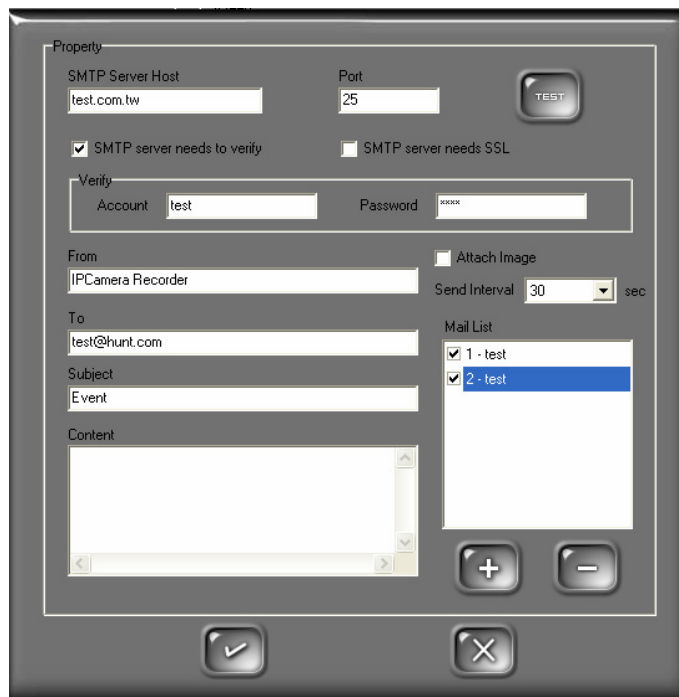
- viii. Program auto-run: Auto run the program on windows startup To run the program whenever the PC is reboot.

- ix. E-mail alert: When the motion is triggered, IPCamera Recorder sends the e-mail to some specific account.


d. Get into administration page. Click .

e. Check Enable E-mail.

f. Click  to get into setup page.





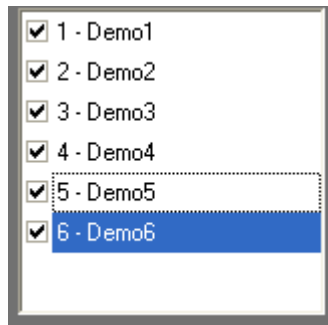
g. E-MAIL setup page: To enable e-mail service, please fill in the name of SMTP server. To verify the user, please check SMTP server needs to verify, and fill in the user account and password.

Click  to test the e-mail service.


- h. The default value of "From" is IPCameraRecorder.
- i. Please fill in the e-mail destination address such as DemoTest@test.com.
- j. "Subject" and "Content" column: The title and the reminder of a triggered event.

- k. Check Attach Image to attach the triggered event and image to the pre-set e-mail address.

- l. In the e-mail setup page, click  to add more e-mail addresses to the sending list; or click  to delete from the sending list.



Attention: The E-mail server will not send the e-mail and the attachment if the check box of the sending list is unchecked.

- x. Auto Logout : Check Auto Logout , the system will automatically logout within the pre-set time  sec , if there is no keyboard or mouse event detected.

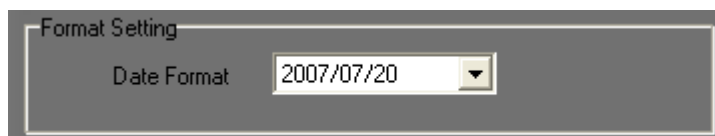
- xi. HDD setup:

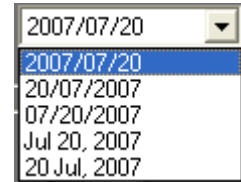
- a. IPCamera Recorder series will overwrite the old data when the

HDD is full. Click  to enable/ disable this function.

- b. Overwrite When Diskfull The default configuration of this function is enable.


- xii. Date Format:






- a. There are 5 different date formats available
 - b. Please save the changes before exiting.
- xiii. Product Information:

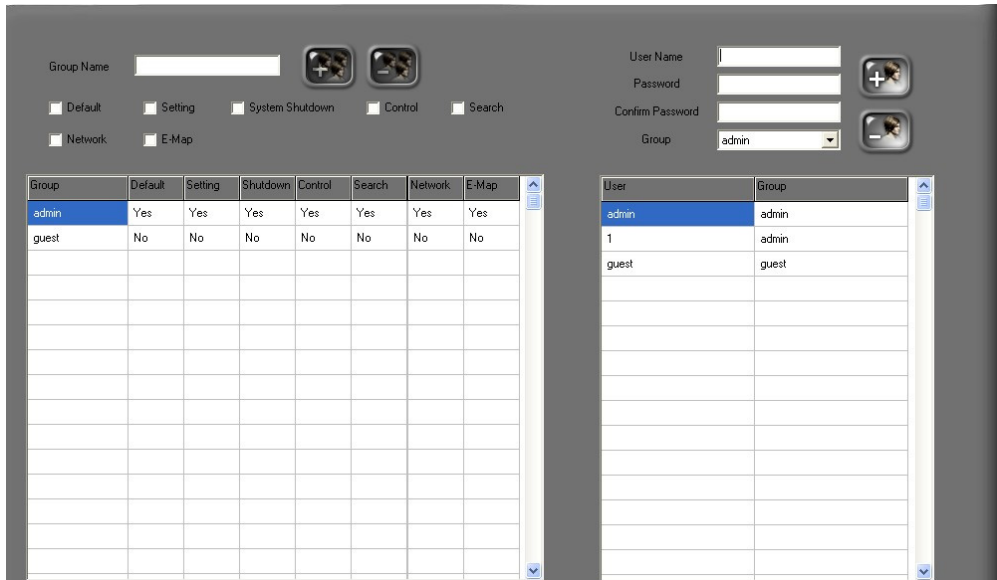


- a. Click  to show product information.

G. Password Setup

IPCamera Recorder supports simple security control.

- i. Click  to get into password setup page.

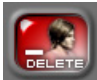


Group	Default	Setting	Shutdown	Control	Search	Network	E-Map
admin	Yes	Yes	Yes	Yes	Yes	Yes	Yes
guest	No	No	No	No	No	No	No

User	Group
admin	admin
1	admin
guest	guest

- ii. On the right side of the password setup page, please fill in the user


name, password and select the group. Click  to add new user

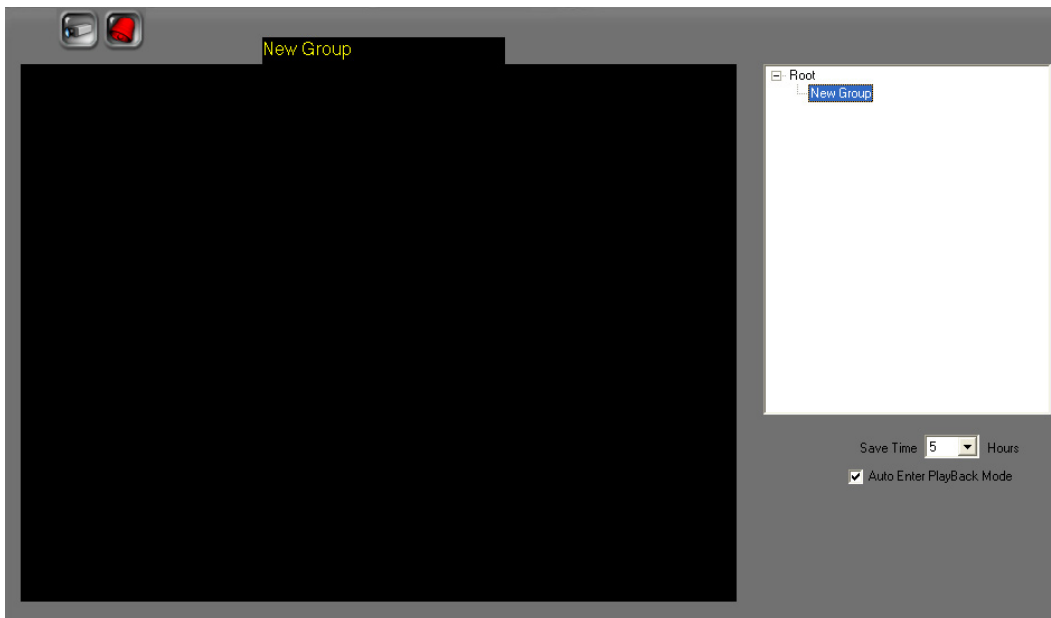
and click  to delete.

- iii. After configuration, please leave the password setup page. In the

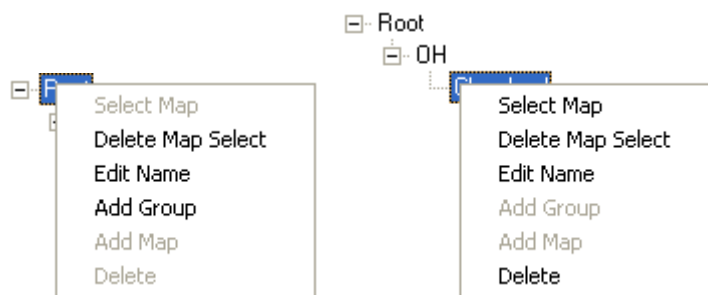
live-viewing page please click  to login/logout.

H. E-map setting

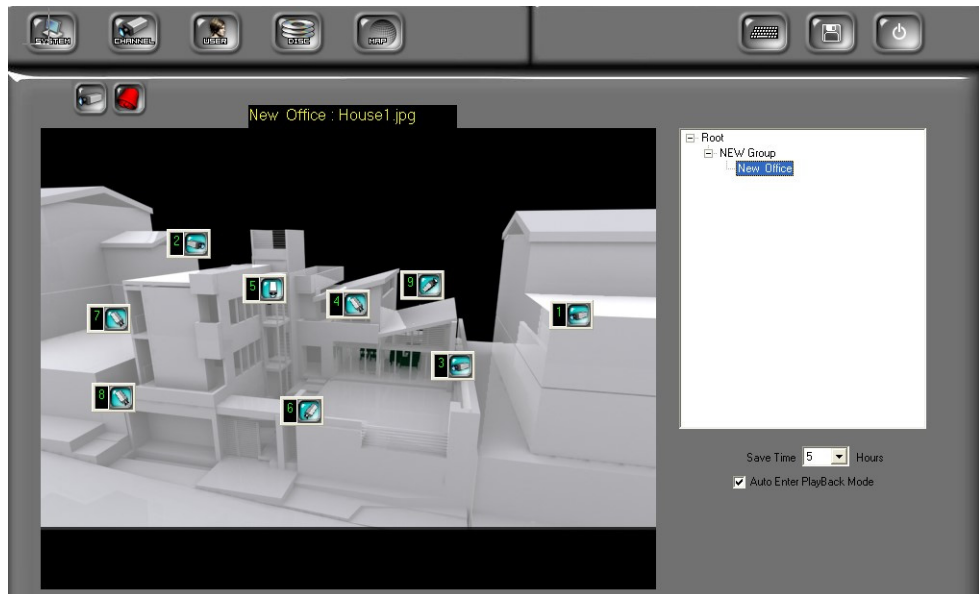
Get into administration page. Click  to set up the E-map.

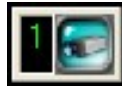


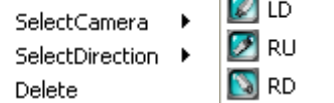
- i. Right-click the mouse to set up and add the map.



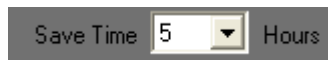
- ii. Drag and drop the icon () to put the camera & sensor on the map.



Please right-click  to setup the camera.



iii. Event save time setting : On the right side of the setting page



, please determine recording time of the motion or alarm events. **There are up to 5000 events can be reserved. The previous records will be over-write if exceeding 5000 records.**

iv. Auto Enter Playback Mode : By enabling this function



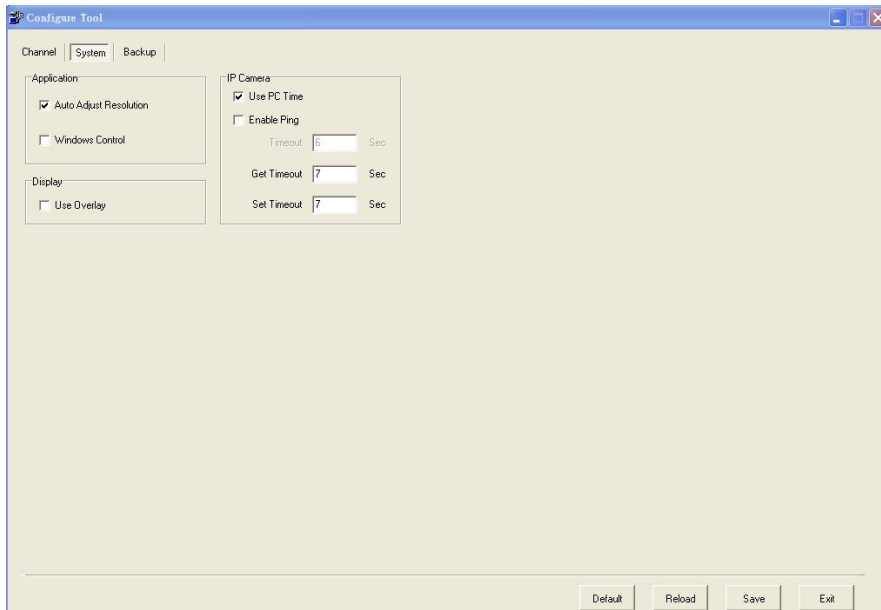
, when the motion and the alarm events are triggered, the system will automatically playback the event (E-MAP mode only).

v. Click  to save the configuration.

XI. Configure Tool

A. Monitor resolution (Default: On)

The program resolution of IPCamera Recorder is 1024 x 768. It will change the monitor resolution to 1024x768 if the monitor resolution is not 1024x768.



- i 、 Run Configure tool
- ii 、 “System” tab
- iii 、 Select “Auto Adjust Resolution” to adjust the resolution automatically.

B. Enable/ Disable “Window Control”

(default: off)

This function is only available for resolution larger than 1024 x 768 monitor. This function can not combine with “Auto Adjust Resolution”. When this function is enabled, if monitor resolution is over 1024 x 768, user is allowed to drag the window to proper position.

C. Enable/ Disable “PC Time”

(default: on)

By enabling this function, system will record the video transferring time based on the PC.

Note: By disabling this function, the recording time of the remote devices may differ from the PC time.

D. Enable/ Disable “Ping”

(default: off)

Some network device will disable the “ping” function. To connect IP camera/ video server which are protected by the firewall, please disable this function to make sure it can connect correctly.

E. Enable/ Disable “Overlay”

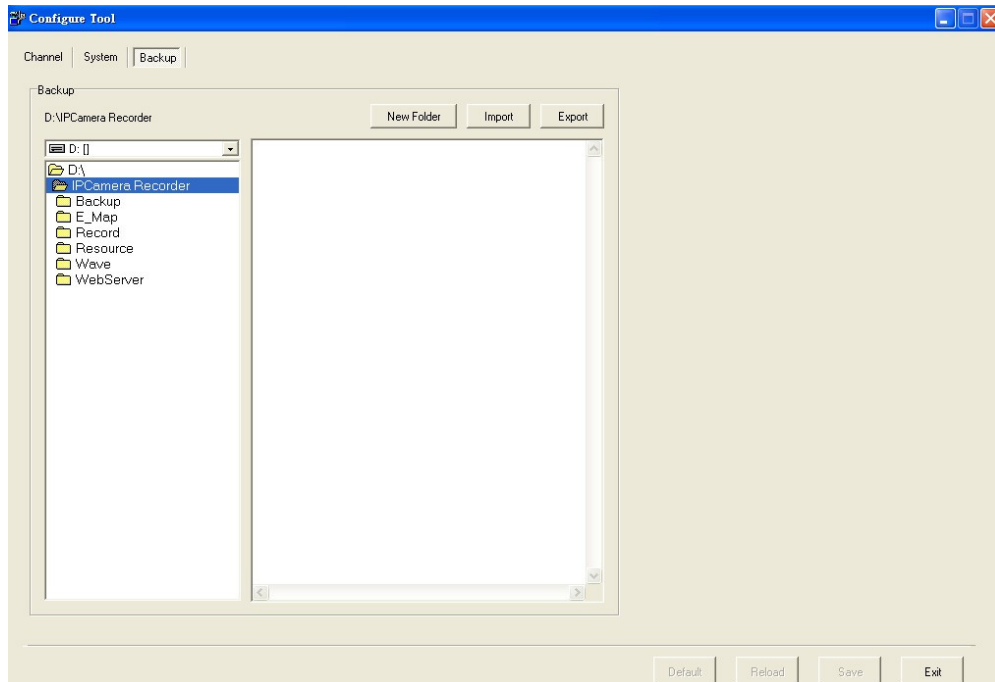
(default: on)

Disable the overlay function if the graphic cards don't support this function.

Note: Enabling overlay function can reduce CPU loading and enhance PC performance.

F. Backup configurations

Use Configure tool to back up all the configurations. It will be very useful to maintain the software using these configurations.



- i 、 Select the back up path. Click “Export”.
- ii 、 To import the configurations into IPCamera Recorder, select the backup folder, click “Import”.

XII. Product Specifications

Video Monitoring	
Channel	36
Real-Time Monitoring Mode	1, 4, 9, 16, 36
Full Screen	Yes
Supported Hardware Device	Video Server IP Camera DVR PT AXIS: 205, 206, 207, 210, 211A, 213, 214, 221, 225, 231D, 232D, 241 (4Ch Server), 2100, 2110, 2120, 2130, 2420
E-map	Yes
Multi-Monitor	Yes
Attached Channel Type	Yes
Channel Setup	
Recording Mode	Schedule, Motion, Alarm, Motion & Alarm,
	Manual
Record Resolutions	SXGA, D1, VGA, CIF, QCIF
Video Quality	best, high, standard, medium, low
Show Title and Time	Yes
Recording Audio	Yes
Monition Detection	Yes
PTZ Control	Yes, via PTZ control panel

DVR Control	Yes, via DVR control panel
IO Control	Yes, can activate preset alarm devices such as siren or alarm, It supports on&off switch mode and delay switch mode, up to 4 I/O Control
Digital Zoom	Yes, via digital zoom control panel
Two-way Audio	Yes
Advanced Setup	Yes. Setup Tag, Time/Date and Status location of shown channel and the font setting
System Setup	
Multi-Screen	Yes, Live-viewing, Multi-Live Window, Playback Window, E-MAP
Log Management	Yes, system log, alarm event, motion event, user log.
Date Format	Yes, 5 Data formats setting
Product Information	Yes
Display Setup	Yes 36CH:1,4,9 and 16CH split window setup(Up to 40 combination)
Keyboard Lock	Yes
Auto Reboot by Schedule	Yes
Auto Startup	Yes
E-mail	Yes, motion and alarm triggered
Auto Logout	Yes
HDD Overwrite	Yes
Alarm Sound	Yes
Video Playback	
Video Search	Yes, time search
Video Export	JPG, AVI
Print Image	Yes
Video Forward/ Backward	1x, 2x, 4x, 8x, 16x, 32x(depending on hardware or channel)
Video Simultaneous Playback	Yes, up to 4 channels
Digital Zoom	Yes, by digital panel control
Event Warning	
On Screen Display	Yes
E-mail Warning	Yes, with event attachment

Alarm Output	when motion detected, pre-selected alarm sound will be playback and live screen will enter full screen mode
Security	
Security Setup	Yes, user account, user password and group management
Remote Control	
Web Server	Remote Connection via Web Browser
Remote Program Server	Remote Connection via RemoteLite Program
Configure Tool	
Hardware Auto Search	Yes
Auto Resolution Adjustment	Yes, Best resolution is 1024 x 768
Window Control	Yes, Resolution must be larger 1024 x 768
Enable Ping Function	Yes
Time Synchronization	Yes, system will record the video transferring time based on the PC.
Use Overlay	Yes
Backup Import/ Export	Yes

XIII. GRAPHIC CARD Test Table

The following list presents the graphic cards which have been tested with IPCamera Recorder series.

OS		
Windows 2000	ATI	RADEON 7500
	NVIDIA	GEFORCE 6200
Windows XP	ATI	RADEON 9200, RADEON 9550, RADEON XPRESS 200, RADEON HD 3650
	NVIDIA	GEFORCE 6200, GEFORCE 6600, GEFORCE 7100, GEFORCE 7300, GEFORCE 8500
Windows Vista	ATI	RADEON XPRESS 200M, RADEON HD 2400 PRO
	NVIDIA	GEFORCE 8500
	Intel	G33

NOTE 1: All the graphic cards which are shown in above table have to update their driver to the latest version. Please go to ATI, NVIDIA or Intel official website to update the driver.

NOTE 2: By using Windows Vista, due to Intel G33 Driver (Version: 7.14.10.1461) from its OEM have not supported Vista DirectX 10 yet, it cannot display the image within Overlay mode while operating Dual-Monitor. Therefore, this caused problem still wait for the solution from its OEM.