
CMS USER MANUAL

Content

1、 System Summarize	4
2、 System Requirement	4
3、 Software install and uninstall.....	4
3.1 Software installation	4
3.2 Software uninstall	6
4、 Software instruction	7
4.1 Software Login	7
5、 System Configuration.....	9
5.1 Device Status	9
5.2 Region Management	10
5.2.1 Region setup.....	10
5.2.2 Dropdown setup	11
5.3 user management.....	12
5.3.1 user group management.....	12
5.3.2 user management.....	13
5.3.3 revise password.....	14
5.4 Storage management.....	15
5.4.1 Storage server	15
5.4.2 Storage program.....	16
5.4.3 Alarm storage	17
5.5 Device Management	19
5.5.1 Device Management.....	19
5.5.2 Channel Group.....	21
5.5.3 Sequence Setting.....	21
5.5.4 Upgrade Management.....	22
5.6 Alarm Management	23
5.6.1 Alarm Input	23
5.6.2 Motion Detection.....	25
5.7 E-Map Function	25
5.8 Log Management.....	27
5.8.1 Alarm Log.....	27
5.8.2 System Log.....	28
5.9 System Management.....	28
5.9.1 System Param.....	28
5.9.2 Backup/Restore.....	29
5.9.3 Version Info	30
5.10 Real-Time Monitoring.....	31
5.10.1 Screen Switch.....	32
5.10.2 Device list tree.....	32
5.10.3 Parameter Setting.....	34
5.10.4 Video Playback.....	35
5.10.5 System Menu.....	35

5.11 Historical Playback.....	38
5.11.1 Screen Switch.....	39
5.11.2 Function Button.....	39
5.11.3 Playback Control.....	40
5.11.4 AVI file conversion Function.....	40
5.12 Instant Alarm	41
6、 System Function Overview.....	42
6.1 Central Storage.....	42
6.2 Cascading.....	43

1、 System Summarize

CMS is composed by CMS Server and Client. CMS Server supports. Resource, Device centralized management and Stream Media Server, Alarm Management functions.

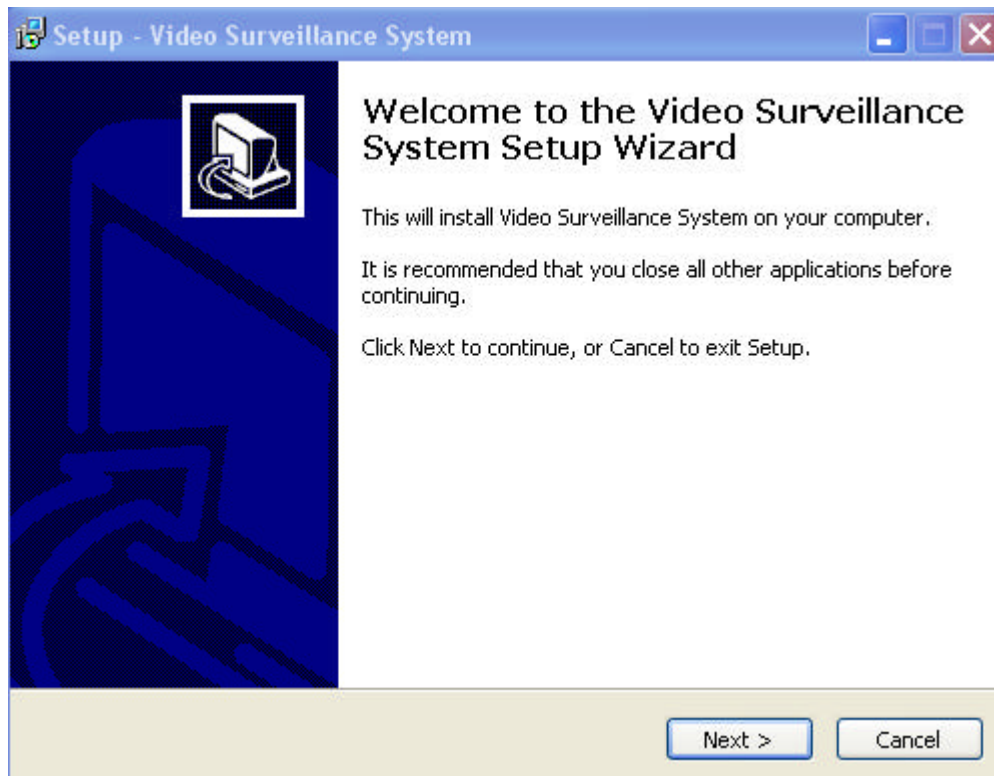
2、 System Requirement

Server			
Item		Minimum Configuration	Recommended Configuration
Soft ware	OS	Window server 2003 standard Edition Service Pack 2	Window server 2003 standard Edition Service Pack 2
	Database	Mysql5.0	More than Mysql5.0
Hard ware	CPU	Intel(R) Pentium(R) Dual CPU E2180 2.00GHZ	Intel(R) Pentium(R) Dual CPU E2180 2.80GHZ
	RAM	1G	2G or above
	HDD	80G	160G
	NIC	10/100M	10/100M
	Others	N/A	
	Description	We suggest user to install the CPU and RAM higher than recommended.	

3、 Software install and uninstall

3.1 Software installation

Please install the package, double-click "PSService.exe" , and then install "PCTerminal.exe". Run the wizard.



click the“ Next” button, To next operation.(As above)

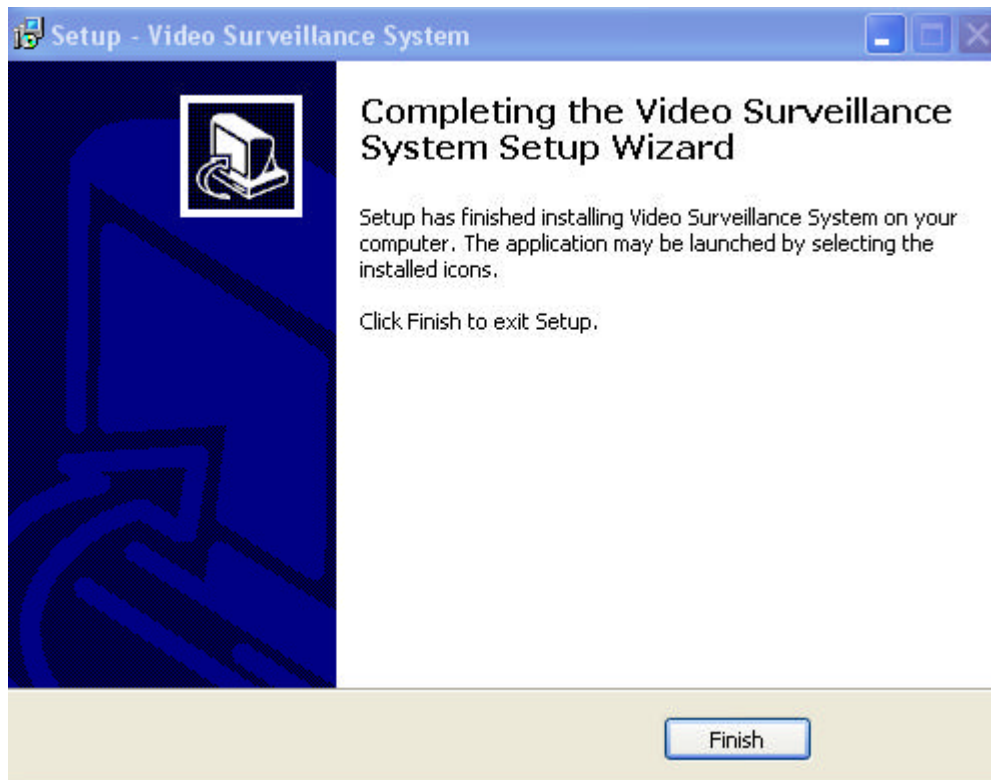
programme default installation under the program File of System disk, Or click the navigation button to select the installation directory;

Set the HTTP port and Media Server port(Default are 80 and 8000).

Click “Install” to start installation;

Install finished, click finish to quit the installation.

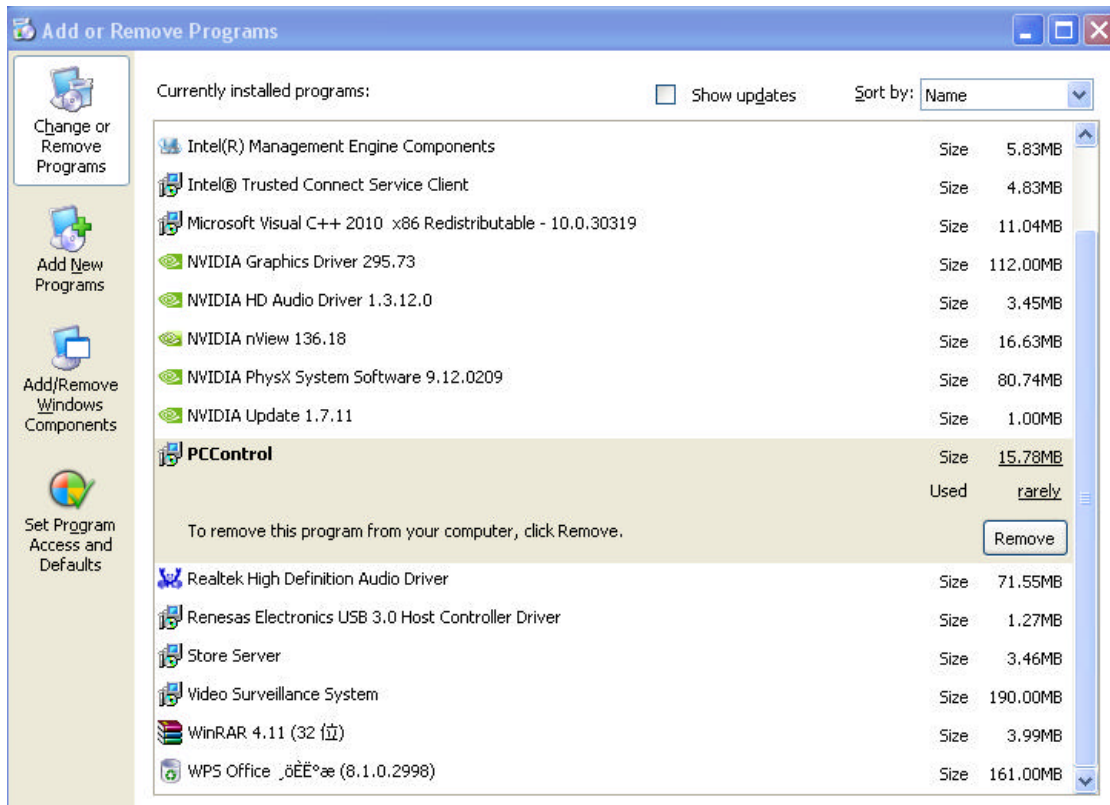
(As below)



3.2 Software uninstall

Click start, Point to Settings, Click Control Panel, Click add programme/Delete programme,

Select CMS, Click Delete to finish uninstall.(As below)



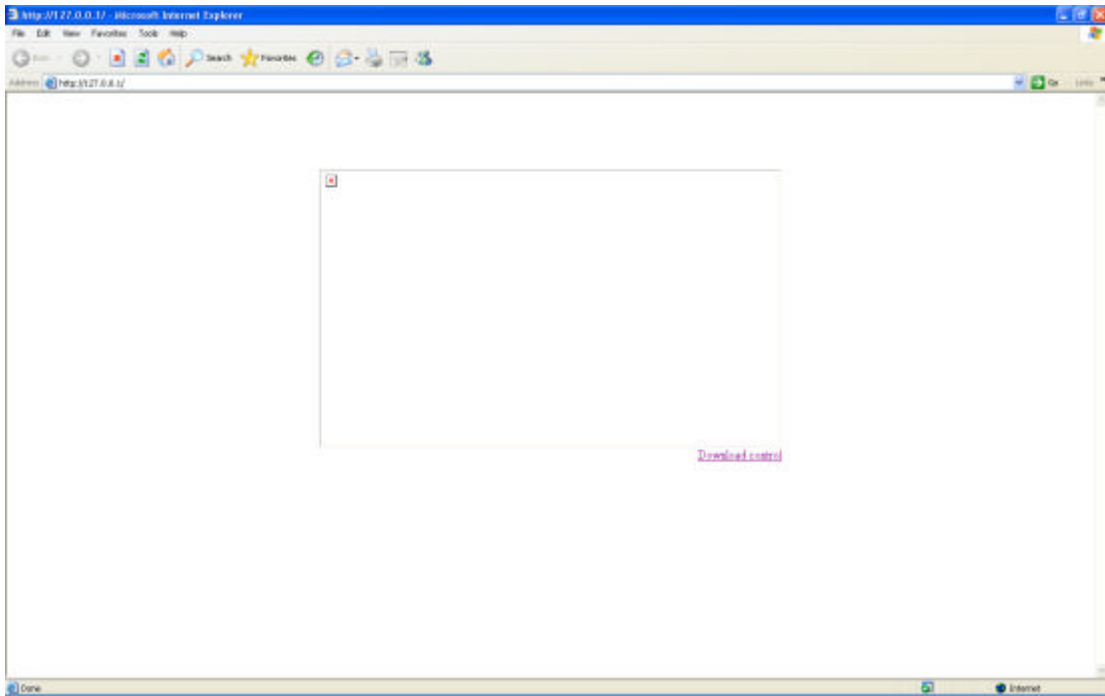
4、 Software instruction

4.1 Software Login

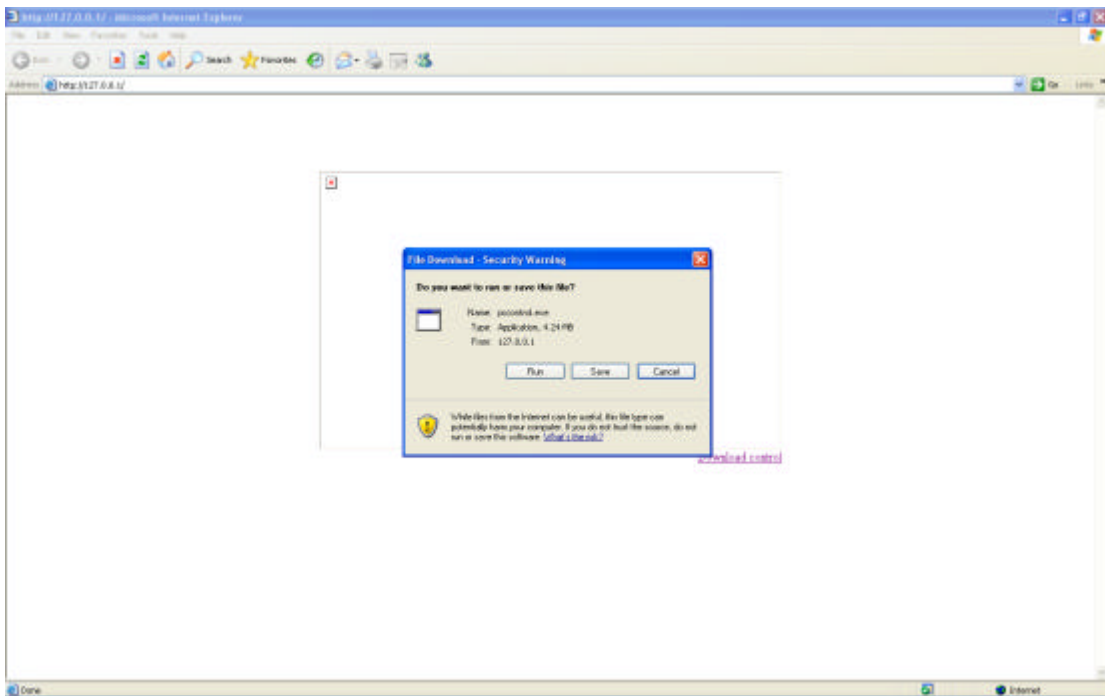
Open the IE Browser, Type the correct URL address in the Address bar.(Such as <http://xxx.xxx.xxx.xxx>) And “xxx.xxx.xxx.xxx” is the server ip address, Click Enter to eject a login interface.

First login, The System give the tip automatically to download the control for PCControl.exe

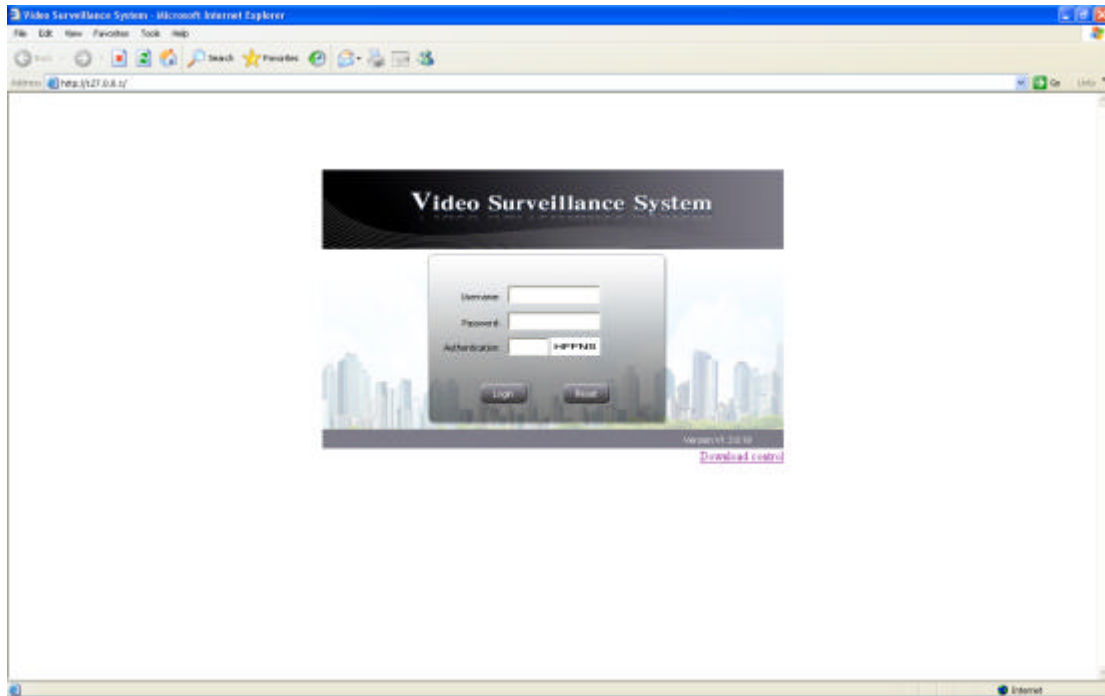
(As below)



Click the red word for download control (As above)



Click Run or Save, Following the steps to finish the installation successfully, Refresh the link,
First login interface (as below)



Username: Login username;

Password: Login password;

Verify Code: Input the same Verify code which display on the IE , Such as above
RTRRB.

Reset: Click Reset button to clear input and select bars.

Note: Default User is admin, password: 123456. After Login, Please change the
password in time. The super admin have the all permission.

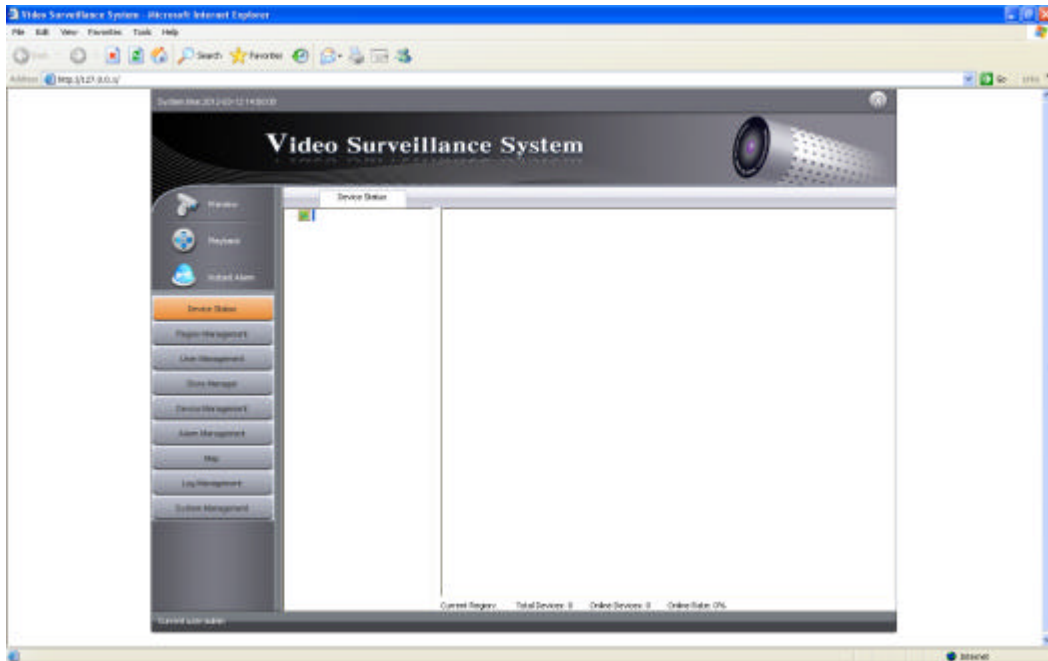
5、 System Configuration

Hint:

1. There are several modules in the CMS, user need to set separately;
2. All the settings need to save to take effect.

5.1 Device Status

After enter the CMS, it will show the [Device Status] (As below)



Icon introduction:

Indicate working status for different equipments

Grey indicates device offline.

Green indicates device online.

Green lock icon indicates device is online and alarm setting.

Notes:

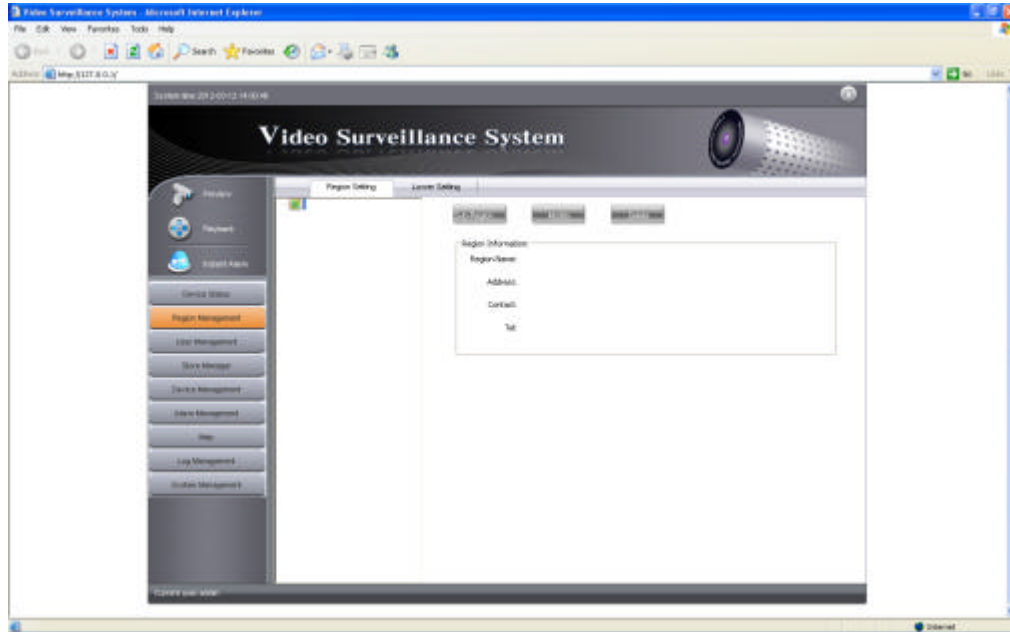
1. At this page it will show current region, Equipment Sum, Online equipment sum, On line Rate.
- 2 Put the Mouse on the green Icon, It will show the equipment zone, equipment name, equipment address, video channels, Equipment version, Disk sum, Disk total space, Free Disk space.
3. Put the mouse on the Grey Icon, It will show the equipment zone, Equipment Name, Equipment name, Equipment address, Video Channels.

5.2 Region Management

Region Management include submenu: Region Setting, Dropdown setting.

5.2.1 Region setup

Click the Regional Management -> Modify to enter the regional settings page (see below)



Device List: Device list display the added area

Add sub-region: Select the region from the region list, click Add to add the sub-region. Input the region information which include the region name(Should be offered), Address, contact, Telephone. Then save it. Then it will show under the device list which be selected.

Delete Region: Click to delete selected region.

Modify Region: Click to modify region information. Select region in the device list, click” Modify region” button, showing a new page need to be modified. It will successful modification after save it.

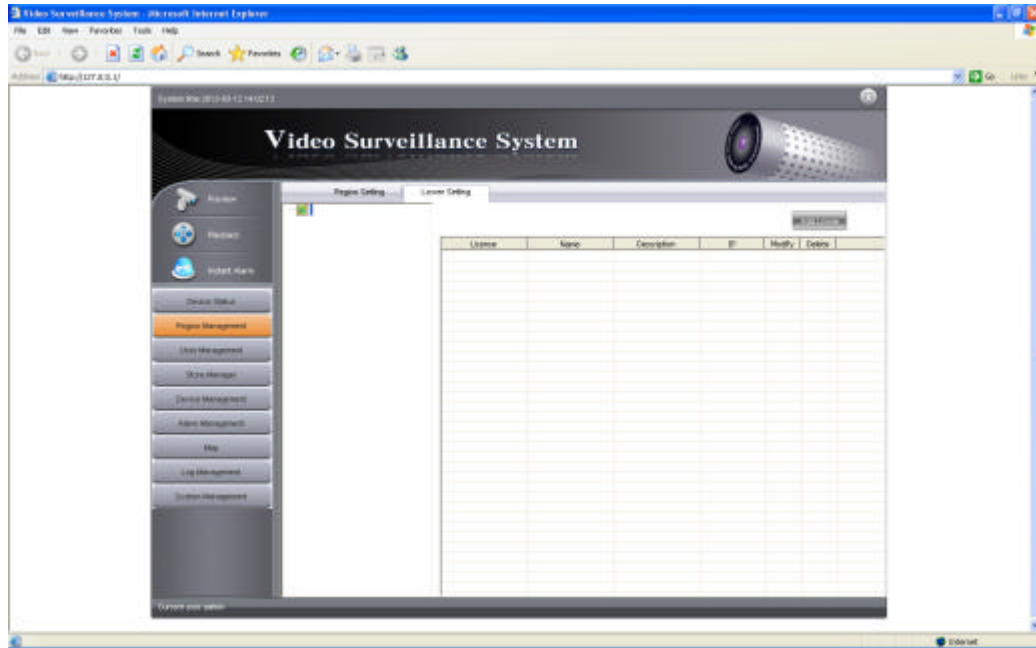
Hint:

A,If you delete region it will delete all sub-region and also devices.

B,Can not delete default region, only can be modified.

5.2.2 Dropdown setup

Click the Regional Management -> Modify to enter the dropdown setup page (see below)



New add inferiority: this button means add the inferiority area of some area. Choose some area in the area list, then click "add new inferiority" button to appear the input page of "add new inferiority" and enter the corresponding information in the input page, including inferiority name, description, address, contact person, contact tel, register code(name must be filled), then click "sure" and the new added area information will display on the right frame in the area list.

Notes: 1. Register code is existed automatically. Send the register code to the inferiority, and the supervisor can supervise the inferiority after the inferiority sets successfully in the functional module.

2. When add inferiority successfully, you can revise and delete inferiority information

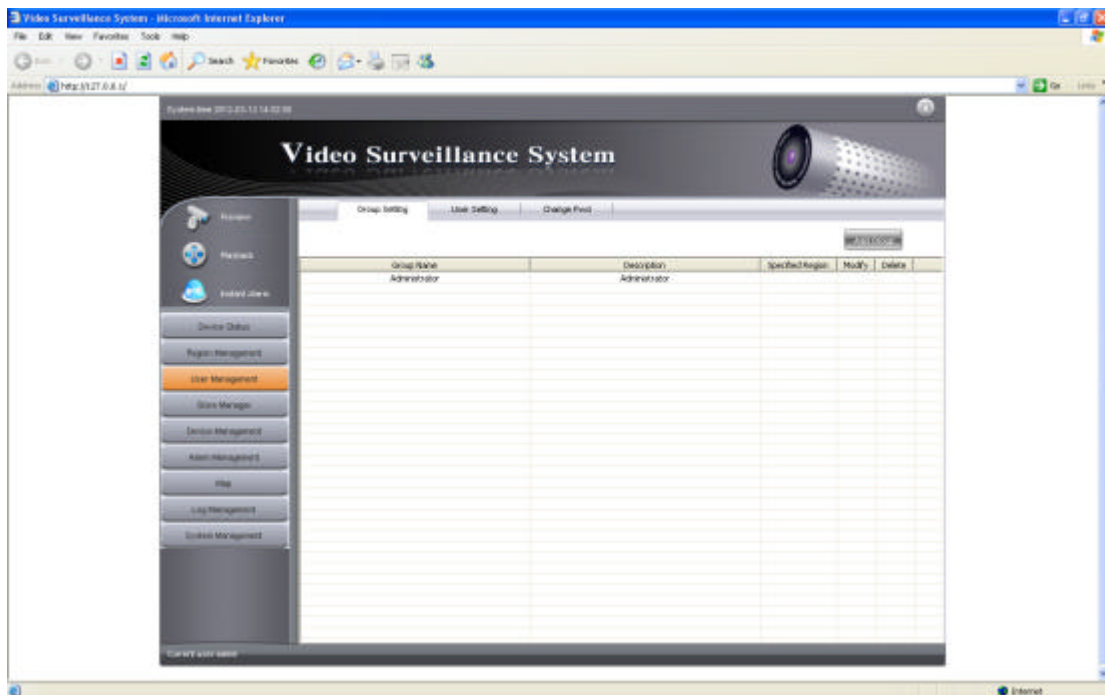
5.3 user management

User management including submenu: group management, user management, revise password.

5.3.1 user group management

Click [user management-user group management]in the functional menu to enter the user

group interface(see below)



Interface instruction: you can add, revise and delete user group in this interface

New add user group: click "new add user group" button to appear the input page, enter the corresponding information including user group name, user group description, belonged area, authority, then click "sure" to display the new add group in the user group menu

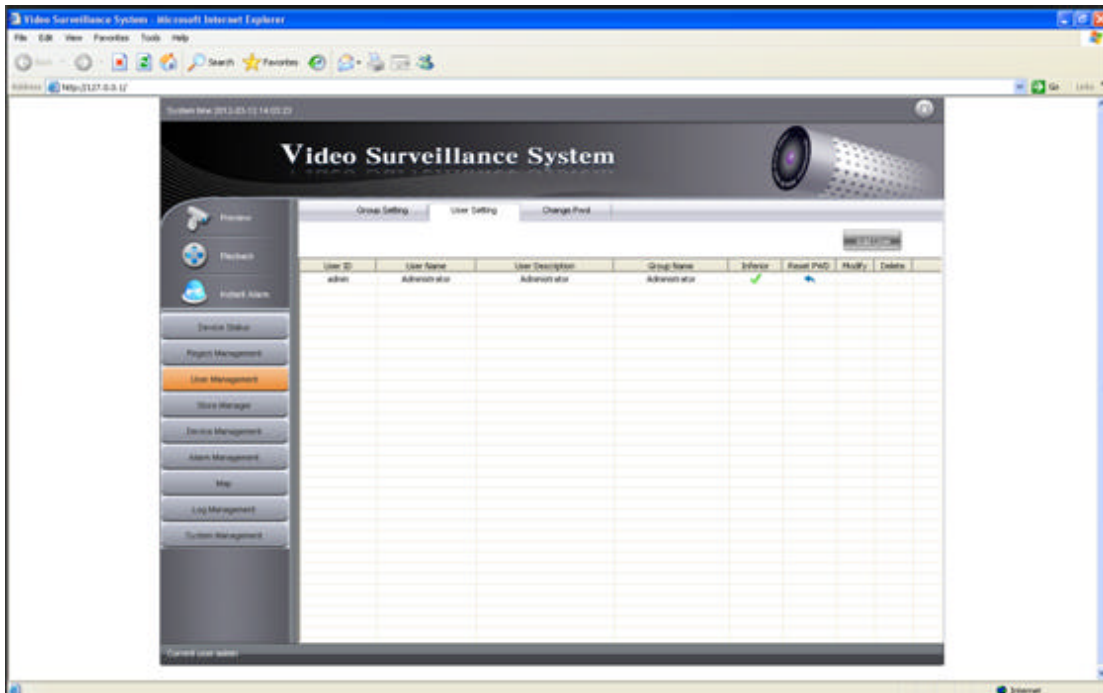
Revise role: click the revise icon of some user group in the user group list to enter the revise interface and revise the corresponding information. Then click "sure" to complete the operation

Delete role: click the delete icon of some user group in the user group list to appear the delete tips, choose "yes" to delete, choose "no" means not to delete;

Notes: default user group can not be deleted

5.3.2 user management

Click the [user management--user management] in the functional menu to enter the user management interface (see below)



New add user: click this button to open the input page of new add user, then enter the corresponding information, including user ID, user name, user description, user group, inferiority management option frame(user ID, user name, user description, user group have to be filled)

Reset password: click reset password button in the user list to appear the reset tips, click "yes" to reset the user password to "123456"

Revise: click revise button in the user list and revise the corresponding information in the input page, then click "sure" to complete the operation.

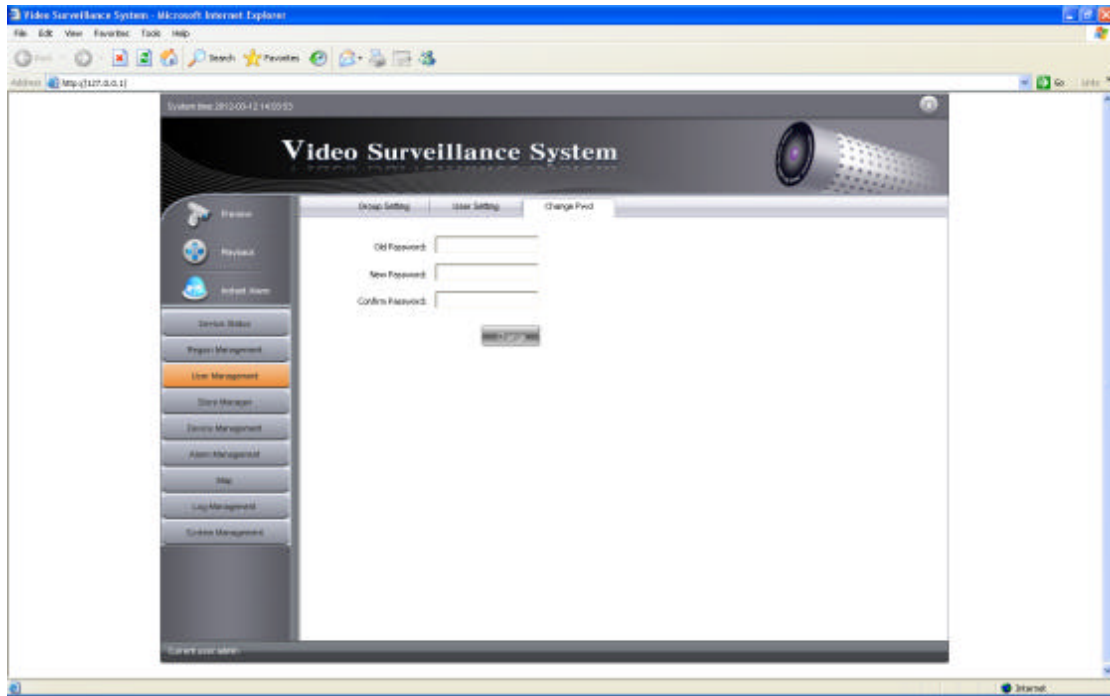
Delete: click the button in the user list to appear the delete tips, choose "yes" to delete, choose "no" means not to delete.

Notes: 1. User id must be number and character mixed

2. Default user can not be deleted

5.3.3 revise password

Click [user management-revise password] in the functional menu to enter the revise password interface(see below)



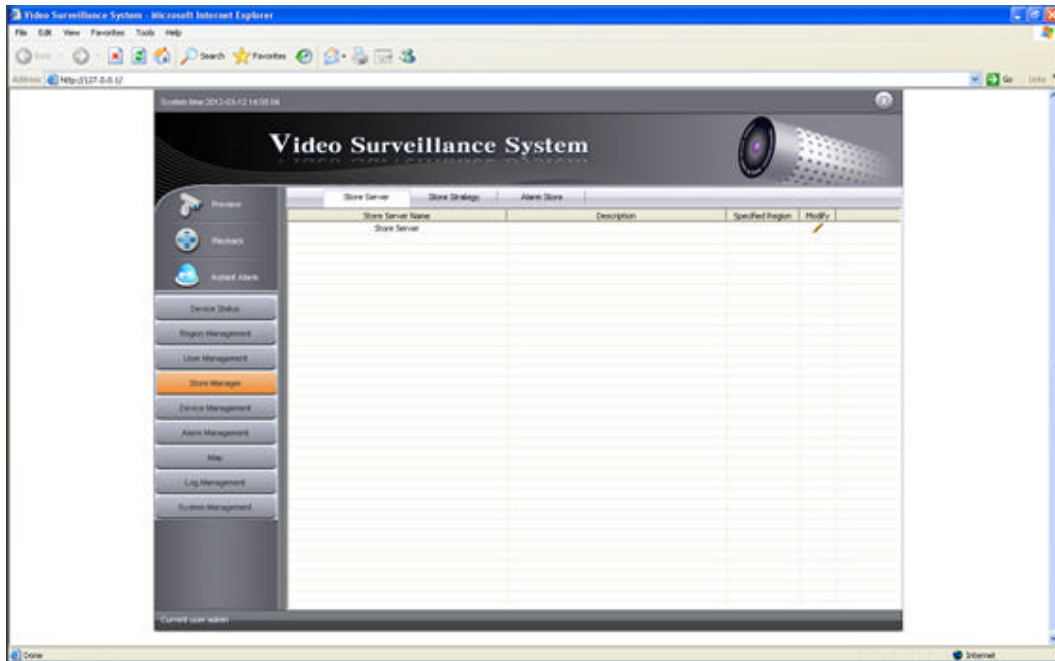
This function revises the present logging user password, enter the former password and the new password, click "revise password" to revise.

5.4 Storage management

Storage management including submenu: storage server, storage program, alarm storage.

5.4.1 Storage server

Choose "Store manager" – "Store server" to enter interface as follows:



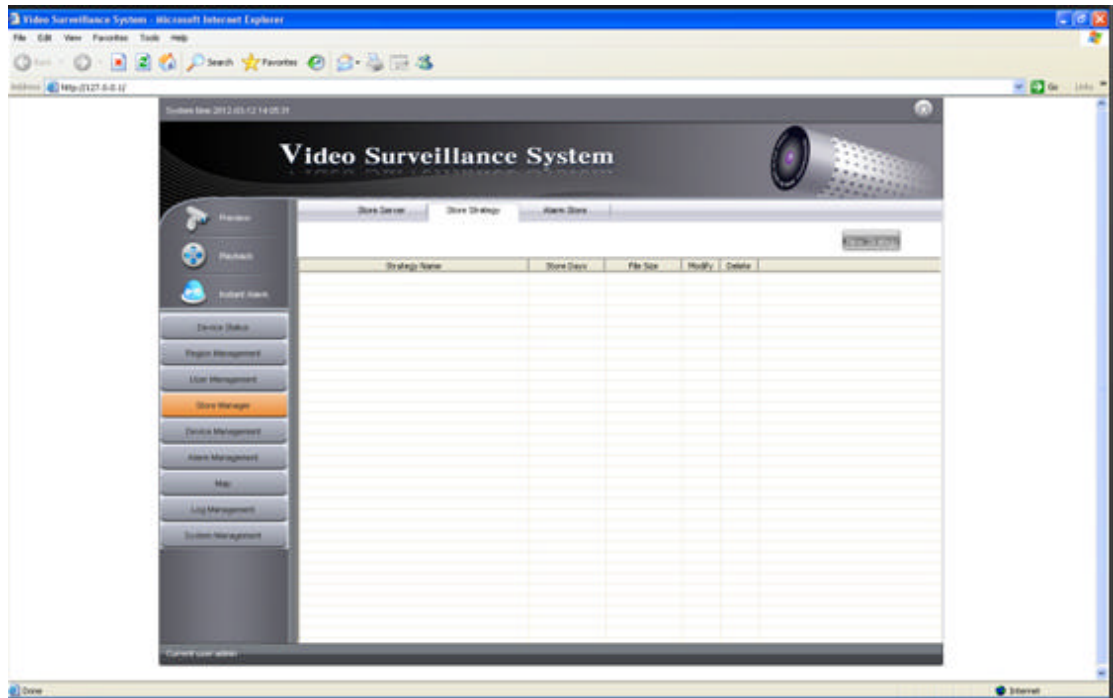
Alteration: click this button to open the new added input interface of storage server, and then enter the corresponding information in the input interface including server name, describe information, belonging area, storage route (belonging area must be revised) , click "sure", and the saved information will be displayed in the storage server list.

Remark: 1.Storage server and platform server can be installed in different PC, once a storage server was installed, it will be displayed under the corresponding storage server list. To make identification easy, you should revise the storage information once a storage server was installed because there will be no more tips when stalling, as shown in the picture above.

2. Click "add" to add storage route, there will appear the actual existed disk drive(for example D,E) for choosing. Each time can only add, revise or delete one disk.

5.4.2 Storage program

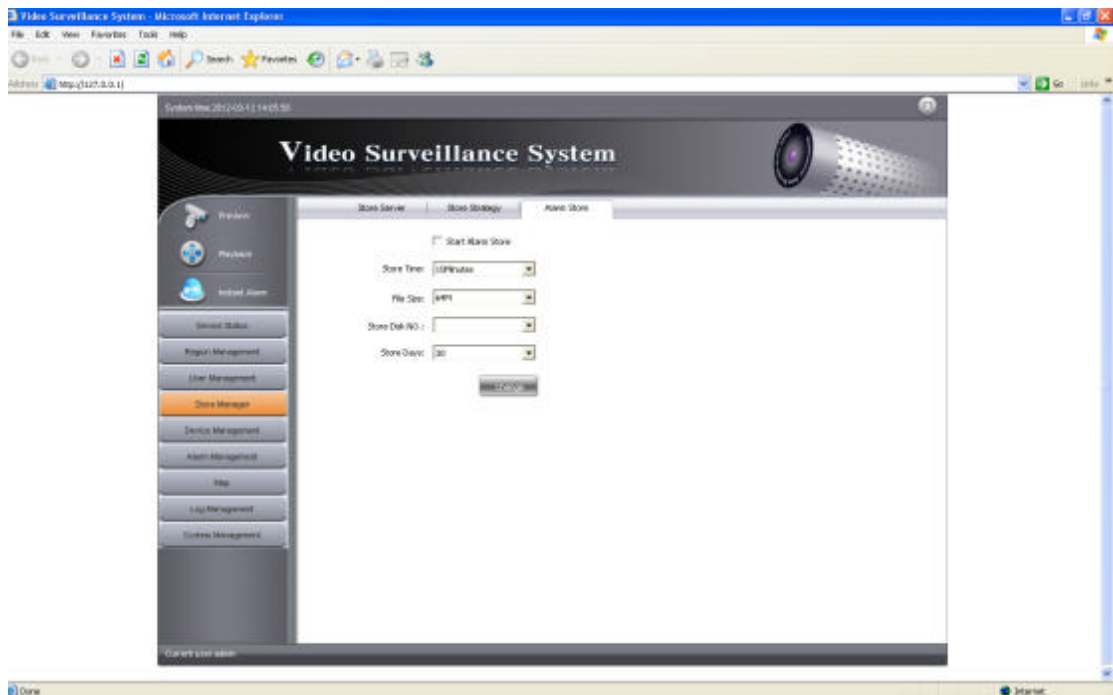
Click "Storage management"- "storage program" in the functional menu to enter the storage program page as follows



New add program: click this button to open the input page of new add program and enter the corresponding information including program name, storage day, file size and time bar option(storage program name must be filled) and then click "sure" and the saved content will be displayed in the present storage program list.

5.4.3 Alarm storage

Click 【storage management - alarm storage】 to enter the storage program page as follows.



This page includes start alarm storage option, storage time, file size, storage disk number, storage day.

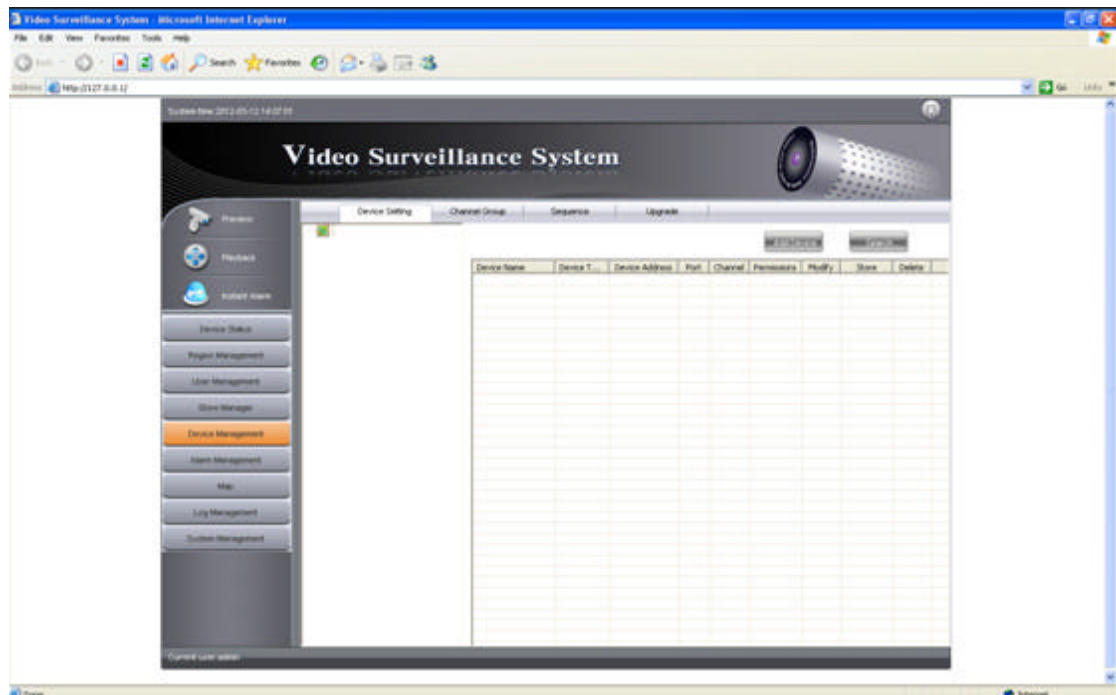
Remark: Disk number 1,2 ... corresponds with the order of storage route. For example, the order of storage route from top to bottom is E,D,B, here 1 stands for E, 2 for D, 3 for B, the rest may be deduced by analogy

5.5 Device Management

Device management include: Device Management, Sequence setting, Upgrade Management

5.5.1 Device Management

Click “Device Management” to enter the interface as below:



Add Device: Click to add new device, After input the device information, click “OK” to save to device list

Modify: Click to modify the device information. Click “Save” to finish setting.

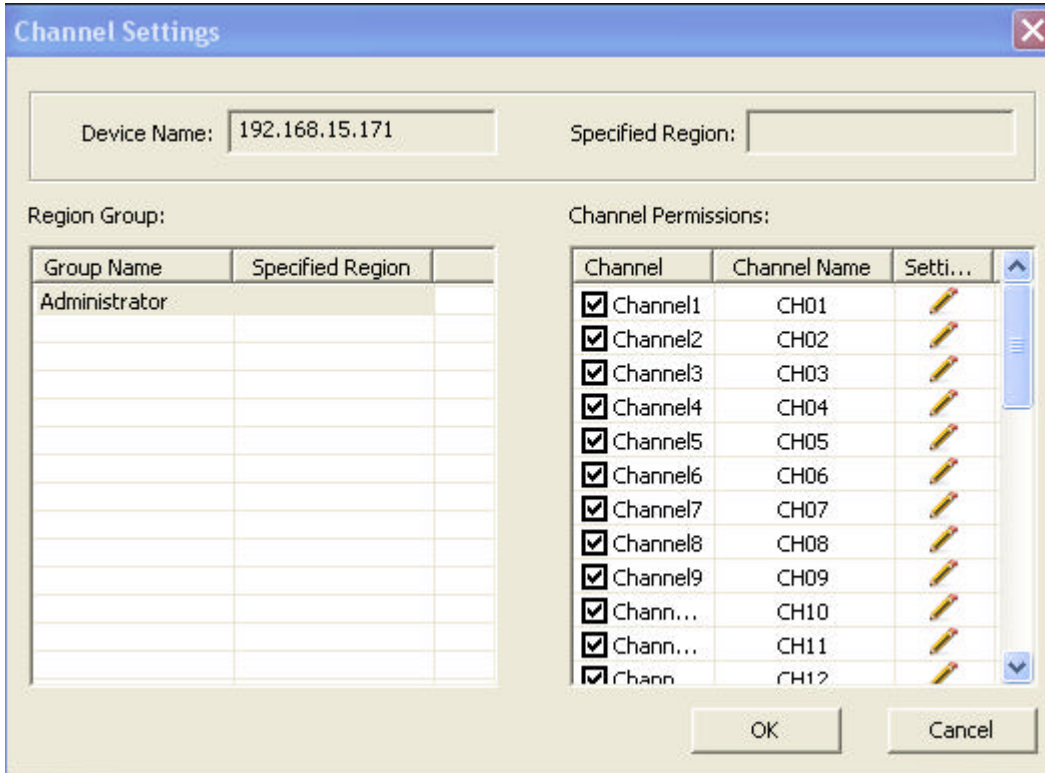
Device search: Click “Search” , it will auto search device in network connected, click target device to device list.

Notes:

1. Make sure added device information no mistake, otherwise it will occur some errors when do device management.
2. User can directly dragging one device in the list to other device region list.
3. When auto search device in network connected and adding to the list, it will auto connected by default username and password, alarm input and alarm output channel is 0, you can modify it according the real device info.

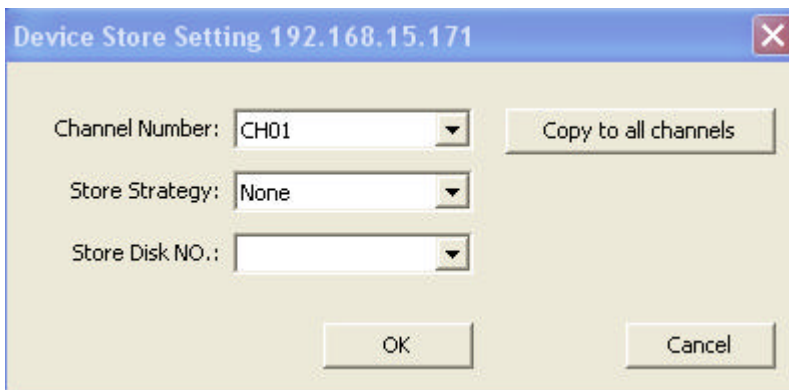
4. The totally channels No of all device in the list couldn't more than 800 channels.

Channel Authority: Click "Channel" in the device list to set the channel authority as below.



Set the channel authority in this page. (Default setting: all the channel authorities enabled)

Device store setting: Click "Device Store Setting" to enter the interface as below



The data of Store Strategy and the Store Disk No. will display only after setting in the Store Manager interface.

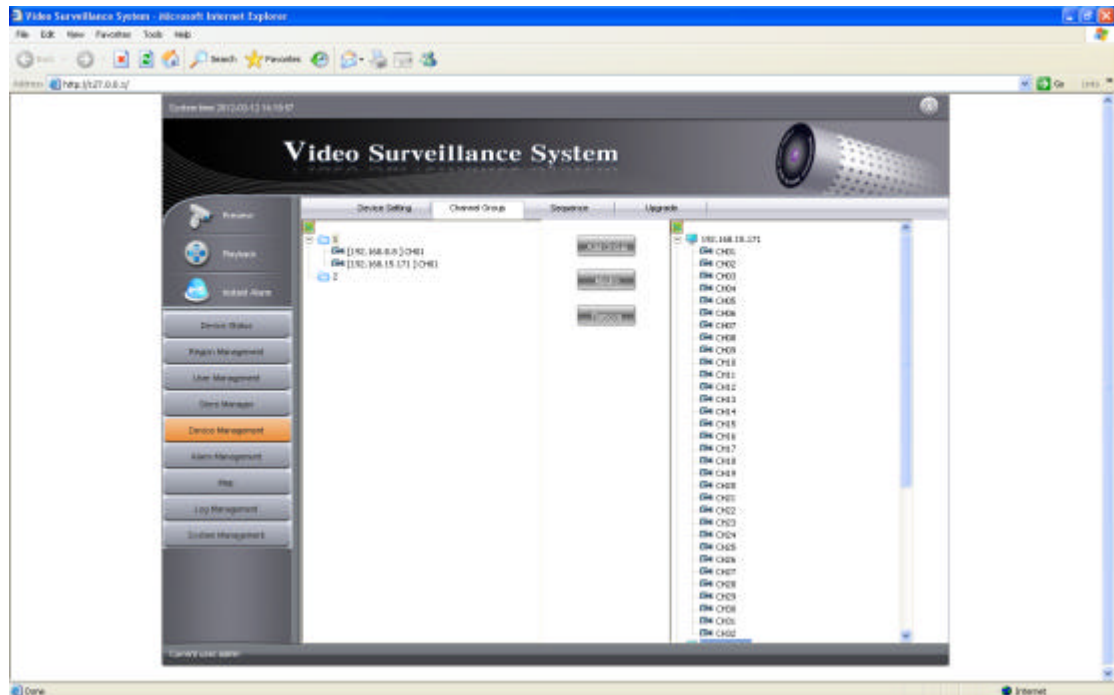
Remark: Click the button of "Copy to all channels" and the copy will start without prompt of accomplishment

Remark: Click the button of "Copy to all channels" and the copy will start without prompt of

accomplishment

5.5.2 Channel Group

Click **【Device Management - Channel Group】** to enter the interface as below



Add group: Click to enter the add group interface, enter channel name and the channel group saved will display in related areas of area list.

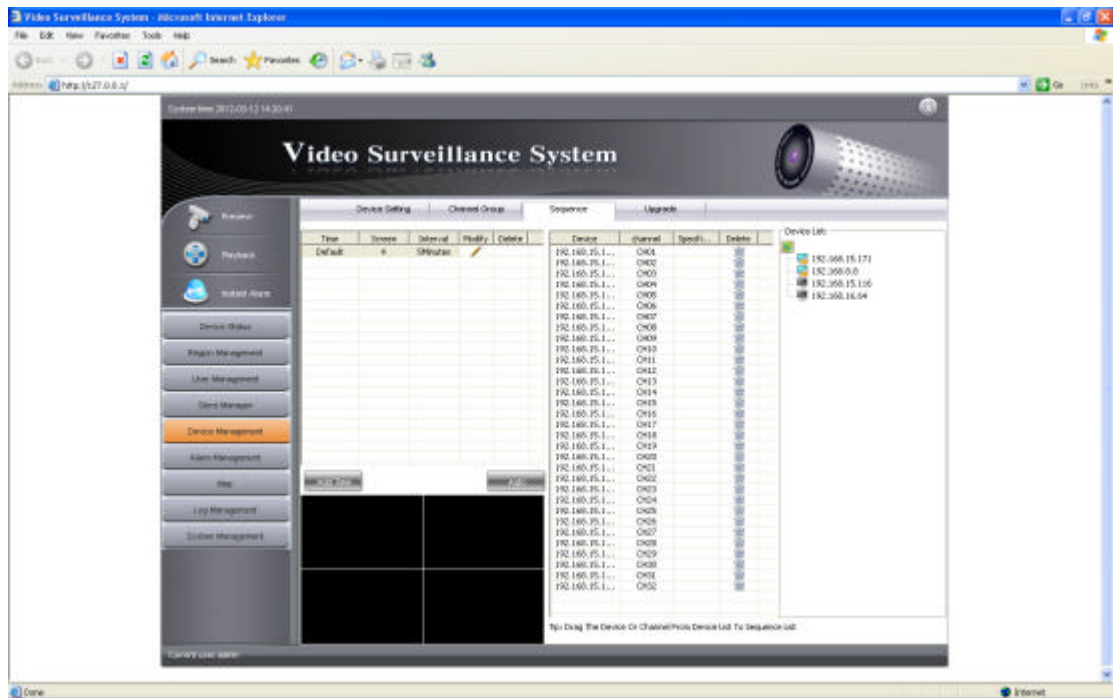
Modify: Click to pop up the modify interface, modify the related info and click "OK"

Remove: Click to enter the remove interface. Choose "OK" to remove and "Cancel" to cancel removing.

Remark: Channel group is convenient to open channels of different devices when real time monitoring

5.5.3 Sequence Setting

Click **【Device Management - Sequence Setting】** to enter the interface as below



Add Time Period: Click to enter the time period interface. After input information, click "OK" to save.

Modify: Click to enter the modify interface. After modify information, click "OK" to save.

Delete: Click to delete selected time period

Auto Sequence: Click to set the current time period sequence

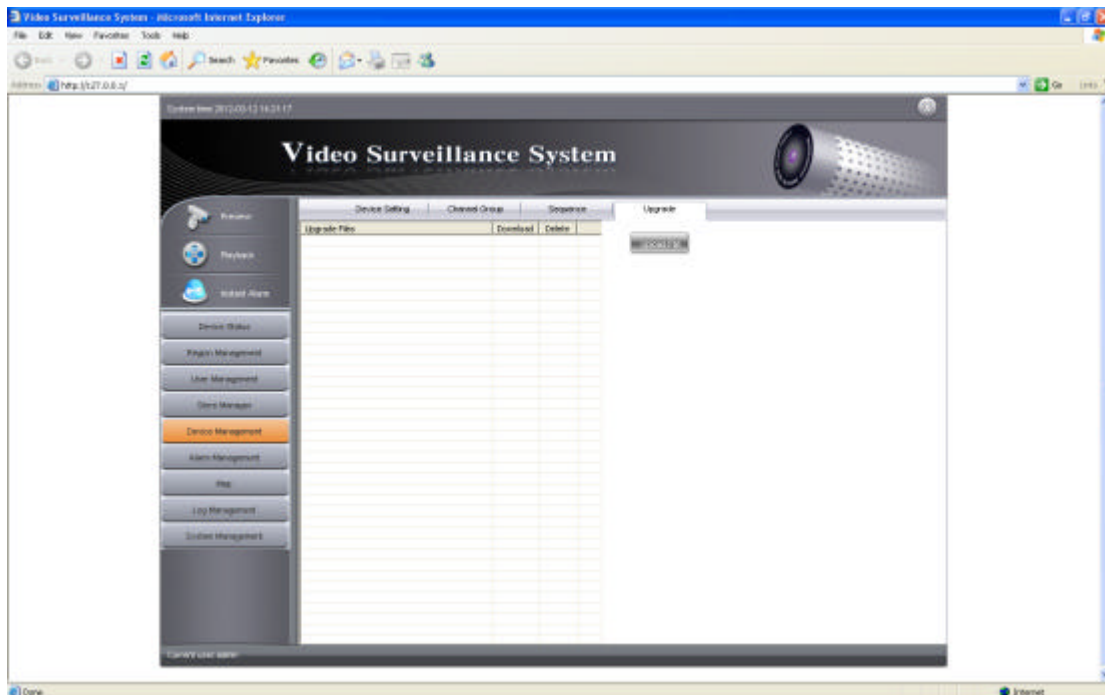
Specified Sequence: Click set the current channel sequence

Drag Device: Drag the device to set sequence channels

Delete Channel: Click to delete sequence channel

5.5.4 Upgrade Management

Click **【 Device Management - Upgrade Management 】** to enter the Upgrade Management interface



Upload File: Click to enter select file interface. After select upgrade file, click upload file to Server and display on file list.

Download: Click to download upgrade file to local

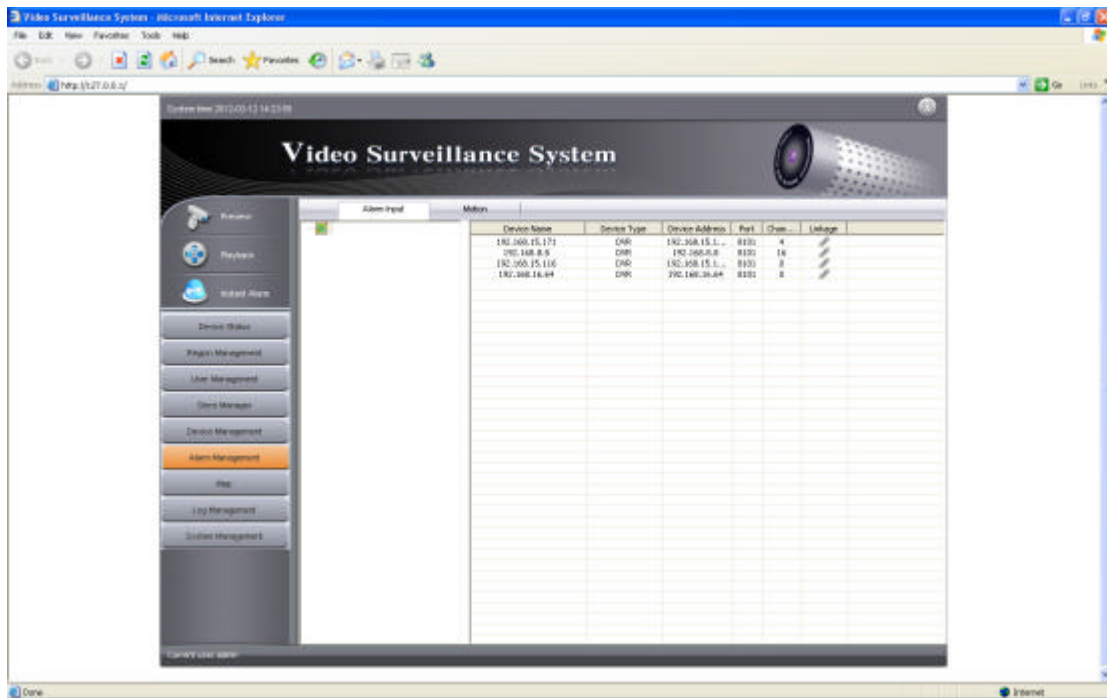
Delete: Click to delete upgrade file

5.6 Alarm Management

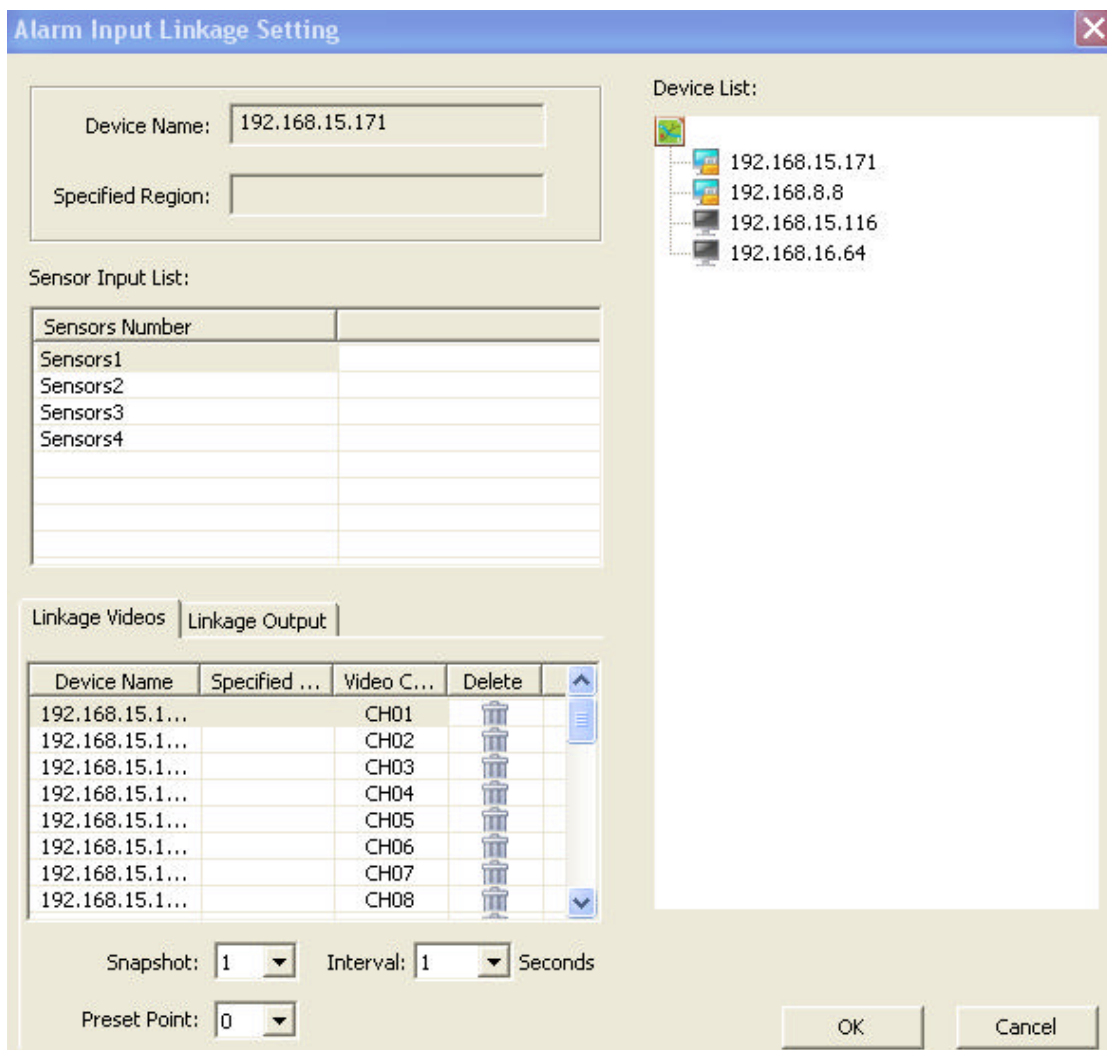
Alarm Management includes: Alarm input, Motion Detection

5.6.1 Alarm Input

Click **【Alarm Management - Alarm Input】** to enter alarm input interface



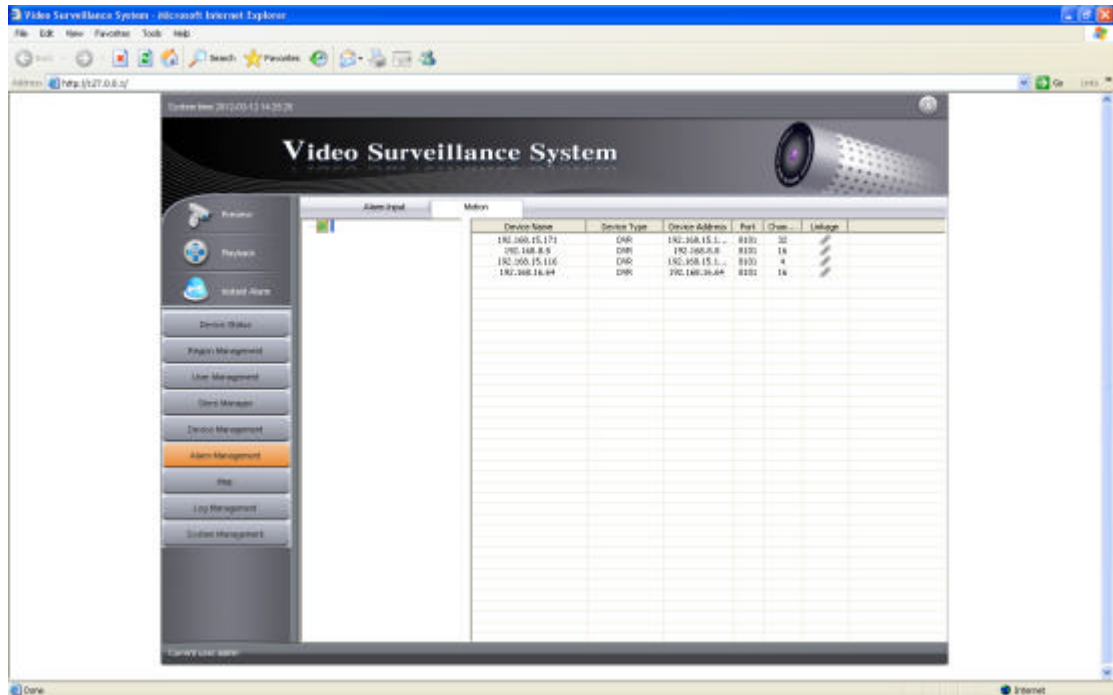
Click Related to display Alarm Relation Setting



Set the Alarm channel related video and input. Related to all channels and inputs in default. User can set snapshot No.m interval and alarm to preset point. Drag the device in the device tree of the list to set.

5.6.2 Motion Detection

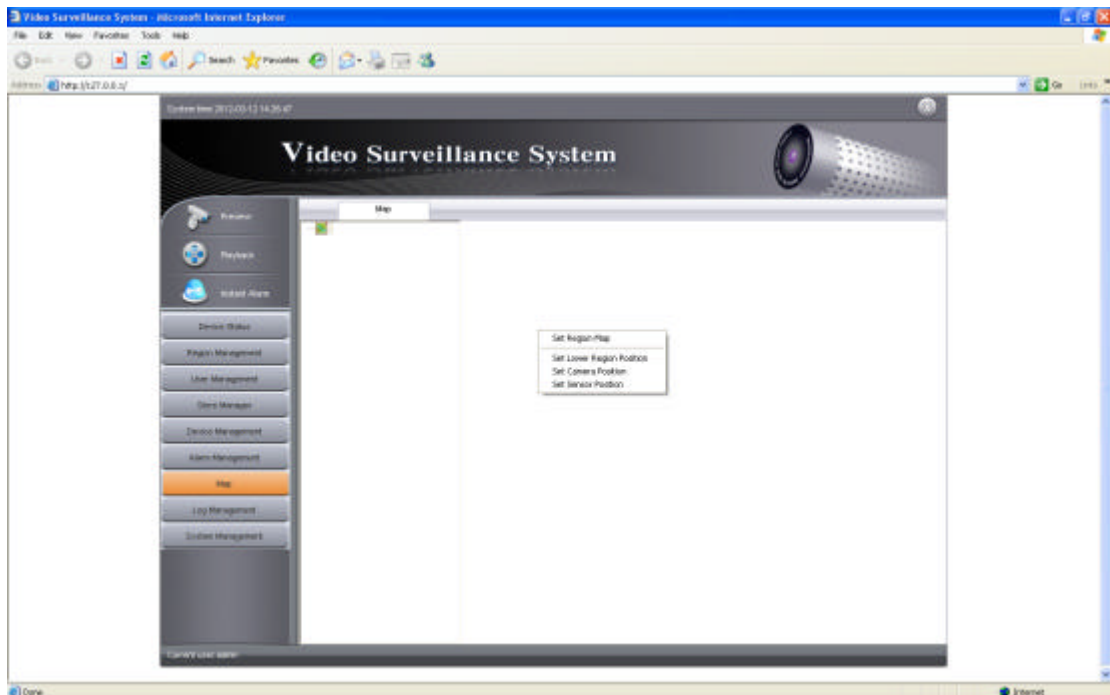
Click **【Alarm Management - Motion Detection】** to enter Motion Detection interface.



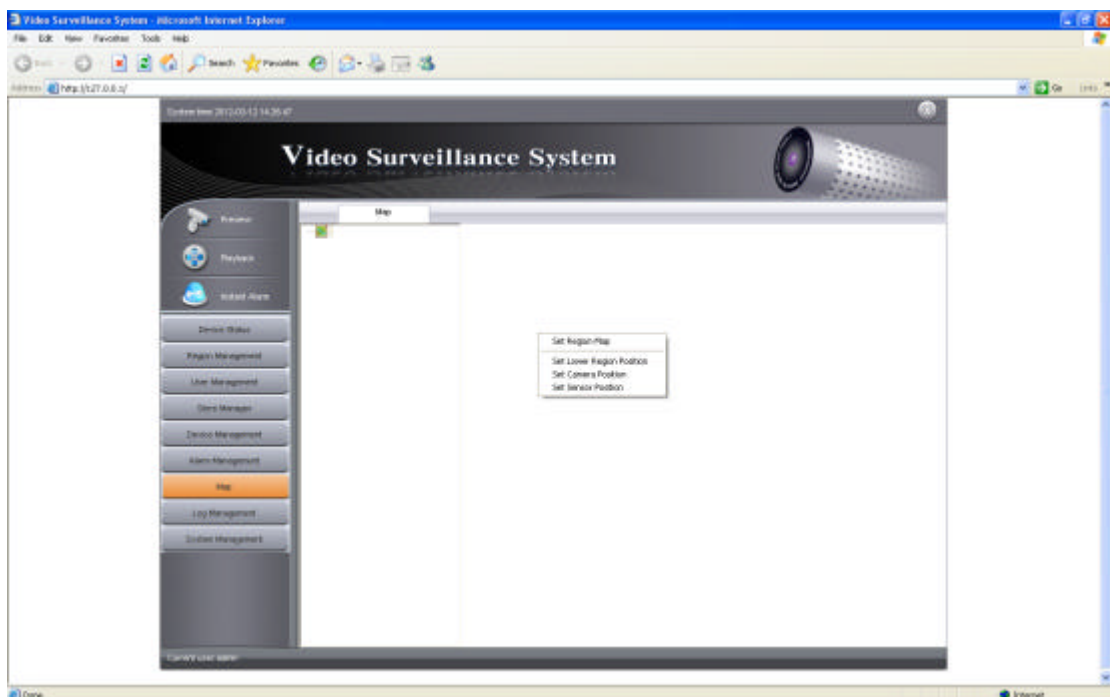
Motion Detection setting is the same as Alarm input

5.7 E-Map Function

Click **【Map - Map】** to enter the Map interface



Remark: Select the position and right-click the blank in the right border to enter the interface as below. (Operations below can only be done after selecting the position)



Set Region Map: Click to select the map(JPE form), click "OK" and the map will display on the right border

Set lower Region Position: Click to enter the interface of Set lower Region Position, select related info and click "OK" to generate a lower region icon on the right border

Set Camera Position: Click to select related info and click "OK" to generate a camera

icon on the right border

Set Sensor Position: Click to select related info and click "OK" to generate a sensor icon on the right border

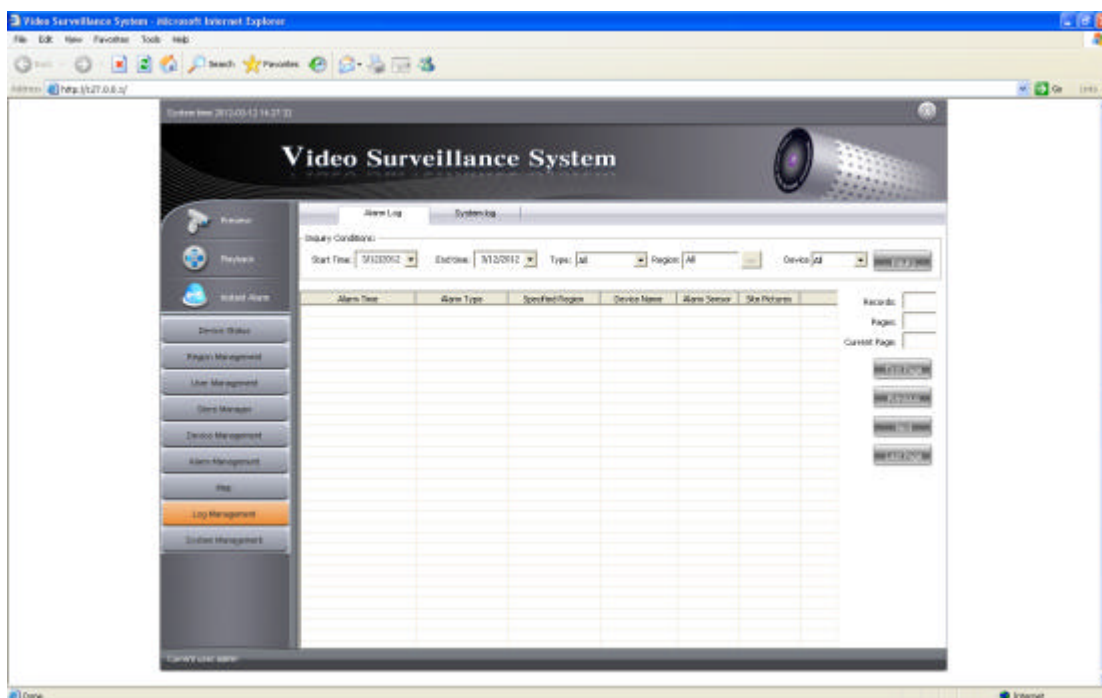
Remark: Each region can only add one map. Use the mouse wheel to zoom in and out, or hold down the left mouse button to drag. Region icon, camera icon and sensor icon are referred to as nodes. Properties can be set to delete the nodes.

5.8 Log Management

Log management includes Alarm Log and System Log.

5.8.1 Alarm Log

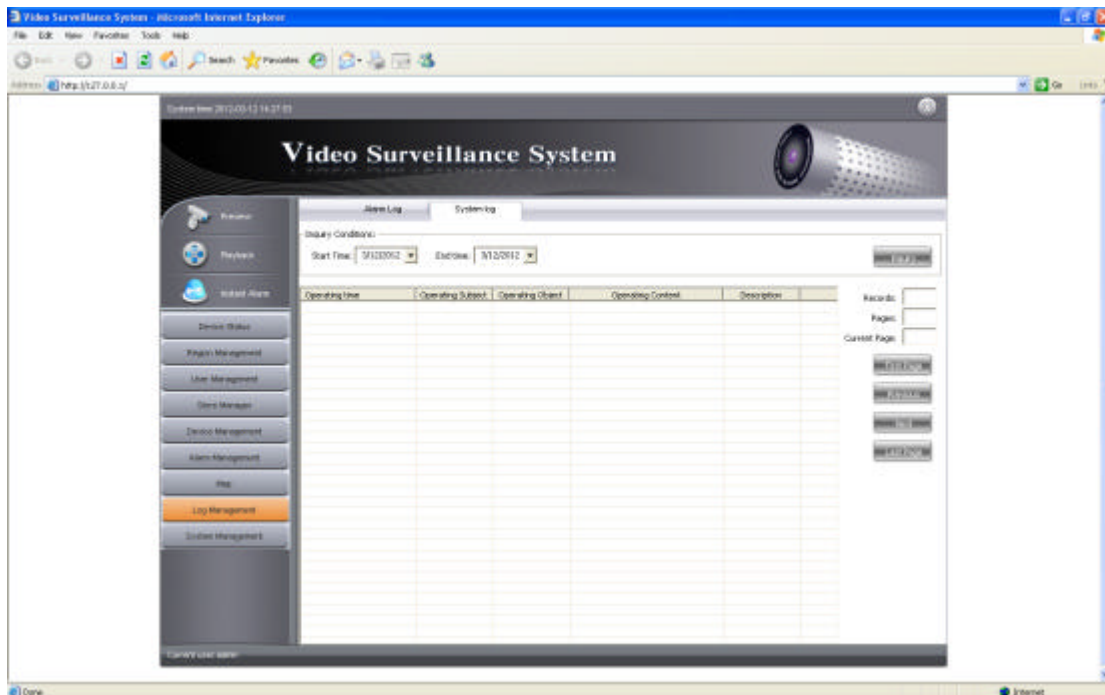
Click **【Log Management - Alarm Log】** to enter the Alarm Log interface



Input search terms and click search to display all the eligible alarm log record. The number of records and pages is displayed on the basis of query time and click "Next" to flip over.

5.8.2 System Log

Click **【Log Management - System Log】** to enter the System Log interface



Input search term and click search to display all the eligible system log record.

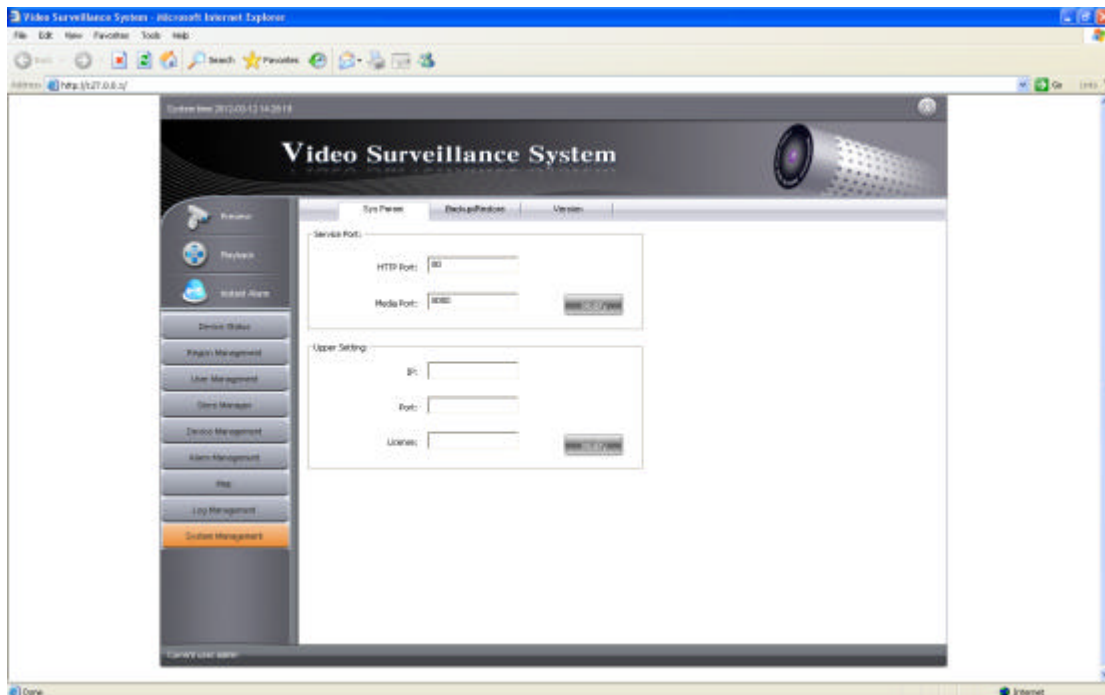
Note: System log is not the DVR log but the CMS operation log.

5.9 System Management

System Management interface includes system parameter, backup/restore and version info.

5.9.1 System Param

Click **【System Management - System Param】** to enter the interface as below:



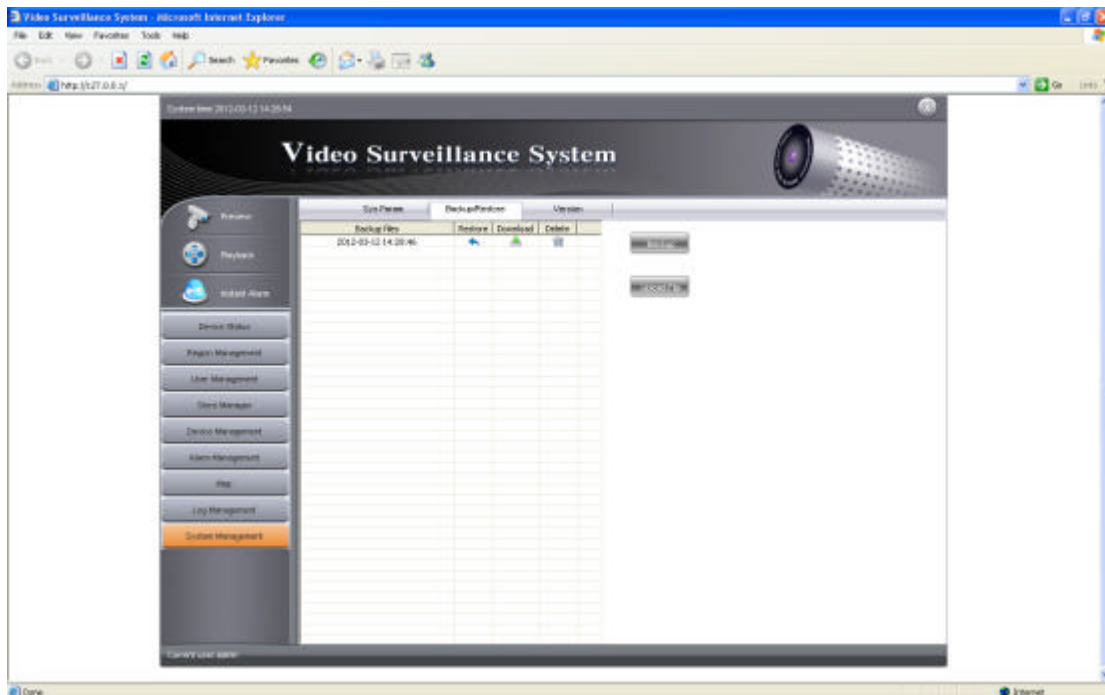
HTTP Port Modify: Modify HTTP Port and click "Modify" to finish
Media Port Modify: Modify Media Port and click "Modify" to finish
Note: No prompt when modifying successfully.

5.9.2 Backup/Restore

Backup function is to backup the system settings of CMS, such as device info, sequence settings, alarm settings.

Restore function is to restore the system settings via backed up system files. Backup/Restore functions can be used for restoring the system settings of CMS.

Click **【System Management - Backup/Restore】** to enter the interface below:



Backup: Click backup to generate the backup of current system settings and display in the backup list

Upload File: Click to input the backup files and click "OK" to backup the file onto the server and display in the file list

Download: Click to download backup file onto local computer

Delete: Click to delete the backup files

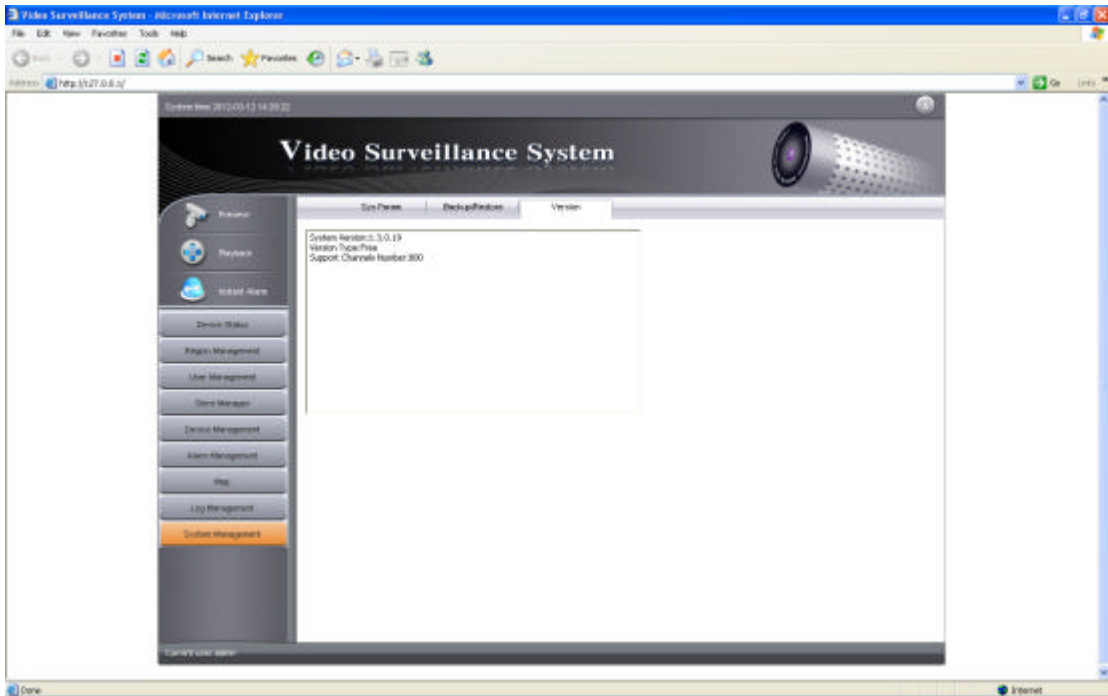
Restore: Click to restore the system of specified date

Note: Prompt of "Restart System" while restoring system.

5.9.3 Version Info

Version info includes system version number, version type, expired date, support channels number. If the version type is "registered", the support channels number will be more than 800.

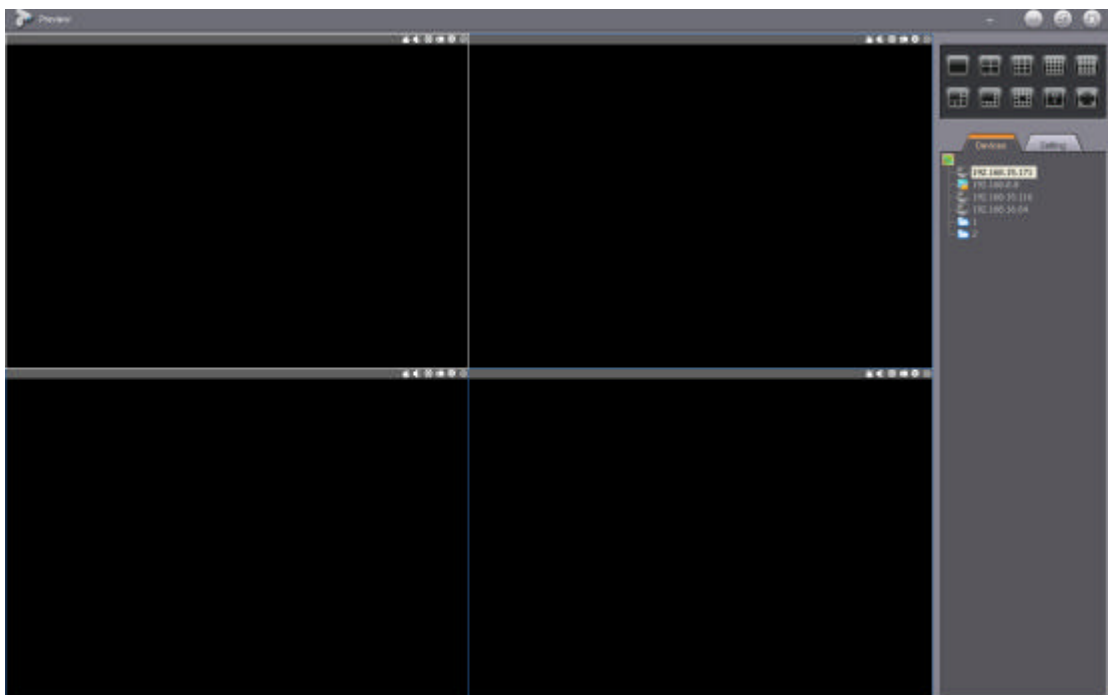
Connect with the dongle, click **【System Management - Version Type】** to enter the interface as below:



Registered version: When expired, version type will still display as "registered", and the expired date will not change, but the support channels numbers will turn into 800.

5.10 Real-Time Monitoring

Click 【 Real-Time Monitoring 】 to pop up the real-time monitoring page (as below). Real time monitoring can pop up multiple pages, in order to monitor simultaneously with multiple monitors.



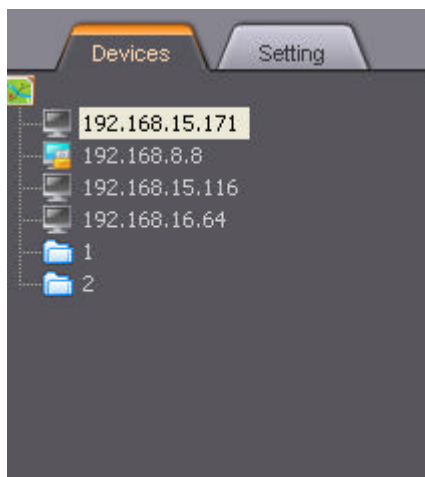
5.10.1 Screen Switch

Click the function icon on the upper right corner of the screen to switch screens, set the screen division.



Screen segmentation including 1/4/9/16/25/6/8/13, also can be set manually, click on the icon of '?', the maximum can be set with 10 x 10, the last icon will indicate the image screen by Real time monitoring .

5.10.2 Device list tree



Expand Device: Click on the tree control nodes, expand the lower nodes;

Double click to play: Double-click the device node or the channel node, play the video in the current selection window;

Direct Play: Pop up the menu by right click the device node, select 'Direct play', can play the real-time data of host directly;

Arm: Pop up the menu by right click the device node, select 'Arm', the device start to arm;

Timing: Pop up the menu by right click the device node, select 'Timing', the device start to arm;

Upgrade: Pop up the menu by right click the device node, select 'Upgrade', pop up the

upgrade page, select the upgrade file for device upgrades;

Device Log: Pop up the menu by right click the device node, select 'Device Log', pop up the inquiry page;

Restart: Pop up the menu by right click the device node, select 'Restart', restart the device;

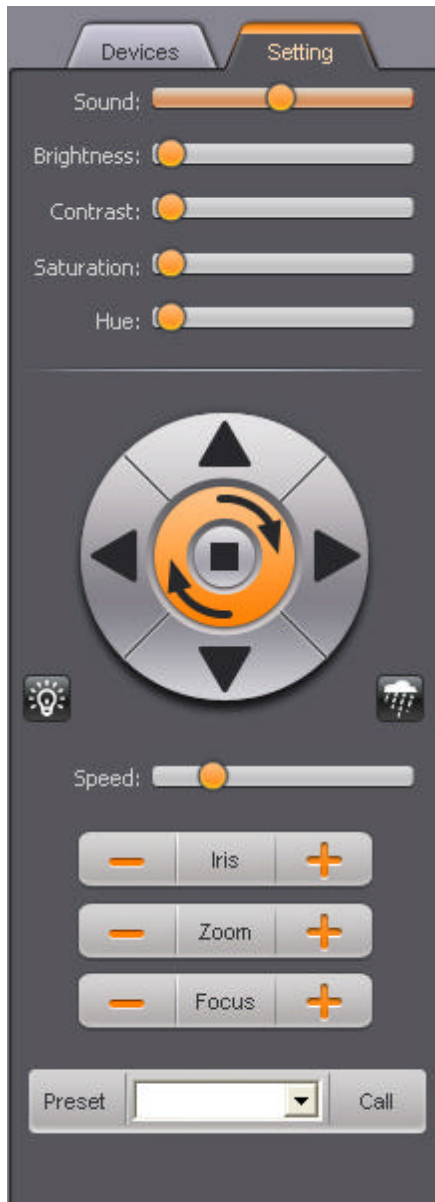
Shutdown: Pop up the menu by right click the device node, select 'Shutdown', shutdown the device;

Alarm parameters setting: Pop up the menu by right click the device node, select 'Alarm parameters setting', open device alarm parameters setting page;

Channel parameters setting: Pop up the menu by right click the device node, select 'Channel parameters setting', open device channel parameters setting page;

Search: Enter the appropriate information, can find channel, channel grouping and device.

5.10.3 Parameter Setting



Channel Video Parameter Setting: Real time setting to select video parameters of channels, including brightness, contrast, saturation, hue;

PTZ control: Click the corresponding button to adjust、 control PTZ, user can the control PTZ up/ down / left / right, aperture, focus, zoom, wipers and lights. And also, user can control the PTZ via preset, call simultaneously.

5.10.4 Video Playback



The playback device, channel and speed are displayed on the top of the window.

Close: Click on the video window on the top of the 'off' button, close the currently playing video;


Channel Parameter: Click on the video window on the top of the 'Channel parameter' button, open channel parameter setting page;

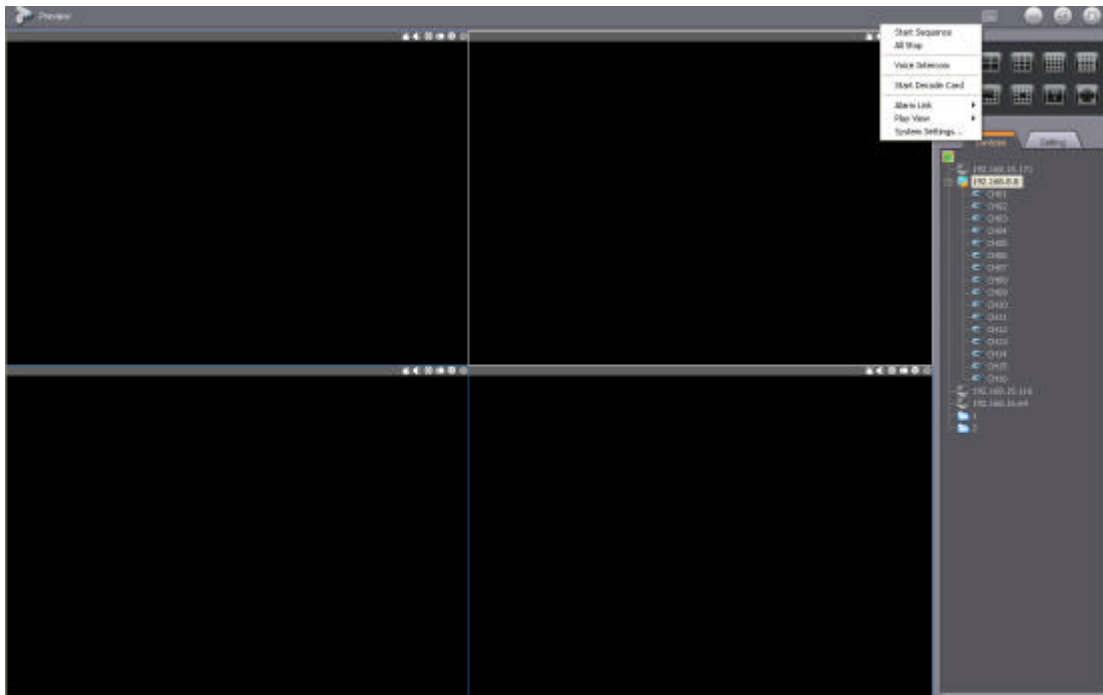
Snapshot: Click on the video window on the top of the 'snapshot' button, take a snapshot for the current view;

Record: Click on the video window on the top of the 'Record' button, record for current video, save to local path.

Voice: Click on the video window on the top of the 'Voice' button, open/close for current channel play voice.

5.10.5 System Menu

Click the button "" on the upper right corner to pop up the menu below:



Start Sequence: Select 'Start Sequence', start the video sequence according to current sequence setting;

All Stop: Select 'All Stop', to stop all the playback;

Voice Intercom: Select 'Voice Intercom', pop up voice intercom page, move device to the intercom list to execute device intercom or voice broadcasting;

Start Decode Output: Select 'Start Decode Output', start the decode window, move device to the windows and decode on the wall;

Play the linkage video: Select 'Play the linkage video', when receive alarm signal, will play the linkage channel video immediately;

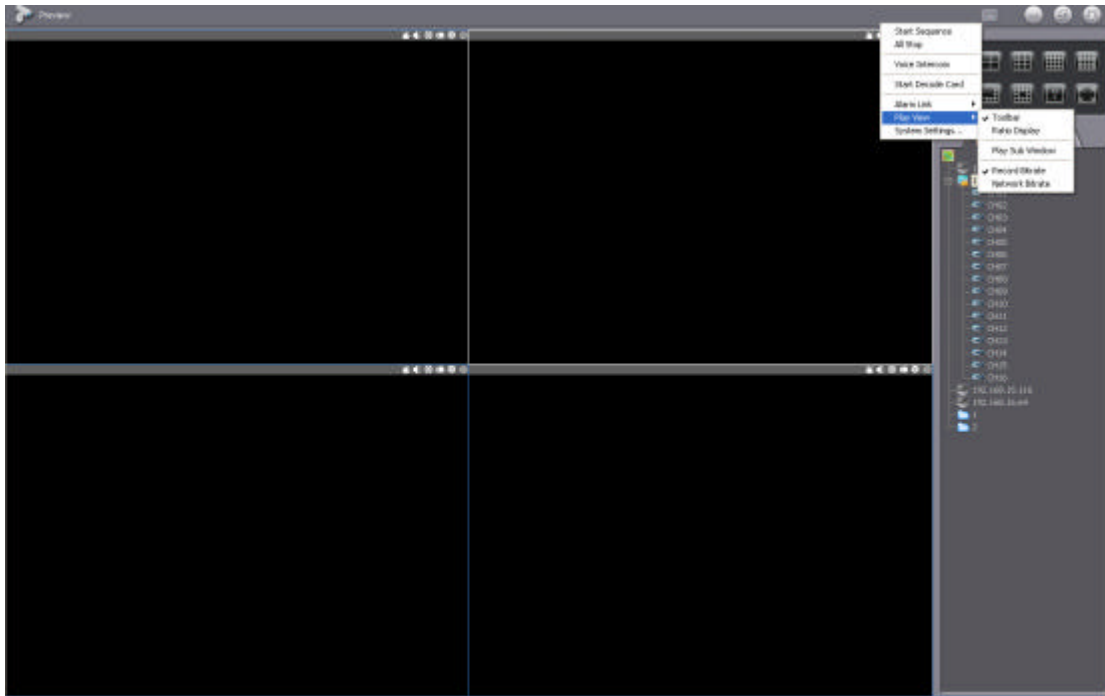
Play View included: Toolbar、Ratio Display、Play Sub Window、Record Bitrate、Network Bitrate , see picture 1

Toolbar 192.168.13.222 CH01 [57KB/S]

Play Sub Window see picture 2

Real time image can switch window hereon to open Record Bitrate or Network Bitrate, but need to re-open the image.

Users can select Main Stream or Sub Stream on preview, but need to re-open the image.



Pic 1

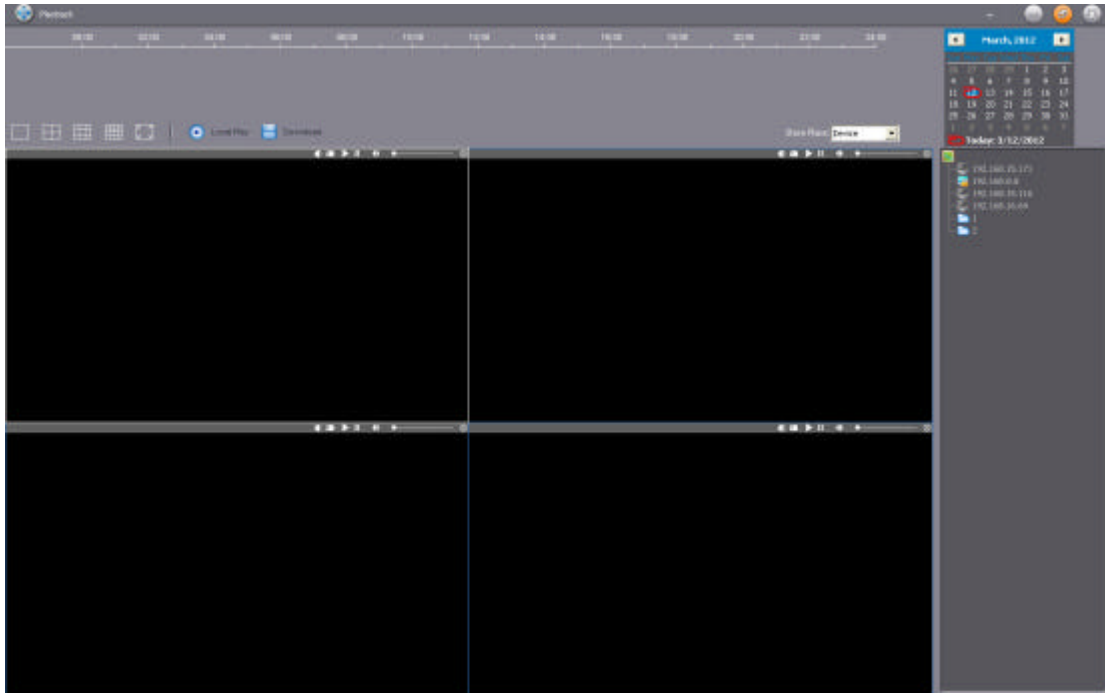


Pic 2

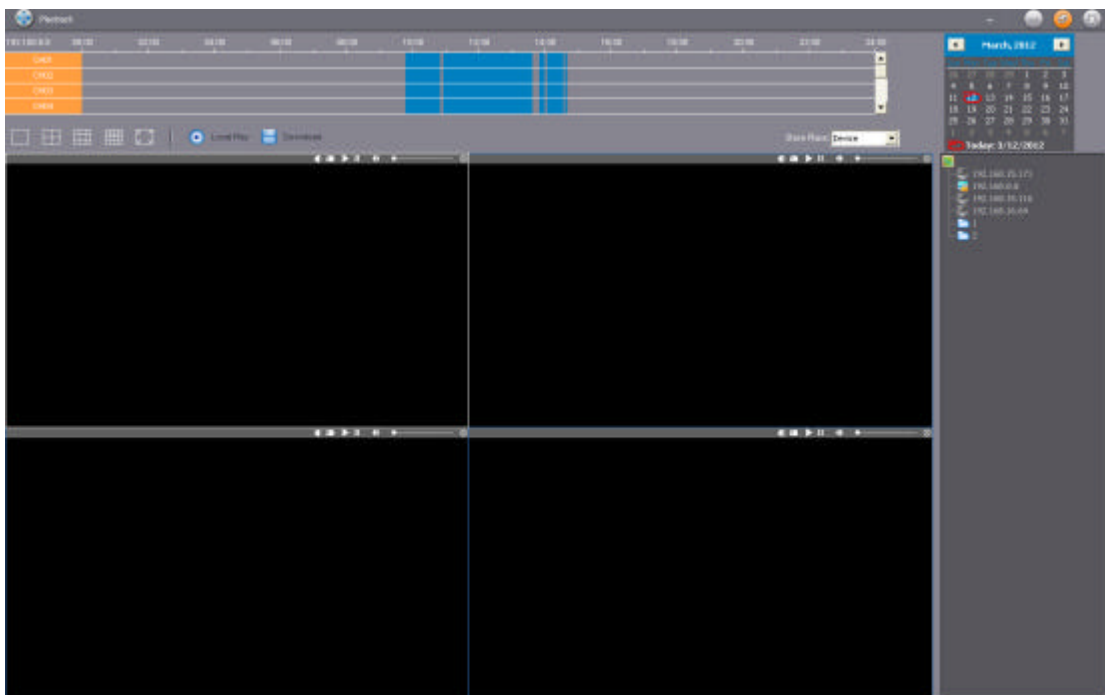
System Setting: Select "System Setting" , pop up system setting page to set the snapshot and recording file path.

5.11 Historical Playback

Click the 【Historical Playback】 under function menu bar to pop up Historical Playback page (as below).



Select video device or storage server in the "Store Place", then drag the device (in the device list) into time list manually, wait for 1~2s, the related data will appear as below:



Blue part means video data exists in that time point, orange part means selected shift

playback channel. After selected the channels, double click any video-data-time-point to play. Gray part means no data or no selected channel.

5.11.1 Screen Switch

Click the function icon on the left corner to switch the screen, set the screen division.



5.11.2 Function Button



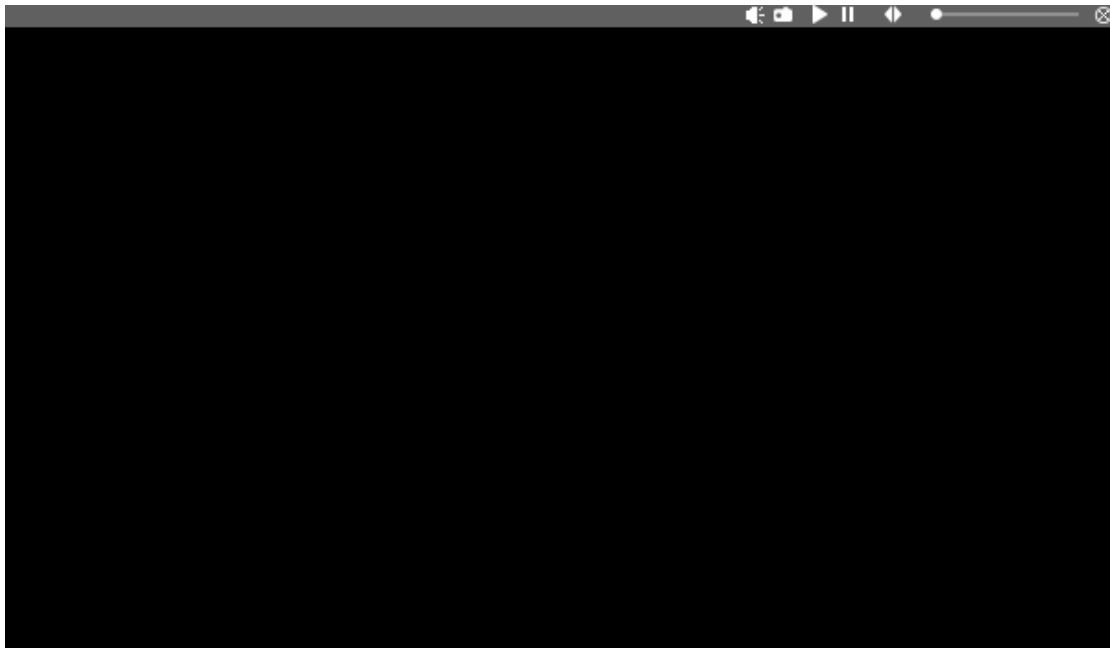
Local Play: Click to pop up the file dialog box, choose a video file to play in the specified window.

Search: Click to pop up the file dialog box, drag video channel of right device list into the file dialog box, select searching time, then click "Search" to seek eligible video record which will display on the video list above.

Play: Select one record in the video record list, click "Play" to play this video in the specified window.

Download: Select one record in the video record list, click "Download" to download this video into local PC. If the capacity of download disk is full, there will be a prompt which says "Not enough free disk space".

5.11.3 Playback Control



The bottom of the playback window displays the current device, channel and speed.

Stop: Click to stop the current video

Progress Bar: Display the current playback progress. User can drag the progress bar to select the playback time

Fast Forward: Click the fast forward button to fast forward the current video


Pause: Click to pause the current video

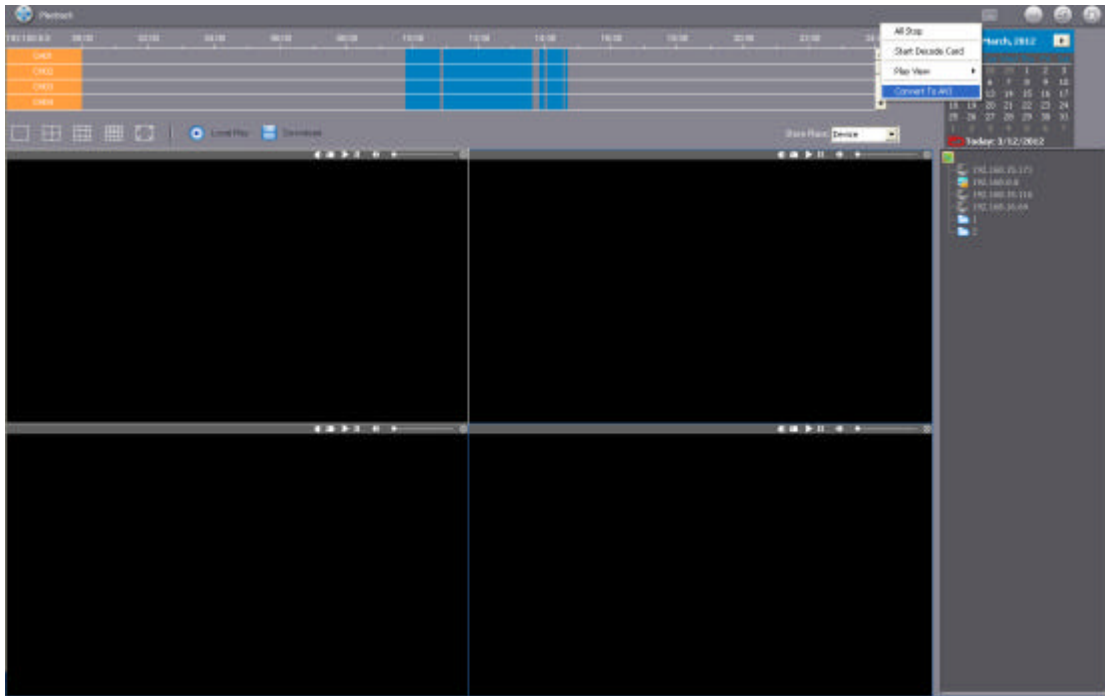
Continue: Click to continue the current video

Snapshot: Click to get the snapshot of the current video

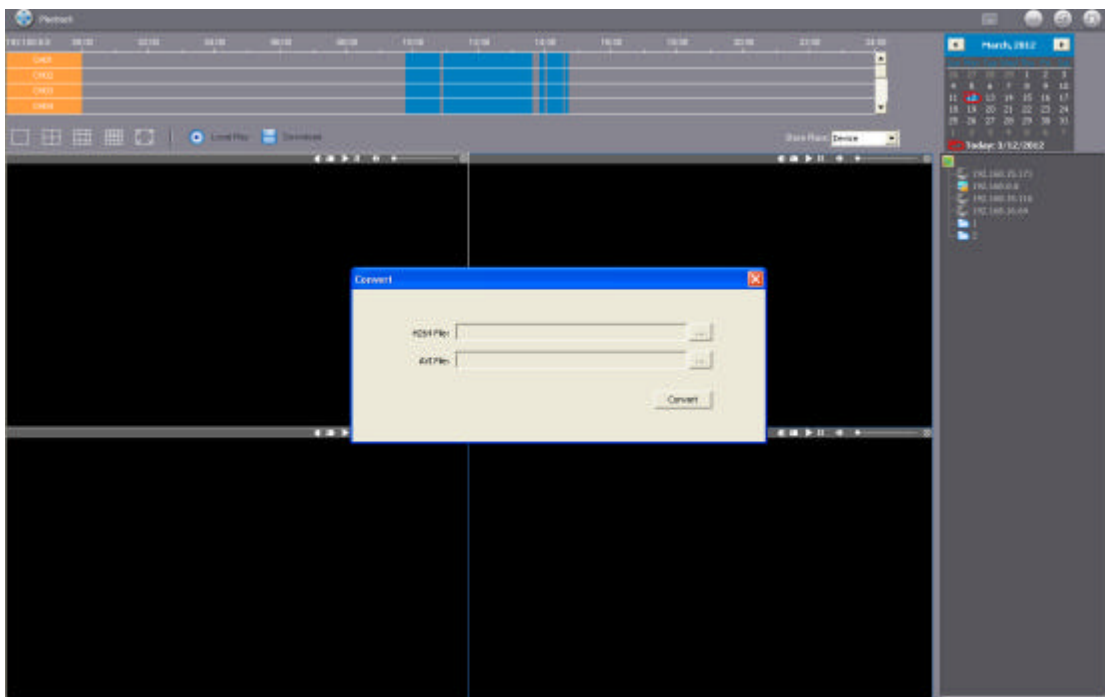
Audio: Click to close/open the current channel audio

5.11.4 AVI file conversion Function

Click the  button on the upper right corner in the Playback interface to pop up the menu below:



Click "Convert to AVI" to pop up the menu below:

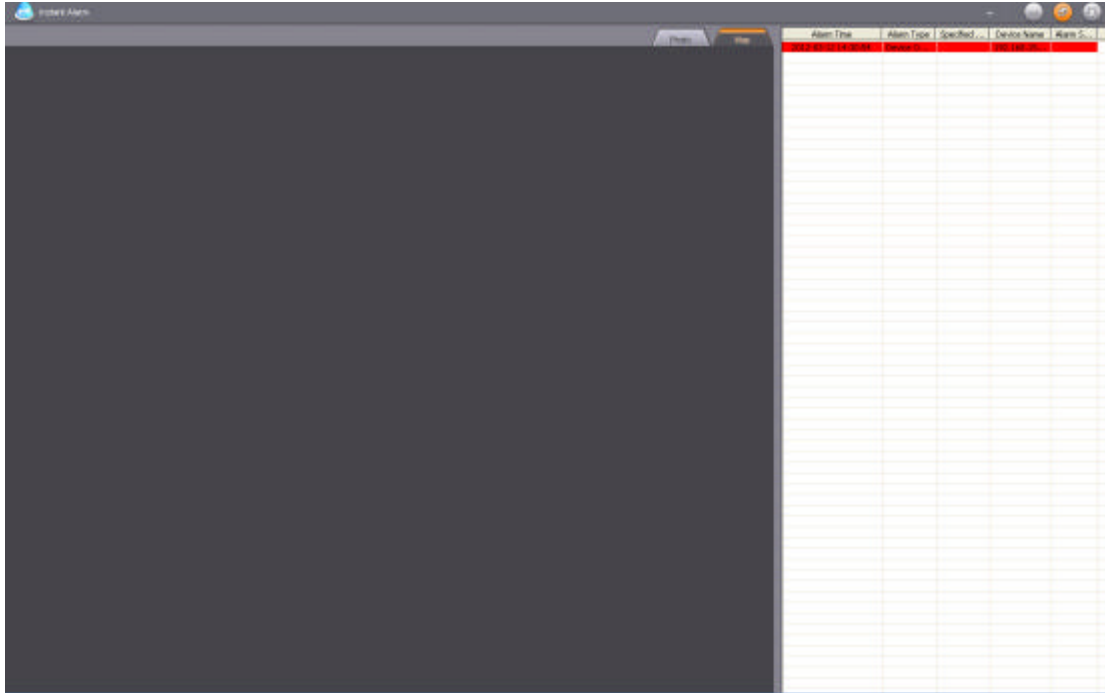


Select a downloaded file or a file from storage server, system acquiescently locates the converted file in the original path. Prompt will be given after success conversion.

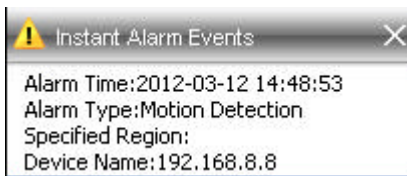
5.12 Instant Alarm

Instant Alarm includes 2 submenus: Photo and Map

Click 【Instant Alarm】 to enter the interface as below:



When the instant alarm triggers, the alarm hint will pop up on the upper right corner as below. Click Instant Alarm Events to enter the instant alarm interface as above:



The left side is alarm snapshot and alarm video, and the right side is instant alarm e-map, which displays the node of the current alarm, when it's red and twinkling, double click the video icon to check alarm channel real-time video; double click the sensor icon to check all the real-time videos ganged from the alarm sensor.

Red alarm record indicates it's unread. Double click to check it and it'll turn gray. If the platform is once closed, the record will be in Alarm Log next time when opening.

6、 System Function Overview

6.1 Central Storage

1. Store data into the Storage Server PC

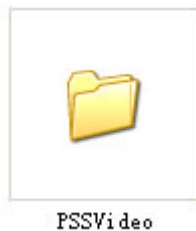
Set the storage server first, mainly set its path (Storing in C disk is not recommended). Secondly set the storage path, which corresponds to the disk; Finally set central storage in device management interface. The storage is operable if the device connection is normal.

2. Store data into disk array

First set disk array into a letter according to the disk array introduction, then platform is able to store data in Z disk(the disk array)

3. Read stored data

(1) Enter the disk according to the storage path, find file below, it can be played via player. See the file name below:



(2) In Historical Playback menu, select "Storage Server", double click device or drag device into time search box to play videos from storage server directly.

4. The implementation of central storage consults device management quick operation.

6.2 Cascading

Add a subordinate in area management - subordinate settings to gain the registration code, send the registration code to subordinate, then subordinate fills IP address, port, registration code and save to complete. If network connection is normal, new added

subordinate can be seen in the device list of superior, of which the icon is 