

Preface

Thank you for selecting our products. We will offer the best service for you wholeheartedly.

We take 16 channel DVR (960H) as a sample. In this series, different product models' configuration will have a little difference, and it will work the difference between product function and operation.

It is for reference only. We will not provide any new information separately for later firmware update. The updating files will be added into the new edition of the user manual and will also be posted on our website in the download center. This user manual may have some inaccuracy or misprint. We sincerely hope your timely feedback and comments to let us correct and improve this booklet in the subsequent edition.



CONTENT

Preface	1
Chapter1 Brief Introduction about the DVR	6
1.1 Summarization	6
Chapter2 Technology Guideline and Main Functions	6
2.1 Technology Guideline	6
2.2 Main Functions	8
Chapter3 Equipment Installation and Illustration	12
3.1 Installation Environment and Cautions	12
3.1.1 Attentions on Installing Hard Disk	13
3.2 Package Checking	13
3.3 Device Interface	14
3.3.1 Video/Audio Connection	14
3.3.2 USB Backup Interface	14
3.3.3 Network Interface	14
3.3.4 Alarm Input/Output Connection	14
3.3.5 RS-485 Connection	18

- 3.3.6 Keyboard Controlling 18
- 3.3.7 Intercommunication Port 18
- 3.4 Front Panel Description 19
- 3.5 IR Remote Controller Operation 22
- 3.6 Mouse Operation 24
- 3.7 Menu Operation Description 26
 - 3.7.1 Menu Structure Chart 26
 - 3.7.2 Menu Option Schedule 27
- Chapter4 Device Operation 33
 - 4.1 Power On/Off and Login /Lock 33
 - 4.1.1 Keystroke Unlock/Lock 33
 - 4.1.2 System Login 33
 - 4.1.3 System Lock 34
 - 4.1.4 Main Menu 34
 - 4.1.5 Status Bar 34
 - 4.2 Power on Wizzard 35
 - 4.3 Data Inquiry and Playback 36
 - 4.3.1 Time Inquiry 36
 - 4.3.2 Event Inquiry 36
 - 4.3.3 Data Management 39
 - 4.4 Backup Management 39



User Manual

4.4.1 Quick Backup	40
4.4.2 Manual Backup	40
4.4.3 Schedule Backup	40
4.5 Record Setup	41
4.5.1 Record Parameter	41
4.5.2 Screenshots Parameter	42
4.5.3 Advanced	42
4.5.4 Manual Record	43
4.5.5 Manual Snapshot.....	43
4.5.6 Schedule Record	44
4.6 Alarm Setup	44
4.6.1 Motion	44
4.6.2 Sensor	46
4.6.3 Alarm Output	46
4.6.4 Other Alarms	47
4.6.5 Manual Alarm	47
4.7 System Setup	48
4.7.1 General Setting	48
4.7.2 Time Setting	49
4.7.3 Output Setting	50
4.7.4 COM Setting	53
4.7.5 PTZ Setting	54
4.7.6 Network Setting	56
4.7.7 Input Settings	61
4.8 HDD Management	61

- 4.8.1 Basic Information 62
- 4.8.2 HDD Group 63
- 4.8.3 SMART 63
- 4.9 Information Inquiry 63
 - 4.9.1 System Information 64
 - 4.9.2 Record Status 64
 - 4.9.3 Alarm Status 65
 - 4.9.4 Online Status 65
 - 4.9.5 Log Inquiry 66
 - 4.9.6 Input State 66
- 4.10 System Maintenance 67
 - 4.10.1 Quick Settings 67
 - 4.10.2 User Management 67
 - 4.10.3 Reset to Default 68
 - 4.10.4 Upgrade Management 69
 - 4.10.5 Timing to Restart 71
- 4.11 Logout/Shutdown/Reboot 72
- 4.12 Password Reset 72
- 4.13 Power Resume 72
- Appendix 1: IE Operation Instructions 73
 - 1. LAN Configuration for IE Browse 73
 - 2. WAN Operation Instructions 74
- Appendix 2: Net DVR Q&A 77



Chapter 1 Brief Introduction about the DVR

1.1 Summarization

The series DVR are designed for video/audio digital surveillance system. They are adopting H.264 compress format, integrate the embedded RTOS and processor to realize all of the functions like video and audio acquisition and compression, storing, remote control, Multi-PTZ control and alarm in a single board. This series DVR achieve the integrate host to a single plate structure, which ensure the system's high-integration and reliability.

This series of equipment use private file systems MFS V2.0, namely flow media file system second edition. This file system is based on Microsoft FAT32 to innovate, suitable for DVR special file system, support more than 2TB hard disk; Long time operation does not produce disk fragments; Reasonable flow media operation scheduling, the operation has fast response; Increase check protection in the MFS key information, avoid key areas damaged cause to catastrophic problem.

This device can be the local independent work, also can build a strong safety monitoring system by network. Can be applied to Banks, telecommunications, electric power, transportation, intelligent community, factory, warehouse, etc.

Chapter 2 Technology Guideline and Main Functions

2.1 Technology Guideline

1. Video parameters

Video input: Composite video input, PAL (25fps), NTSC (30fps), BNC (1Vp-p, 75)

Video output:

1 channel composite video output, PAL (625 line), NTSC (525 line), BNC (1Vp-p, 75 Ω)

1 channel analog video output (VGA)

2. Audio parameters

Audio input: RCA interface port, input resistance: 10K Ω , input extent: Vp-p=2.0V LINE

Audio output: RCA interface, input resistance: 10K Ω , input extent: Vp-p=2.0V LINE

Voice chat: Input (3.5MM interface, input resistance: 10K Ω , input extent: Vp-p=2.0V LINE in/50mV MIC in)

3. Video compression: Compression arithmetic H.264

Default resolution FD1: PAL (704*576) 25 fps/ch, NTSC(704*480) 30 fps/ch;

Resolution 960H: PAL (928*576) 25 fps/ch, NTSC (928*480) 30 fps/ch.

4. Audio compression: Compression arithmetic G.711A, Audio sampling rate 8K sample/sec., 16 bit/sample

5. Code stream type: VBR/CBR

6. Operation System: Linux

7. HDD interface: support 48bit LBA working mode

8. Alarm interface

Alarm input: Alarm input support normal on/off

Alarm output: Normal on, relay output

9. Serial interface: Support RS485 half-duplex, network transparent and COM control keyboard

10. Operation mode: multi-functional IR remote control, USB mouse, serial keyboard

11. Backup interface: USB2.0 interface

12. Network port: RJ45 10M/100M/1000M Ethernet Interface

13. Power supply: 220 \pm 30% V, 50 \pm 3% HZ, 110 \pm 20% V, 60 \pm 3% HZ



2.2 Main Functions

High effective RTOS and embedded processor are adopted in this series DVR, as well as all functions needed for the monitoring system are integrated. Code is solidified in the flash chip to keep the system in high stability and reliability. System can also work in a long time surveillance environment and even in stringent circumstance.

Note: The following features might differ from the below description since we have series products and different hardware and software versions.

◆ Compression features

1. Support PAL/NTSC video format signal.
2. Video compression algorithm is H.264.
3. Video and audio signals are compressed into H.264 code stream. Audio and video stream are synchronous when playback, and audio recording can be canceled if only video is in need.
4. Audio compression algorithm adopts G.711A, and every video/audio signal is compressed separately in real time, then generate composite compressed code stream. The video and audio stream are synchronous when playback, or setting disable audio with the sampling rate of 8K sample/sec., 16 bit/sample.
5. Supporting dual stream compression: main code stream used for local storing, sub code stream used for image transmission in low-bandwidth network.
6. 6 levels of record quality is available to select. Users can choose according to requirements so that the recording time is long enough.

◆ Recording function

1. Support 4 record modes: manual, schedule, motion and alarm recording.
2. Support 5 screenshot modes: manual screenshot; manual, schedule, motion and alarm snapshot.
3. Video motion detection function: multi detection areas can be set up to 5 sensitive levels.
4. Support screen shield. Each channel can max setting 4 mask areas, support preview mask, record mask and all mask.
5. Each channel support 4 interested area setting.
6. Support sensor alarm. One sensor can be linked to one or more cameras. Support alarm recall to PTZ preset point.
7. Monitoring center can record the real time compression code stream, and support synchronizing record video and audio into client PC.
8. Video and audio parameters of each camera can be set up separately.

9. Support channel title and recording time superpose.
10. Support multiplex operation, can real time recording without impacting other functions.
(such as playback, fast forward, slow playback, rewind, network monitor, VOD and remote)
11. Support pre-record feature, and pre-record time is 5-30 seconds.
12. Support record status inquiry function.

◆ Playback functions

1. Support inquiry recording files/pictures by time, fix position by time to record/pictures playback.
2. Support inquiry recording files/pictures by event, as per channel number/record type to inquiry/record/pictures playback.
3. Support intuitive video information graphical display and play.
4. Support zoom in on playback.
5. Support full realtime quick playback.
6. Support inquiry other time/channel recording files through list to playback.

◆ Real time surveillance features

1. Support HDMI, VGA, CVBS dual output with different source.
2. Support SPOT sequence output.
3. Support 1/4/8/9/13/16 ch preview, the order of channels can be adjusted and the time position in preview also adjustable.
4. Support 24Hour/12Hour mode switching.
5. Support DST.
6. Support zoom in.
7. Support mask some parts of area or all.
8. Support adjust video parameter (brightness, contrast, and saturation, hue) for each channel.
9. Support cruise.
10. Support intercom.
11. Support a variety of mainstream PTZ decoders control protocol, support preset point, PTZ preset point cruise and trajectory cruise.



User Manual

◆ Storing and backup functions

1. Support maximum 2 SATA HDD.
2. Support data lock/unlock/delete for all recording files/pictures.
3. The maximum saving time of recording files/pictures can be set, the DVR will auto delete the data which exceed the setting time.
4. Support set read-only/read-write to HDD.
5. Support HDD quota management, different channels can be arranged different quota for save data.
6. Support USB backup (USB disk or external USB burner).
7. Support backup by internal burner.
8. Support batch backup as per files.
9. Support clipping for backup while playback.
10. Support log backup.
11. Support backup record files by IE browser.
12. Powerful hard disk management function, support HDD dormancy and format, support the damaged partition shield, bad disk to eliminate and alarm mechanism.

◆ Alarm inspection functions

1. Local alarm: manual alarm, video lost alarm, motion detection alarm, sensor alarm, HDD faulty alarm, temperature alarm, network disconnect alarm, video shield alarm.
2. Video lost alarm, motion detection alarm, sensor detection alarm response on time.
3. Network alarm linkage (upload alarm signal), sound alarm through the PC own horn.
4. Video motion detection function, each channel can be set several detection area.
5. Support upload alarm information by email, send alarm channel/type/pictures to the assigned email.
6. Support motion detection and sensor detection jump to PTZ preset point.

◆ Network functions

1. Support TCP/IP protocol (support ARP, RARP, IP, TCP, PPPoE, DHCP, DDNS).
2. Support 3G and ADSL dial-up network connection, and support auto-redial after disconnect.
3. Perfect network-end control order (Client manager and IE browse can be used to control the DVR, such as setting the parameters, remote upgrade, etc).
4. Support composite channel preview through IE browser.

5. Support control PTZ/lens/wiper by network.
6. Firmware upgrade through network makes after sale service much easier.
7. Support FTP upgrade.
8. Support NTP timing.
9. Support DDNS.
10. Support alarm upload by email (video lost, motion detection, alarm detection).
11. Support mobile phone surveillance.
12. Support email test and DDNS test.

◆ Security guarantee

1. High quality 32 bits embedded microprocessor and embedded RTOS, which ensure the system's high-affectivity, reliability and stability.
2. Perfect log search function.
(such as sensor record log, motion detection record log, remote login log, record parameter modification log, update log, playback log, system start-up log, backup log)
3. System lock, keystroke lock, password verification, multi-level user authorization (using the username and password as encryption key of code stream when transmission).
4. Video lost alarm, motion detection alarm and sensor alarm can be informed by email.
5. Network alarm linkage (alarm signal can be uploaded).
6. Watchdog function. When the system is abnormal, watchdog automatically detects and reboots the system.

◆ Exploitation support

Client manager software and client management SDK.



Chapter 3 Equipment Installation and Illustration

3.1 Installation Environment and Cautions



Installation environment:

Normal working temperature is -10 ~ -55 . Storage temperature is -10 ~ -70 .

Normal working humidity is 15%-85%.

The equipment must keep horizontal either in installation or on using.

Avoid installing in high temperature or humidity conditions.

Heat release fans are placed for cool down, so you should put the device on ventilated place.

The back of Net DVR should be placed 6cm away from the other device or wall while installing.

Moving the Net DVR between two places with high difference in temperature will shorten the using life.

Please install the lightning conductor when the machine is used in frequent thunder areas.

The HDMI cable must be with magnetic ring.



Cautions:

Don't touch the power switch or the Net DVR by wet hands.

Make sure the machine and its case are grounded (There is an earth interface on the back panel of the machine).

Keep the power supplier stable to avoid abnormal power cut off.

Avoid dropping liquid or metal into machine that may cause short circuit or fire.

Don't record or playback until at least one HDD is installed.

Short circuit would happen when moist dust is on the board, so user has to termly brush the board and other accessories to make the machine work in good condition.

Video/audio/RS485 devices can't be plug or draw when the power is on, or else the equipment will be easily damaged.

Use the power on/off button on the front panel instead of direct shut off the power directly when turn off the Net DVR, so that the hard disk won't be damaged.

After installation, machine can automatically detect hard disk. If an unformatted hard disk is detected, system will give off information whether to format the disk (the dvr support format HDD, don't need operate in PC).

Warning: Don't try to plug in HDD to PC if not specialized persons, the following operation of HDD on PC will cause HDD can't be recognized and need format when plug in at next time: 1, modify or edit the file name. 2, open the file and edit the content. 3, copy back the data which copied out before to HDD again. 4, Some third party browser software will also change HDD physical storage location in the background.

Don't open the cover before power off.

In order to ensure the integrity of the video data, if found that HDD was damaged please promptly replaced (log has the record of HDD faulty).

3.1.1 Attentions on Installing Hard Disk

1. Recommend high speed hard disk above 7200 rpm.
2. The capacity of the single hard disk is above 32GB at least, each HDD can max support 3TB.
3. The selection and calculation for capacity:

Total capacity= channels number * record time needed (hours) * capacity per hour (M/hour)

For example: If you choose the recording bit rate type for CBR 2Mb (refer to 4.3 for bit rate types), the HDD Capacity /hour/channel=bit rate(Mbps) * 3600s=2Mbps*3600s=7200Mb, because 1MB=8Mb, so the data capacity of each channel/hour when choose CBR 2Mb is 7200Mb/8=900MB.

3600s=1800MB=225MB (1MB=8Mb). Due to the various factors, the calculated result is for reference only. Some slight differences or small errors might exist in the calculation.

Audio recording capacity is about 30MB per camera per hour. In order to save HDD space, we suggest closing the audio except users mandatory require audio recording.

Notes: When HDD is full, the default set will let system overwrite the earliest 1 day recorded files, please consider this situation when calculate the HDD capacity.

4. The attachments, such as data cable, power line, and hard disk are prepared well.

Notes: This series DVR don't support the hot swap, please install the HDD and connect the data line first then plug the electricity in.

3.2 Package Checking

After open the box, please check the DVR whether was distorted or damaged. If there have, please do not use it and contact your suppliers in time. Meanwhile, please check all accessories of the DVR; do read the attached information carefully. (Notes: Accessories as for the packing list)



3.3 Device Interface

3.3.1 Video/Audio Connection

Video output: 1 VGA output, 1 HDMI output, 1 composite video signal output.

Audio output cautions: connect sound box or MIC output.

3.3.2 USB Backup Interface

The U disk for backup should be FAT32 format. If you want to format the U disk, please enter the “HDD Management” to check it. (Specific operation please refer to “HDD Management”) The U disk backup operation please refer to “Backup Operation”.

3.3.3 Network Interface

There is a RJ45 10M/100M/1000M adaptive Ethernet interface which is used to connect the PC and the DVR.

The indicator lights ACT and LINK are used to indicate current network status.

LINK (Network speed indicator) green lights—1000M /100M off —10M

ACT (Send/Receive data indicator) Blink—Sending/Receiving data

3.3.4 Alarm Input/Output Connection

Alarm input: Input resistance: 22K , window contrast voltage (3.0V-4.18V).

(Note: There will be alarm when the voltage between 0V-3V or 4.18V-12V, and no alarm when the voltage between 3.0V-4.18V)

Alarm output: Relay (240VAC/7A, 125VAC/10A, 28VDC/10A), normal (relay open), alarm output (relay close).

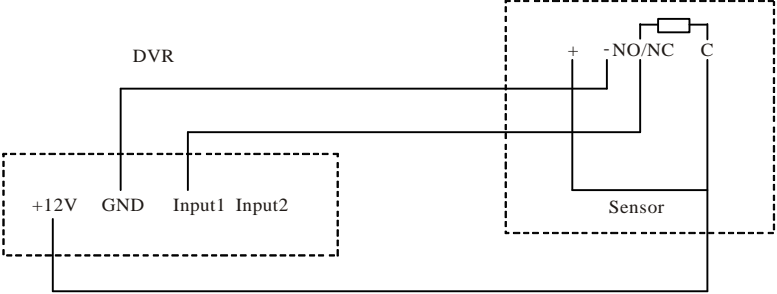
Sensor power: The machine provides a +12V DC power output port.

1. Alarm sensor connection:

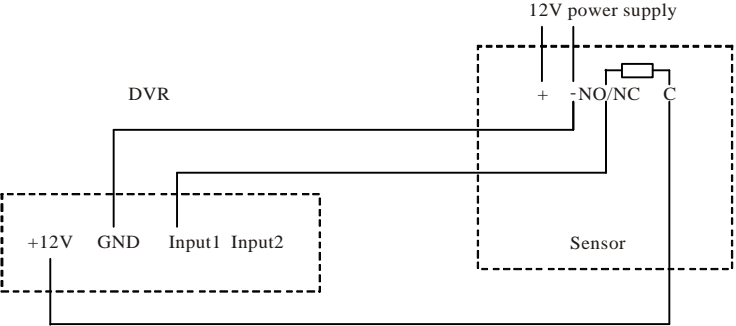
Alarm input: The physical connections of the normal on/off mode are the same. And user can select normal on/off mode in the DVR.

Note: The alarm input port which haven't used should be closed in the DVR.

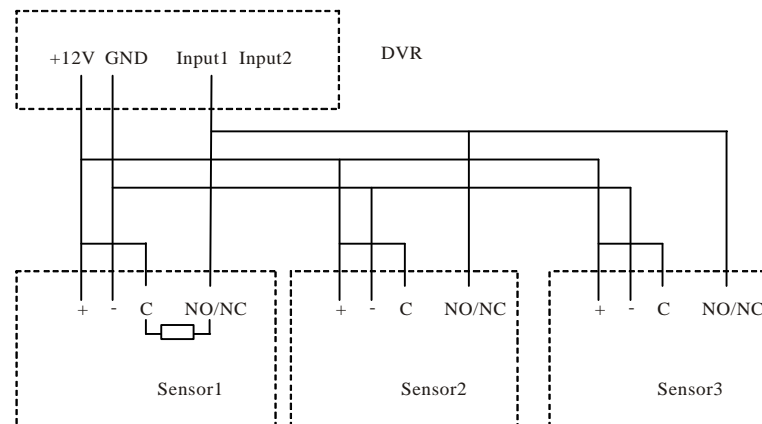
Typical alarm connection: the sensor power supply is provided by DVR. The fig is as follows:



If the distance between the probe and DVR is too far, the probe requires a separate power supply:
Please connect 2 side to ground if conditional when use separate power, otherwise long distance transmission maybe make false alarm.

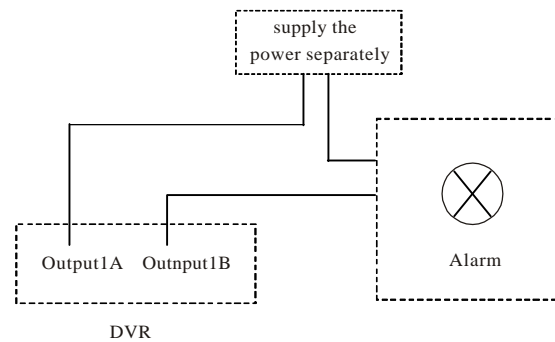


If we parallel connected the sensor, the DVR can not recognize the triggered sensor. User need to have a resistance.



2. Alarm output connection:

The alarm output side is normal-off and do not have voltage output. The other alarm equipments (loudspeaker, light, alerter) need the individual power supply.



Normally, Alarm's power usually is much bigger, preferably supply power separately, and do not use the DVR's power to supply.
Each series alarm output critical parameters are as follows: 240V/AC7A, 125V/AC10A, 28V/DC10A. Exceeding these parameters will damage the motherboard.



3.3.5 RS-485 Connection

Attentions for PTZ decoder connection:

1. Confirm that the PTZ decoder and Net DVR are one point ground connected, or common mode voltage might exist to cause the PTZ invalid.
2. Prevent high voltage inroad, carefully dispose connection cables secure thunder proof.

RS485: For PTZ control, serial keyboard and transparency port connection. (through network to control PTZ etc.)

3.3.6 Keyboard Controlling

If you want to unify control more than one DVR, you have to use the series keyboard (we suggest user using one series keyboard to control more than one DVR in the same model). The function of the keyboard is the same with the front panel of DVR. (Note: the keyboard must be added with the protocol from our company and go through the test of our company).

Take the RS485 interface series keyboard for example:

1. "Main Menu" -> "System Setup" -> "COM", to setup the COM number and COM device (series keyboard).
2. Connect between RS485+ of the keyboard and RX+ of the DVR, also RS485- of the keyboard and RX- of the DVR.
3. Connect with the power supplier.
4. Choose the "Switch" key to change mode to DVR mode, the default is "DVR-01", "01" is address code of keyboard.
5. Address code of keyboard: choose the "shift" key to enable the up key of the keyboard, then click "address/enter" to input the host address code, then you can control the DVRs.


Note: The detail set of keyboard can refer to the user manual of keyboard.



3.3.7 Intercommunication Port






There is a "MIC" port on the back panel, support the active or passive microphone.

3.4 Front Panel Description

S.N	Name	Mark	Note
1 (Power)	On/Off		Turn on/off DVR.
2 (Number/Letter)	Number/Letter 0-9/A-Z		<ol style="list-style-type: none"> For video channel shift, 1-8 number corresponds to CH1-CH8. The number keys are used for switch channels when playback mode. When setting parameters, select number and English letter input.
3 (Function keys)	*/Preset		It means preset when in the PTZ control status.
	#/Call		It means call when in the PTZ control status.
	PTZ		Press the PTZ key, when light on, it's in PTZ control, press again to cancel the PTZ control.
	Login/Lock (Auto)		<ol style="list-style-type: none"> Be used to login or lock system. It means auto when in the PTZ control status.
	Shift (Zoom+)		<ol style="list-style-type: none"> Shift real time display. It means "zoom+" when in PTZ control status.

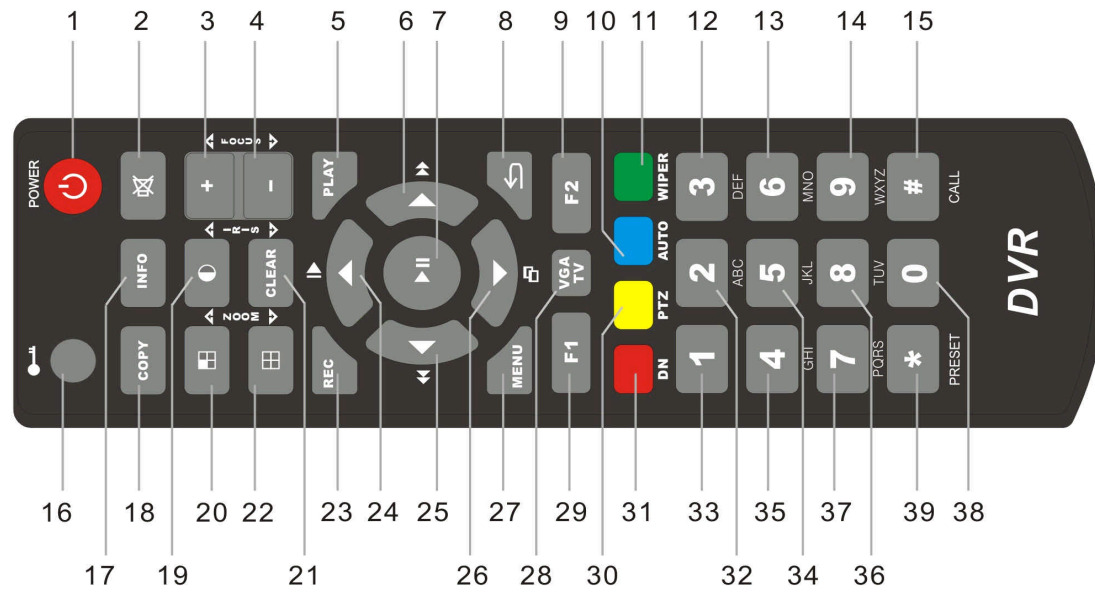


3 (Function keys)	Format (Zoom-)		1. Shift between single and multi channel video when in real time display. 2. It means “zoom-” when in PTZ control status.
	Image (Iris)		1. Set parameters of each channel, without menu state is valid. 2. It means “iris+” when in PTZ control status.
	Clear (Iris-)		1. Edit cancel. 2. Alarm clear. 3. It means “iris -” when in PTZ control status.
	Page up (Focus+)		1. The drop-down menu option switch. 2. It means “focus+” when in PTZ control status.
	Page down (Focus-)		1. The drop-down menu option switch. 2. It means “focus -” when in PTZ control status.
	Return (Wiper)		1. Exit and return to the up menu. 2. It means wiper when in PTZ control status.
4 (Shortcut key for menu)	Rec.		Enter the manual record rapidly in without menu status.
	Playback		Enter the playback rapidly in without menu status.
	Backup		Enter the backup rapidly in without menu status.
	Information		Enter the system info. rapidly in without menu status.
	Menu		Enter the main menu rapidly in without menu status.

5 (Indication lamp area)	POWER		While supply power to DVR and the system running, this lamp will be lighted. When power supplier cut off, this lamp will be off.
	HDD		Hard disk indication: It's light when the hard disk is working or it's off.
	IR		IR remote controller indication lamp, it's light when you use the IR remote controller.
	ALARM		Alarm indication lamp: it's light when there is alarm or it's off.
	LOCK		Lock indication lamp: it's light while the remote controller is lock.
	NETWORK		Network indication lamp: it's light while the network is connected.
	PTZ		PTZ indication: It's light while entering PTZ controlling status, or it's off.
6 (Direction key)	UP/Slow play		1. Cursor move; 2. Slow play; 3. It means up while in PTZ control.
	Down/Frame on		1. Cursor move; 2. Frame on; 3. It means down while in PTZ control.
	Left/FB		1. Cursor move; 2. FB; 3. It means left while in PTZ control.
	Right/FF		1. Cursor move; 2. FF; 3. It means right while in PTZ control.
	OK/Play/Pause		1. Confirm select; 2. Play/Pause.
	Shuttle turn left and turn right		1. Cursor move; 2. Turn left means FB, turn right means FF while in playback status.



3.5 IR Remote Controller Operation



Keystroke instruction		
1. Power	14. 9WXYZ	27. Menu
2. Mute	15. CALL	28. VGA/TV
3. +, Focus+	16. Log in/Log off	29. F1
4. -, Focus-	17. Information	30. PTZ
5. Playback	18. Backup	31. Server Index
6. Right/Fast Forward	19. Image/Iris+	32. 2ABC
7. OK, Play/Pause	20. Shift/Zoom+	33. 1
8. Return	21. Clear/Iris-	34. 5JKL
9. F2	22. Format/Zoom-	35. 4GHI
10. Auto	23. Record	36. 8TUV
11. Wiper	24. Up, Slow Motion	37. 7PQRS
12. 3DEF	25. Left, Backward	38. 0
13. 6MNO	26. Down, Frame Forward	39. *, Preset

(Note: F1 and F2 are preserved functional keys.)



3.6 Mouse Operation

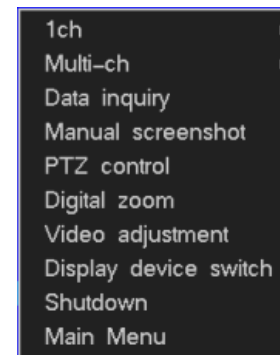
Besides front panel and remote controller, mouse also can be used to control the DVR'System.

Right click the mouse:

1. If the system is in login status, right click the mouse, then shortcut menu will display as right picture:
2. If DVR is locked and in real time monitor status, the login menu will pop out when right click the mouse. The system default setting user name is "admin", and password is 888888 (Left click mouse to open soft keyboard. Right click mouse in blank area to close soft keyboard after finish inputting).
3. Once entering the menu, right click the mouse, it will let you exit the current interface and back to the former menu or exit the main menu. (right click mouse has same function with close when have menu)
4. If have soft keyboard in login interface, right click mouse on soft keyboard after input, the soft keyboard will be disappeared.

Left click the mouse:

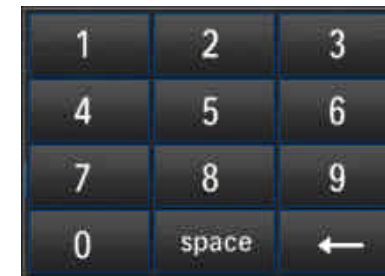
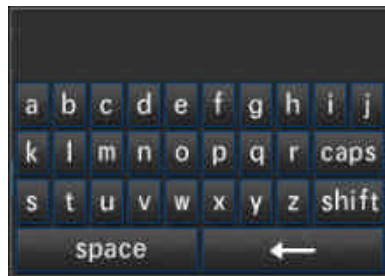
1. Left click the mouse, and you will enter the functional menu.
2. In the main menu, left click the close icon at the right up corner to close the menu and return to the up one level.
3. In the main menu, left click to access or set up the parameters.
4. When selecting the motion detection setup, left click the mouse to change the status of the motion detection square unit.
5. To set up the video images parameters, you can change the brightness, contrast, saturation, hue of the image by left click the mouse on a certain point you prefer.
6. For input box, left click to enable the soft keyboard (the default is english character soft keyboard, click the Caps to shift the case), continuous click the icon of the right of input box can switch to different soft keyboard (number, symbol, English character), mean can input number, character, symbol, clear, space, enter etc.
7. In split-screen format preview, long press the mouse left key and drag the channel to other channel position then loosen to change the channel display position.
8. In real time preview, long press the mouse left key and drag the time to the needed position then loosen to change the time display position.



Double left click the mouse:

1. Double left click in preview can switch single channel and multi channel.
2. Double click the mouse can clear the mask area and motion area.
3. After callout the PTZ control interface, double click the mouse to move the PTZ control interface to pointing place.

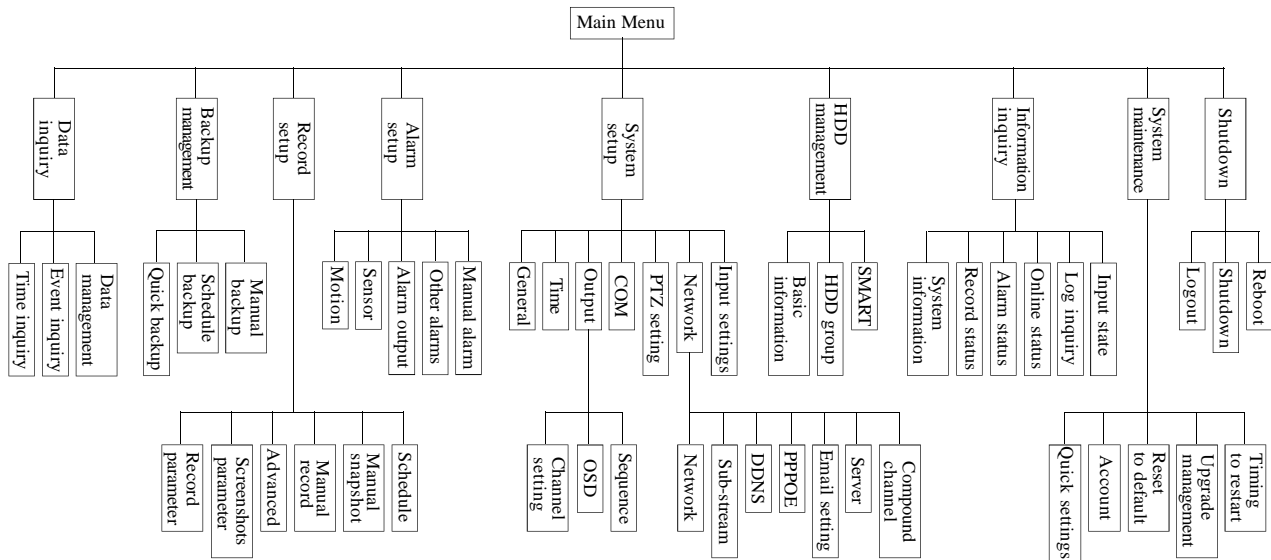
Soft keyboard interface as below:





3.7 Menu Operation Description

3.7.1 Menu Structure Chart



3.7.2 Menu Option Schedule

Menu	Instruction	
Data Inquiry	Time Inquiry	Query the record/pictures by time, and with video data graphical display to precise playback.
	Event Inquiry	Query and playback by event type of record/pictures.
	Data Management	Lock/unlock/delete the files.
Backup Management	Backup/inquiry/playback for record/pictures (quick, schedule, manual).	
Record Setup	Record Parameter	<ol style="list-style-type: none"> 1. Record mode: all, manual, schedule, motion detection and alarm record; 2. Bitrate type: VBR, CBR; 3. Definition: FD1, CIF; 4. Image quality: 6 level (highest, higher, high, middle, low, lowest); 5. Frame rate: 2-25 fps adjustable; 6. Bitrate: 512K, 768K, 1M, 1.5M, 2M, 3M, 4M (FD1); 100K, 256K, 512K, 768K, 1M (FD1); 7. Audio: enable indicate record audio, unable indicate don't record audio, the digital audio and analog audio can be chose; 8. Pre-record time (5-30S), delay record time (0-180S).
	Screenshots Parameter	<ol style="list-style-type: none"> 1. Screenshot type: manual, schedule, motion, Alarm; 2. Definition: FD1, CIF; 3. Image quality: 6 level (highest, higher, high, middle, low, lowest);



Record Setup	Screenshots Parameter	4. Screenshot period: 1-5S, screenshot Number: 1 pcs (schedule, motion, alarm); 5. Enable the screenshot (schedule, motion, alarm).
	Advanced	1. Overwrite: auto, manual; 2. Maximum days of record saving: 1 week, 1 month, 1 year, Unlimited; 3. Maximum days of pictures saving: 1 week, 1 month, 1 year, Unlimited.
	Manual Record	Enable manual record.
	Manual Screenshot	Enable manual screenshot.
	Schedule Record	Enable schedule record. set the record deployment time period, channel copy function.
Alarm Setup	Motion	1. Motion detect sensitivity: 1-5 level (5 is the highest); 2. Set motion detection area, time, channel copy function; 3. Linkage setting: triggered record, screenshot linkage, alarm output, email linkage, PTZ preset point.
	Sensor	1. Sensor type: normal on/off; 2. Sensor number, deployment time, channel copy function; 3. Linkage setting: triggered record, screenshot linkage, alarm output, email linkage, PTZ preset point.
	Alarm Output	1. Alarm during time, audio, buzzer, full screen; 2. Deployment time of output alarm.
	Other Alarms	1. Alarm type: HDD faulty, video lost, network disconnect, over temperature, video shield; 2. Alarm linkage: alarm output, email linkage.
	Manual Alarm	Test alarm output by manual, trigger alarm or close alarm but manual when happen urgent things.

System Setup	General Setting	1. Host name, Open remote control lock, Host id; 2. Video standard: PAL/NTSC; 3. Resolution: 1024*768, 1280*1024, 1440*900, 1920*1080; 4. Language: English; 5. Display device: VGA/CVBS; 6. Auto lock: 1-10 minutes can be chose or close; 7. Audio device: microphone, sound pick-up; 8. Choose device when booting up; 9. Display power on wizzard.		
	Time Setting	1. Time setting: edit the time by manual, Time mode switching (12hour mode/24hour mode) and DST setting; 2. NTP: update the time by manual/auto through network and NTP server.		
	Output Setting	Channel setting	1. Set the channel name; 2. Set video mask area and special area; 3. Video adjustment: Brightness, Contrast, Saturation, Hue; 4. Set the channel name position of each channel; 5. Channel copy function.	
		OSD	Date format setup, time, channel name, temperature display position.	
		Sequence Setting	Sequence cruise channels, polling interval, sequence cruise type.	
		SPOT Setting	Enable sequence, set sequence cycle and sequence channel etc.	
COM Setting	COM number, COM device, Baudrate, Date bit, Stop bit, Parity bit, stream control, ATM protocol.			



System Setup	PTZ Setting	PTZ protocol, address code, channel copy function.	
	Network Setting	Network Setting	DHCP, IP address, reserve IP setting, port setting, multicast setting.
		Sub-Stream	<ol style="list-style-type: none"> 1. Record type: all, manual, schedule, motion, alarm; 2. Code stream type: VBR, CBR; 3. Definition: CIF, QCIF; 4. Image quality: 6 level (highest, higher, high, middle, low, lowest); 5. Frame rate: 2-25 fps adjustable; 6. Code rate: 100K, 256K, 512K, 768K, 1M (CIF); 45K, 60K, 90K, 128K, 256K (QCIF); 7. Audio: enable indicate audio is available when network transmission, otherwise don't have audio when network transmission.
		DDNS	Choose DDNS server, set user name and password for analysis, DDNS test.
		PPPOE	Set user name and password for PPPOE or 3G dial up.
		Email Setting	Set server, sender name, password, sender address, receiver address, port, Email test.
		Platform Server	Platform server reserved function.
		Compound Channel	Enable the compound channel and set the parameter.
		Input Settings	Inputting resolution, channel copy function.
HDD Management	Basic Info.	Display status and information of each HDD/USB/burner, format the HDD/log , try to use HDD and set attribution.	

HDD Management	HDD Group	Set the HDD and record channel belong to different group, display the HDD total capacity, free capacity, record time.
	SMART	Query the HDD model, serial number, firmware version, temperature, health status and SMART attribution.
Information Inquiry	System Information	Query and display the device model, software version, SCM version, IP address, MAC address, language, resolution.
	Record Status	Display the record status of each channel (record type, image quality, definition, audio, Code rate).
	Alarm Status	Display the alarm status of each channel (sensor alarm, motion alarm, video loss, video shield), HDD alarm, network disconnect alarm, temperature alarm and alarm clear.
	Online Status	Display the device online information (online user, login IP, login time).
	Log Inquiry	Inquiry the system log, display the log quantity and backup log.
	Input State	Display the audio/video source type (video/audio status).
System Maintenance	Quick Settings	Quick set time, network setting, HDD information inquiry and format, local code stream and network stream, manual record.
	User Management	1. Add new user, delete user/group; 2. Change local/remote user account and authority. Support remote user authorities: remote preview, parameter setup, remote playback, remote backup, log inquiry, voice talk, remote upgrade, user binding IP and MAC address.
	Reset To Default	To default setting: general setting, output setting, coding parameter, schedule record, alarm setting , network setting, COM setting, timing restart, PTZ setting.
	Upgrade Management	FTP Upgrade, USB Upgrade.
	Schedule Restart	Enable system schedule function to set the restart time.



Shutdown	Logout	Logout.
	Shutdown	Shutdown (please press the power switch on front panel when use this option to shutdown).
	Reboot	Reboot at local.
Right key menu	Single channel shift	Quick shift to single channel
	Multi channel shift	Quick shift the format of channel, for example: set the 4/8 split screen mode
	Data inquiry	Quick access data inquiry (time inquiry, event inquiry) record/pictures graphical display, playback and data management
	Manual screenshot	Screenshot instantly
	PTZ control	Call PTZ control interface
	Area zoom in	Quick access the zoom in setting interface in real time preview
	Display device switch	Quick switch VGA/CVBS output
	Video adjustment	Video parameter adjustment (brightness, contrast, saturation, Hue)
	Shutdown	Shutdown (please press the power switch on front panel when use this option to shutdown)
Main menu	Quick access the main menu	

Chapter 4 Device Operation

4.1 Power On/off and Login /Lock

Power on: After connected up the power cable, the front panel of the DVR will start and enter the standby state. Click the “Power” button on the remote controller for 3 seconds to enter the running state.

Power off: When the system is under the running state, click “Power” button on the remote controller to popup the shut down interface. And clicked the “Confirm” button, the system will enter the standby state.




Login/Lock: To avoid unauthorized user using the machine or influencing the system’s normal working, we specially set the key lock and unlock function for the machine.

4.1.1 Keystroke Unlock/Lock

When multi DVRs are put to work together, using the remote controller may influence the machines which users do not intend to control. So we set system key lock function correspond to remote control. Under the system management of DVR main menu, please enter series configuration and setup device number, then enable key lock and save it. Now to press the DN button on the remote controller, the DVR is locked, and you will see the “LOCK” light on the front panel is on. To unlock the DVR, please press the DN button and input the corresponding DVR device number (Device number range is 0-99, default set is 1).

Note: If the remote control does not respond, please check if this function is enabled.

4.1.2 System Login

When the system is in the status of locking “”, press the “Login/Lock” on the remote controller or right click the mouse, the figure of login will appear as follows right: Input user name and password on the login port (distribute in authority in advance), after you input correct user name and password and press “ENTER”, the sign “” on the lower left corner will switch to “” automatically, and show the current user name. Then you can carry on the operations in the authority to the system at the moment.

1. Default user: admin; default password: 888888.
2. When you input the incorrect password 3 times continuously, the system will alarm and get into the status of locking automatically. In that case, you need to click the “clear” on the front panel or remote controller to retype the password.

||||| User Manual

3. To input name and password, you can left click mouse. It will pop out software keyboard. Right click mouse to exit.

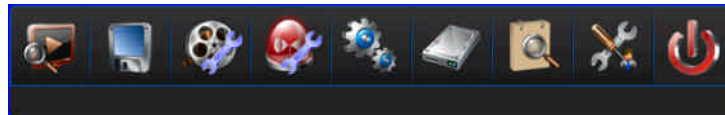
Note: For the sake of safety, please change the default password immediately.

4.1.3 System Lock

When the system is in login status, user continuous left click the mouse, through “Main Menu” -> “System Setup” -> “General” to access general setting interface, set the lock function and time in combobox, if there is no operation in the automatic locking time (system default is 3 minutes), the system will automatically lock. You can also press “login/lock” on the remote controller or front panel or click the icon “👤” in status bar to manual lock the system.

4.1.4 Main Menu

After user log in successfully, and click the “MENU” on the remote controller or the front panel, or click the icon “🏠” in status bar, or right click the mouse and choose the “Main Menu” to access the main menu (interface as below); the main menu from left to right is: data inquiry, backup management, record setup, alarm setup, system setup, HDD management, Information inquiry, system maintenance, and logout/shutdown/reboot.



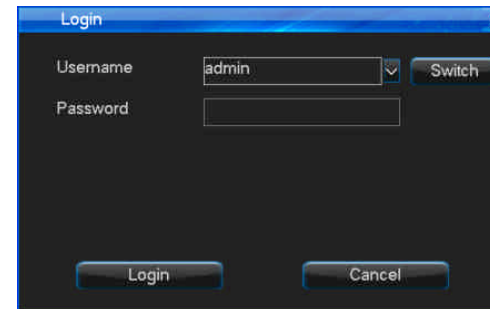
4.1.5 Status Bar

When DVR boot, the status bar at bottom of screen display as below picture:

Operation as below:



1. Menu icon: Single click “🏠” in login status to access the main menu.



2. System login/lock icon: Single click "🔒" to access host after booting, single click "👤" to lock the host.
3. Alarm status icon: Single click "🚨" to access "alarm status" to query alarm information and clear alarm voice.
4. Audio icon: Single click "🔊" to enable or unable voice.
5. Channel preview order adjust icon: Single click "📺" to adjust the order of preview channels.
6. Display/hide status bar: Single click "hide" to hide the status bar, move mouse point to the bottom of interface and single click "display" to display the status bar.
7. Quick playback icon: Single click icon "⏮" to quick playback the before 5 minutes record.

4.2 Power on Wizzard

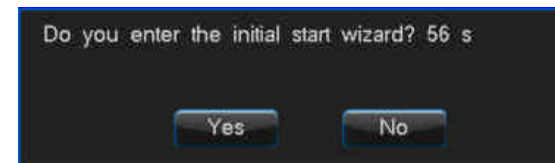
After device boot, you can do simple configuration through power on wizzard to make DVR working normal and the interface as below:

Setting method: access "System Setup" -> "General", then choose the "Display power on wizzard" and save, next time boot will prompt whether access power on wizzard.

Note: please confirm the HDD has connected with SATA port before use initial start wizard.

The simple configuration in power on wizzard as below:

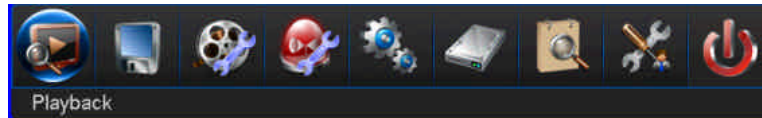
1. Ensure whether access the power on wizzard, choose "Yes" to access.
 2. Authority filter, input the password (the default is 888888).
 3. System time setting, click save after set finish and choose "Next".
 4. Network setting, you can set the IP, gateway, DNS, command port, HTTP port; click "Save" after set finish and choose "Next".
 5. HDD management, choose the HDD number which you want format then click "Format", after pop-up "Are you sure to format HDD?", click "Yes" to format the HDD, after finish choose "Next".
- Note: if you choose "Format log" and choose the 1st HDD in list when format HDD, then the log can be formatted, otherwise the log can't be formatted.
6. Input settings, set the definition of input. If parameters of other channels are the same, you can click "Copy" to copy the parameter setting to other channels. Then click "Save" button to continue.
 7. Coding parameter, click "Save" after set the local stream and network stream, if other channels have same setting, choose "Copy" to access, then choose which channel need copy, click "Save" then choose "Next".
 8. Record setting, choose the channel which you want enable manual record, click "Save" then choose "Finish" to exit power start wizzard.





4.3 Data Inquiry and Playback

Enter the playback interface by press “Play” on the remote controller and right directional button to choose the “Data inquiry” or choose the “Playback” from main menu (as below picture), confirm and access the inquiry interface.



4.3.1 Time Inquiry

In “Time Inquiry” interface, click calendar date or input the date which you want query then click “Inquiry” button, you can view graphical record/image information and the interface as bellows:

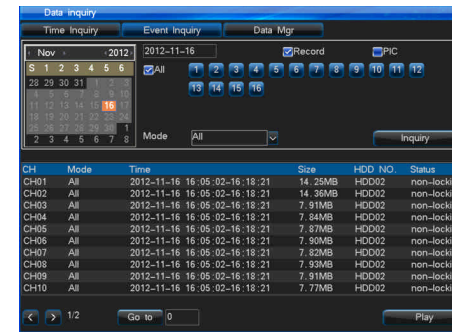
- Choose data type: record or pictures.
- Choose the channel for inquiry.
- Click the graphical interface (white vertical line position also is video playback start time) or input accurate time and choose “Play” to play video.
- Double click the graphical interface to playback, white vertical line position also is video playback start time.
- If the date show green color mean that this day have video data or picture data, grey mean not.
- “green” is manual record, “blue” is schedule record, “yellow” is motion record, “red” is alarm record. (pictures status is same with record)
- Each page maximum show 8 channels record information, click last page or next page to query other channels.

4.3.2 Event Inquiry

In “Event Inquiry” interface, according to choose channel and record type to query record/pictures, the interface as bellows:

- Choose data type: record or pictures.
- Choose the channel for inquiry.

- Choose the record type in combobox.
- Use mouse to choose the data then click “Play” to playback or double click the data by mouse to playback.
- Click last page or next page for page turning.



Playback Interface Functions:

- Playback: the channel quantity for playback decided by DVR specification.
- In playback process, right click the mouse to display or hide the playback control box.
- Support zoom in by mouse in playback, the method is: enter playback interface and select partial zoom, left drag in the channel interface and select zoom area then release the mouse to realize the partial zoom; Right click to cancel the zoom area, right click again to exit zoom interface.
- In playback process, support clip the interested data and use U-disk or other device for backup, support AVI and DAT backup, the operation method is:

1. Play the record data.

2. Choose the needed record.

A. Click the clip icon to choose the start time, as right picture:

B. Click the clip icon again to choose the end time.



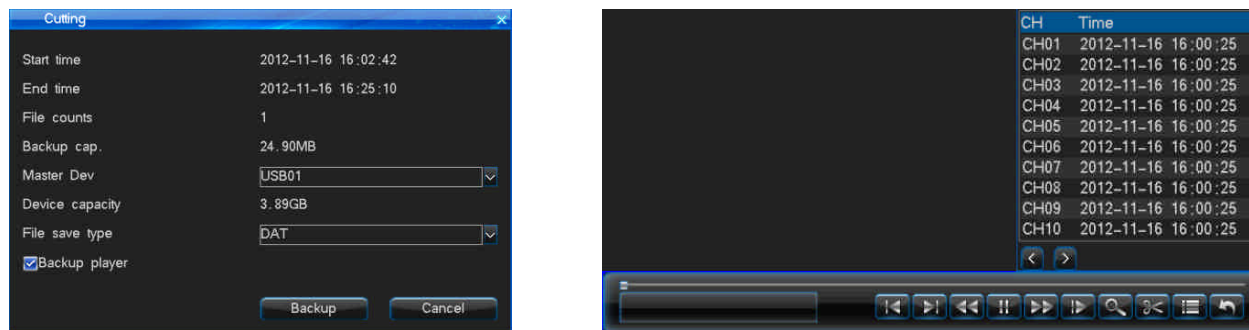
|||| User Manual

3. Auto pop-up clip and backup window, as the left picture:
4. Set the parameter (save device, file saved type, backup player), then click backup icon, wait for backup finish.

Note: AVI data don't support inquiry and playback in DVR, use the media player to play in PC.

DAT data support inquiry and playback in "Backup Management", but please use the Hanbang special player to play in PC.

- In playback process, click the list icon in player to play the other time data or other channel data. The interface as the right picture.



Picture playback interface function, as below picture:



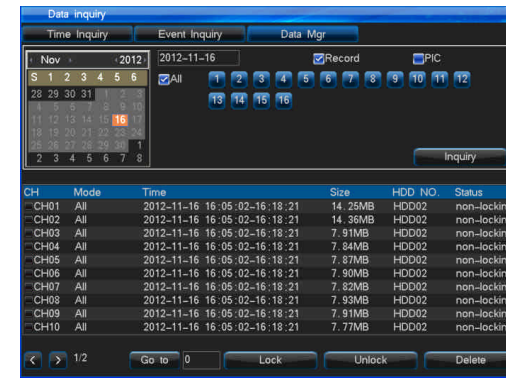
- Support single channel or multi channel picture playback.
- Support Split-screen format playback: When playback single channel picture, click the split-screen format icon in player can shift to 1/4 and do multi pictures playback.
- Auto playback: Click the time icon in player can play the pictures as interval 5S/10S/15S.
- Manual playback: Click the manual playback icon in player to play the last or next picture. one by one to continuous play.

4.3.3 Data Management

You can lock, unlock or delete the files in “Data Management”, the interface as the right picture:

- Choose the data type: record or picture.
- Choose the channel for inquiry.
- Use mouse to select data for lock, unlock and delete.

Note: Only when data in unlock status can do lock or delete operation, the recording file which is in recording process can't be deleted, when data is in lock status only can be unlocked, can't be deleted.



4.4 Backup Management

There are 3 ways for the system to backup:

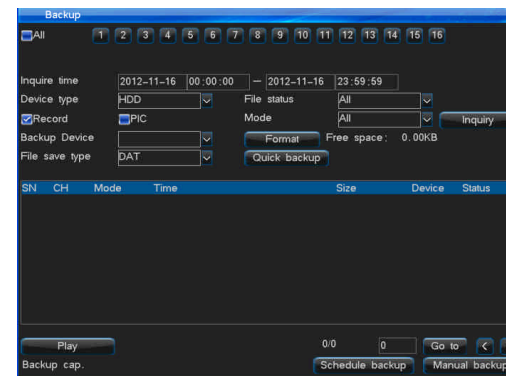
1. Backup to remote PC via network (refer to client instruction).
2. USB disk backup, supporting hot plug, the format of backup disk must be FAT32.
3. Support external USB burner backup record.

“Main Menu” -> “Backup Management” to enter the interface as the right picture:

- Backup channel: Choose the channel for backup.
- Inquiry time: Input the time period for backup, support maximum 1 month for inquiry.
- Device type: Choose the different device type to query the local HDD saving data or backup data of every devices.
- File status: Lock or unlock.
- Data type: Record or picture.
- Type: Choose the record type for backup.
- Backup device: Choose the backup saving device.
- File saved type: Support record saved as DAT, AVI, pictures saved as DAT, JPEG.

Note: 1, Before backup or query the data of backup device, you must choose file saved type.

- 2, The backup data playback in DVR don't support other type of files except DAT.



4.4.1 Quick Backup

1. In backup management interface, click “Quick backup” after choose the backup channel, file status, select record/picture and type.

2. Then a message of “Are you sure to backup” will pop out. Select “Yes” for backup, till all of the file backup is complete.

Note: Quick backup is backup all data what queried.

4.4.2 Manual Backup

● Operations method as below:

1. Choose the backup channel, file status, select record/picture, type, then click “Inquiry”.

2. Select backup files, choose “Manual backup” to access backup interface.

3. Then a prompt “Are you sure to backup?” pop-up, choose “Yes” for backup, till all files backup finish.

4. If record is available then can backup, don’t need wait.

5. If you want make sure about the backup file, you can choose the file and click “Play” to play it.

Note: Left bottom “Backup capacity” is the total capacity of record files you chose.

● Backup file playback

1. In backup management interface, choose the backup device, then click “Inquiry”.

2. If you want make sure about the backup file, you can choose the file and click “Play” to play it.

Note: Backup file only support single channel playback, the progress bar can’t drag when play the backup files.

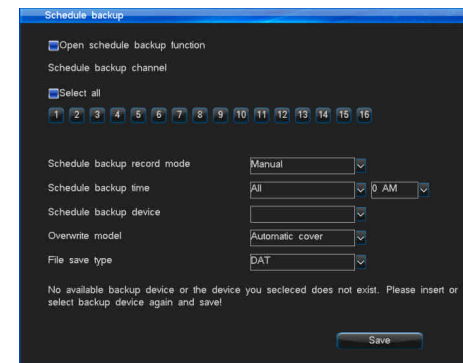
When backup DAT format record files also backup player at same time, AVI format backup files can play on PC directly through double click.

4.4.3 Schedule Backup

Click “Schedule” in Backup Management interface to enter schedule backup interface as the right picture:

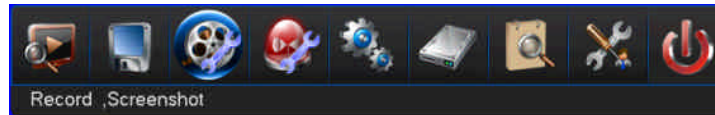
Settings include: enable schedule backup function, selecting schedule backup channel, record mode, schedule backup time, backup device, overwrite model, file saved type, When the settings are save, the machine will automatically backup by the moment.

Caution: Backup time is not able to exceed 1 month. If the time of schedule backup is the same with the time of schedule restart, the latter owns higher priority



4.5 Record Setup

Record setting menu as right picture:



4.5.1 Record Parameter

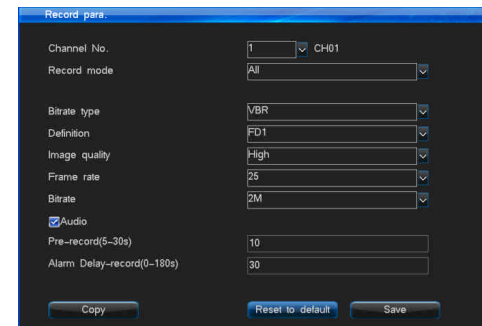
Before using the record function, it is important to set the record parameters. It is related to video playback and hard disk capacity, etc. After login, select “Record Setup” -> “Record Parameter” to enter the interface as the right picture:

- Channel No.: Customer can select the channel by pressing “+”, “-” on remote controller or by the mouse.
- Record type: The record parameters will be active in the selected record mode.
- Encoding stream type: VBR and CBR.

VBR: It means when compress the video signal, system can adjust the compression bite rate dynamically according to the changing of the image source. Thus, when recording, system maximally saves HDD capacity, and for net transmission, the bandwidth is also maximally utilized.

CBR: The compression bit rate keeps constant even when image source changes. The characteristic for CBR is in limited bitrate to have good compression images, as well as easy to estimate the HDD occupation and network bandwidth.

- Definition: FD1/CIF (960H/Q960H).
- Video quality: There are 6 levels of video quality. (highest, higher, high, middle, low, and lowest)
- Frame rate: 2-25 fps.
- Bitrate: When compressing fast-moving images, we need do a limit of compression bit rate upper limit. They are: FD1 (960H) is 512K, 768K, 1M, 1.5M, 2M, 3M, 4M. CIF (Q960H) is 100K, 256K, 512K, 768K, 1M.
- Audio: Tick off indicates open, otherwise means off, also can set digital or analog audio.
- Pre-record time: The 4 record modes support Pre-record function, default pre-record time is 10s, range is 5-30s. Due to the variable bit rate, the actual pre-record time may have some difference with what your set.
- Delay record time: The record duration time when the motion/sensor alarm appears, default duration time is 30s, range is 0-180s.
- If other channel setting are the same, click “Copy” button to enter copy interface, then select the channel which want copy. Click “Save” button.



4.5.2 Screenshots Parameter

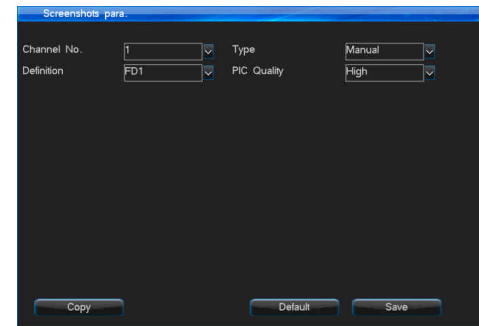
Before using DVR snapshot function, please set the snapshots parameters. It will be related to picture playback effect, snapshot interval and the picture size.

Enter “Main Menu” -> “Record Setup” -> “Screenshot Para.” interface as the right picture:

- Channel No.: Select the channel which you want to set.
- Snapshot type: The snapshot parameters will be active in the selected snapshot type.
- Resolution: Support FD1/CIF (960H/Q960H).
- Image quality: Image quality have 6 levels: Highest, Higher, High, Middle, Low, Lowest.
- Snapshot cycle: Can set 1-5 seconds. ● Snapshot pics: 1.

Snapshot type explaining:

- Manual screenshot in channel preview image: Right click mouse in channel preview image, select “Manual Screenshot” item, then you will snapshot a picture manually.
- Manual snapshot by system: If you open manual snapshot parameter at one certain time, the system will snapshot until you close the manual snapshot at some certain time.
- Schedule Snapshot: The system will snapshot in a regular time period. Max can set 6 time periods.
- Motion snapshot: Enable “Motion snapshot”. The system will snapshot only when it detect there have motion event.
- Alarm snapshot: Enable “Alarm snapshot”. The system will snapshot only when it detect there have alarm event.

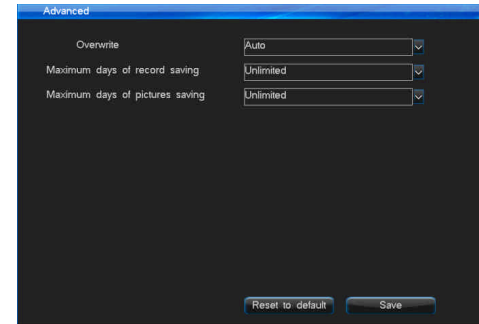


4.5.3 Advanced

Enter “Main Menu” -> “Record Setup” -> “Advanced” interface as the right picture:

- Record overwrite: Suggest that you can select “Auto”. When HDD is full, it will auto overwrite the oldest record file. When record overwrite happens, the HDD free capacity is 0%. “Manual” type is when the HDD is full, the system will show message that if you want to overwrite the oldest record and the same time the system will stop recording until you agree with the message.
- Maximum days of record/pictures saving: Default is “Unlimited”. If you set max saving days, the data which is beyond the saving days will be deleted. For example: If you set max saving days is 1 week, when system time is 8th day, then the record before 1st day will be deleted.

Note: The record file which was set as “Locked” or “Read-Only” cannot be deleted or overwrote.



4.5.4 Manual Record

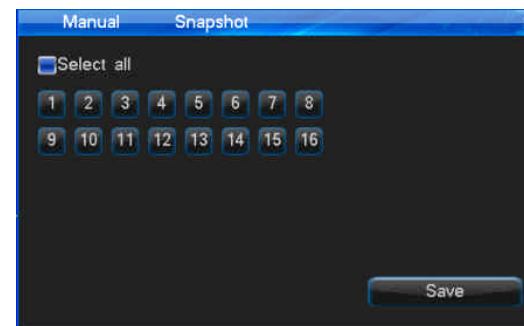
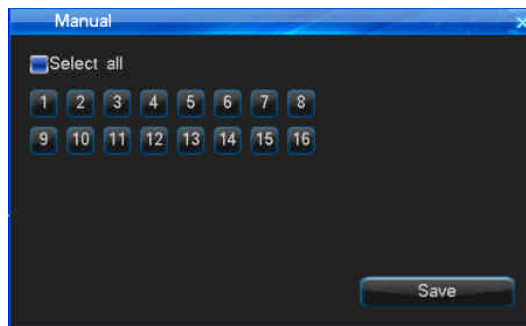
Manul Record interface is as follows:

- When enable manual record, the color of channel button is blue. Disable is gray color.
 - If you open manual record, it will manual record all the time until you manual close it.
- If the power supply was cut off, after it have power supply again, it will continue to manual record.

There has two way to open Manual Record.

Method 1: Press "Record" button in remote controller to enter setting interface, then choose the manual record channel.

Method 2: Enter "Main Menu" -> "Record Setup" -> "Manul Record" interface to set the setting.



4.5.5 Manual Snapshot

Enter "Manu Menu" -> "Record Setup" -> "Manul Snapshot" interface as the right figure above:

- Enable manual snapshot, the channel button color is blue. Disable is gray color.
 - If you open manual snapshot, it will manual snapshot all the time until you manual close it.
- If the power supply was cut off, after it have power supply again, it will continue to manual snapshot.

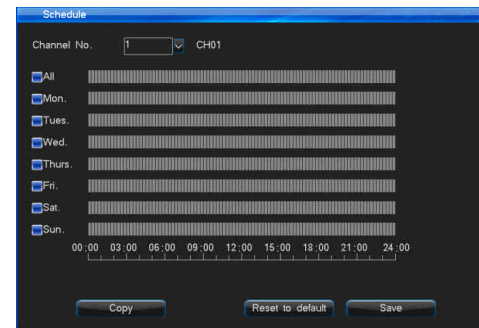
Note: Please set the snapshot parameters before using manual record function.

||||| User Manual

4.5.6 Schedule Record

Follow below steps to enter Schedule Record interface:

1. Select the corresponding channel No..
2. Deployment time: choose the record date for setting, can be everyday or a certain day (multiple choices). Time range setting: choose the time range of record, can be set multiple range in one day, the setting of time according to the time order. Select the date through the mouse left key then set the time to take effect, drag the mouse left key to set the time range, also can be set by remote controller or double click mouse (put the pointer of remote controller at the time bar and press the enter key or double click the time bar), you can set 6 time range (note: the default time display is multiples of 15).
3. Click "Save" to activate the settings, you can also duplicate the settings to other channels.



4.6 Alarm Setup

"Alarm Setup" interface is as right:



4.6.1 Motion

Enter "Motion detection" interface by "Main Menu" -> "Alarm Setup" -> "Motion" as below:

You can judge if the scene have any changes by checking the realtime record. If you want to record when there have someone or something moving in channel scene, you can set "Motion Detection" to record. User can set motion alarm record time, deploy time, sensitivity, motion detection area and alarm output channel.

Motion detection operation steps:

Step1: Enter "Main Menu" -> "Record Setup" -> "Record para." interface to set corresponding channel pre-record time and delay-record time.

Step2: Select the channel number which you want to motion record.

Step3: Define the motion detection sensitivity level: There have 5 levels: 1(lowest level)~5(Highest level). When the system detect that have motion in the scene, it will alarm and motion record. If you choose low sensitivity, such as 1, it will alarm only when there has big change in the channel scene. If choose 5, if there have little change in the channel scene, it will motion alarm.

Step4: Detection area setting: Yellow color will detect motion. Grey color will not detect. System default the whole area will detect.

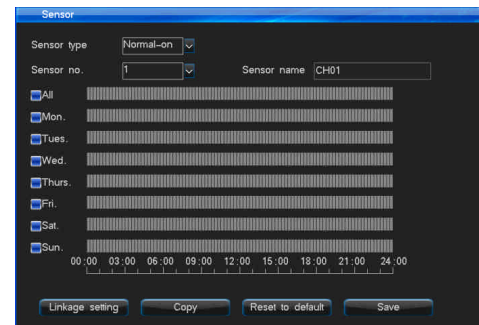
Set motion area by remote controller or by DVR front panel: Press direction key to move the cursor to make sure the start point. Press “OK” button to select, only can select a grid one by one. Press “Return” button return to motion detection interface to save the setting.

Set motion area by mouse: Left click mouse to select one start point, drag mouse to other place, then loose the mouse, it will display a area box. This area is the motion detection area. Right click mouse to return pre-interface. Double left click mouse to cancel the motion area setting.

Step5: Set the deployment time (the specific setting please refer to schedule record).

Step6: Linkage setting: Set Trigger Record, Screenshot linkage, Alarm output, Email linkage, PTZ preset point.

- Trigger Record: Select the channel number which you want to set linkage.
- Screenshot linkage: choose the channel which for screenshot linkage and set the motion screenshot at screenshot parameter menu.
- Alarm output: If alarm output setting is blue color means it will alarm when have alarm events. If is grey color mean will not alarm output.
- Email linkage: Select “Email linkage” means DVR system can send the alarm information to your email box which have set when motion alarm happens.
- PTZ preset point: System support the function of dome will turn to preset point when motion happens. (the specific setting please refer to sensor -> PTZ preset point).



4.6.2 Sensor

Sensor alarm recording setting steps:

Step1: Enter "Main Menu" -> "Record Setup" -> "Record Para." interface to set the channel pre-record time and delay-record time.

Step2: Enter "Main Menu" -> "Alarm Setup" -> "Sensor", then the interface is the right figure above:

Step3: Select Sensor type: Normal on or Normal off.

Step4: Select sensor number.

Step5: Set sensor deploying time (the specific setting please refer to schedule record).

Step6: Linkage setting: Set Trigger Record, Screenshot linkage, Alarm output, Email linkage, PTZ preset point.

- Trigger Record: Select the channel number which you want to set linkage.
- Screenshot linkage: Choose the channel which for screenshot linkage and set the alarm screenshot at screenshot parameter menu.
- Alarm output: If alarm output setting is blue color means it will alarm when have alarm events. If is grey color mean will not alarm output.
- Email linkage: Select "Email linkage" means DVR system can send the alarm information to your email box which have set when sensor alarm happens.
- PTZ preset point: System support the function of dome will turn to preset point when alarm happens. Setting steps as below:

1. Select "PTZ preset point" enter setting interface. Enable "PTZ preset point available", then set the PTZ preset point. (Note: PTZ preset point value range 1-255, 255 means close.)

) After finish setting, save the setting and return to sensor setting interface.

2. Set the COM number, COM device and baud rate in COM Setting interface.

3. Set the PTZ protocol and address code in PTZ Setting interface.

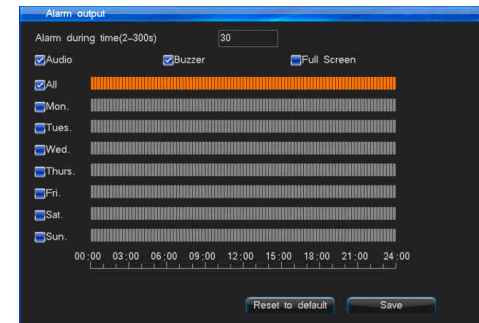
4. Switch the image to which you want to set preset point channel, press "PTZ" button in remote controller or front panel to enter PTZ control mode. Click "Preset" button, input the preset point which you have set in step 1. Or you can right click mouse to enter PTZ control mode, then input the preset point, click "Preset" button to save the setting, at last exit the PTZ control mode.

4.6.3 Alarm Output

Enter "Main Menu" -> "Alarm Setup" -> "Alarm Output" interface as the right picture:

You can set alarm during time, audio, buzzer, full screen and alarm output deploying time.

- Alarm during time: Alarm detection time 2~300 seconds. System default as 30 seconds.
- Audio: If you select it, the alarm sound will be send out from the audio output.
- Buzzer: The buzzer in mainboard will beep after have alarm.

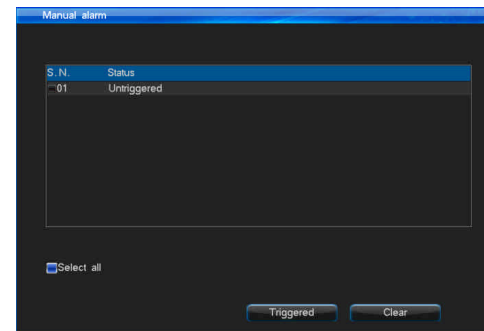
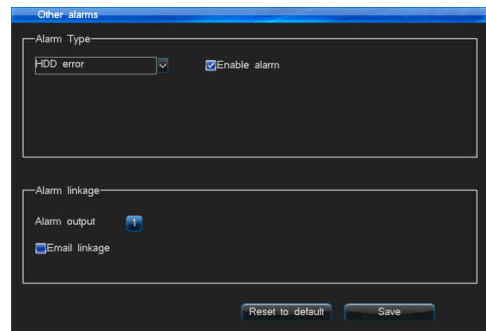


- Full screen: When preview image have multi-channels, if system detect alarm, the alarm channel will full screen display.
- Alarm output deployment time: System default set alarm output deployment time is everyday 00:00-23:59.

4.6.4 Other Alarms

Enter "Main Menu" -> "Alarm Setup" -> "Other Alarms" interface as below:

- Alarm type: HDD error, Video lost, Network disconnection, High temperature, Video mask. HDD error, Video lost and High temperature default enable alarm function. Network disconnection and Video maks default disable alarm function.
- Alarm linkage: If the "Alarm output" button is blue color, means enable alarm output when there has alarm event. If is gray color mean disable alarm output. HDD error, Video lost, High temperature and Video mask support email upload function.



4.6.5 Manual Alarm

Enter "Main Menu" -> "Alarm Setup" -> "Manual Alarm", the interface is the right figure above:

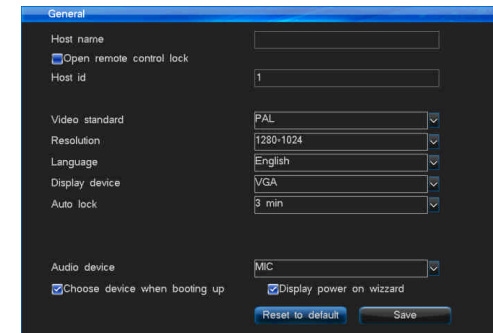
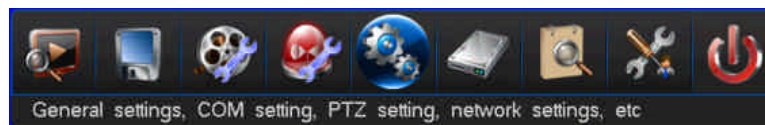
If there has some emergency abnormal events, you can manual trigger the alarm to inform the related people.

Realization way: Left click mouse to select the alarm number which you want to alarm or you can select the "Select all" button. Then click "Triggered" button to open DVR alarm.

Can click "Clear" button to close the DVR alarm sound.

4.7 System Setup

System Setup have sub-menu: General Setting, Time Setting, Output Setting, COM Setting, PTZ Setting and Network Setting, the interface is as follows:



4.7.1 General Setting

Enter “Main Menu” -> “System Setup” -> “General”, the interface is the right figure above:

- Host Name: Can set your DVR host name.
- Open Remote Control Lock: Select and open the remote controller lock function, then you can lock the DVR by remote controller.
- Host id: If COM keyboard connect mult-DVRs at the same time by parallel connection, it will be as identify code to control and distinguish different hosts. And also is the host number locked and unlocked by remote controller.
- Video standard: User can choose the system video format as PAL or NTSC.
- Resolution: Support 1024*768, 1280*1024, 1440*900, 1920*1080.
- Language: English.
- Display device: switch VGA/CVBS output.
- Auto Lock: System will enter locked status when lock time (1-10 minutes) out. System default set 3 minutes.
For example: Set the lock time as 3 minutes, if you do nothing operation on DVR in 3 minutes, the system will auto enter locked status.
- Choose device when booting up: choose and save, the next booting will prompt to choose VGA/CVBS output.
- Display power on wizard: If have selected and saved the button, the system will display “Do you enter the initial start wizard?” message after DVR restart. You can quick set “Time setting”, “Network setting”, “Record parameter”, “Manual record” settings.

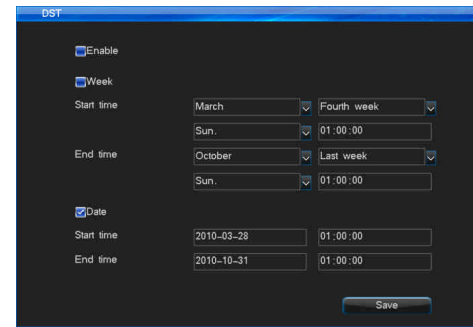
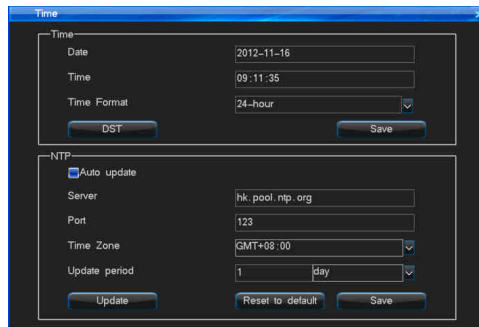
4.7.2 Time Setting

Enter "Main Menu" -> "System Setup" -> "Time" interface as below:

- Time Setting:

This function is used to set or modify current system time, the system adopted the perpetual calendar. You can directly input the date number or double click to pop-out calendar table change the date, the day will change as the date's change.

Note: Please check the system time when firstly use. Because system time is in close relation with video record, try not to adjust system time on general occasion.



- DST Setting:

Click the "DST" button to access the setting interface (as the right figure above), then set the starting time and end time through the week or date.

For example: The DST of EU countries is from the last Sunday on March to the last Sunday on October. EU countries change the time at 2:00 of the last Sunday on March in GMT. According to the time zone in different area, Western Europe time zone (UTC) countries (like: Britain, Ireland and Portugal), central Europe time zone (UTC+1) countries (like: France, Germany and Italy) and eastern Europe time zone (UTC+2) countries (like: Finland and Greece), The local time distribution form 02:00/03:00 adjust to 03:00/04:00. Inverse adjust at 03:00 of the last Sunday on October in GMT.

||||| User Manual

- NTP Setting:

NTP: NTP (Network Time Protocol) means to get current time from remote server via network to as DVR system time. Please make sure your DVR can access internet before use NTP.

The default sever is hk.pool.ntp.org, port: 123, time zone is GMT+08:00.

Time Server: The default time serve can automatically sync time succeed if your network is OK. If the default time server cannot work, you can set the time server which can be connected.

Port: Time server port. Current NTP only support TCP transmission.

Time Zone: System support 26 time zones. User can set according to current zone. Including:

London: GMT+0, Berlin: GMT+1, Cairo: GMT+2, Moscow: GMT+3, New Delhi: GMT + 5, Bangkok: GMT + 7, Hong Kong Beijing: GMT + 8, Tokyo: GMT + 9,

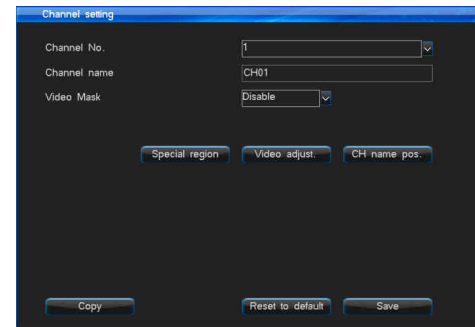
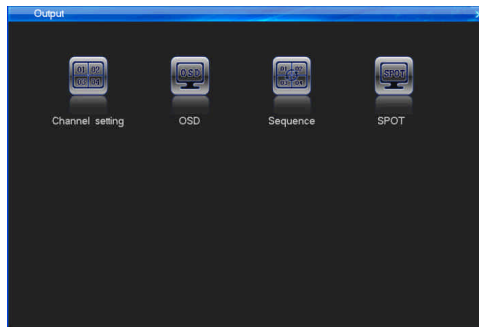
Sydney: GMT + 10, Hawaii: GMT - 10, Alaska: GMT - 9, Pacific time: GMT - 8, American mountain time: GMT - 7, the United States central time: GMT - 6,

the United States eastern standard time: GMT - 5, Atlantic time: GMT - 4, Brazil: GMT - 3, Atlantic - central: GMT - 2.

Update cycle: The unit is hour, day or week. The effective range is 1-60. Select "Auto update" button, the system will update when cycle time out. Also you can select "Manually update" button to upgrade immediately.

4.7.3 Output Setting

Enter into "Main Menu" -> "System Setup" -> "Output" interface as below:



1. Channel Setting

Enter into “Output” -> “Channel Setting”, the interface is the right figure above. You can set channel name, video mask area, special area, video adjustment parameter and channel name position.

(1) Channel name

- Channel name can input max 31 characters.
- Left click mouse in the text field, then it will pop out soft-keyboard. The keyboard default as inputting english letters. Can click “Caps” button in soft-keyboard to change case. Can click the button right on the text field to switch inputting numbers, English letters, characters.
- Input by remoter controller: Continuous press numeric key to switch input ways.
- When copy channel settings, it will not copy channel name.

(2) Video mask setting

In some surveillance occasion, user need to mask the sensitivity or private area in the surveillance area of the location, such as ATM’s password area.

There has 4 mask methods: Disable, Preview Mask, Record Mask, All Mask. Record Mask and All Mask max support 4 mask areas.

- Disable: Not open Video Mask function.
- Preview Mask: The channel of whole preview realtime-preview image will can not be saw. But it will be recorded.
- Record Mask: It will not show mask area in realtime-preview image, but the set area will not be saw in record image.
- All Mask: The image mask area which you have set will cannot be saw in realtime-preview, record and web access image.

Mask area setting steps:

- Select “Record Mask” or “All Mask” in Video mask drop-down list. Click “Mask Area” button in right side to enter into mask area setting interface.
- Set by mouse: Left click a pane as the start position of the mask area, then click another pane as the end position, and the area will shown.
- Set by remote controller and front panel: press direction key to move the cursor, press “OK” to confirm the start position, then move the cursor to select the area you want to mask, press “OK” again to confirm the end position. Press “Clear” to cancel the area.
- Back to the channel setting interface, click “Save” to activate the setting.

(3) Special region

The Special region which you have set will more obvious and clear. You can max set 4 special areas. The setting method is similar to mask area setting’.

Note: You can only see the special area setting effect in dark case. It will have no difference under normal circumstance.

||||| User Manual

(4) Video adjustment

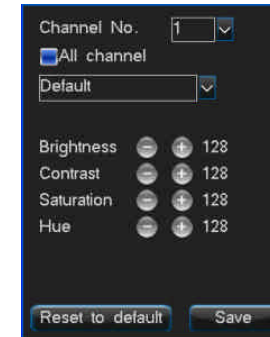
- Click “Video adjustment” button in channel setting interface to enter into channel parameter setting interface. Or you can press “Image” button in remote controller or front panel to enter “Video Adjustment” interface after login DVR as right picture:
- System default channel parameters: Brightness 128, Contrast 128, Saturation 128, Hue 128.
- Channel No.: Used to switch channels, user can also setup all channels directly.

Adjustment Method:

- Select the parameters you want to change, then press “+” , “-” button on the remote controller.
- Click the left mouse on the “+”, “-” to change the value, the “+”, “-” on the interface can indicate the increase or decrease of the value.

(5) Channel name position

Channel name default at top left corner. Click “CH name pos.” button to enter into channel name setting interface, drag the channel name to any position you want in the screen.



2. OSD

Enter into “Output” -> “OSD”, the interface is the right picture. You can set date format, displaying time, displaying channel name, displaying temperature.

3.Sequence

Enter into “Output” -> “Sequence”, the interface as follows. The function is to realize different channels switching, can set the sequence channels, sequence image format and sequence cycle.

- Sequence Cycle: Sequence interval is 3-60 seconds.
- Division Mode: Have 1 image, 4 images two options.
- Sequence channel no.: It will the same or bigger than the number of division mode.

Note: Function only available when DVR in lock status!

4. SPOT Setting

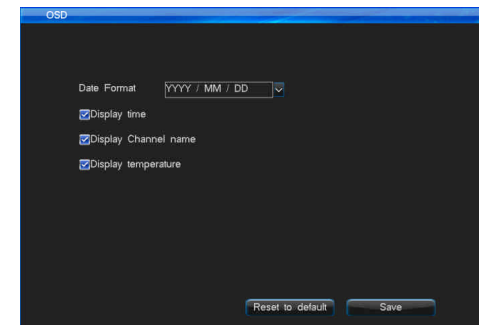
Enter “Main Menu” -> “Output Setting” -> “SPOT” as below interface, SPOT setting steps:

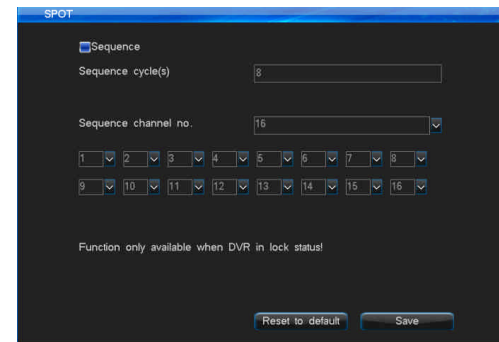
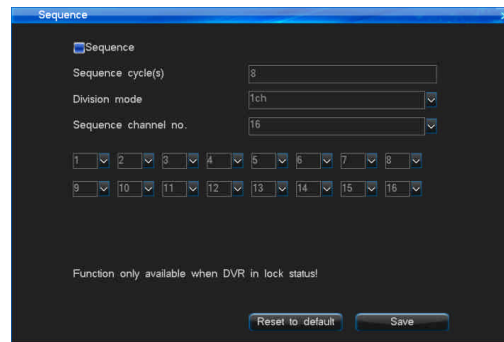
- (1) Enable “Sequence” button. Input the Sequence cycle time (unit is second) and select sequence channel.

Note: The channel participate in sequence can't be repeat.

- (2) There has a special output for SPOT in DVR back-panel. It's CVBS output.

- (3) SPOT will only work when DVR in lock status.





4.7.4 COM Setting

Enter into “Main Menu” -> “System Setup” -> “COM”, the interface is as follows. You can make your DVR communicate with COM device via this setting. DVR serial port only have RS485 port. The RS485 is half-duplex for transceiver function. It can connect control keyboard and PTZ simultaneous.

- The parameters of RS455 are: Baud rate, Data bit, Stop bit etc..
- COM type: Define COM device type, have PTZ, COM keyboard and Tranparent channel 3 types.
- Baud Rate: Set the same baud rate with the COM device, if you want to connect PTZ or control keyboard, you have to set the same baud rate with PTZ or control keyboard.
- Data bit, stop bit, check bit: Set the data bit, stop bit and check bit according to the PTZ protocol code. Commonly, the PTZ protocol’s default date bit is 8, check bit is None, stop bit is 1.
- Host address: When one keyboard connect with several DVRs in the parallel way, the keyboard is used to control and differentiate different DVR’s identify code.
- ATM protocol: Select default.

4.7.5 PTZ Setting

Enter into PTZ Setting interface by “Main Menu” -> “System Setup” -> “PTZ Setting”, the interface is as follows:

PTZ Control Setting steps:

- Set the COM type, COM device and baud rate in COM Setting interface.
- Set the PTZ Protocol and address code. (Default PTZ address code correspond to channel number. It means the address code of first channel is 1.)

Note: The PTZ protocol, baud-rate and address code should be the same with Dome Camera Protocol.

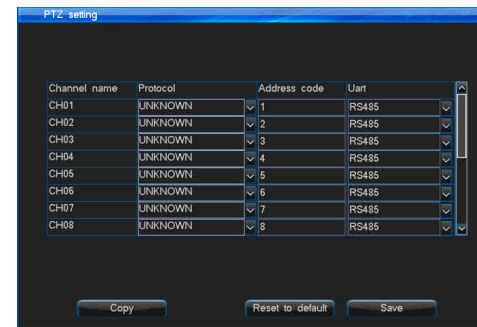
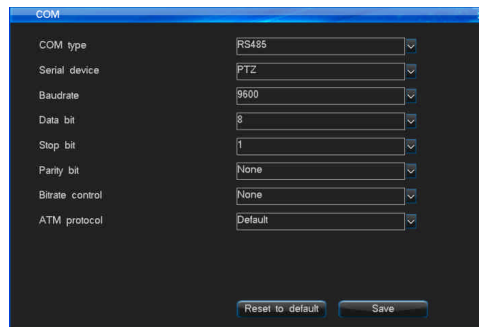
- Switch the channel which you want to control PTZ to whole screen. Press the “PTZ” key on the remote controller to get in the PTZ control mode, then you can use the remote controller to control the PTZ, press “PTZ” again you can quit the PTZ control mode; You can long press “PLAY/PTZ” button in DVR front panel (3 seconds) or right click the mouse to enter the PTZ control interface.

Note: Drag the interface to move it.

- Setting and calling preset point by the remote controller:

Enter the PTZ status, press the direction button make the PTZ turn the direction which you want to set as preset point, press “*preset” button on remote controller and input the No. of the preset point in the text field, such as 001, then turn the PTZ to another direction, if you press the “#call” button and input the No. 001 which you preset to the text field, the PTZ will turn to the 001 preset point automatically.

Note: value range 1-255, 255 means close.



- Setting and calling preset point by mouse:

Enter the PTZ status, double left click mouse at the preset input text field to enable the software-keyboard and input the preset No. (such as 001). Right click mouse to quit software-keyboard, then click "Preset" to activate the setting. Then turn the PTZ to another direction, if you click the "Call" and input the No. (001) which you preset to the box, the PTZ will turn to the 001 preset point automatically. Right click mouse in blank area to exit the PTZ interface.

- Multi-preset position cruise setting: Click "Cruise setting" in PTZ control interface to enter into setting interface, set related multi-preset point cruise parameter:

(Note: Function only available when DVR in lock status!)

(1) Cruise interval time: 0-99s.

(2) Preset No.: each channel can max set 16 preset position.

(3) Range of preset No.: 001-255, 255 means closed.

- Cruise cruise track record: Click "Switch" button in PTZ control interface to switch to "Track record" interface (as below picture): Cruise track is pre-record user operation of dome camera (UP-Down, Speed, Focus, Zoom, Iris), then repeat the same operations all the time.

Operation steps:

Open on track cruise function, first click "Track record" button, operate dome camera some time (such as up, down, speed, focus and so on), then click "End" button to finish recording track. Click "Running" button, then dome will repeat the track you have set until you operate dome manually.

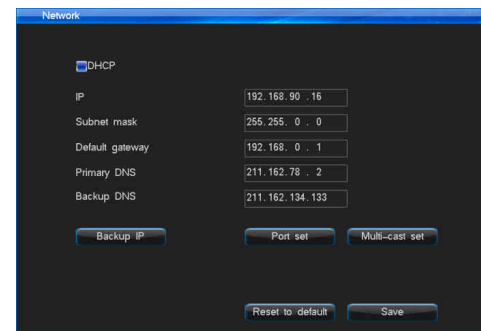
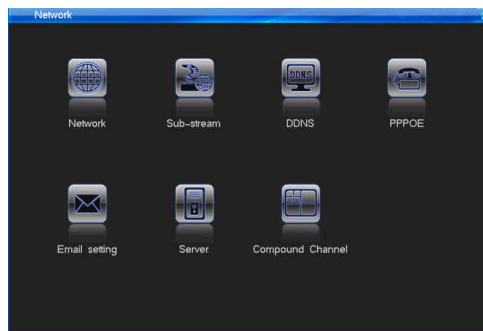
Note: Currently only PELCOD, PELCOP, SONY, CS850B protocol support track cruise. The protocol which don't support the function will not display "Track record", "End", and "Running" 3 buttons.





4.7.6 Network Setting

Enter into “Main Menu” -> “System Setup” -> “Network”, the interface is as follows:



1. Network Setting

Enter into “Network” -> “Network”, the interface is the right figure above:

- DHCP: If there have DHCP server, you can select the “DHCP” option, DVR will obtain a dynamic IP address from the server and displayed within the IP address column.
- IP: This IP must be unique. It can't conflict with the IP of other servers or working stations in the same LAN. Default: 192.168.0.6.
- DNS server: Please input the DNS server address which get from local network operator.
- Backup IP: The backup IP will work when the DHCP fails.
- Port Setting: Command Port, HTTP Port, Upgrade Port.

Command Port: The communication port with client. Default is 8101, value range is 8000~9000.

HTTP Port: Web browser access port. Default is 81. The access format is: http://IP:http port.

- Multicast Setting:

Enable multicast: This function only used on UDP stream.

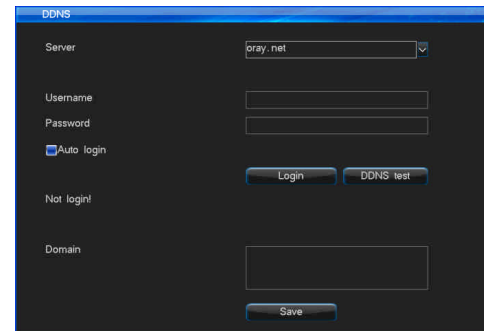
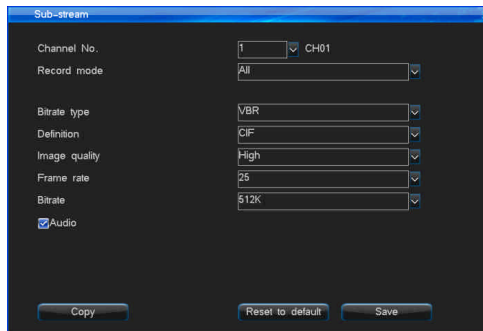
Multiple IP address: Multiple IP address set range is from 224.0.0.0 to 239.255.255.255; The system default is 239.0.0.1.

Multiple port: The default port is start with 8000.

Note: If there are 2 DVRs or above in one section of the net, please ensure that the multiple port is unique, or you cannot open the multiple video.

2. Sub-Stream

Enter into “Network” -> “Sub-stream” interface as below picture. Sub-stream is related to Network transmission and network record storage. When you preview DVR host playback the record by remote network, it will use the Sub-stream (Network-Stream) to transmit the data. Please refer to 4.5.1 record parameter setting.



3. DDNS

When the device use PPPOE to connect WAN, access the device by DDNS can effectively solve the dynamic IP problem, support oray, dyndns, no-ip, meibu and freedns, according to the demand to register one can be used. Enter the “Network” interface, select “DDNS” to access the DDNS setting page, as the picture above right:

- Login www.oray.cn (www.no-ip.com, www.meibu.com, www.freedns.org) to apply the oray (no-ip, meibu, freedns) DDNS service, please write down the username and the password. Choose the oray server on the DVR, input the username, password you have applied, save it, then you can see the DDNS information after a few minutes.
- Login www.dyndns.com to apply the dyndns DDNS service, please write down the username and the password. Choose the dyndns server on the DVR, input the username, password you have applied, save it, then you can see the DDNS information after a few minutes.
- DDNS test: test the account whether is available .



4. PPPOE

Select "Network" -> "PPPOE", and the interface is as follows:

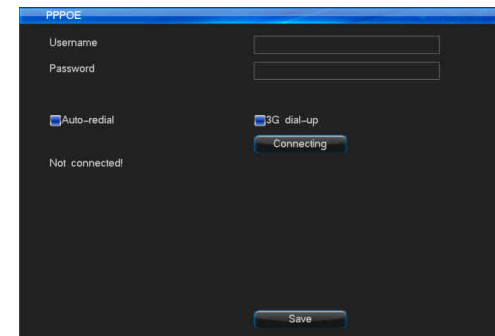
PPPOE is one of the mode to connect to the WAN: Connect to the WAN by system via dialing the ADSL directly. Please get the PPPOE account from network operator.

- Username: ADSL account user name.
- Password: ADSL account password.
- Auto Connect: If you select this option, system will automatically connect the WAN after disconnection.
- Connect: After you input the correct ADSL account and password, focus the cursor on the icon and press "Connecting" to connect the WAN.
- Save: If you select this option, system will automatically save the ADSL password, so you don't need to input them again when reconnect to the WAN.
- 3G dial

Insert the 3G network card into USB interface. Select 3G in "Main Menu" -> "Network" -> "PPPOE" interface. Select "3G dial-up" button, then input the 3G user name, password, and select the correct 3G network formats. Click "Connecting" button to begin 3G connection. Please check below reason if you dial 3G failed:

- Currently we only support Huawei EC1260/EC1261/EC122/E261/E353/E153 3G network card. Please check if your 3G card is anyone of them.
- Please check if your 3G wireless card is matching with your telephone card network.
- Please confirm you have selected "3G Dial up" button. You can input "card" in username and password input text box or input nothing.
- Please confirm if you have select correct network standard (CDMA/WCDMA/TD-SCDMA).

Note: You must connect the net manually after first set the "Auto-redial".



5. Email Setting

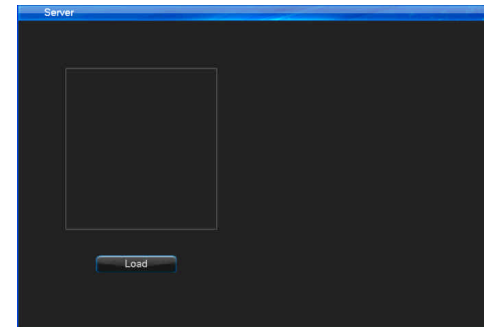
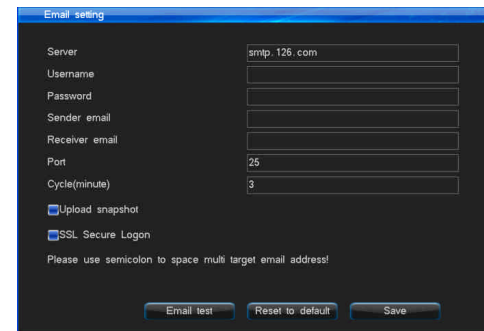
After login, enter into email setting interface follow “Network” -> “Email setting”, the functions support email upload are “motion detection”, “sensor detection”, “HDD error”, “video lost”, “over temperature”, “video shield”, the interface is the right figure:

Email linkage setting steps:

- (1) First enable the “Email Linkage” setting in Motion or Sensor or Video lost interface.
- (2) Set the email server address. Default is smtp.126.com.
- (3) Input the email username and password which account you applied in email service provider.
- (4) Input the mail address which applied from SMTP server in the “Sender email”.
- (5) Input the receiver mail box which can be multiple and separated by “;” The maximum length of the letter you input is 256 bit.
- (6) Default port is 25, normally do not need to change.
- (7) Set the e-mail upload interval time, that is the time interval for upload alarm information to the target email, no matter how many times alarm triggered, it just upload once during every interval time.
- (8) Select “Upload snapshot”, it will send the picture which snapshoted by the DVR system when alarm happens to the email address you have set (Video lost will not upload snapshot picture, it will only send text message).
- (9) After saved the setting, the receiver mailbox will get the alarm information mail when alarm is triggered.
- (10) Enable “SSL Secure Logon”: This is option function, some email service need safe connection. Please according to actual email setting to select SSL.
For example: gmail, 163, yahoo email (port is 465) and Hotmail email (port is 25) should enable “SSL Secure Logon”.
- (11) If mail unable to send, please check whether DVR can access internet, or the mail server can work well.

6. Platform Server

This function reserve for add platform server in future, the interface is as right picture:



7. Compound Channel

After entered into “Compound Channel” interface, you will have below interface:

Compound channel function is that it can display multiple any channels in the Compound channel in web browser netview interface.

a. Set compound channel, select “Enable” button, click “Parameter Setting” button to enter into the interface as below picture:

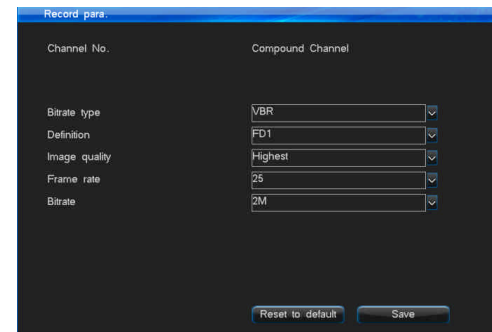
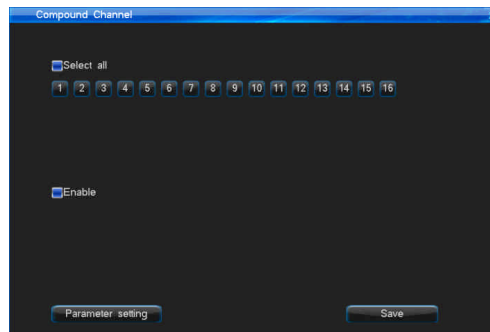
b. Compound channel parameter setting please refer to “4.5.1 Record Parameter Setting”.

Operation method as follows:

- Except above setting method in DVR host, you can also set in web side. After login DVR by network access in browser, you can set the compound in “Config” -> “Channel Parameter” -> “Compound Channel”. Please refer above host side setting.
- Right click mouse to select Network Stream as TCP Main stream. double click “Compound channel” in channel list in web interface, then you will see the multiple images.

You can set max 4 images. Compound channel image has not channel number display.

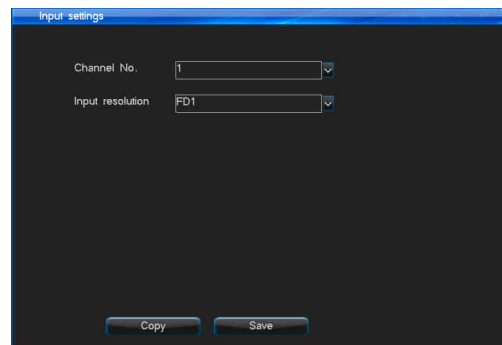
Note: Compound channel record parameters and 4.5.1 record parameters will not influence each other; Compound channel will only work as main stream, will be invalid as sub stream.



4.7.7 Input Settings

Please do confirm and set the video image resolution is FD1 or 960H before you connect video input. It's is very important. It will be related to record parameter setting, snapshot parameter setting, Sub-stream parameter setting, record file resolution, snapshot picture resolution and sub stream resolution.

Please set the input setting in "Main Menu" -> "System Setup" -> "Input Settings" interface as below:



4.8 HDD Management

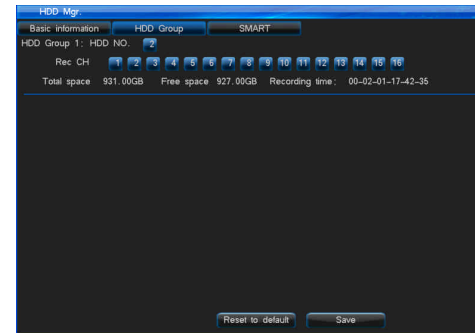
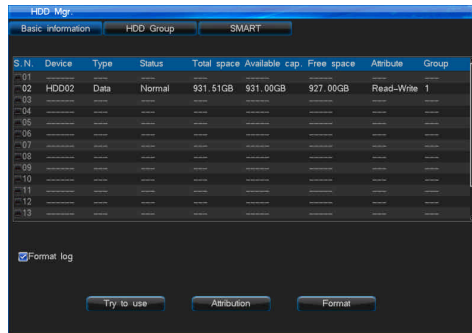
After login, you can check the HDD General Information, HDD Group Setting and SMART Information by "Main Menu" -> "HDD Management" menu.

4.8.1 Basic Information

You can check the general information of HDD in HDD management, the interface is as follows:

- 1) Check the HDD general information: The first row display the disk number corresponding to disk interface; The second row display the HDD device; The 3, 4, 5, 6 rows display the partition type, status, total capacity, and available capacity. The system only support FAT32 format, please use the HDD which above 32G; If there have multi-partition in one HDD, the system only read the first partition.
- 2) Try to use: when disk is abnormal, choose the corresponding disk and click "Try to use", then the host will forced to use the disk and the host will use the normal partition in it after rebooting.
- 3) HDD property: There are Read-Write and Read-only two kinds of attribute, default as Read-Write. If you want to prevent that the important record to be deleted or overwrite and protect the record, you can set the HDD as Read-Only. Setting steps: Click the "Attribution" button in "Basic information" interface, then open "Disk property setting" interface, set the "Attribute" value as "Read-Only", then click "Save" button.
- 4) HDD Format: Select the right disk number which you want to format, then click the "Format" button.

Notes: When you formating log file, you need select the right HDD which stored the log before click "Format log" button.



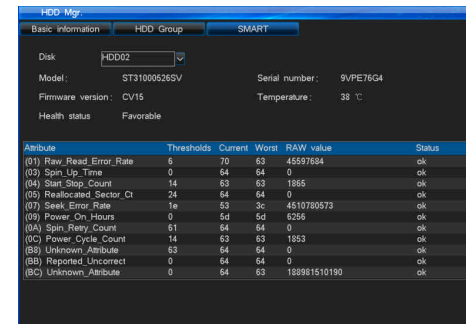
4.8.2 HDD Group

Note: You can choose the right channel record to specified HDD group. It can take you follow convenience:

- 1) Can make sure specified channel record to specified HDD.
- 2) According to channel data quantity size specifi the right HDD. Reasonably set each channel storage space.

You can select "HDD Group" sub-menu in "HDD Management", the interface is the right figure above. System support maximum 4 HDD group.

- HDD Number: Set the right HDD belong to the right group;
- Record Channel: Set the right channel belong to the right group;
- Total Capacity: Display the total capacity of all HDD in the HDD group;
- Free Capacity: Display free capacity of all HDD in the HDD group;
- Record Time: Display the max time of record which current HDD group can storage.



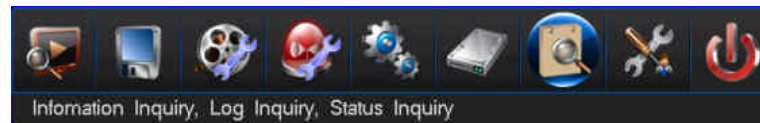
4.8.3 SMART

Choose "SMART" option interface as the right:

You can check the HDD SN, firmware version, temperature, state of health and other SMART values.

4.9 Information Inquiry

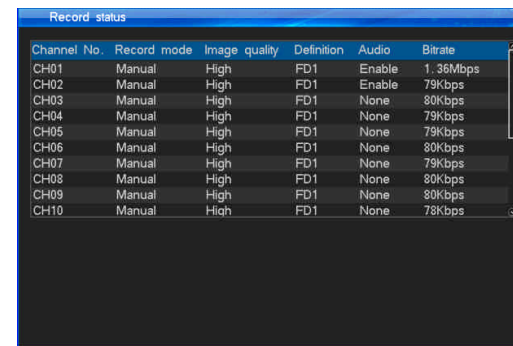
Check the DVR firmware version and log information by the menu "Main Menu" -> "Info. Inquiry". The sub-menu have Sys Info. , Record State, Alarm State, Online State, Log Inquiry and Input State as below:





4.9.1 System Information

System information will display the interface as follows:



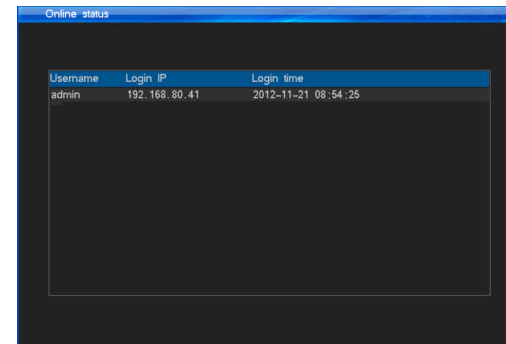
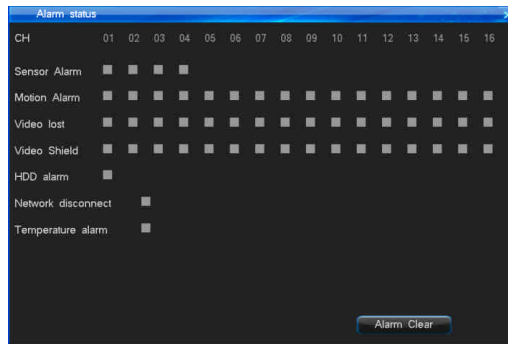
4.9.2 Record Status

Can quickly query system current record state. The system can display the "Record mode", "Image quality", "Definition", "Audio(Enable/None)", "Bitrate" of each channel in the state list. If the system is recording, it will display one record mode of Manual/Schedule/Motion/Alarm. It will display current definition and bitrate of current video input. And also display current audio input state. The interface is right figure above:

4.9.3 Alarm Status

Alarm status interface as follows:

Display 4 kinds of alarm information of each channel: Sensor Alarm (Red mark), Motion Alarm (Yellow mark), Video lost (blue mark), Video Shield (Green mark). You can click the “Clear” button to close alarm sound in DVR front panel or in IR remote controller. Also you can click the “Alarm Clear” icon in DVR interface status bar to close alarm sound.



4.9.4 Online status

Display the information which PC has login the DVR. It will display the username, IP of PC and login time, the interface is the right figure above:

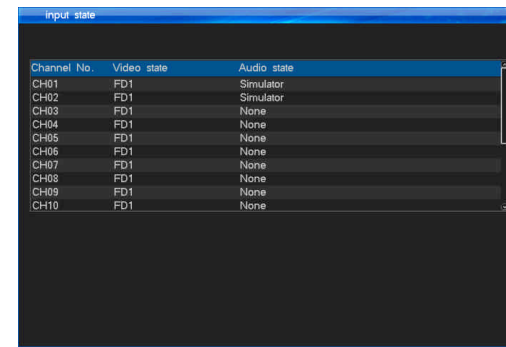
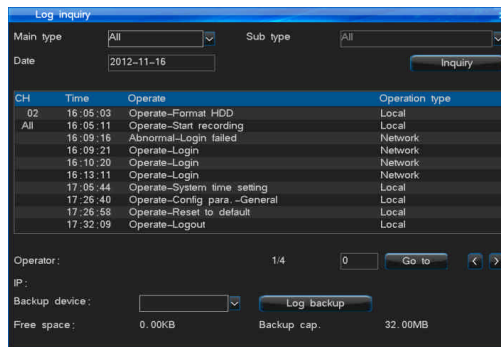
Note: Our CMS software may affect the online information displaying. If CMS has add one DVR with the IP, even if you don't open the PC Terminal, the PS Service server will connect DVR. Then it will shows the PS Service server IP address in the online state interface.

4.9.5 Log Inquiry

Log inquiry interface as follows:

- Note: The log total number of the day which you inquired (Log information max support 1023 days, 524032 item logs); You can check the DVR host log information by web.
- System log include: System boot up/Shut down log, firmware upgrade log, alarm log, PTZ control log, System user login log, System parameter change log, Record playback log, backup log, Formatting HDD log, client login log.
- System support backup log. (Backup device: USB disk, mobile HDD), you need inquiry log first before backup log.

Note: Log file which saved in DVR HDD cannot read directly by PC when you insert the HDD in your PC mainboard interface, you need check the log file by special DVR HDD analysis tool to inquiry.

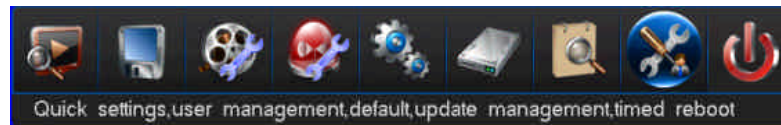


4.9.6 Input State

The input state interface will display the video/audio input source of each channel, the interface is the right figure above:

4.10 System Maintenance

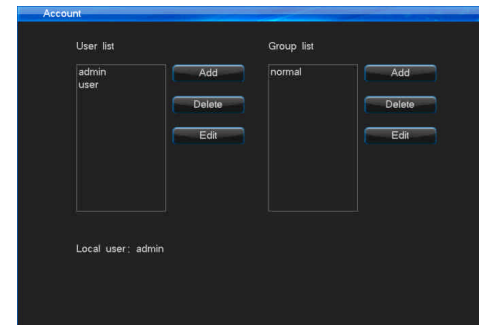
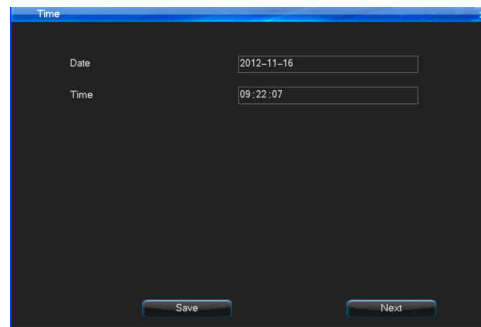
Open "Main Menu" -> "System Maintenance" to quick set and manage users etc., the interface is as follows:



4.10.1 Quick Settings

You can quick set "Time setting", "Network setting", "HDD management", "Input settings", "Record parameter" and so on operations, please refer to "4.2 power on wizard".

Note: Please click "Save" button to save your parameter setting.



4.10.2 User Management

When the DVR leaves the factory, there is just one user named "admin", the default has the most powerful right of all the users, and can create 15 users at most, all the rights of administrator should modify the password on the "Account" interface, the interface is the right figure above:

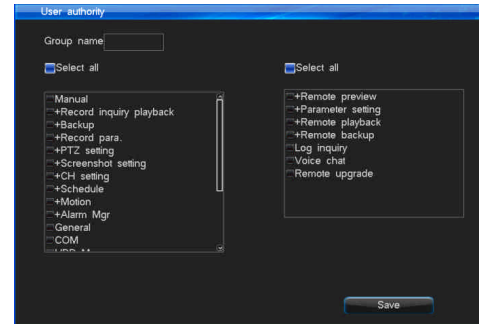
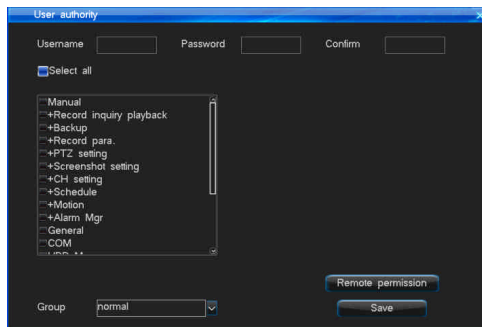
|||| User Manual

1. User Management

- Add/delete user: Focus the cursor on the “Add” icon and click to add new user, move the cursor to select the user in the user list, then focus the cursor on the “Delete” icon and click to delete the user.
- Modify password: Using the direction key of the remote controller to move the cursor to the user list, press “OK”, then you can get in the interface, or click the mouse to get in.
- Support local and remote rights setting.

2. User Group

Support user group function: each user can just take part in one group, the admin user can distribute rights to users in this group. The interface is as follows.



4.10.3 Reset to Default

The way to restore default setting: After login, through “System Maintenance” -> “Reset to Default” continuous operations to enter the interface, the interface is as follows:

Note: Network IP and port, System time, user account and hard disk management wouldn't be restore default when do this operation.

System default parameters:

General: Enable auto-lock (enable), Auto lock (3 minutes); Open remote control lock (disable); Host id (1), Display power on wizard (enable).

Output: Video area mask (disable); Special region (disable); Channel name position; Display time (enable); Date format (YYYY-MM-DD); Display channel name (Enable);

Display temperature (Enabled); Channel Sequence (Disable).

Encode Para.: Record mode (All); Encoding stream type (VBR); Definition (FD1); Bitrate (2M); Image quality (High); Frame rate (25fps); Audio (Enabled);
 Audio type (digital audio); pre-record time (10s); Alarm Delay-record time (30s); Enable schedule snapshot (Disable); Enable motion snapshot (Disable);
 Enable alarm snapshot (Disable); Snapshot period (1S); Snapshot number (1 pcs).

Schedule record: Schedule record (Disable).

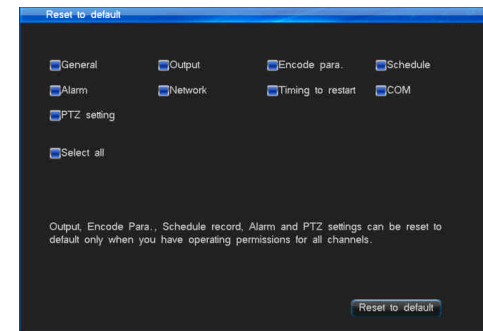
Alarm Setting: Motion record (Disable); Alarm record (Disable); Sensor type (Normal On); Alarm output channel (1-4); PTZ preset point (Disable); Email linkage (Disable).

Network: Auto redial (Disable); Network bitrate (512K); Image quality (High); Network audio (Enable).

Schedule Restart: Schedule restart (Disable).

COM: COM device (PTZ); Baudrate (9600); Data bit (8); Parity bit (None); Stop bit (1).

PTZ: PTZ Protocol (Unknown); Address code (the same with channel number).



4.10.4 Upgrade Management

There has 3 kinds of upgrade method: 1.Web netview upgrade 2. USB upgrade 3.FTP upgrade

Please read the upgrade instructions carefully before upgrade.

1. Web netview upgrade

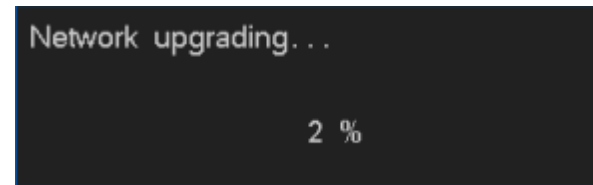
- Please double check the version of the upgrade software, so you can restore to the former version when your upgrade is failed. If your system are running well or just don't need the new function, we recommend you keep the default version. Please backup the important record files before upgrade.
- Do ensure supplying the power and the stability of network when upgrading. Network outages and interrupted power supply will cause upgrading failure. If the host-side did not appear "the update was successful, which is resuming the equipment, please be later..." in 5 minutes after the browser side shows uploading upgrade file completed, you can shut down and then reboot, then check whether the host computer update was successful.
- Please double check the version of the upgrade software, including machine model and boot interface, and make sure whether it corresponds to your system. If you have any doubts, don't upgrade, or in case you fail to upgrade the firmware, you can neither redo the system upgrade nor restart the machine (These upgrade failure machine must send back to the factory).
- After upgrade, for the new features, please refer to the user manual of the new version. You can get the new version from our website or the suppliers.
- Please don't modify the software (including the name of the firmware), otherwise, we will take no responsibility and will not provide free update.



User Manual

➤ The procedure is as follows:

1. Connect the Net DVR to PC by coherent network cable or LAN (pay attention to IP conflict).
2. Before upgrading, please confirm the IP address of host computer, input http://host IP:http port in browser address, download the webcontrol.exe and install then login.
3. After login then choose “Config” -> “Remote upgrade” to open upgrade interface.
4. Click “Browse” button to choose the file to be updated, and refer to the following figure.
5. The following figure is displayed on DVR.
6. Waits for 3 seconds, the DVR will display “Network upgrading...”. It probably takes 1-3 minutes to update the software.
7. The “System is rebooting, please wait...” message will show in DVR when firmware upgrade succeed. Then the machine will automatically restart.
8. The DVR administrator password will not change after upgrading.



2. USB Upgrade

Operation steps:

1. Copy the upgrade.bin to the U disk.
2. Plug into the USB disk on the back of the DVR, right click the mouse, then pops out the tip, and confirm it.
3. The host says “Local upgrading...”.
4. When the upgrade have been finished, the host will pops out “Local upgrade was successful!”, that indicates the upgrade is successful, then the host will restart automatically.
5. The DVR administrator password will not change after upgrading.

3. FTP upgrade

Operation steps:

1. Open the FTP server software, configure it follow the setup wizard. Create user name and password in server. Set the root directory (the folder which will place upgrade file), set the permission (must set the download permission).
2. Enter server after configuration. Set the FTP server IP and port.
3. Start FTP service.
4. Click “System Maintenance” -> “Upgrade Management” -> “FTP upgrade”, set the DVR information as below:

Username = the username which create in step1.

Password = the password which create in step1.

Port = the server port which set in step2.

Server address = the server IP which set in step2.

File path = the location where you place the upgrade file. If you set the D:\ as the root directory, then the upgrade.bin directory is D:\90XX\upgrade.bin, so the file path is\90XX\upgrade.bin, then save, click “FTP upgrade” to upgrade host.

4.10.5 Timing to Restart

Choose “Main menu” -> “System Maintenance” -> “Timing to Restart” to enter the interface, the interface is as the right lower picture:

Enable the system auto-restart function, set restart time then save. When the DVR host time reach the set time, it will shows “Schedule time out, whether restart at once?”. Choose “Yes” to confirm restart and choose “Cancel” to cancel restart. If you do no choice, the system will auto-restart after 20 seconds.

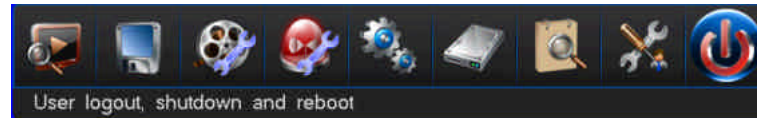


User Manual

4.11 Logout/Shutdown/Reboot

To do Logout User, Shutdown, Restart operations by “Main Menu” -> “Shutdown” menu as below GUI:

- Logout: Device will auto-lock after logout.
- Shutdown: After you shutdown here, please click the power button in front panel to start up DVR.



4.12 Password Reset

When user forget the DVR host administrator password, please recover password by following steps:

1. Shutdown DVR host. Cut off the power supply.
2. Remove the cover screws to open the case cover.
3. Find the 3 feet pin near the SCM in back of front panel.
4. Use the jumper cap to make the 1, 2 feet in a short circuit state. (The jumper cap default in 2, 3 foot when leave factory).
5. Turn on the power to start the host, the front panel buzzer will beep, indicating that the password has been cleared to the factory defaults.
6. Shutdown the host and cut off power supply again.
7. Unplug the jumper cap and return the jumper cap to default 2, 3 feet.
8. Fixed on the chassis cover, password reset is complete.

4.13 Power Resume

When system is in standby or running state, if system was cut off power supply abnormally, after the power supply recovered, the system will auto-start up and recover to the working state before power supply cut off. It can make the system work continuous when system may loss power supply.

Appendix 1 IE Operation Instructions

Notice: Please set firewall rank for low or medium, and surf software or net assistant software, etc. should be blocked or unloaded, otherwise the software may not run properly. Please guarantee to install DirectX 9.0 of Microsoft and confirm the Internet Explorer edition is 6.0 version or above. All hardware driver version should upgrade to the latest.

1. LAN Configuration for IE Browse

Step1: "Ping" the host IP first to confirm if the DVR is connected, the interface is as "Figure 1".

Step2: Type the host IP into windows IE and connect to the DVR. Input the address of the host to access the equipment in the IE browser (<http://device host IP:81>), and then enter to connect, after a successful connection click "Download" button to download, and running control. Refresh the browser, enter your user name and password to login in the login box. If login is successful, the interface will pop up as "Figure 2".

Step3: Please refer to "Client user guide" for further operation.

```

C:\WINDOWS\system32\cmd.exe
C:\Documents and Settings\Administrator>PING 192.168.0.19

Pinging 192.168.0.19 with 32 bytes of data:

Reply from 192.168.0.19: bytes=32 time<1ms TTL=64
Reply from 192.168.0.19: bytes=32 time<1ms TTL=64
Reply from 192.168.0.19: bytes=32 time<1ms TTL=64
Reply from 192.168.0.19: bytes=32 time<1ms TTL=64

Ping statistics for 192.168.0.19:
    Packets: Sent = 4, Received = 4, Lost = 0 (0% loss),
    Approximate round trip times in milli-seconds:
        Minimum = 0ms, Maximum = 0ms, Average = 0ms

C:\Documents and Settings\Administrator>_
    
```

Figure 1

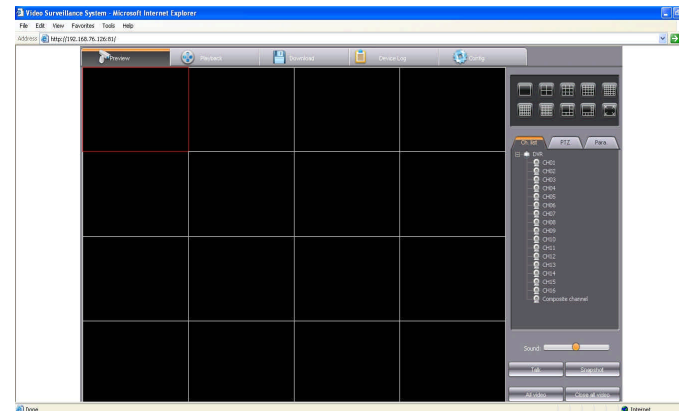


Figure 2



2. WAN Operation Instructions

Step1: If there are fixed WAN IP address which could be given to the host DVR, you could connect DVR to WAN directly, set IP, subnet mask and gateway, then access normally.

Step2: Connecting to WAN through PPPOE dialing.

Step3: Access through the router forwarding.

(When forwarding, the gateway should be set as current forwarding server. Note: forwarding instruction is for TCP protocol)

IE access format: http://WAN IP:http port; http://Domain name:http port.

Introduction of forwarding through router:

Note: In the "Figure 4", the default values of command port and HTTP port is 8101 and 81. User could set these 2 default values in customized and save.

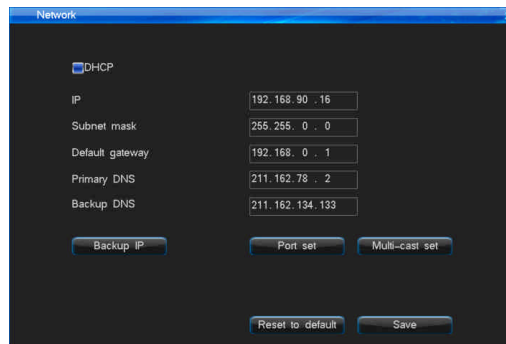


Figure3

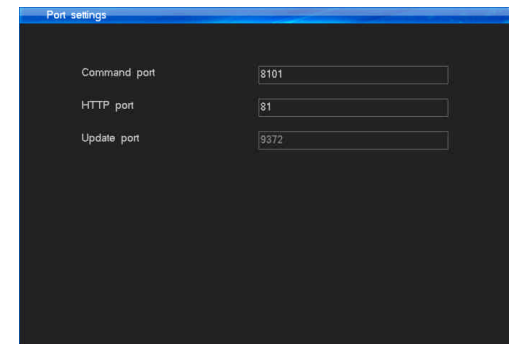


Figure4

[3]Port Description: The command port is the TCP port of all DVRs communications, and HTTP port is IE browser port.



If you connect by static IP, you need set port mapping in your router.

Take TP-LINK TL-480T model router for example:

[1] After signing up routers, by choosing “Running Status” icon on left side menu of Figure 5, view the LAN IP and WAN IP address of the routers, such as, the LAN IP address 192.168.2.1, WAN IP address 116.30.143.163.

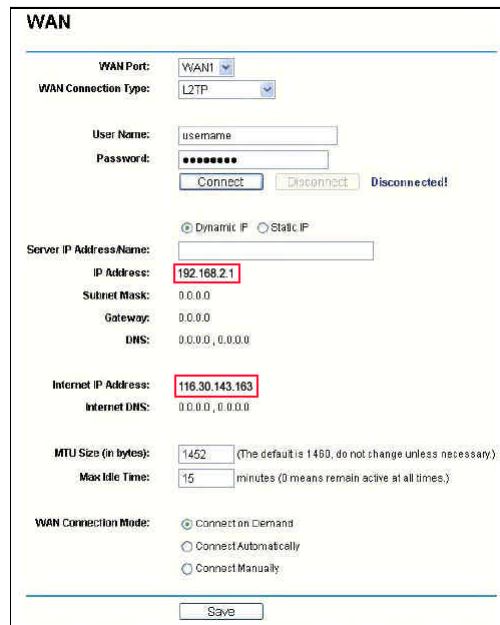
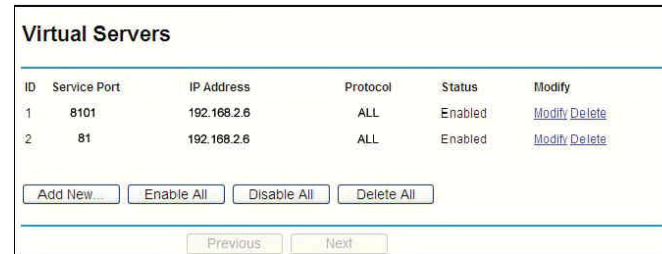


Figure5

[2] Select “Transfer Rules” on Figure 5 left menu, click “Add new” button to add new port mapping items on Figure 6 menu. You should both mapping http port (81) and command port (8101) at the same time. And each port mapping should both include TCP/UDP (ALL) protocol. Click “Save” button to save the settings.



ID	Service Port	IP Address	Protocol	Status	Modify
1	8101	192.168.2.6	ALL	Enabled	Modify Delete
2	81	192.168.2.6	ALL	Enabled	Modify Delete

Figure6

|||| User Manual

[3] Port Description: The command port is the TCP port of all DVRs communications, and HTTP port is IE browser port.
Input the address like: http://116.30.141.49:http port. After a successful connection click "Download" button to download, and running control. Refresh the browser, then enter your user name and password to login in the login box (Figure 7). If login is successful, the interface will pop up as "Figure 8".

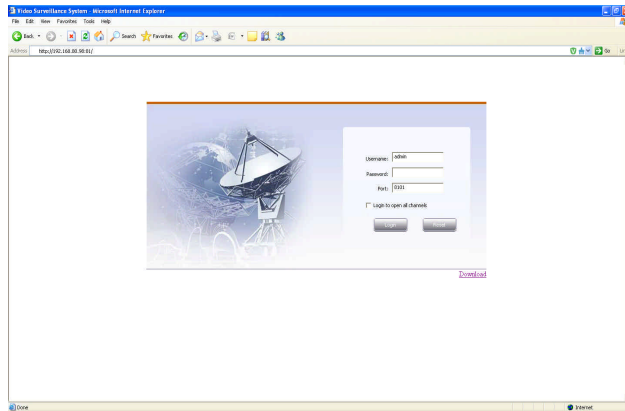


Figure 7

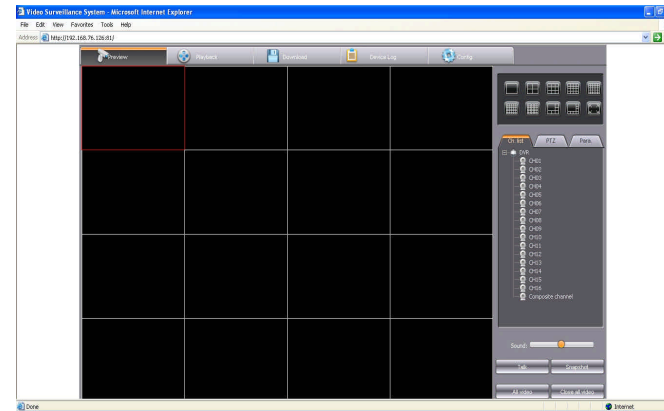


Figure 8

Appendix 2: Net DVR Q&A

Thank you for choosing our DVR series products. We will always be at your services. In case you have any difficulty while using the products, please refer to the below frequently asked questions & answers. If you cannot find solution here, or the solution offered here still fails, please feel free to contact us by our hotline and/or technical support E-mail box. We will make most timely reply to your questions.

Testing Methods:

- [1] Replace Method (Replace the power supply and HDD of the DVR).
- [2] Minimum Load Method (Get rid of the HDD, video, audio and alarm resource).
- [3] Upgrade (Solve some incompatible problems).

Note: Some problems may be caused by incorrect operation. If you can not make sure the problems, please run "Reset to default" option.



(A) The problem about rebooting, self testing, system halted.



01: Why the DVR doesn't start up though power cable is well connected to power source?



01: 1. Check if you have turned on the switcher on the back panel. 2. Check if you have inputted the right power password and pressed Enter button.



02: I see the Super DVR logo, but why it stops at self-check process?



02: To detect if the problem is caused by hard disks, please remove all the hard disks and start system again. The DVR can start up without a hard disk. After start up, system will prompt "system does not detect the disk information, whether to continue". Click "OK" button, and the host can engage in normal operation.



03: My system can finally start up but seems to be quite slow. Why?



03: Hard disk error will take system much time on rechecking.



04: Why does my system restart after self-check?



04: 1.Check the hard disks if they are in FAT32 file format, if not, change to FAT32. 2.Check Color System setting in Record Parameter menu. In case this setting is PAL, while present video input is in NTSC format, which will cause system restart. 3.Please unplug the network cable, to see whether DVRs run normally, since there are serious problems of the network which may also cause the host to restart repeatedly.



05: Why my remoter doesn't work?



05: 1.Please check if the IR indicator light on the front panel flashes when you make operations with the buttons. If not, please check whether the remote control has run out of battery, or the remote control has been damaged. 2.Check if the front panel is in lock up status. If so, press Login/Lock button and input power password to unlock. 3.Please check if the host software locks the operation. If yes, please input user name, password to login, so to make IR remoter control work.



06: Why system halts at some certain time?



06: In case system halts at some certain time, for example, around 7:30am, please check your electricity system. This problem is mostly happened in factories, when at around 7:30, all machines start and cause power supply in a short temporarily. Try to make the DVR not connect to the same circuit as the industrial machines.



(B) Display Problems



01: Why there is nothing displayed on the monitor or the display keeps shaking?



01: 1.Check if the power is on or not. If the power is on, the power light at the front panel should be on. 2.Check the display mode. It can display VGA/CVBS/HDMI at the same time. Please check if you have connected video input. If not, VGA/CVBS/HDMI will all displaying nothing.



02: Why my DVR display images that seems to be interfered, and like water wave shape?



02: 1.Please check if the video cable has well connected. 2.Check if there are strong electricity current around the video cable. Please don't put video cable together with electricity cables to avoid interfering. 3.Please check if the DVR case is well grounded. Only connect the case to ground by the screw on the back panel, while no other points connect to ground. 4.Please check camera, monitor and video cables if they are aging.

? 03: Why both the live display image and playback image are not showing the true color?

👉 03: Please check if you have set the parameters well. (Please refer to chapter 4.7.3 for details)

? 04: Why my DVR displays distorted images on VGA monitor or cannot make full screen display?

👉 04: 1.Please check if your VGA monitor is well set up. 2.Change your VGA monitor settings till make it full screen.

? 05: Why my DVR system shows disordered color?

👉 05: 1.Please check you VGA data line, as well as connection condition between DVR to VGA monitor.
2.Check if the DVR system has overheat.

? 06: I started my system seeming to be successful, but there was a certain channel displaying nothing, neither caption. Why?

👉 06: Please make restore to factory default settings.

? 07: Why it displays mosaics when playback?

👉 07: 1.Check the recording parameter setting. If the recording parameter is set too low, it can influence the image quality and cause mosaics.
2.If bad sectors exist in the HDD, it might cause mosaics when playback. Users need to check HDD.

|||| User Manual 

NOTES:

SDE72X3-B1218