

Network Speed Dome Camera Quick Operation Guide

Operation Method

1. Network speed dome camera connection method

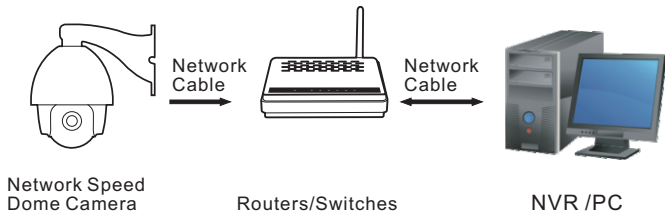
Network speed dome factory setting IP address: 192.168.0.200,

User Name: admin

Password: admin

Normal working voltage: DC12V±10%.

Network speed dome camera connection as below:



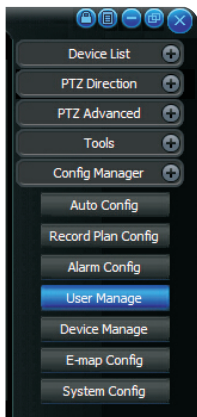
2. Search and Modify the IP address

Network speed dome camera quickly visit can use the supporting software, the search function of the client. Use this search function can auto search the IP address of the network speed dome camera in a same LAN.

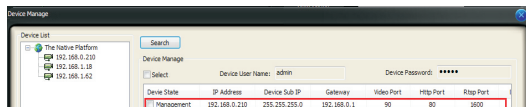
Search and modify the network speed dome camera IP address steps as below:

1. Install CMS software, run HCMS;

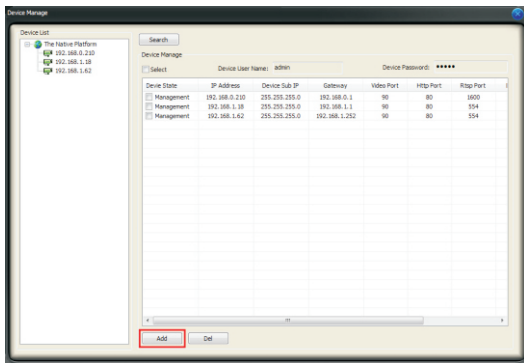
2. Click "Device Management" enter into device management;



3. Click Searching Online Devices



4. Click online devices, then can search all the IP device in the same network segment, please select the needed one and add it.



Visit via IE

Network speed dome camera support multi-browser visit way, such as IE browser, Firefox browser and so on.

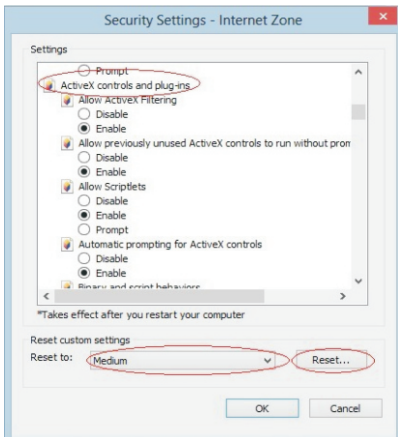
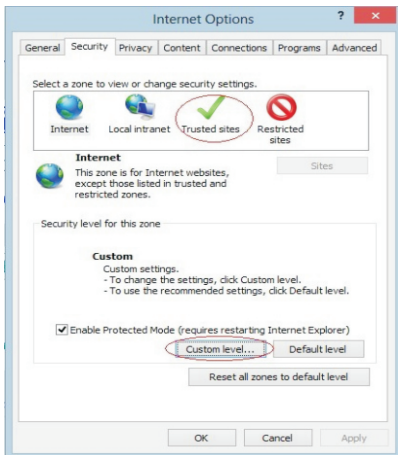
Note:

1. Require IE control support IE7, IE8 or IE9.
2. Through IE visit set device parameter, all input do not support "<" ">" "%" and "&".

Pre-view image

Through IE browser can pre-view the network speed dome camera image operation steps as below:

1. Open IE browser, please select "Enable" or "Prompt" on the plug of "ActiveX control and plug" in [TOOL/SAFETY/Custom Level(C)...], also please set the security level: LOW.



2. Input the network speed dome camera IP address, then click "Enter" will appear browser login screen. Input network speed dome camera's "user name" (default: admin) , "password" (default: admin) , click "Login" in the browser login screen.
3. First enter into the login screen will show "install the corresponding plug-in" please click to install plug-in.

After successfully login will show the page as below:

