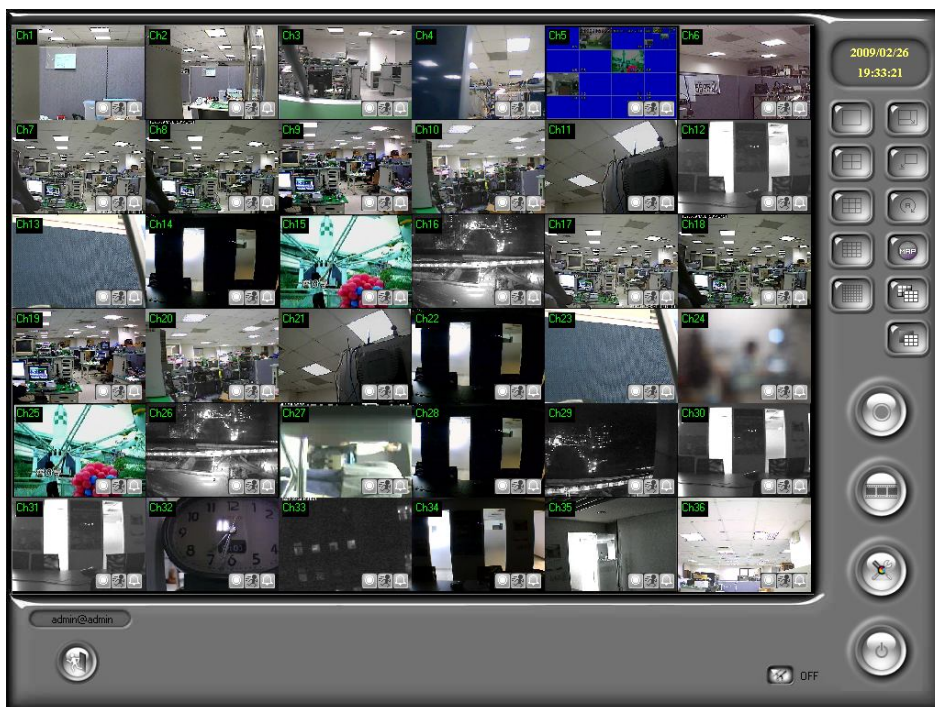


Instrukcja obsługi

IPCamera recorder



Spis treści

I.	PREFACE.....	4
II.	SYSTEM REQUIREMENTS.....	4
	A. MINIMUM REQUIREMENTS	4
	B. SUGGESTED REQUIREMENTS	5
III.	PROGRAM INSTALL AND UNINSTALL	5
	A. PROGRAM INSTALL	BŁĄD! NIE ZDEFINIOWANO ZAKŁADKI.
	B. UNINSTALL	8
IV.	SET UP FRONT-END DEVICE & HDD.....	8
	A. SET UP IP CAMERA/ VIDEO SERVER / DIGITAL VIDEO RECORDER	8
	B. SET UP HDD TO RECORD THE VIDEO	14
V.	LIVE VIDEO MONITORING.....	16
VI.	VIDEO PLAYBACK.....	19
	A. VIDEO PLAYBACK.....	19
	B. EXPORT VIDEO	21
VII.	DIGITAL ZOOM	22
VIII.	E-MAP.....	23
	A. MAP	23
	B. TREE VIEW.....	24
	C. EVENT RECORD.....	24
IX.	REMOTE CONTROL	25
	A. WEB SERVER	25
	B. REMOTELITE	31
X.	OTHERS	33
	A. SCHEDULE RECORD SETTING	33
	B. MOTION DETECTION.....	34
	C. PTZ SET UP AND CONTROL	34
	D. I/O SETUP	36
	E. MOTION/ ALARM EVENT SETUP	36
	F. SYSTEM	38
	G. PASSWORD SETUP	44

H.	E-MAP SETTING	45
XI.	CONFIGURE TOOL	47
A.	MONITOR RESOLUTION (DEFAULT: ON)	47
B.	ENABLE/ DISABLE “WINDOW CONTROL” (DEFAULT: OFF).....	47
C.	ENABLE/ DISABLE “PC TIME” (DEFAULT: ON)	48
D.	ENABLE/ DISABLE “PING” (DEFAULT: OFF)	48
E.	ENABLE/ DISABLE “OVERLAY” (DEFAULT: ON)	48
F.	BACKUP CONFIGURATIONS	49
XII.	PRODUCT SPECIFICATIONS.....	50
XIII.	GRAPHIC CARD TEST TABLE.....	53

I. Preface

IPCamera Recorder (includes 1,4,9,16 and 36 channels) is a video recording software which supports IP Camera, Video Server and Digital Video Recorder. People use IPCamera Recorder to monitor the real-time video, record the video on PC then playback the recorded video when necessary.

IPCamera Recorder supports 5 different ways to record the video, including normal recording, schedule recording, motion-triggered recording, alarm-triggered recording and manual recording. Moreover, E-Map and Multi-Monitor are the build-in functions within IPCamera Recorder.

Via activating the function of web server, IPCamera Recorder provides web browser and RemoteLite program for user demand.

II. Wymagania systemowe

A. Wymagania minimalne

- i. CPU: Intel Pentium 4 2.0G
- ii. Pamięć: 1GB
- iii. Karta graficzna: 128MB
- iv. Monitor: 1024 x 768
- v. System operacyjny: Windows Vista/ XP / 2000
- vi. System plików: NTFS*


(*NVR może pracować ze starym systemem plików FAT32. Jednakże, polecamy jednak stosować nowszy i bardziej pewny system plików).

B. Sugerowana konfiguracja

- i. CPU: Intel Core 2 Quad Q6600
- ii. Pamięć: 2GB
- iii. Karta graficzna: 256MB
- iv. Monitor: 1024 x 768
- v. OS: Windows Vista/ XP/ 2000
- vi. System plików: NTFS

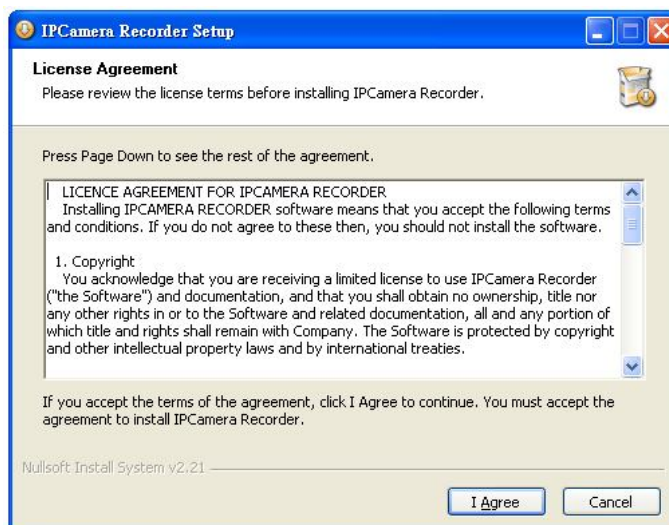
III. Instalacja i deinstalacja oprogramowania

A. Instalacja

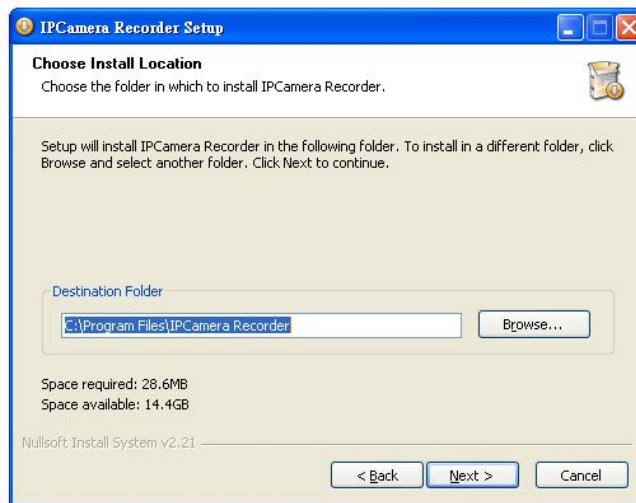
- i. Aby zainstalować „IPCamera Recorder” podwójnie kliknij : 
- ii. Wybierz język. Dostępny jest również język polski.



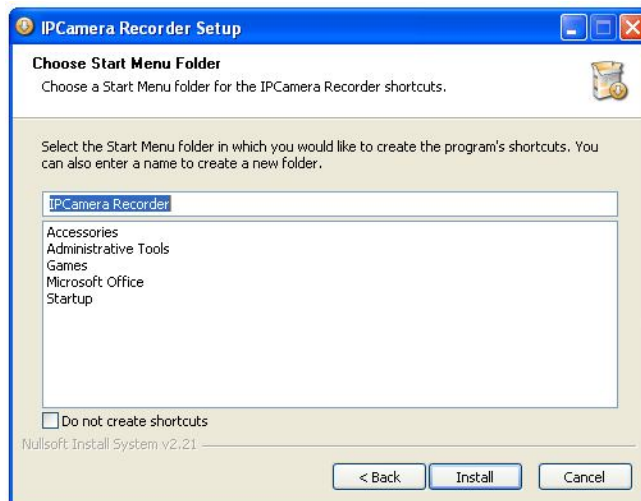
- iii. Umowa licencyjna. Wybierz: “I Agree”, aby przejść dalej.



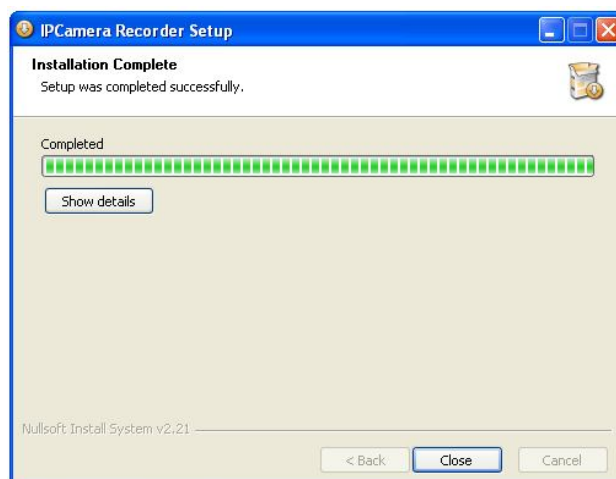
- iv. Wybierz katalog docelowy instalacji oprogramowania „IPCamera Recorder” na dysku twardym. Domyślny katalog instalacji to: "C:\Program Files\IPCamera Recorder". Następnie kliknij “Next”.



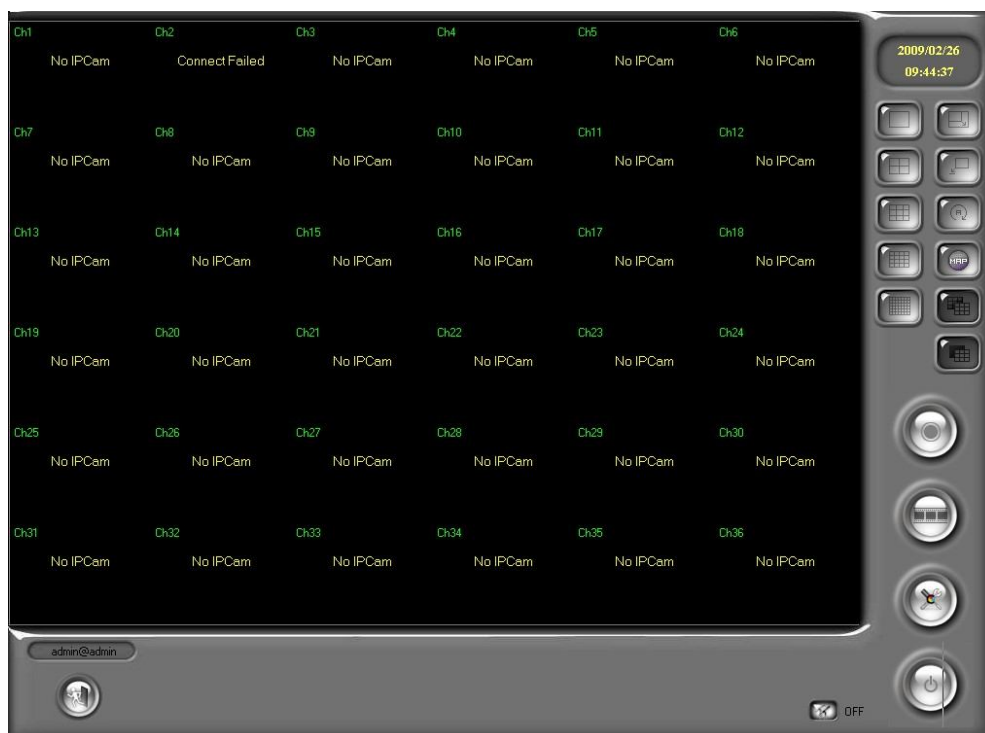
- v. Wprowadź nazwę folderu docelowego. Domyślna nazwa to “IPCamera Recorder”. Kliknij “Install” aby rozpocząć instalację





- vi. Po zakończeniu instalacji, naciśnij przycisk “Close”, aby zakończyć.



- vii. Aby uruchomić program, wybierz na pasku "Start" → "Programy" → "IPCamera Recorder" → "IPCamera Recorder".
 W Windows Vista, proszę kliknąć prawym przyciskiem na ikonie (skrótce) programu „IPCamera Recorder” a następnie wybierz: "Uruchom jako administrator".
 Poniżej przedstawione okno przedstawia oprogramowanie w wersji 36H IPCamera Recorder.



- viii. Można wyświetlić dodatkowe okno dzięki podłączeniu drugiego monitora
- ix. Okna programu będą wyglądać niemalże identycznie jednak mogą wyświetlać inne kanały video.
- x. Jeżeli opcja wielu monitorów nie jest osiągalna sprzętowo dla wybranego PC, tryb multi-monitor  oraz multi-monitor ON/OFF  będą nieaktywne.

B. Deinstalacja

- i. Aby odinstalować oprogramowanie, kliknij pasek "Start" → "Programy" → "IPCamera Recorder" → "Uninstall".



IV. Konfiguracja i ustawienia

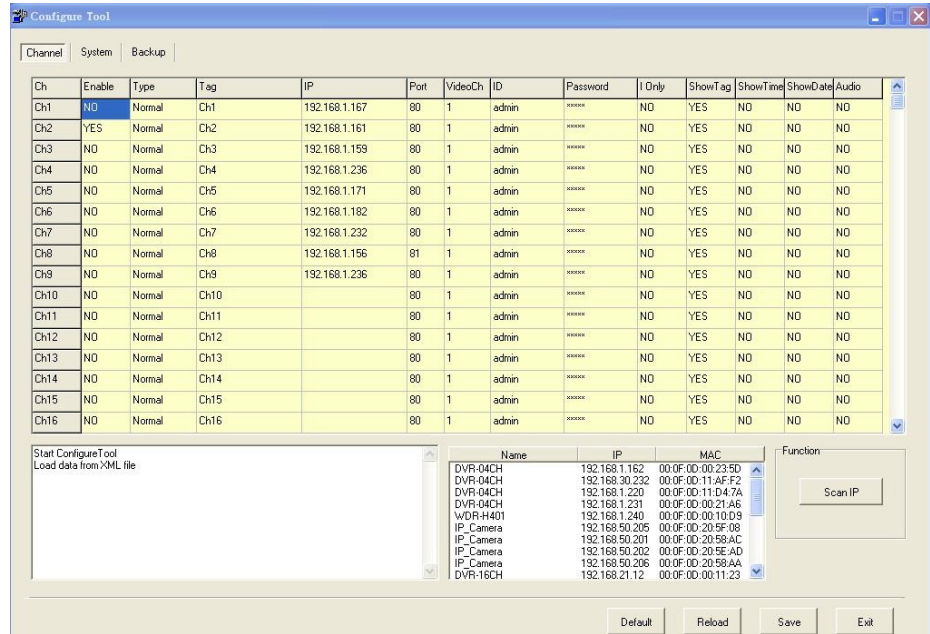
Aby rozpocząć korzystanie z urządzenia należy najpierw skonfigurować oprogramowanie IP camera/ Video server oraz HDD.

A. Ustawienie IP Camera/ Video

Server / Digital Video Recorder


Są dwa sposoby konfiguracji IP Camera/ Video Server

- i. Configure Tool
 - a. Kliknij pasek "Start" → "Programy" → "IPCamera Recorder" → "Tools" → "Configure tool". W Windows Vista, proszę kliknąć prawym przyciskiem myszki na ikonie (skrótce) a następnie wybierz "Uruchom jako administrator", aby uruchomić program.



- b. "Configure tool" zawiera w sobie "IPInstaller". W momencie uruchomienia "Configure tool", wyszuka ono kamery IP oraz serwery video automatycznie. Aby ponownie wyszukać urządzenia, proszę kliknąć przycisk "Scan IP"
 - c. Wybierz Kamerę IP / video server, który chcesz dodać. Przeciągnij i upuść wyżej wyświetlony kanał video a następnie wprowadź nazwę użytkownika oraz hasło dostępu do urządzenia
 - d. Po zakończeniu konfiguracji, kliknij "Save" aby zapisać wszystkie zmiany
- ii. Ustawienie Kamery IP / video servera za pośrednictwem strony administracyjnej (zarządzania)




- a. Wybierz  aby wejść na stronę zarządzania kamery IP / video servera

Uwaga: Poniższe przykładowe obrazki przedstawiają wersję oprogramowania 36kan IPCamera Recorder


- b. Po lewej stronie strony zarządzania wyświetlone jest 18 kanałów.

Użytkownik może używać   aby przełączać między kanałami 1-18, 19-36. Ponadto, użytkownik może wprowadzać

dane z klawiatury PC lub kliknąć  aby aktywować wirtualną klawiaturę obsługiwaną myszką.



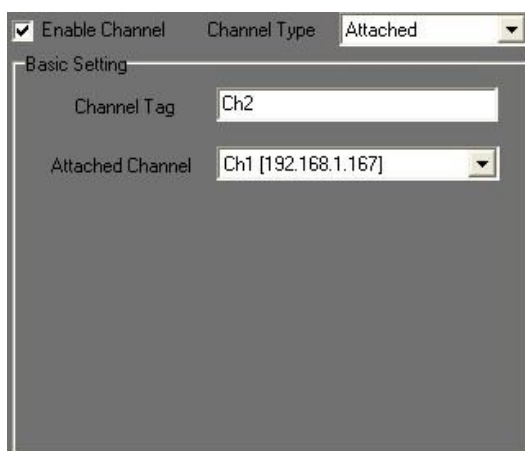
- c. Kamera może być skonfigurowana w głównej stronie ustawień.

Najpierw należy kliknąć , aby aktywować każdy kanał i ustawić każdą kamerę

- d. Wybierz typ kanału (Normal lub Attached):

Normal: identyczny jak na głównej stronie ustawień

Attached: Jeżeli użytkownik wybierze rodzaj kanału „attached” (doczepiony), musi on wybrać źródło sygnału video. Co więcej, jako że, „doczepiony” kanał nie jest fizycznie powiązany z żadną kamerą; nie będzie żadnego przepustowości łącza nie będzie obciążana wczytywaniem.



Zastosowania „doczepianych” kanałów: Ten rodzaj kanału może być powiększany zoomem cyfrowym. Użytkownik może wybrać różne punkty w obrębie głównego kanału i doczepić je jako różne „doczepione” kanały. Jako, że „doczepiony” kanał nie jest fizycznie, bezpośrednio powiązany z żadnym źródłem sygnału, taki kanał nie będzie wymagał dodatkowego wczytywania ani miejsca na dysku. Przykładowo, poniższy obrazek przedstawia kanały 2, 3 oraz 4, które są jedynie trzema częściami wydzielonymi z kanału 1.



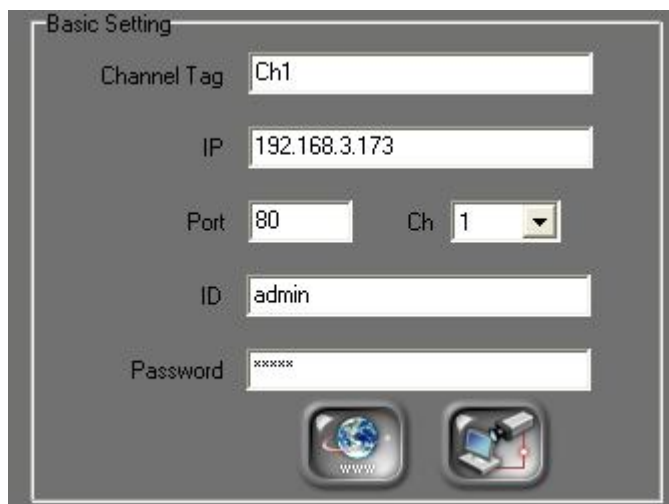
- e. W niżej przedstawionych podstawowych ustawieniach, nazwa kanału może być zmieniona w “Channel Tag”, aby odróżniać kanały od siebie. Adres IP wskazuje na kanał. Przy współdzielonym IP (router), należy skonfigurować porty aby uniknąć konfliktów. Wprowadź ID oraz Hasło dla każdego kanału, a następnie kliknij



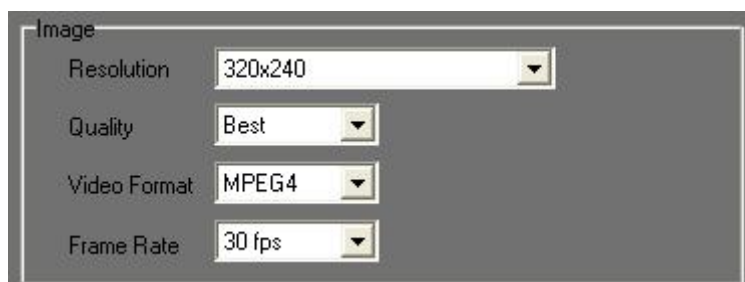
, aby podłączyć każde urządzenie bądź kanał. Kliknięcie



umożliwi przeglądanie każdego z kanałów za pomocą przeglądarki IE.



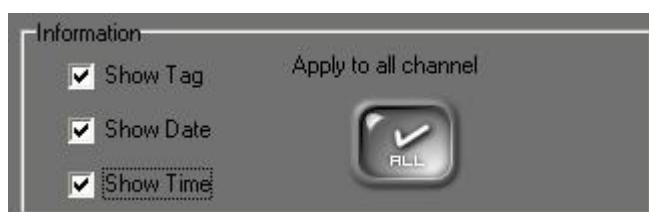
- f. Poniższy obrazek przedstawia okno konfiguracji, w którym można ustawić parametry obrazu Rozdzielczość, Jakość, Format video, oraz Frame Rate.



- g. Na poniższej przedstawionym oknie menu można In the Pre & Post Alarm Recording setting page as showed below, users can change the recording time interval.



- h. Na poniższej przedstawionym oknie menu można ustawić które elementy OSD będą wyświetlane na ekranie podczas podglądu na żywo (Tag / Date / Time)



- i. Na poniżej przedstawionym oknie menu można ustawić parametry wyświetlania



Zaznaczenie opcji Display I frame only, spowoduje, że jedynie I-Frame będzie przesyłane oraz wyświetlane w podglądzie na żywo;

Zaznaczenie opcji Disable Digital Zoom spowoduje, że w podglądzie na żywo wyświetlany będzie jedynie obraz oryginalnego rozmiaru (taki jak poniżej).




- j. Zaznaczenie poniżej przedstawionej opcji w menu Audio: "Enable Audio" aktywuje rejestrację dźwięku razem z obrazem video




- k. Przed wyjściem ze strony ustawień, pamiętaj aby kliknąć przycisk



aby zachować ustawienia.

- l. W zaawansowanych ustawieniach  można ustawić takie rzeczy jak: **tag**, **Data/Godzinę** oraz **status lokacji** dla każdego z


kanałów. Kliknij  aby ustawić takie parametry jak rozmiar, format i kolor tagów, Daty/Godziny oraz statusów.

UWAGA: Zaawansowane ust. dotyczą wszystkich pokazanych kanałów.

B. Konfiguracja dysku twardego

Zanim zaczniesz się rejestrować obraz na komputerze PC, najlepiej wcześniej odpowiednio przydzielić przestrzeń dysku twardego. W przeciwnym razie, **IPCamera Recorder** będzie rejestrował nagrania wg ustawień domyślnych. (bazując na przestrzeni dyskowej).

- i. Uruchom program, wejdź na stronę zarządzającą a następnie kliknij


przycisk  aby wejść na stronę konfiguracji dysku twardego

- ii. Domyślnym ustawieniem miejsca ulokowania nagrań na dysku twardym jest folder Record ulokowany w folderze instalacji oprogramowania. Co więcej, przestrzeń dyskowa dostępna na nagrania ustawiona jest domyślnie jako „Bez Ograniczeń”.

Path	Used(MB)	Free(MB)	Available(MB)	ReadOnly
C:\Program Files\IPCamera Recorder\Record	0	3,489	No Limitation	N
		0	No Limitation	N

- iii. Jeżeli chcesz zmienić miejsce docelowe przechowywania nagrań na

dysku twardym, kliknij przycisk . Aby usunąć obecnie używane,

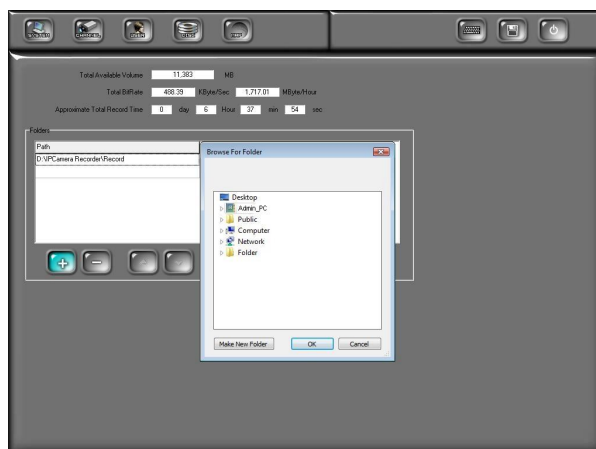
przypisane miejsce na dysku naciśnij przycisk .





- iv. Aby dodać nową ścieżkę dostępu miejsca zapisu nagrań na dysku


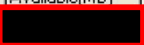
naciśnij przycisk .

- v. Następnie, użyj myszki aby wyszukać odpowiedni folder i kliknij przycisk

. Ukazze się ekran jak poniżej.









- vi. Po zakończeniu ustawiania ścieżki dostępu do folderu nagrywania, klikaj  /  (Góra i Dół) aby ustawiać sekwencję (kolejność wyboru) pomiędzy różnymi katalogami nagrań. W przypadku przekroczenia objętości dyskowej (zapełnienia) dane będą automatycznie rejestrowane w innej (kolejnej z listy) lokacji.
- vii. Aby przydzielić ilość dostępnego miejsca na nagrania, kliknij w ścieżkę dostępu. Następnie, klikaj  /  aby przydzielić miejsce dostępne na nagrania "Available (MB)". Można również wprowadzić objętość za pomocą klawiatURY.





Path	Used(MB)	Free(MB)	Available(MB)	ReadOnly
	961	4,243		N
		0	No Limitation	N

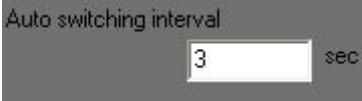

- viii. Na koniec, kliknij  aby zapisać dokonane zmiany.





V. Monitoring na żywo

- i. IPCamera Recorder posiada następujące tryby monitoringu na żywo :

- a. Dostępne są następujące tryby : can switch 36-KAN ,
16-KAN , 9-KAN , 4-KAN , 1-KAN  oraz
wielo-monitorowy  (16-KAN każdy).

- ii.  : Włączenie/Wyłączenie trybu wielomonitorowego
- iii.  : Tryb pełnoekranowy. Aby wyjść z tego trybu, naciśnij klawisz “Esc” lub prawy przycisk myszki
- iv.  : Minimalizacja aplikacji
- v.  : Kanał sekwencyjnego podglądu. Użytkownik może ustawić

czas przełączania  oraz określić tryb podziału
ekranu .

- vi.  : Ręcznie aktywowane nagrywanie. Ponowne kliknięcie stopuje.
- vii.  : Odtwarzanie nagrań video
- viii.  : Wejście na stronę ustawień
- ix.  : E-Mapa



x. : Zamknięcie aplikacji



xi. pokazuje statusy kanałów



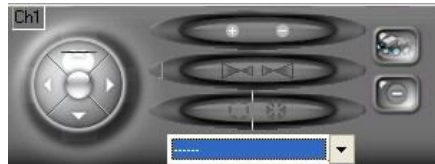
Proces nazywania aktywny



Detekcja ruchu



Alarm wykryty



xii. : Interfejs PTZ. Zawiera takie funkcje jak: Focus, Zoom, IRIS, Auto/ Stop Patrol oraz wywoływ. pozycji preset.



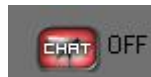
xiii. : Panel sterowania DVR. Gdy wybrany kanał jest DVR, wyświetli się panel sterowania DVR, dający dostęp do takich funkcji jak podział ekranu, odtwarzanie itp.



xiv. : Panel sterowania cyfrowym zoomem. Po wybraniu kanału, pojawi się dodatkowe okno wraz z suwakiem do regulacji cyfrowego powiększenia (Zoom +/-).



xv. : Przełącznik I/O. Dostępnych jest maksymalnie 4 przełączniki I/O (jeżeli zdalne urządzenia są kompatybilne w tym zakresie)



xvi. : Przełącznik czatu On/Off - 2-stronna komunikacja audio (jeżeli zdalne urządzenie jest kompatybilne w tym zakresie).




xvii. : Przełącznik broadkastu On/Off (jeżeli zdalne urządzenie jest kompatybilne w tym zakresie).

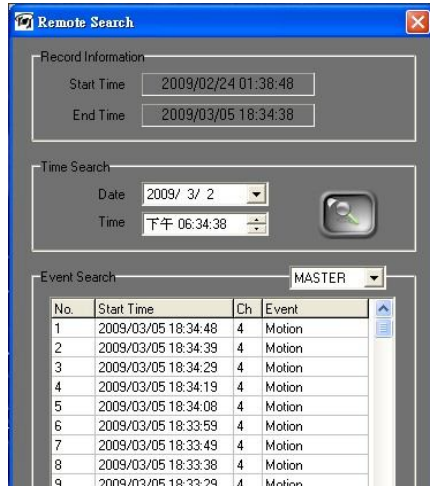
xviii.



: 04CH MPEG4 DVR Panel sterowania DVR.

When selected channel is 04CH MPEG4 DVR module, the control panel

will reveal. Click  button can perform playback via time and event searches as following:



VI. Odtwarzanie Video



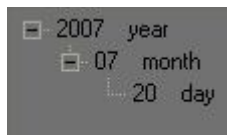
Kliknij aby wejść w tryb odtwarzania materiału video.



Uwaga: Poniższy przykład przygotowano na bazie 36kan. IPCamera Recorder.



A. Odtwarzanie Video

- i. Użyj kalendarza by wybrać datę. Jak widać na poniższym obrazku, konkretny „dzień” oznacza, że w ciągu tego dnia zarejestrowane zostały nagrania. W tym przypadku widać, że są nagrania dnia 2007/07/20.

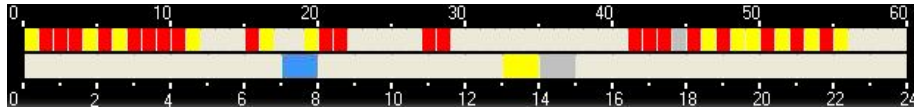








- ii. Po wybraniu daty, proszę kliknąć   to select the video channel you would like to play (36CH version).

1	2	3	4	5	6	7	8	9	10	11	12	13	14	15	16	17	18
19	20	21	22	23	24	25	26	27	28	29	30	31	32	33	34	35	36

IPCamera Recorder supports different kinds of playback mode. Currently, IPCamera Recorder supports up to four channels synchronized and asynchronous playback.

- iii. When choose the date and video channel, it will show the recording status.




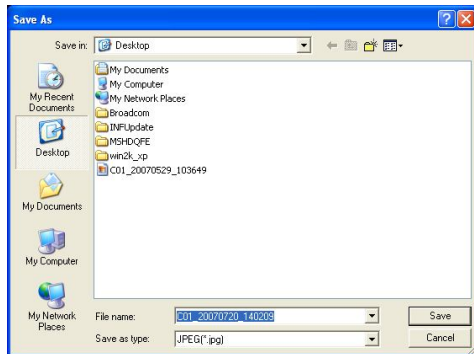
- a. No color: No video data.
 - b. Red: Normal recording data.
 - c. Yellow: Motion-triggered recording data.
 - d. Blue: Alarm-triggered recording data.
 - e. Gray: The time you choose to play.
- iv. Click  to start playback. Click  to pause it
 - v. Use   to fasten the speed. 1x, 2x, 4x, 8x, 16x and 32x available (depends on the hardware and total channels).
 - vi. Use   to go to previous/ next frame.
 - vii. Check “Asynchronize Play” to enable different time and channel playback.
 - viii. Check “Show tag”, “Show time” to show title & time on each channel.
 - ix. Check “Disable Digital Zoom” to see the original size of the video.
 - x. Check “Event List” to see the event records.

B. Export Video

Video data can be export as JPG or AVI format.


A. Export as JPEG format:

- i. Click . It will show the following dialogue box.

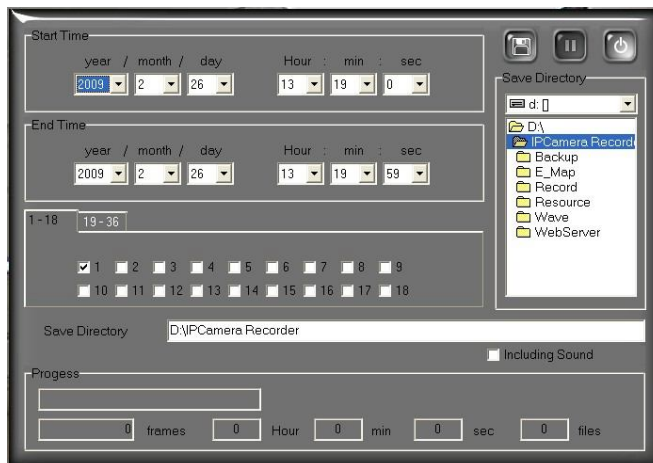


- ii. The filename will be “channel number_yyyymmdd_hhmmss.jpg”.

B. Export as AVI format


- i. Click . It will show the following dialogue box.

Note: The following figure is based on 36CH IPCamera Recorder. Different version may have different layouts.



- ii. Select “start time”, “end time”, “video channel”, and the directory to save

the video. Click  to start the procedure.

- iii. To record voice, please check “including Sound”. 
- iv. It exports the video into different AVI files for each channel if multi-channel have bee selected.

VII. Digital Zoom

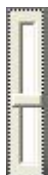
When enabling the digital zoom function, user can zoom in/out the image to get proper view. Digital zoom can be functionalized in live-viewing, playback viewing, second live-viewing and remote program. The following figures refer to the digital zoom panel.



There are three parts of the digital zoom panel.





- i. **Preview window:** The image or video in the preview window is not live, the image frame will be updated within a time interval. The red frame indicates the live-viewing window, and the number of the left-down corner indicates the zooming rate.




- ii. **Digital zooming bar:** By moving the control bar up or down, the live-viewing and preview window will be zoomed in or out. The zoom rate is from 100% to 1000%.
- iii. **Zoom status:** By un-check this function, the image or video will be displayed in the original size.

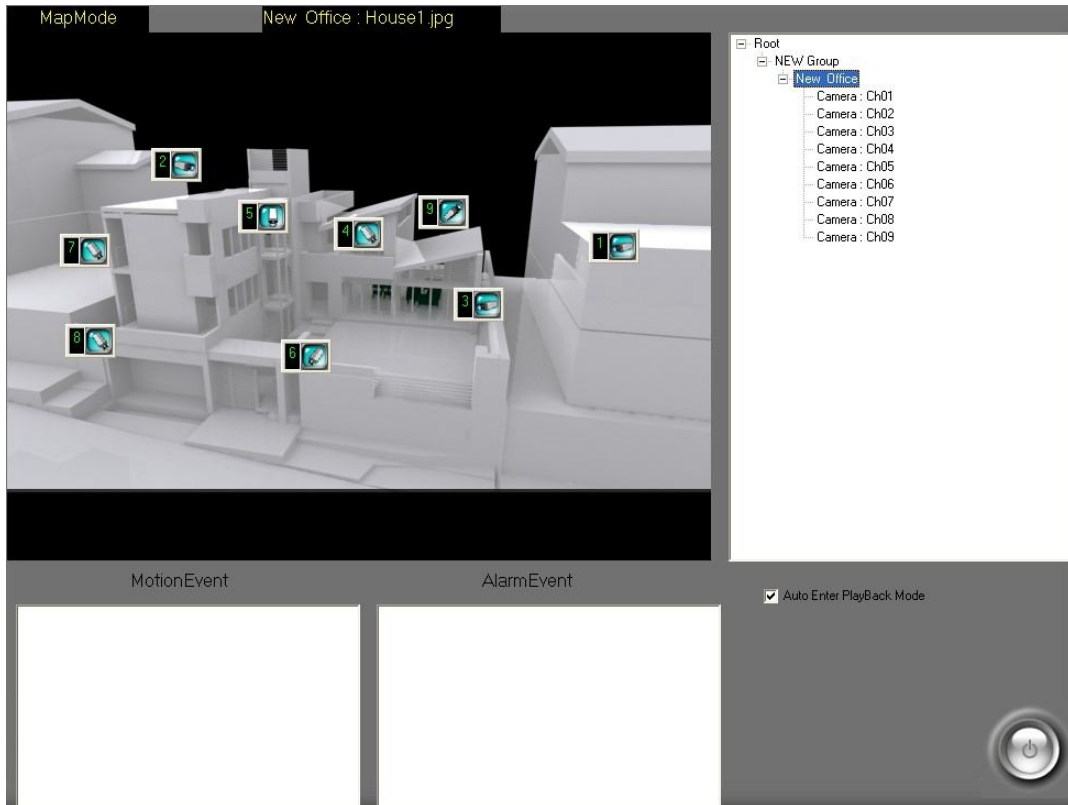
The default of the digital zoom is enabled. User can change the default by

clicking  in the main page and click  to enter the channel setup


page. Check **Disable Digital Zoom** to disable digital zoom control.

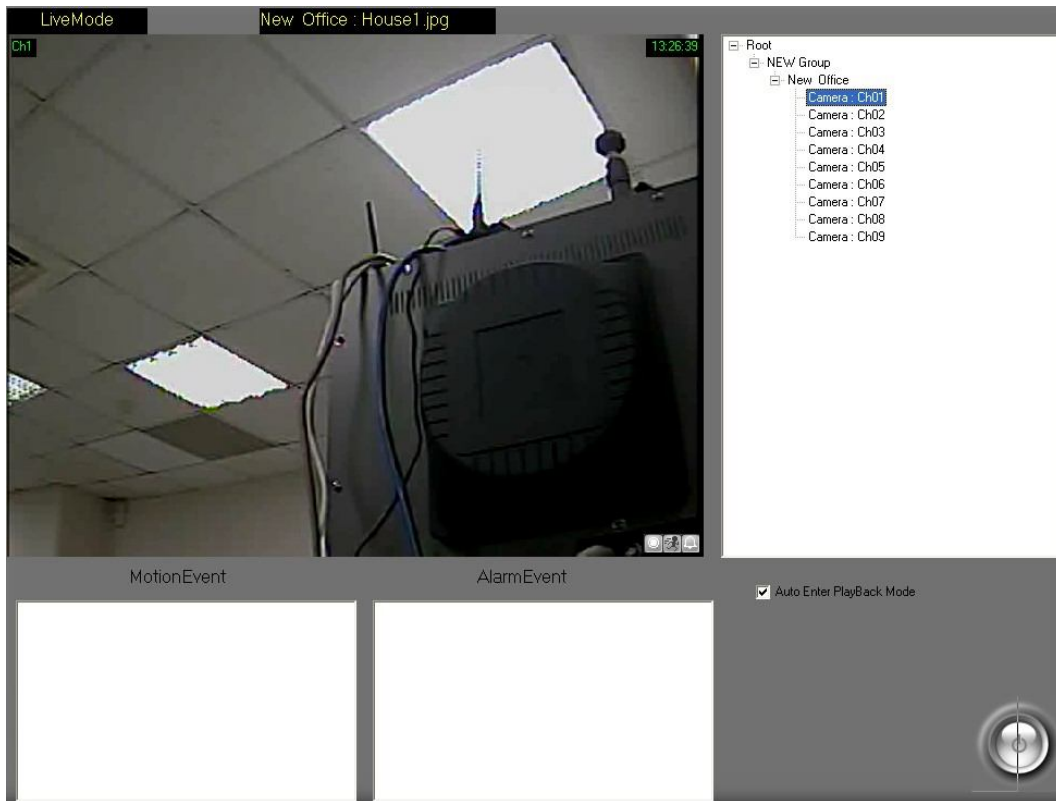
VIII. E-Map

Click  to enter E-map.



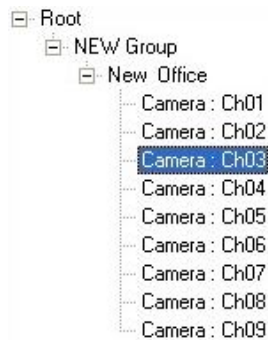
A. Map

The camera icon  and alarm icon will blink when motion or sensor are triggered. Double click the icon can see the live video if necessary.



B. Tree View

It will show the camera list on the right hand side of E-Map page. Double click the



camera to see the live video.


C. Event Record

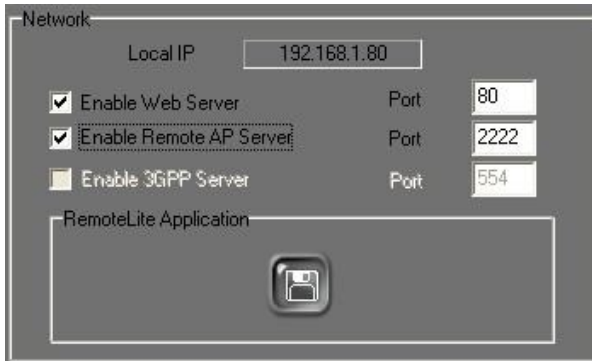
All the events (motion & alarm) will be listed on the bottom of this page. Selecting each specific event will trigger each event to playback.

IX. Remote Control

After activating the function of Web server, IPCamera Recorder provides web server browser and RemoteLite program for user's demand.




Enter the administrator page, please click  and activate web server within Network setting area which is shown in the following.



A. Web Server

Enable Web Server will allow web browser to connect to recording software server to monitor real-time image. Please refer to instructions in the following.

- i. Connection Method: In Windows Vista, please click right click on the IE web browser and select "Run as administrator" to start the program. For example, within Internet Explorer 7, input the address: <http://192.168.1.104/> (which is seen in above image ).
- ii. Connection Page: After successfully connected, the user will see the operating interface shown in the following:

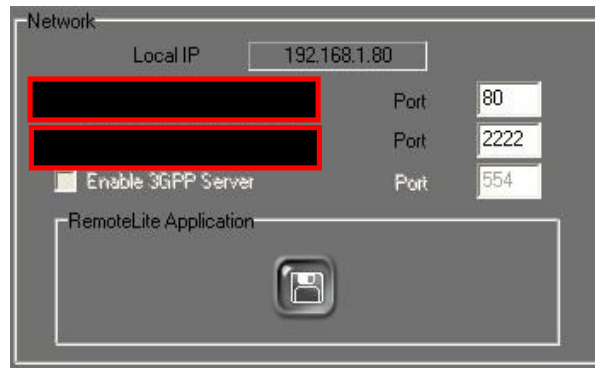


Remote Monitoring Options

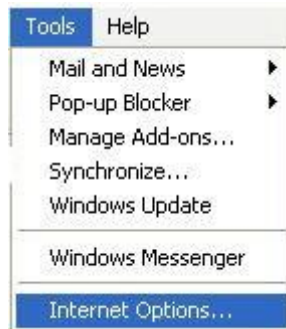
Online Monitoring

Upper-Left of the connection page shows the Language options, which includes "traditional Chinese", "simplified Chinese" and "English" options currently. The following are the remote monitoring options:

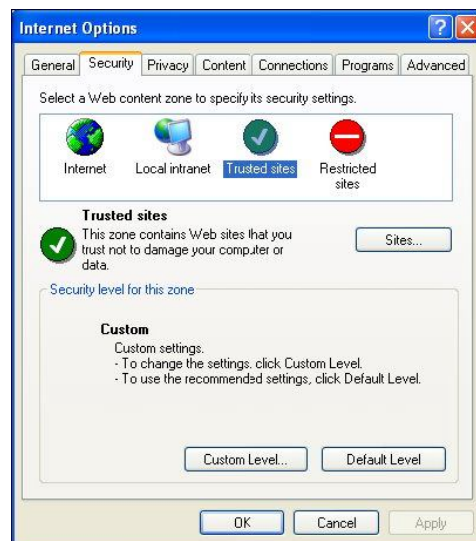
- iii. On-Line Monitoring: The function has to operate with "Remote AP Server" enabled. If the OS has installed Windows XP or Windows Vista, please perform the following internet options setting steps:



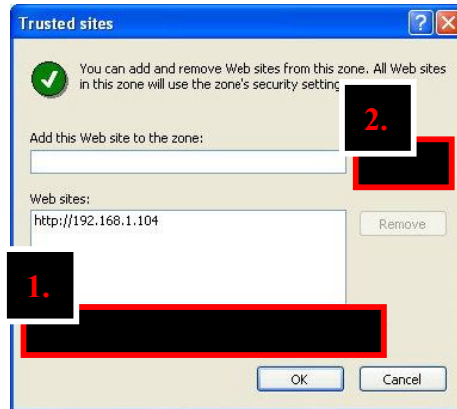
- a. Click the “Tools” → “Internet Options”



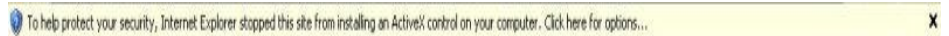
- b. Click “Security” → “Trusted sites”



- c. Click sites, then unclick the option in Step 1. Input the IP address of the recording software server in the “Add this Web site to the zone” area, then click “Add” button (Step 2) to complete the trusted sites list. Finally click “OK” to exit.



- d. After entering “Online Monitoring”, please click “information bar” when enter the first time. (The prompted information is normally located under the browser).



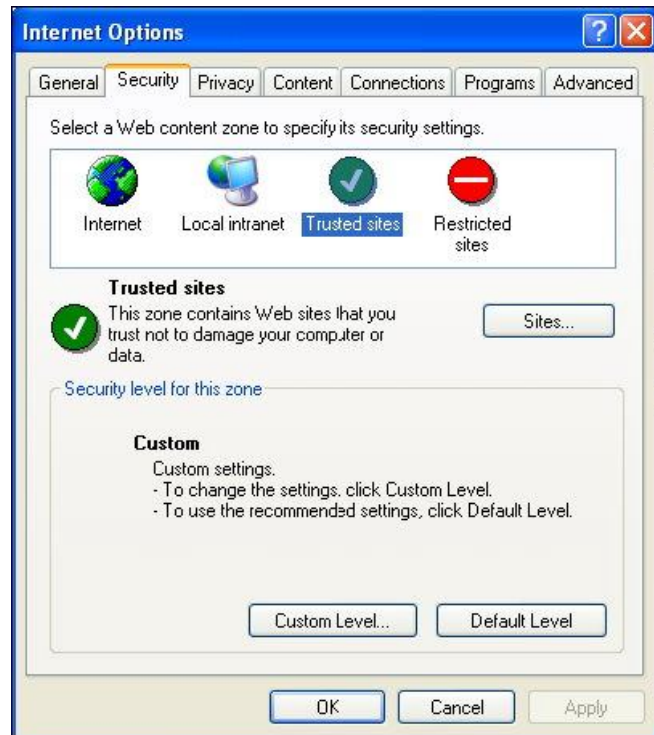
- a. Within the pop-up drop down list, please click “Install ActiveX Control...”.



- b. Click “Install” to perform the installation.



- c. If the installation does not work, please click “Tools” → “Internet Options...” → “Security” tag → “Custom Level”



Security Settings window will pop-up, and the user has to change the following options:

- Download signed ActiveX controls
 - Disable
 - Enable
 - Prompt→ Set for "Prompt"

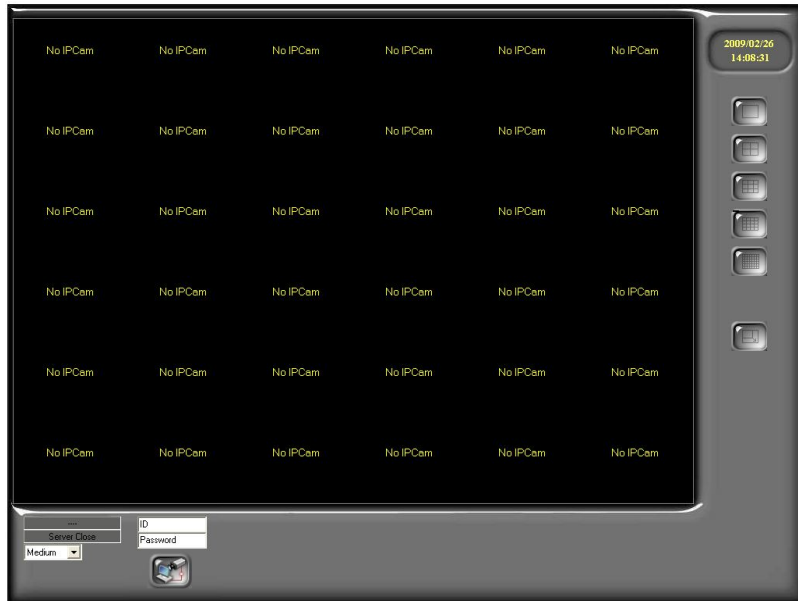
- Download unsigned ActiveX controls
 - Disable
 - Enable
 - Prompt→ Set for "Prompt"

- Automatic prompting for ActiveX controls
 - Disable
 - Enable→ Set for "Enable"

- Initialize and script ActiveX controls not marked as safe
 - Disable
 - Enable
 - Prompt→ Set for "Prompt"

After complete the setup, please repeat Step d~ Step f.

- h. After the installation, the online monitoring page will show as following:



- i. Input the correct User Name and Password , and



then click to connect with the camera.

- j. During the connection, the user can adjust the image transmission quality. .

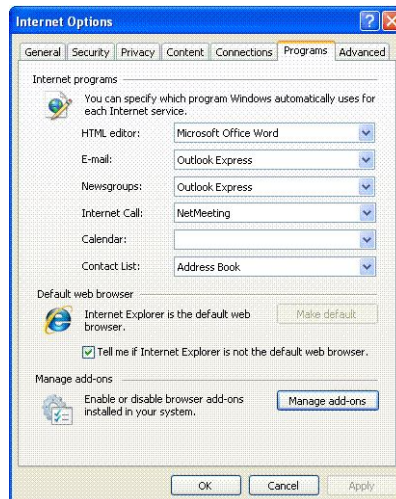
- iv. Remote Online Monitoring Control: Please refer the following steps to remove Online Monitoring software.

Internet Explorer 7 and Windows Vista :

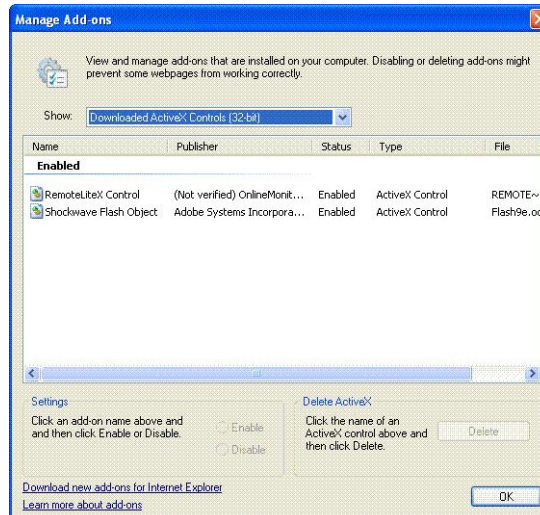
- a. Select "Tools" → "Internet Options..."



- b. Select “Programs” tag → “Manage Add_ons...”



- c. Select “Downloaded ActiveX Controls” option, and then choose “RemoteLiteX Control”, finally click “Delete” button and “OK”.

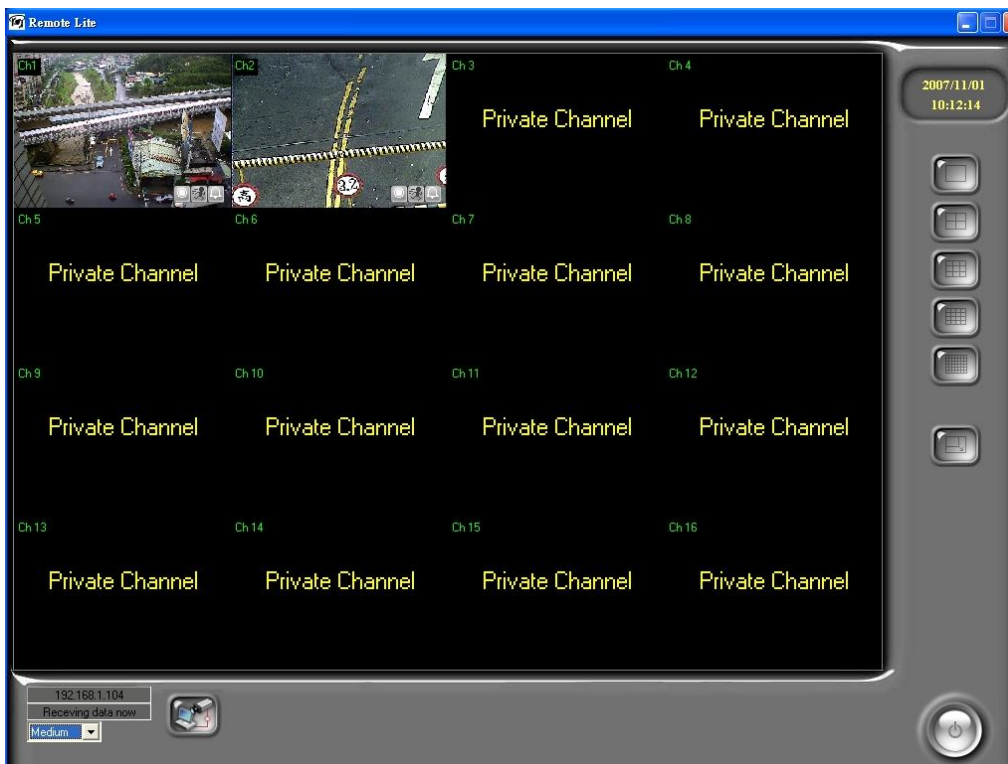


Internet Explorer 6、Windows XP or Windows 2000 :

- a. Open the OS installation folder, such as “C:\Windows” or “C:\WINNT”.
 - b. Open “Downloaded Program Files” folder.
 - c. Right-click the mouse on “RemoteLiteX Control” option and select “remove” to delete Remote Online Monitoring Control.
- v. Download the remote program: When select “Download remote program” from main page, the user can download the installation file of remote program.


B. RemoteLite

RemoteLite is a video recording software which is different from IPCamera Recorder. Basically, RemoteLite is designed for live-viewing only. It is not allowed user to playback or to change any setting. The RemoteLite is not installed within the IPCamera Recorder ; instead, it is exported from the IPCamera Recorder . User can select up to four channels to export. In Windows Vista, please right-click on the RemoteLite program, then select “Run as administrator” to start the program. Please refer to following example which is based on 36CH IPCamera Recorder.




RemoteLite supports multi-channel, full screen, and network connection setup.



Click  to get the connection. Moreover, user can select different transmission speed (Fast, Medium and slow). The speed of server will be the same as RemoteLite.

Export RemoteLite :

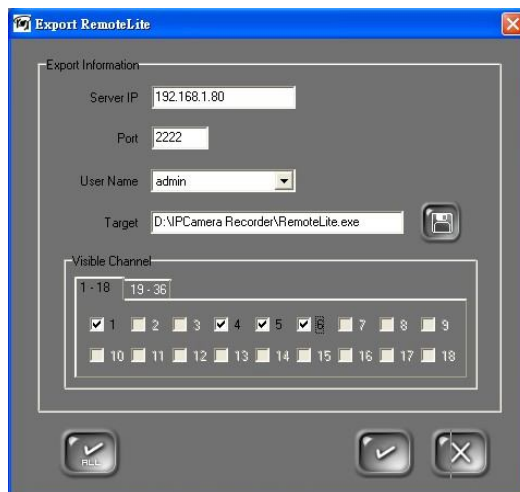
i. Get into administration page then click .

ii. Within "RemoteLite Application"






, please click  to open

RemoteLite setup page. Please refer to following figure. **Currently, there are up to 4 channels can be exported in RemoteLite program.**



- a. Sever IP : The network location of the server.
- b. Port : The access port of the server.
- c. User Name : The available names are preset by main program. User should have the authority to gain the access of the main program using RemoteLite.
- d. Visible Channel : User can select each channel intending to export (**Up to 04 CHs**). For instance, if user "only" selects 1 and 2 channels to export, then other channels will be the private channels. The user

can also click  to select all channels (**Up to 04 CHs**). In contrast, click  button again to cancel all selected channels.

- e. Note : After complete above setting, click  to save the exported program setting. The administrator can export different RemoteLites to match different users' demand. Finally, do not forget

to click  to export the RemoteLite.

X. Others

A. Schedule record setting

IPCamera Recorder supports different recording mode for different channel.



- i. Get into administration page. Click
- ii. Select channel to set up the schedule. Select “Schedule” tag.

Start Date	Time	End Date	Time	Mode
2007/9/6	11	2007/9/6	23	Motion

- iii. IPCamera Recorder supports 5 recording modes which is including general (red), motion detection (yellow), alarm detection (blue), motion with alarm detection (green), and no record (white).
- iv. Use mouse to select time then choose what kind of recording mode to use.



- v. Click to make all the channels using the same recording mode.

- vi. Besides daily schedule recording, IPCamera Recorder supports specific



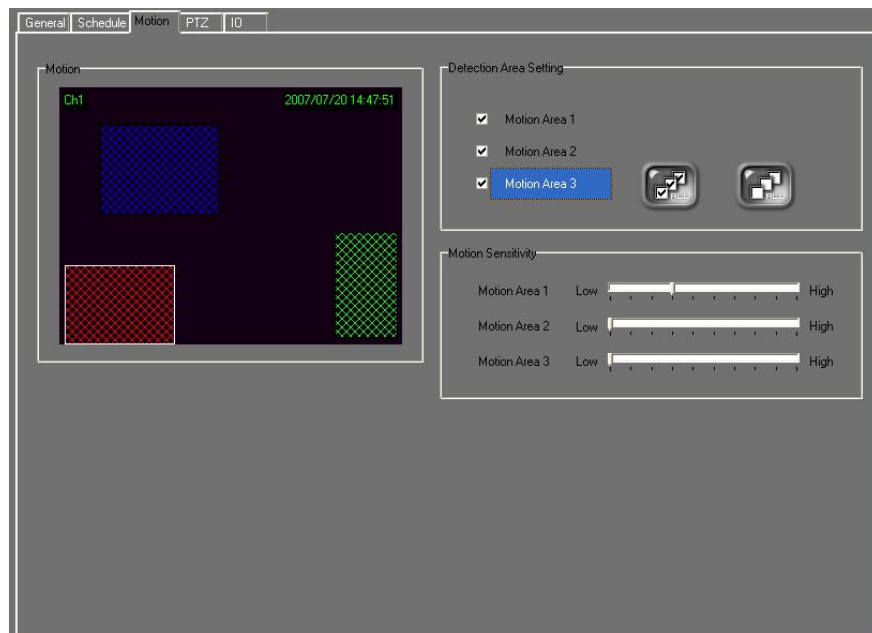
time recording. Determining start/end time then click to add to schedule. **Notice: Specific time recording has higher priority than daily schedule.**

B. Motion Detection

Each channel can set up 3 areas to detect to motion.



- i. Get into administration page. Click
- ii. Select channel to set up the motion, Select “Motion” tag.



- iii. Detection Area Setting: Click area, the use mouse to draw the area to detect motion.
- iv. Motion Sensitivity: adjust the sensitivity for each channel.

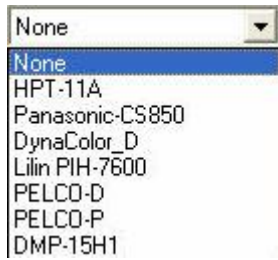
C. PTZ set up and control

IPCamera Recorder series supports remote PTZ control.



- i. Get into administration page. Click

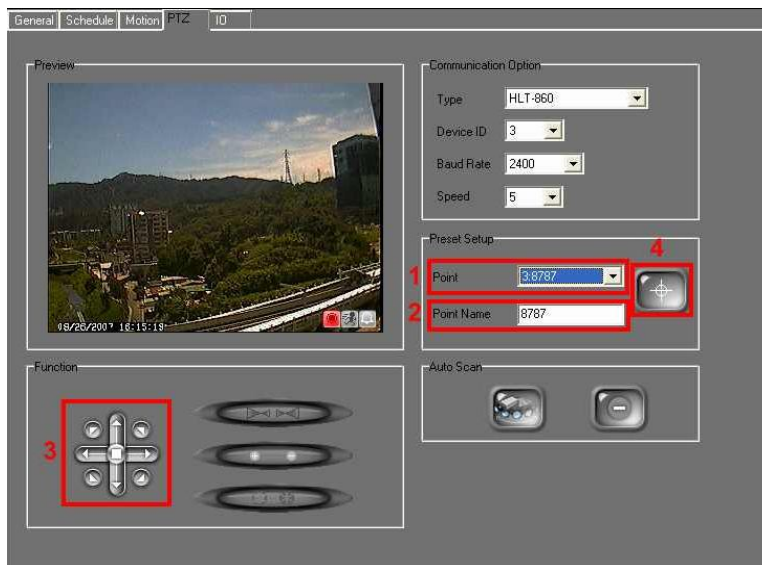
- ii. Select the channel which supports PTZ, Select “PTZ ” tag.



- iii. IPCamera Recorder series supports different PTZ protocols.
- iv. Make sure choosing the right protocol, ID, baud rate.




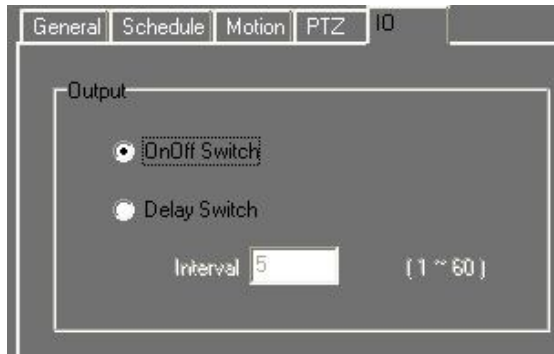
- v. Detecting point preset setup: Please refer to following figure.



- vi. When finish the PTZ setup, use the control panel to control the PTZ.


D. I/O setup

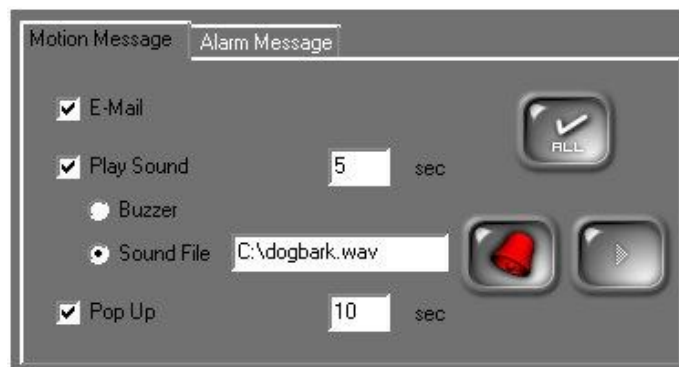
- i. Get into administration page. Click 
- ii. Select the channel which supports I/O, Select "IO" tag.




- iii. IPCamera Recorder series supports 2 types of I/O. Users can determine delay time interval from 1 to 60 seconds.
- iv. In the live-viewing, I/O interface may have different controller depending on each channel or remote device.

E. Motion/ Alarm Event setup

- i. Get into administration page. Click 
- ii. Select the channel which supports I/O, Select "IO" tag.



- iii. The response actions are shown in the following when motion and alarm are triggered.
 - a. E-Mail: Send the E-Mail. Please click  option first,



and then click

- b. Play Sound: Set up the time of play sound. (NOTE: 0 sec is represented the sound is continuing until the user clicks the triggered channel.) The user can select the sound from the buzzer



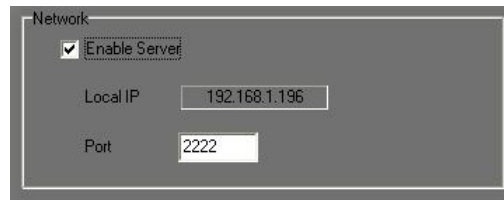
or the specific sound file by clicking



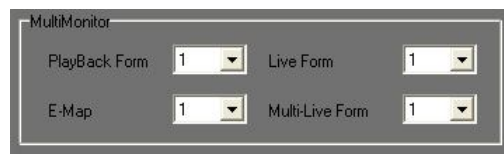
after complete the sound file setting, please click to test the selected sound file.

- c. Pop Up: If the selected channel is triggered, the program will pop-up and display the triggered channel in the full screen mode. Furthermore, the user can select the pop up time as well. (NOTE: 0 sec is represented the full screen of the triggered channel is continuing displayed and will not back to the split screen mode.)

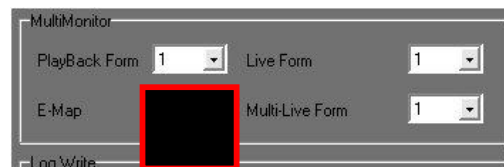
F. System



- i. Network setting : Click “ Enable Server” to enable remote device control. The port needed to be adjusted in case of conflict.



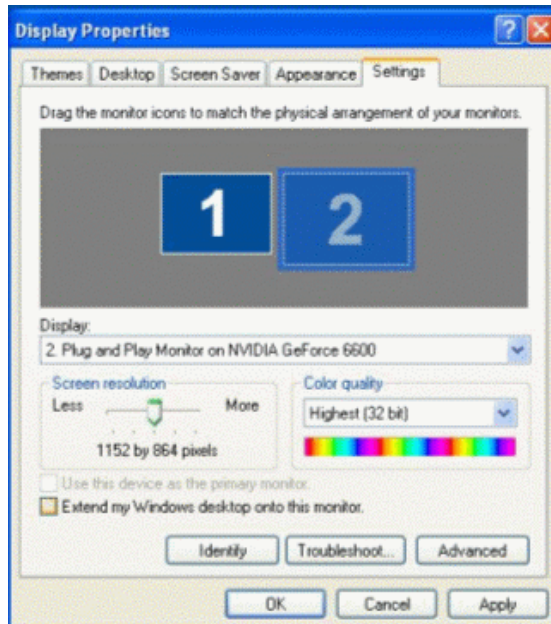
- ii. Multi-Monitor setting : Under the PC connects Multi-Monitors (it refers to exceed two monitors), the user can select what is displayed on the connected monitors. This function can be worked while the PC installs **graphic card which is supported Multi-Monitors*** and connects more than one monitor. Moreover, IPCamera Recorder series will detect the quantity of connecting monitors.



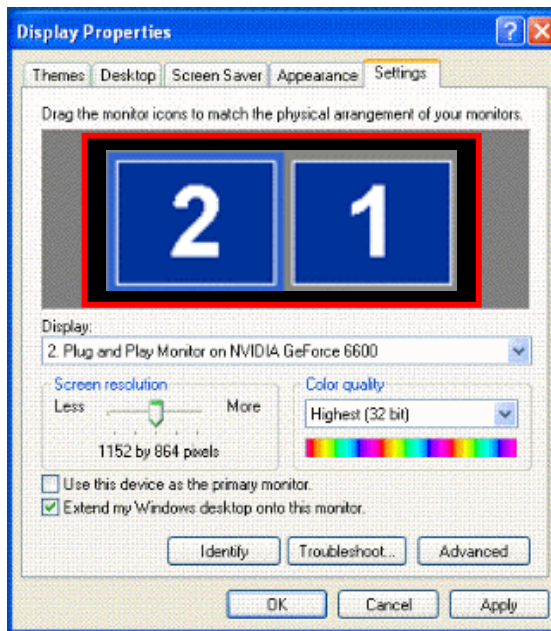
(* Normally, the graphic cards which is supported to Multi-Monitors are D-SUB + DVI interface and has to connect one D-SUB monitor and one DVI monitor. Moreover, some graphic cards will have DVI to D-SUB connector. Through the connector, the graphic card can support D-SUB + D-SUB interface and can connect two D-SUB monitors such as ASUS A9200SE. Nowadays, the higher level graphic card can support DVI + DVI interface, and has to connect two DVI monitors.)

It could be performed the following setting after connected multi-monitors and reboot the PC.


- a. Click the disable monitor number (i.e. No.2 in the following image.) and select “Extent my Windows desktop onto this monitor” option.

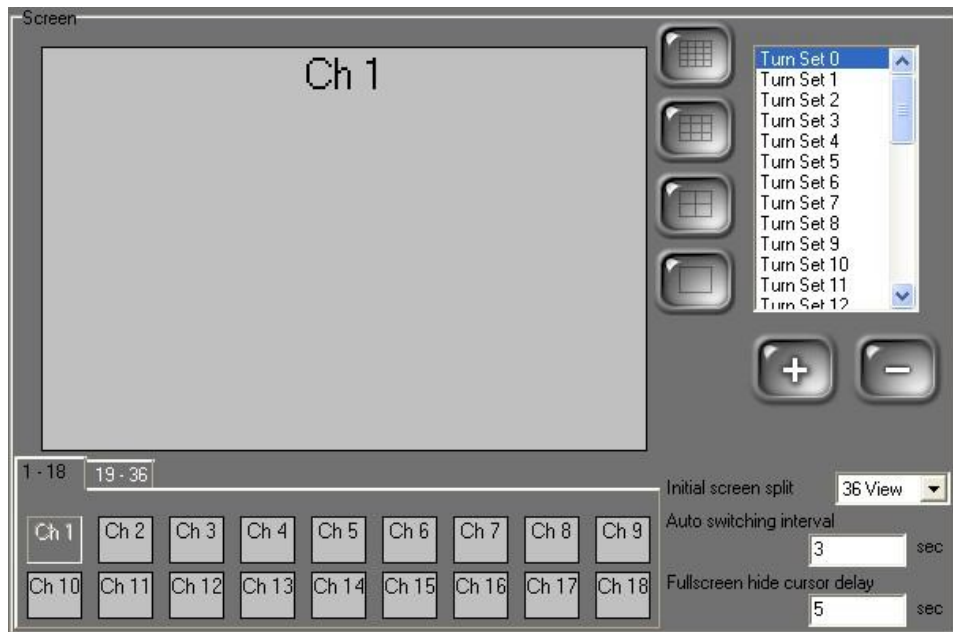


b. Drag and drop the monitor icon to correspond the actual monitor position.



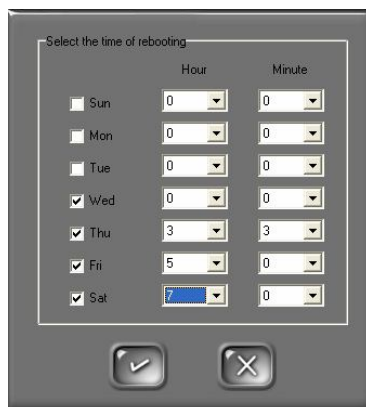
- iii. Log Write : Please select which log file to save.
- iv. Screen setup : Users can customize live-viewing by choosing different channels to swap. Please refer to following example,
 - a. 36CH version: For each split window, user can setup to 16CH, 9CH, 4CH and 1CH swap mode. In 36CH, there are up to 40 combinations.

- v. Please click  to enter screen setup page (based on 36CH version).



- vi. Keyboard Lock : Check Keyboard lock[Windows key enable/disable] to enable keyboard lock. By enabling this function, the application hotkey will be disabled (i.e. Ctrl + ESC、Alt + Tab、WIN and Alt+F4) to avoid illegal usage.

- vii. Windows reboot: Click  to set up the time to reboot Windows automatically. It will re-start the IPCamera Recorder automatically.



- viii. Program auto-run: Auto run the program on windows startup To run the program whenever the PC is reboot.

- ix. E-mail alert: When the motion is triggered, IPCamera Recorder sends the e-mail to some specific account.


d. Get into administration page. Click .

e. Check Enable E-mail.

f. Click  to get into setup page.





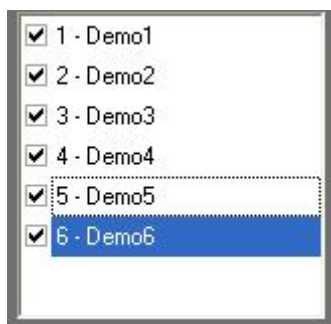
- g. E-MAIL setup page: To enable e-mail service, please fill in the name of SMTP server. To verify the user, please check SMTP server needs to verify, and fill in the user account and password.

Click  to test the e-mail service.


- h. The default value of "From" is IPCameraRecorder.
- i. Please fill in the e-mail destination address such as DemoTest@test.com.
- j. "Subject" and "Content" column: The title and the reminder of a triggered event.

k. Check Attach Image to attach the triggered event and image to the pre-set e-mail address.

l. In the e-mail setup page, click  to add more e-mail addresses to the sending list; or click  to delete from the sending list.



Attention: The E-mail server will not send the e-mail and the attachment if the check box of the sending list is unchecked.

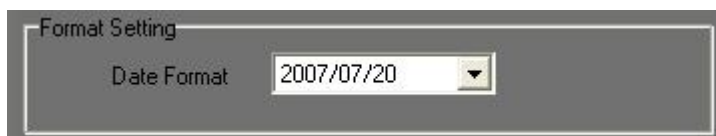
x. Auto Logout : Check Auto Logout , the system will automatically logout within the pre-set time  sec , if there is no keyboard or mouse event detected.

xi. HDD setup:
a. IPCamera Recorder series will overwrite the old data when the

HDD is full. Click  to enable/ disable this function.

b. Overwrite When Diskfull The default configuration of this function is enable.


xii. Date Format:






- a. There are 5 different date formats available
 - b. Please save the changes before exiting.
- xiii. Product Information:

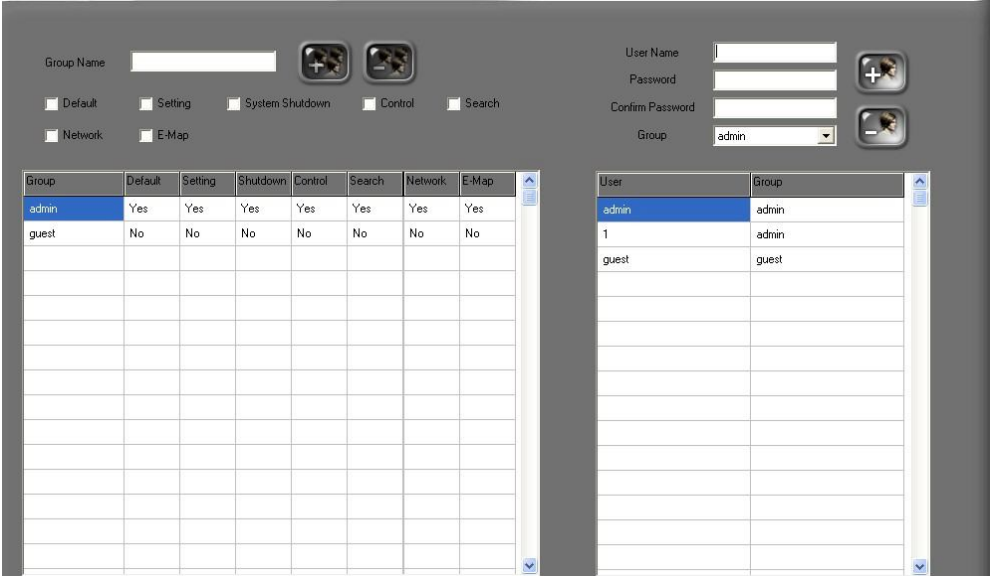


- a. Click  to show product information.

G. Password Setup

IPCamera Recorder supports simple security control.


- i. Click  to get into password setup page.




Group	Default	Setting	Shutdown	Control	Search	Network	E-Map
admin	Yes	Yes	Yes	Yes	Yes	Yes	Yes
guest	No	No	No	No	No	No	No


User	Group
admin	admin
1	admin
guest	guest

- ii. On the right side of the password setup page, please fill in the user


name, password and select the group. Click  to add new user

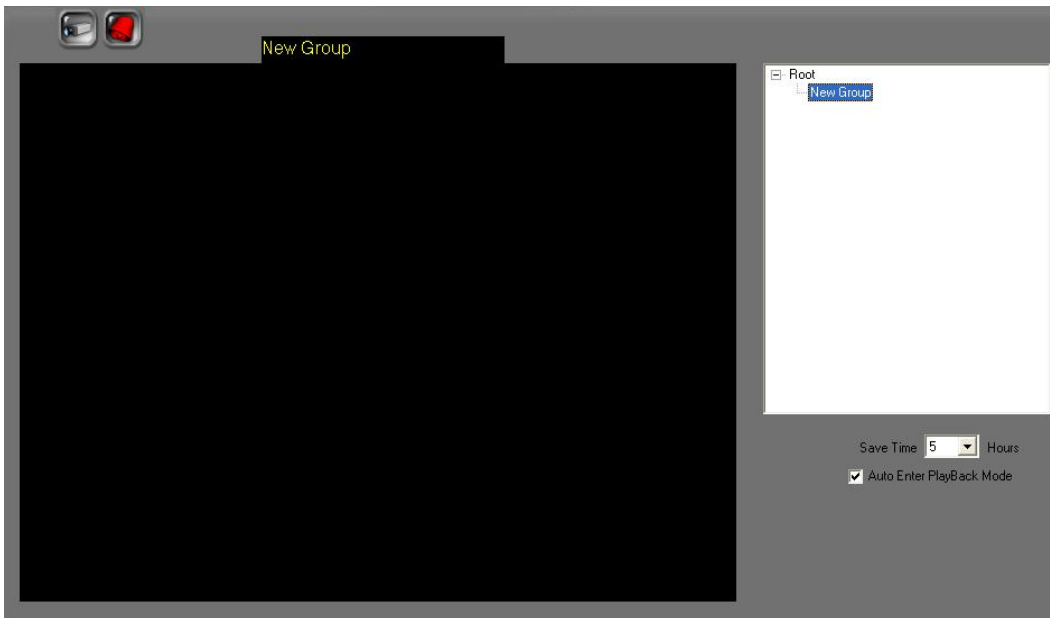
and click  to delete.

- iii. After configuration, please leave the password setup page. In the

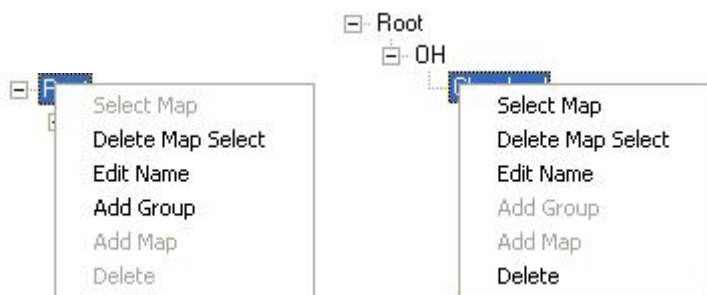
live-viewing page please click  to login/logout.

H. E-map setting

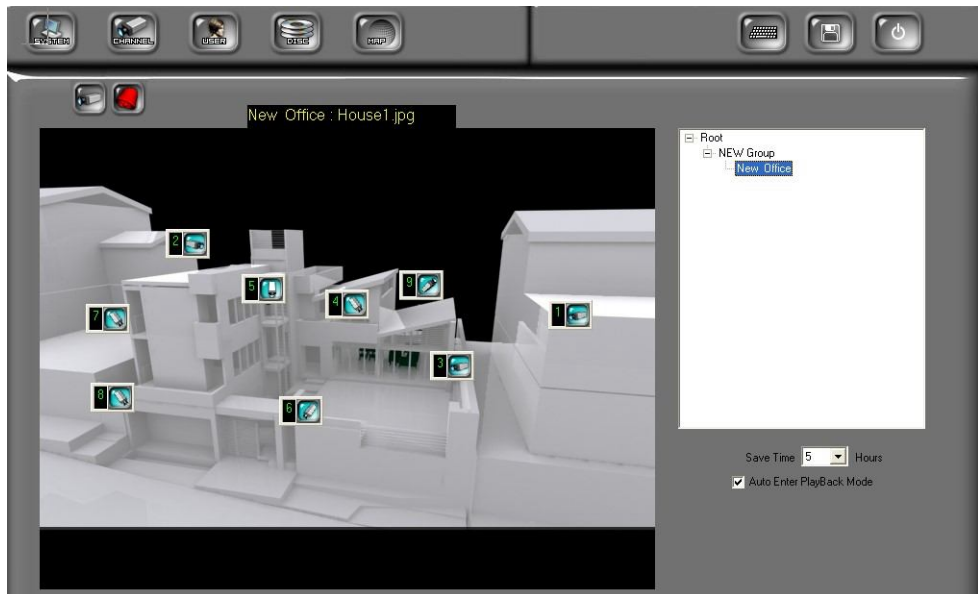
Get into administration page. Click  to set up the E-map.

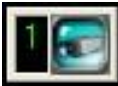


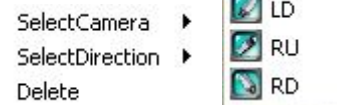
- i. Right-click the mouse to set up and add the map.



- ii. Drag and drop the icon () to put the camera & sensor on the map.



Please right-click  to setup the camera.



iii. Event save time setting : On the right side of the setting page



, please determine recording time of the motion or alarm events. **There are up to 5000 events can be reserved. The previous records will be over-write if exceeding 5000 records.**

iv. Auto Enter Playback Mode : By enabling this function



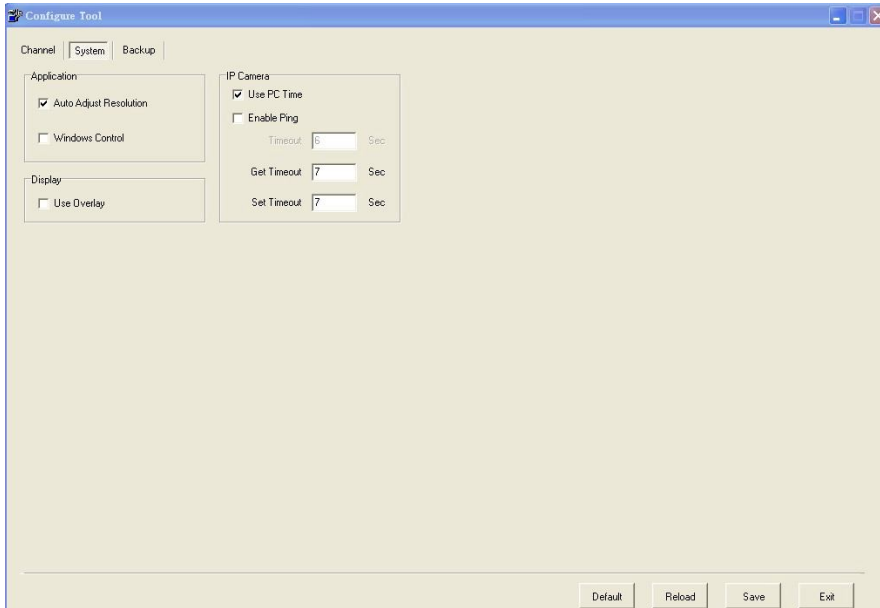
, when the motion and the alarm events are triggered, the system will automatically playback the event (E-MAP mode only).

v. Click  to save the configuration.

XI. Configure Tool

A. Monitor resolution (Default: On)

The program resolution of IPCamera Recorder is 1024 x 768. It will change the monitor resolution to 1024x768 if the monitor resolution is not 1024x768.



- i、 Run Configure tool
- ii、 “System” tab
- iii、 Select “Auto Adjust Resolution” to adjust the resolution automatically.

B. Enable/ Disable “Window Control”

(default: off)

This function is only available for resolution larger than 1024 x 768 monitor. This function can not combine with “Auto Adjust Resolution”. When this function is enabled, if monitor resolution is over 1024 x 768, user is allowed to drag the window to proper position.

C. Enable/ Disable “PC Time”

(default: on)

By enabling this function, system will record the video transferring time based on the PC.

Note: By disabling this function, the recording time of the remote devices may differ from the PC time.

D. Enable/ Disable “Ping”

(default: off)

Some network device will disable the “ping” function. To connect IP camera/ video server which are protected by the firewall, please disable this function to make sure it can connect correctly.

E. Enable/ Disable “Overlay”

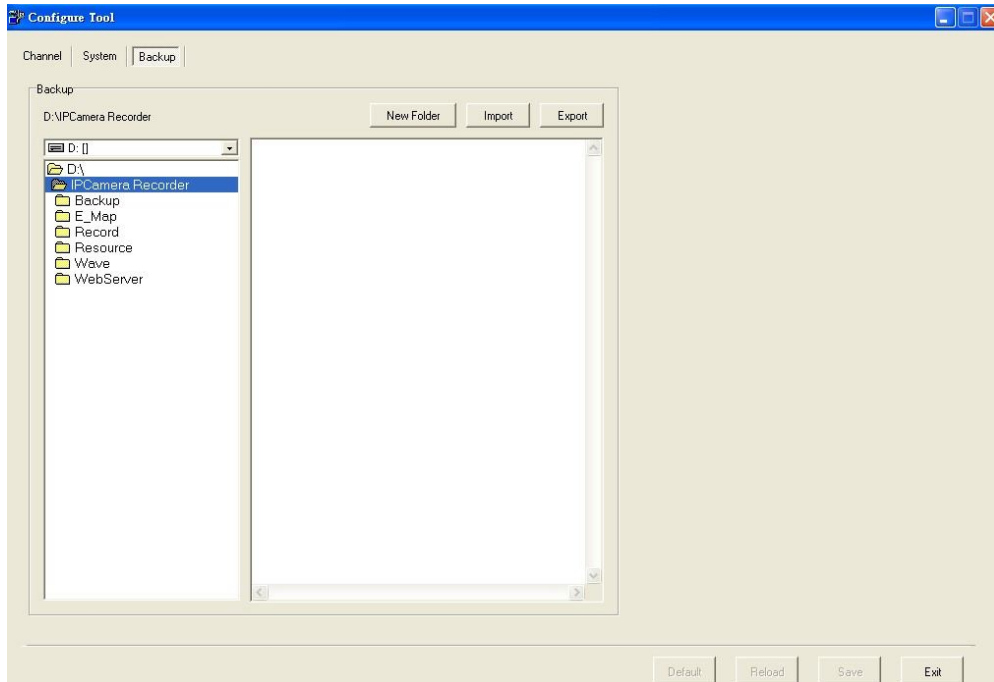
(default: on)

Disable the overlay function if the graphic cards don't support this function.

Note: Enabling overlay function can reduce CPU loading and enhance PC performance.

F. Backup configurations

Use Configure tool to back up all the configurations. It will be very useful to maintain the software using these configurations.



- i、 Select the back up path. Click “Export”.
- ii、 To import the configurations into IPCamera Recorder, select the backup folder, click “Import”.

XII. Product Specifications

Video Monitoring	
Channel	36
Real-Time Monitoring Mode	1, 4, 9, 16, 36
Full Screen	Yes
Supported Hardware Device	<p>Video Server: HWS-01HP, HWS-01HE, HWS-01HD, HVT-01HT, HWS-04HD</p> <p>IP Camera: HLC-36F, HLC-36M, HLC-36P, HLC-42M, HLC-42P, HLC-49M, HLC-49P, HLC-82F, HLC-810, HLC-82F, HLC-830, HLC-1CI, HLC-840, HLC-105, HLC-79G, HLC-49C/G/S, HLC-81NP, HLC-81PT</p> <p>DVR: HDR-04MD, HDR-04MN, HDR-04MP, HDR-04NP, HDR-04FE, HDR-04DE, HDR-08MN, HDR-09MP, HDR-09RE, HDR-16MN, HDR-16MP, HDR-16NE</p> <p>PT: HLC-860, HLC-870</p> <p>AXIS: 205, 206, 207, 210, 211A, 213, 214, 221, 225, 231D, 232D, 241 (4Ch Server), 2100, 2110, 2120, 2130, 2420</p>
E-map	Yes
Multi-Monitor	Yes
Attached Channel Type	Yes
Channel Setup	
Recording Mode	Schedule, Motion, Alarm, Motion & Alarm, Manual
Record Resolutions	SXGA, D1, VGA, CIF, QCIF
Video Quality	best, high, standard, medium, low
Show Title and Time	Yes
Recording Audio	Yes
Monition Detection	Yes
PTZ Control	Yes, via PTZ control panel

DVR Control	Yes, via DVR control panel
IO Control	Yes, can activate preset alarm devices such as siren or alarm, It supports on&off switch mode and delay switch mode, up to 4 I/O Control
Digital Zoom	Yes, via digital zoom control panel
Two-way Audio	Yes
Advanced Setup	Yes. Setup Tag, Time/Date and Status location of shown channel and the font setting
System Setup	
Multi-Screen	Yes, Live-viewing, Multi-Live Window, Playback Window, E-MAP
Log Management	Yes, system log, alarm event, motion event, user log.
Date Format	Yes, 5 Data formats setting
Product Information	Yes
Display Setup	Yes 36CH:1,4,9 and 16CH split window setup(Up to 40 combination)
Keyboard Lock	Yes
Auto Reboot by Schedule	Yes
Auto Startup	Yes
E-mail	Yes, motion and alarm triggered
Auto Logout	Yes
HDD Overwrite	Yes
Alarm Sound	Yes
Video Playback	
Video Search	Yes, time search
Video Export	JPG, AVI
Print Image	Yes
Video Forward/ Backward	1x, 2x, 4x, 8x, 16x, 32x(depending on hardware or channel)
Video Simultaneous Playback	Yes, up to 4 channels
Digital Zoom	Yes, by digital panel control
Event Warning	
On Screen Display	Yes
E-mail Warning	Yes, with event attachment

Alarm Output	when motion detected, pre-selected alarm sound will be playback and live screen will enter full screen mode
Security	
Security Setup	Yes, user account, user password and group management
Remote Control	
Web Server	Remote Connection via Web Browser
Remote Program Server	Remote Connection via RemoteLite Program
Configure Tool	
Hardware Auto Search	Yes
Auto Resolution Adjustment	Yes, Best resolution is 1024 x 768
Window Control	Yes, Resolution must be larger 1024 x 768
Enable Ping Function	Yes
Time Synchronization	Yes, system will record the video transferring time based on the PC.
Use Overlay	Yes
Backup Import/ Export	Yes

XIII. GRAPHIC CARD Test Table

The following list presents the graphic cards which have been tested with IPCamera Recorder series.

OS		
Windows 2000	ATI	RADEON 7500
	NVIDIA	GEFORCE 6200
Windows XP	ATI	RADEON 9200, RADEON 9550, RADEON XPRESS 200, RADEON HD 3650
	NVIDIA	GEFORCE 6200, GEFORCE 6600, GEFORCE 7100, GEFORCE 7300, GEFORCE 8500
Windows Vista	ATI	RADEON XPRESS 200M, RADEON HD 2400 PRO
	NVIDIA	GEFORCE 8500
	Intel	G33

NOTE 1: All the graphic cards which are shown in above table have to update their driver to the latest version. Please go to ATI, NVIDIA or Intel official website to update the driver.

NOTE 2: By using Windows Vista, due to Intel G33 Driver (Version: 7.14.10.1461) from its OEM have not supported Vista DirectX 10 yet, it cannot display the image within Overlay mode while operating Dual-Monitor. Therefore, this caused problem still wait for the solution from its OEM.