

**IP Camera
(with DC12V / PoE)**

Quick Installation Guide

Table of Contents

1	<i>Getting Started</i>	1-1
1.1	PACKAGE CONTENTS	1-1
1.2	PHYSICAL DESCRIPTION	1-2
1.3	CONNECT NECESSARY CABLES	1-5
2	<i>Quick Tour</i>	2-1
2.1	Configure the IP Camera	2-1
2.1.1	Make sure network environment	2-1
2.1.2	Open Internet Explorer with IP address.....	2-2
2.1.3	Login with default administrator's account & password	2-2
2.1.4	Preview the video	2-3
2.1.5	Set the new IP address	2-4
2.1.6	Check Default Video Setting	2-5
2.1.7	Click Save Reboot to restore all settings and please wait about 30 seconds for system reboot.	2-5

1

Getting Started

1.1 PACKAGE CONTENTS

IP Camera
(DC12V / PoE)



Power Adaptor



Software CD



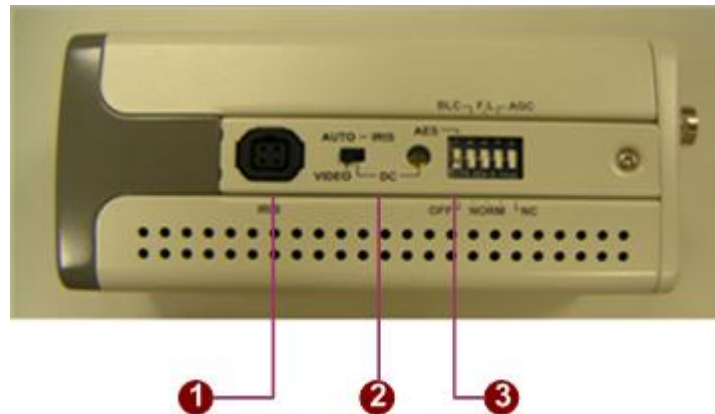
Terminal Blocks for Power & DI/O



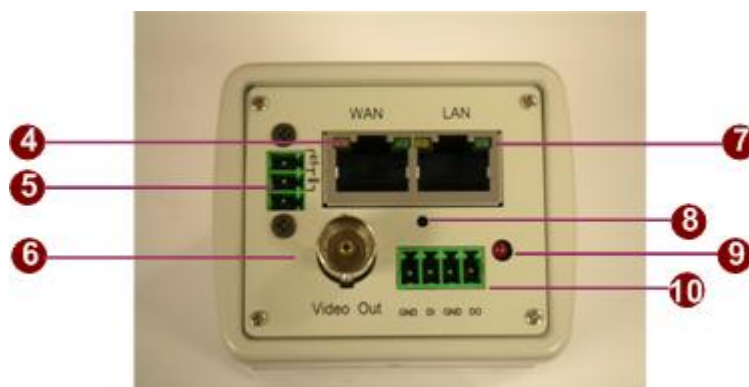
Accessory



1.2 PHYSICAL DESCRIPTION



1. **Auto Iris**
Video / DC (switchable)
2. **Video DC Level Adjustment**
3. **CCD Functions**
 - **Auto Electronic Shutter Speed Mode**
AES On: 1/50 (60) sec. ~ 1/100,000 sec;
AES Off: 1/50 (60) sec.
 - **Back Light Compensation**
ON/OFF (Switchable)
 - **Flickless**
ON/OFF (Switchable)
 - **Automatic Gain Control**
ON/OFF (Switchable)
 - **Auto White Balance**
AWB / Push Lock WB Mode



4. **WAN port**
The IP Camera connects to the WAN (wide area network) via a standard RJ45 connector. Supporting NWAY, this IP camera can

auto detect the speed of local network segment (10Base-T/100Base-TX Ethernet). The WAN port is for FTTH and can connect to a xDSL or cable modem.

With PoE built-in product, you can power the IP camera via WAN port, LAN port or DC input. You can power the IP camera with multiple power inputs at the same time. If you do, the IP camera will get the power from the first power input plugged into it.



NOTE: You may find a support package for help you getting familiar with PoE. Please visit our web site, and get the support document TS-00040.

5. Power Input

DC 12V input.



PIN	NAME	DESCRIPTION
1	12V	Power Input (DC +12V)
2	GND	Ground Pin of Power Input
3	X	No Connection

With PoE built-in product, you can power the IP camera via WAN port, LAN port or DC input. You can power the IP camera with multiple power inputs at the same time. If you do, the IP camera will get the power from the first power input plugged into it.



NOTE: You may find a support package for help you getting familiar with PoE. Please visit our web site, and get the support document TS-00040.

6. Analog Video Output

The IP camera supports one channel analog video output.

7. LAN port

The IP Camera connects to the LAN (local area network) via a standard RJ45 connector. Supporting NWAY, this IP camera can auto detect the speed of local network segment (10Base-T/100Base-TX Ethernet).

With PoE built-in product, you can power the IP camera via WAN port, LAN port or DC input. You can power the IP camera

with multiple power inputs at the same time. If you do, the IP camera will get the power from the first power input plugged into it.



NOTE: You may find a support package for help you getting familiar with PoE. Please visit our web site, and get the support document TS-00040.

8. Reset Button

Step 1: Switch off IP camera by disconnecting the power cable

Step 2: Using a suitable pointed object, press and continue to hold the Reset Button depressed. While continuing to hold the reset button depressed, reconnect the power cable.

Step 3: Keep holding the reset button depressed around 6 seconds, release the reset button. The unit will start up with factory default settings.

9. Action LED Indicator

The LED will light up after IP camera has successfully completed the boot process.

10. DI/O

The IP Camera supports one alarm input and one alarm output.

DI:Logic Level 0: 0~0.4V; Logic Level 1: 3.3~30V

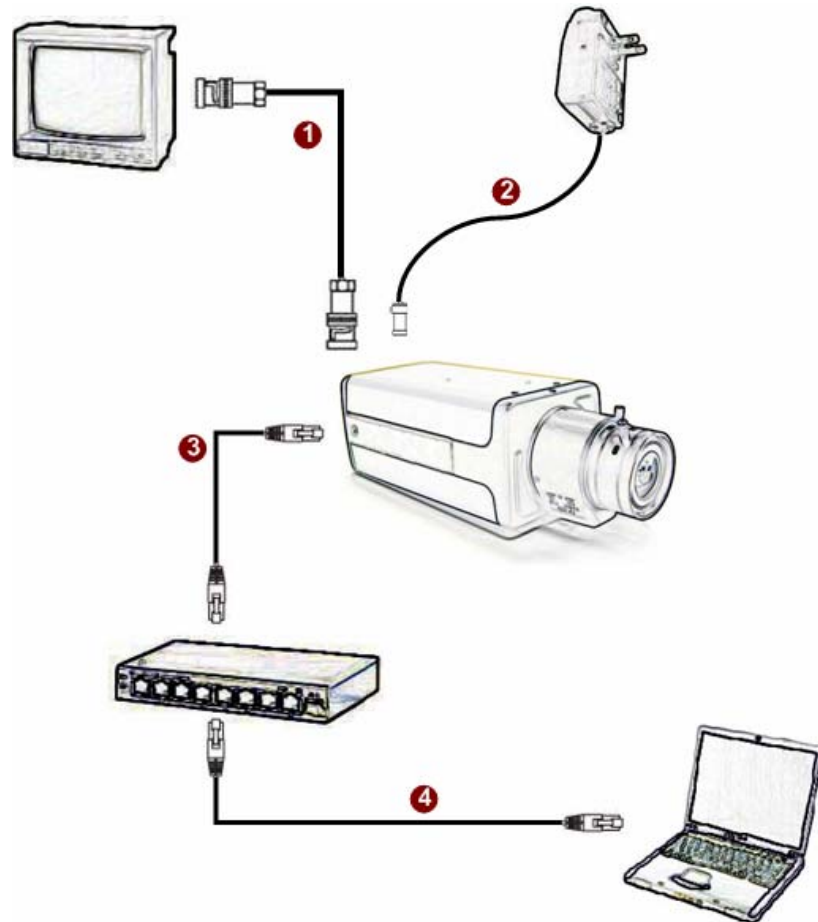
DO:Logic Level 0: 0.1~0.6V; Logic Level1: 2.4~5V



PIN	NAME	DESCRIPTION
1	GND	Ground Pin
2	DI	Digital Input
3	GND	Ground Pin
4	DO	Digital Output

1.3 CONNECT NECESSARY CABLES

The Ethernet cable and power cable are necessary for previewing function. Make sure all cables are correctly and firmly connected.



1. Connect an analog monitor to IP Camera video out (BNC connector).
2. Connect the power adaptor to IP Camera
3. Connect IP Camera's LAN port to an Ethernet (RJ45 connectors). If your IP camera has PoE built-in, you can regard it as a PD and connect it directly to a PSE device like PoE switch.
4. Connect a PC to the Ethernet hub (RJ45 connectors)



NOTE: You may find a support package for help you getting familiar with PoE. Please visit our web site, and get the support document TS-00040.

2

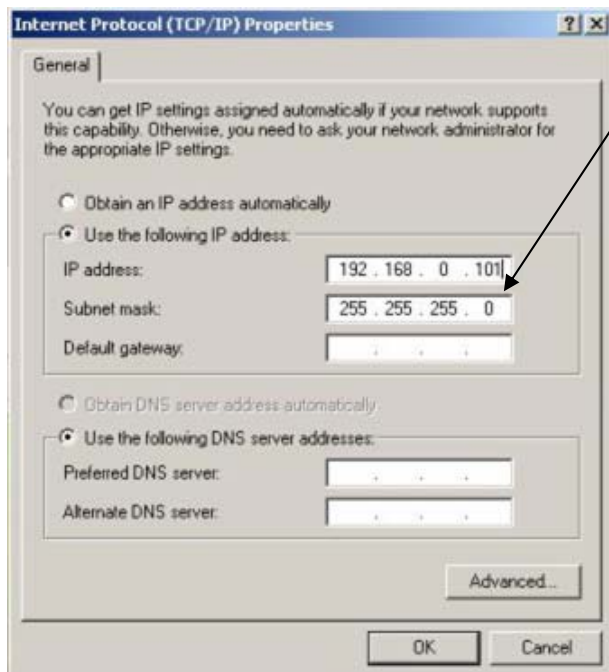
Quick Tour

This section guides you with a quick tour on IP camera.

2.1 Configure the IP Camera

2.1.1 Make sure network environment

Default IP of IP camera is 192.168.0.100. Please make sure IP camera and your PC are on the same network segment before running the installation.



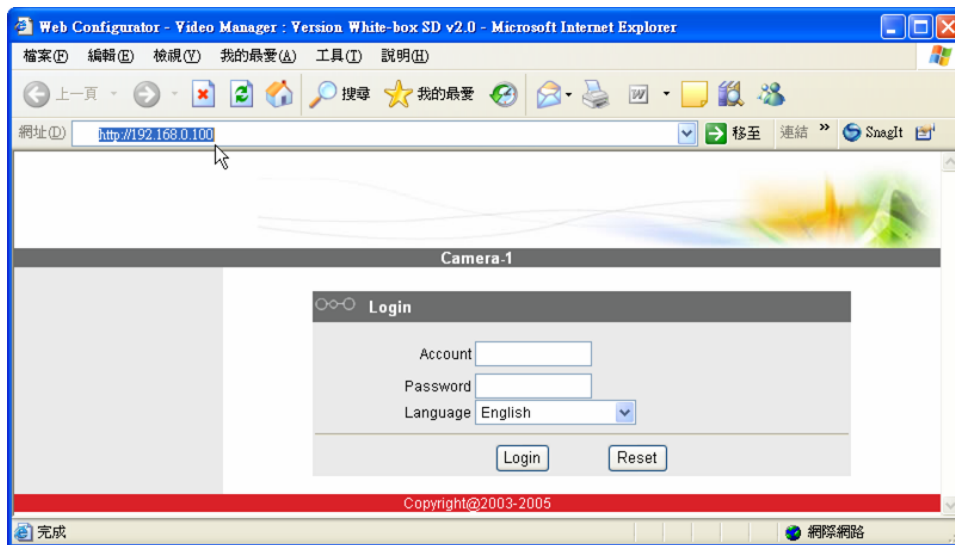
Please set the settings as below.

IP address: 192.168. 0.xxx

Subnet mask: 255.255.255. 0

(NOTE: xxx should be a number from 1 to 254, but 100 is excepted.)

2.1.2 Open Internet Explorer with IP address



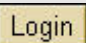
NOTE: If your web browser is earlier than IE6, then download IE6 is recommended.



NOTE: The IP camera default IP address is set to **192.168.0.100**

2.1.3 Login with default administrator's account & password

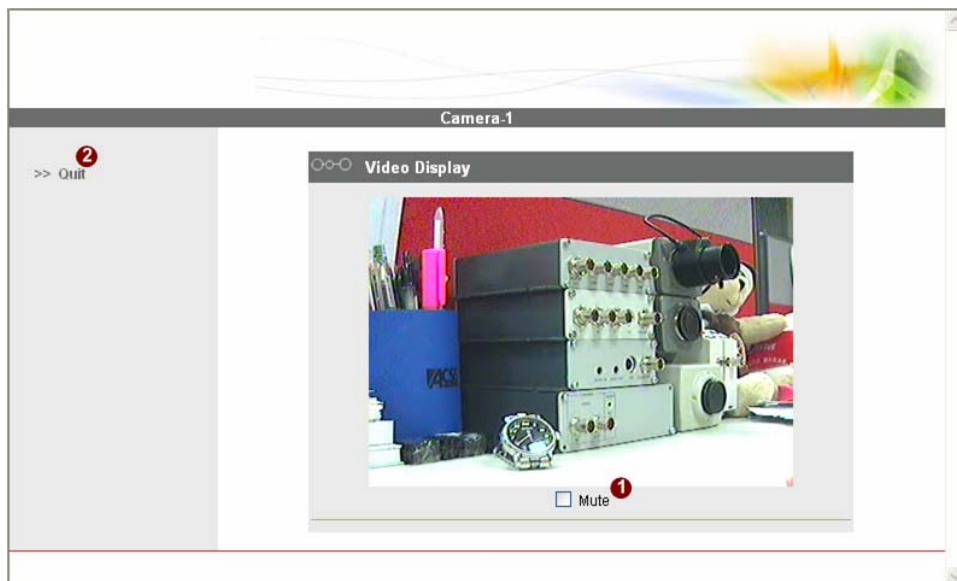


NOTE: Default administrator account is set to **Admin**, password is set to **123456**, and click  button.

2.1.4 Preview the video




NOTE: In your Client PC, please make sure the setting of Network Connections Type is set to Auto Negotiation, since IP camera follows MII standard. Otherwise, you might not see the live image.



2.1.5 Set the new IP address

The screenshot displays the 'Camera-1' web interface with a sidebar on the left containing navigation options: Video Display, Host Setting, WAN Setting, Date Setting, Video Setting, Video Adjust, User Account, System Info, Firmware, Factory Default, Save Reboot, and Logout. The main content area is divided into three sections: 'Host Setting', 'LAN Setting', and 'Network Link Speed & Duplex'. In the 'Host Setting' section, the 'Host Name' field is highlighted with a red '1' and the 'Language' dropdown is highlighted with a red '2'. In the 'LAN Setting' section, the 'IP Address' field (192) is highlighted with a red '5' and the 'IP Address' field (100) is highlighted with a red '6'. In the 'Network Link Speed & Duplex' section, the 'LAN Port' dropdown is highlighted with a red '7' and the 'WAN Port' dropdown is highlighted with a red '8'. Each section has 'Apply' and 'Reset' buttons, with the 'Apply' buttons highlighted with a red '3' and the 'Reset' buttons highlighted with a red '4'.

- **Host Name** : Enter in the domain name.
- **Language** : Language setting for Web Configurator after Save Reboot. Default setting is English.
- **IP Address** : The IP address of the LAN interface. The default IP address is 192.168.0.100.
- **Subnet Mask** : The subnet mask of the LAN interface. The default subnet mask is 255.255.255.0
- **Click**  button

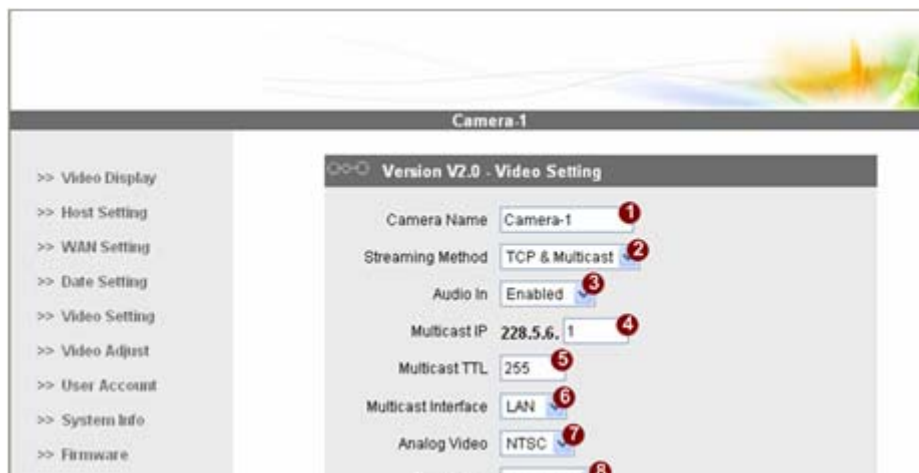


NOTE: Check with your MIS department, if Client PC and IP camera are setting in different VLANs, please connect to WAN port.



NOTE: In your Client PC, please make sure the setting of Network Connections Type is set to Auto Negotiation, since IP camera follows MII standard. Otherwise, you might not see the live image.

2.1.6 Check Default Video Setting



NOTE: Please make sure the TV Input (NTSC / PAL) is meet your requirement, and click **Apply** button.

2.1.7 Click **Save Reboot** to restore all settings and please wait about 30 seconds for system reboot.