

USER MANUAL

Digital Hard Disk Recorder (UDR-204 & UDR-204C, MPEG-2)



* Default system password: 111111

(for RAMS, Record stop, Menu setup, System off, Auto key lock)

* Default ID: admin (for RAMS)

WARNING

To prevent fire or shock hazard, do not expose the unit to rain or moisture.



The symbol is intended to alert the user to the presence of important operating and maintenance (servicing) instructions in the literature accompanying the unit.



The symbol is intended to alert the user to the presence of uninsulated "dangerous voltage" within the product's enclosure that may be of sufficient magnitude to constitute a risk of electric shock to persons.

	CAUTION RISK OF ELECTRIC SHOCK DO NOT OPEN	
<p>CAUTION: TO REDUCE THE RISK OF ELECTRIC SHOCK, DO NOT REMOVE COVER (OR BACK). NO USER-SERVICEABLE PARTS INSIDE, REFER SERVICING TO QUALIFIED SERVICE PERSONNEL.</p>		

<p>CAUTION:</p> <p>To prevent electric shocks and risk of fire hazards, do NOT use other than specified power source.</p>
--

Warning -- This equipment has been tested and found to comply with the limits for a Class A digital device, pursuant to part 15 of the FCC Rules. These limits are designed to provide reasonable protection against harmful interference when the equipment is operated in a commercial environment. This equipment generates, uses, and can radiate radio frequency energy and, if not installed and used in accordance with the instruction manual, may cause harmful interference to radio communications. Operation of this equipment in a residential area is likely to cause harmful interference in which case the user will be required to correct the interference at its own expense.

Warning – If TIMEKEEPER NVRAM IC that is consist of RTC, SRAM, POWER-FAIL CONTROL CIRCUIT and BATTERY is replaced, the replacement is to be done by a trained technician with the same type of component.

Caution -- Any changes or modifications in construction of this device which are not expressly approved by the party responsible for compliance could void the user's authority to operate the equipment.

Warranty will be made void if the product is disassembled or manipulated by the user.

Safety Instructions

- 1) Read these instructions.
- 2) Keep these instructions.
- 3) Heed all warnings.
- 4) Follow all instructions.
- 5) Do not use this apparatus near water.
- 6) Clean only with dry cloth.
- 7) Do not block any ventilation openings.

Install in accordance with the manufacturer's instructions.

- 8) Do not install near any heat sources such as radiators, heat registers, stoves, or other apparatus (including amplifiers) that produce heat.
- 9) Do not defeat the safety purpose of the polarized or grounding-type plug. A polarized plug has two blades with one wider than the other. A grounding type plug has two blades and a third grounding prong. The wide blade or the third prong is provided for your safety. If the provided plug does not fit into your outlet, consult an electrician for replacement of the obsolete outlet.
- 10) Protect the power cord from being walked on or pinched particularly at plugs, convenience receptacles, and the point where they exit from the apparatus.
- 11) Only use attachments/accessories specified by the manufacturer.
- 12) Use only with the cart, stand, tripod, bracket, or table specified by the manufacturer, or sold with the apparatus. When a cart is used, use caution when moving the cart/apparatus combination to avoid injury from tip-over.
- 13) Unplug this apparatus during lightning storms or when unused for long periods of time.
- 14) Refer all servicing to qualified service personnel. Servicing is required when the apparatus has been damaged in any way, such as power-supply cord or plug is damaged, liquid has been spilled or objects have fallen into the apparatus, the apparatus has been exposed to rain or moisture, does not operate normally, or has been dropped.



Table of contents

1.	SYSTEM OVERVIEWS	13
1.1	PACKING LIST	13
1.1.1	Components.....	13
1.1.2	Options	13
1.2	FEATURES & SPECIFICATIONS.....	14
1.2.1	Features	14
1.2.2	Specifications	15
1.3	NAME, FUNCTION & CONNECTIONS	16
1.3.1	Front view	16
1.3.2	Rear panel view.....	18
1.3.3	Remote controller function.....	20
1.4	INSTALLATION.....	21
1.4.1	Installation and connection.....	21
1.4.1.1	Camera.....	21
1.4.1.2	Video Out.....	21
1.4.1.3	Audio	22
1.4.1.4	RS-232.....	22
1.4.1.5	PTZ/AUX/ALARM	22
1.4.1.6	Network	23
1.4.1.7	USB flash memory.....	23
2.	BASIC OPERATION PROCEDURES	24
2.1	POWER ON/OFF.....	24
2.1.1	Power on.....	24
2.1.2	Power OFF	24
2.2	DATE & TIME SETTING	24
2.3	PASSWORD SETTING PROCEDURE.....	24
2.4	NETWORK SETTING	24
2.5	RECORDING.....	24
2.5.1	Recording types.....	25
2.5.2	Recording modes.....	25
2.6	PLAYBACK	25

2.6.1	Press the Play button	25
2.6.2	Audio files	25
2.7	SEARCH.....	25
2.7.1	Search mode	25
2.7.2	Search method	25
2.8	BACKUP	26
2.8.1	Removable HDD (UDR-204).....	26
2.8.2	CD-RW (UDR-204C).....	26
2.8.3	USB flash memory	26
2.8.4	Network.....	26
2.9	CLIENT PROGRAM	27
2.9.1	RAMS (Remote Access & Monitoring System).....	27
2.9.2	UniPlayer.....	27
2.9.3	MultiViewer	27
2.9.4	Quick Installer	27

3. MAIN SETUP SCREEN.....28

3.1	CAMERA SETUP MENU	28
3.1.1	Channel number.....	29
3.1.2	Camera Name Edit	29
3.1.3	Camera hide	29
3.1.4	PTZ setup	30
3.1.4.1	Model Number	30
3.1.4.2	PTZ ID.....	30
3.1.4.3	Reverse Control	30
3.1.4.4	RS-485 Setting.....	31
3.1.4.5	TEST.....	31
3.1.5	Picture Setting	31
3.1.5.1	Contrast, Brightness, Hue, Sharpness	32
3.1.5.2	Default	32
3.1.6	Sequence time	32
3.2	RECORD SETUP MENU	33
3.2.1	Record Type	33
3.2.2	MUX Type.....	33
3.2.2.1	Resolution.....	33

3.2.2.2	Audio Sync	34
3.2.2.3	Channel number	34
3.2.2.4	Quality	34
3.2.2.5	Frame rate	34
3.2.2.6	Record mode	34
3.2.3	QUAD Type	35
3.2.3.1	Resolution	35
3.2.3.2	Quality	35
3.2.3.3	Audio ON/OFF	36
3.2.3.4	Frame rate	36
3.2.3.5	Record mode	36
3.2.4	Record Schedule setting	36
3.3	EVENT SETUP MENU	37
3.3.1	Motion Detection Setting	38
3.3.1.1	Channel	38
3.3.1.2	Sensitivity	38
3.3.1.3	Detection Zone	39
3.3.2	Sensor Setting	40
3.3.2.1	Sensor Type	40
3.3.2.2	Channel Link	40
3.3.3	Alarm Output	41
3.3.3.1	Sensor	41
3.3.3.2	Motion	41
3.3.3.3	Relay Time	41
3.3.4	Post Alarm Record Time	41
3.3.5	FTP Setting	42
3.3.5.1	FTP Server IP address	42
3.3.5.2	ID	43
3.3.5.3	Password	43
3.3.5.4	Target Path	44
3.3.6	FTP Trigger Setting	44
3.3.6.1	Sensor	45
3.3.6.2	Motion	45
3.3.7	E-Mail Address Setting	45
3.3.8	E-Mail Setting	46
3.3.8.1	Send (Period)	46

3.3.8.2	Prohibition setting.....	47
3.3.8.3	SMTP Server IP address	47
3.3.8.4	Authentication.....	47
3.3.9	Event Log	48
3.4	PLAYBACK SETUP	48
3.4.1	Channel	49
3.4.2	Starting Point.....	49
3.4.3	Audio.....	49
3.5	DISPLAY SETUP SCREEN	49
3.6	NETWORK SETUP SCREEN	50
3.6.1	DDNS setting	50
3.6.2	Remote Connection Login Password	52
3.6.3	Network Type.....	52
3.6.4	Static.....	53
3.6.4.1	DDNS On/off.....	53
3.6.4.2	Port.....	53
3.6.4.3	IP Address	53
3.6.4.4	Subnet Mask	53
3.6.4.5	Gateway	53
3.6.5	DHCP	54
3.6.5.1	Port.....	54
3.6.6	PPPoE.....	54
3.6.6.1	Port.....	55
3.6.6.2	ID.....	55
3.6.6.3	Password.....	55
3.6.7	Changing the Network configuration	56
3.7	SYSTEM SETUP SCREEN	56
3.7.1	DVR Name.....	56
3.7.2	System Password.....	57
3.7.2.1	Password Setting	58
3.7.2.2	Password Apply	58
3.7.2.3	Auto Key Lock.....	59
3.7.3	Time / Date	59
3.7.3.1	Set up Time / Date.....	59
3.7.3.2	Time / Date Format	59
3.7.3.3	Day Light Saving Time.....	59

3.7.4	Buzzer	60
3.7.5	Language	60
3.7.6	System Log.....	61
3.7.7	HDD Setup	61
3.7.7.1	The number of HDD	62
3.7.7.2	Write Mode	62
3.7.7.3	Forced erasure.....	62
3.7.7.4	Internal HDD	62
3.7.7.5	Removable HDD.....	62
3.7.8	Aux Port	63
3.7.8.1	Active.....	64
3.7.8.2	Function	64
3.7.9	Factory Default.....	65
3.8	BACKUP	66
3.8.1	Backup Device	67
3.8.2	Start Time	67
3.8.3	End Time	67
3.8.4	Channel	67
3.8.5	Event	67
3.8.6	Backup Start.....	67
3.8.7	Format	67
3.9	SYSTEM INFORMATION.....	68
3.9.1	Video type	68
3.9.2	H/W version	68
3.9.3	S/W version.....	68
3.9.4	KERNEL version	68
3.9.5	Mac Address.....	68
3.10	SEARCH MENU	69
3.10.1	Search by Time.....	69
3.10.1.1	Starting Time.....	69
3.10.1.2	Ending Time.....	70
3.10.1.3	Channel	70
3.10.1.4	Event.....	70
3.10.1.5	Example of Search Result.....	70
3.10.2	Search of still image	70
3.10.2.1	Screen of search	71

3.10.3	Search of back up HDD.....	71
3.11	PLAYBACK.....	72
3.11.1	PLAYBACK of recorded Images.....	72
3.11.1.1	Method of playback	72
3.11.1.2	Screen of played back.....	72
3.11.1.3	Control during play back.....	73
3.11.2	Playback of still image	74
3.11.2.1	Method of playback	74
3.11.2.2	Screen of playing back.....	74
3.11.2.3	Control during Play back	74
3.11.3	Playback the backed up-image.....	75

4. UDR-204 CLIENT PROGRAM77

4.1	OVERVIEW OF UDR-204	77
4.1.1	PC requirement (minimum).....	77
4.2	INSTALLATION & EXECUTION OF PROGRAM.....	77
4.3	RAMS (REMOTE ACCESS & MONITORING SYSTEM)	78
4.3.1	Screen and button	78
4.3.2	Connecting to DVR.....	79
4.3.3	Channel On/Off	80
4.3.4	UniPlayer link	80
4.3.5	Full-screen display	81
4.3.6	Program setup.....	81
4.3.7	DVR recording	82
4.3.8	DVR playback search.....	83
4.3.9	DVR playback search.....	84
4.3.10	DVR backup.....	86
4.3.11	DVR Setting.....	87
4.3.12	Still image Capture	87
4.3.13	Watermark insertion	88
4.3.14	Printing still image	88
4.3.15	Motion picture recording.....	88
4.3.16	D-Zoom.....	89
4.3.17	PAN/TILT, ZOOM/FOCUS	89
4.3.18	HDD Information	90

4.3.19	Check the program version.....	90
4.3.20	S/W upgrade of DVR.....	91
4.3.21	Close program.....	92
4.4	UNIPLAYER.....	92
4.4.1	Screen and button.....	92
4.4.2	Search.....	93
4.4.2.1	Search option from video image & backup file.....	93
4.4.2.2	Search option for still image.....	95
4.4.3	Searching by directory.....	96
4.4.4	Still Image Capture.....	97
4.4.5	Input water mark.....	98
4.4.6	Printing still image.....	98
4.4.7	D-Zoom Function.....	98
4.4.8	Moving picture file playback, playing, pause, temporarily pause, move by interval of frame, fast forward Playing.....	98
4.4.9	Water mark drawing.....	99
4.4.10	Panorama.....	100
4.4.11	Check the program version.....	102
4.4.12	Close Program.....	102
4.5	MULTIVIEWER.....	103
4.5.1	Program login.....	103
4.5.2	Screen and Button.....	104
4.5.3	DVR LIST management & connection.....	105
4.5.4	Camera On/Off.....	106
4.5.5	Full Screen.....	107
4.5.6	Program Setup.....	107
4.5.7	Link with UniPlayer.....	108
4.5.8	PAN/TILT, ZOOM/FOCUS.....	108
4.5.9	HDD Information.....	108
4.5.10	Confirmation of Version of Program.....	109
4.5.11	Closing of Program.....	109
4.6	QUICK INSTALLER.....	110
4.6.1	Select model.....	110
4.6.2	System parameter setting.....	110
4.6.3	Communication over Network or serial port.....	111

5.	APPENDIX.....	112
5.1	INSTALLING HDD	112
5.1.1	Installing single hard disk drive	112
5.1.2	Installing two hard disk drives.	113
5.1.3	Installing CD-RW drive.....	114
5.2	TERMINAL INFORMATION	116
5.2.1	DSUB-9P (RS-232).....	116
5.2.2	DSUB-15P (PTZ / AUX / ALARM / SENSOR)	116
5.3	FACTORY DEFAULT VALUE	117
5.3.1	Main Menu	117
5.3.2	Search Menu.....	120
5.4	PROTOCOL	121
5.4.1	Code table.....	121
5.4.2	Usage.....	122
5.5	HDD RECORDING TIME TABLE	123

All rights reserved. No part of this publication may be reproduced or transmitted in any form or any means, electronic or mechanical, including photocopy, recording, or any information storage and retrieval system, without prior permission.

1. SYSTEM OVERVIEWS

1.1 Packing list

The following items are included with the UDR-204 or UDR-204C. Please be certain that all items are included as soon as you open the box:

1.1.1 Components

- UDR-204 (Removable HDD Rack) or UDR-204C (CD-RW Drive)
- Power cable
- DSUB-15 connector for PTZ /AUX / ALARM
- Quick Manual
- Software CD (RAMS, UniPlayer, MultiViewer, QuickInstaller and Operation Manual)
- Removable external Hard disk drive rack key & screw

1.1.2 Options

- Remote controller (two battery included)
- Hard disk drive (Option or included)

1.2 Features & specifications

1.2.1 Features

- 4-channel Embedded Digital Video Recorder
- MPEG-2 compression
- Quadplex mode for simultaneous recording, playback, backup, and networking
- Live remote viewing, on-the-fly recording, and control over the network
- Dynamic IP support (DHCP & PPPoE)
- Alarm triggered FTP and E-mail alert function
- Motion detection, Video loss, and sensor alarm function
- User defined setting for recording frame rate & resolution
- Various backup method support
(Removable HDD (UDR-204), CD-RW(UDR-204C) USB, Network)
- Selectable Quad/MUX recording
- Audio recording available
- Multiple recording modes: Time lapse, video loss alarm, schedule, manual, & continuous recording
- Still image capture and search function
- Convenient search by alarm, time, or date
- Quick and responsive playback & field-by-field viewing with the Jog/Shuttle dial
- Watermarking (Backup)
- PTZ control through RS-485
- Quick & easy setup through RS-232
- Remote controller available (optional)
- Dual video modes: Selectable NTSC & PAL
- Rack mountable : 2U
- Free voltage power input (100 - 240VAC, 50Hz/60Hz, 50W)

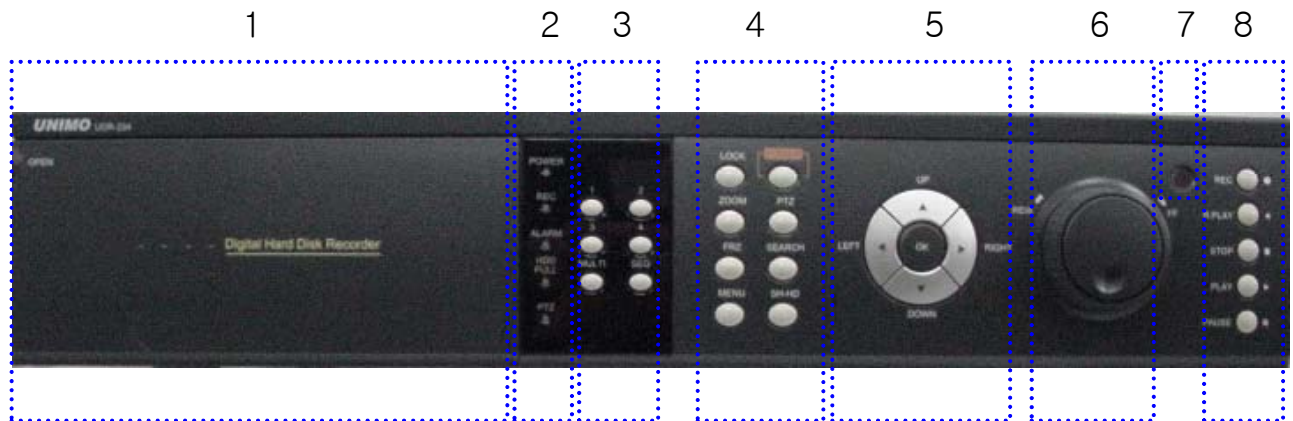
1.2.2 Specifications

Item	Description
Image System	NTSC, PAL selectable
Video Input	4CH Composite, 4CH Loop through, BNC
Video Output	1CH Composite, BNC, 1CH S-Video
Video Compression	MPEG-2
Recording Resolution	Quad NTSC: 720x480 (30fps) PAL : 720x576 (25fps)
	MUX NTSC: 720x480 (30fps), 360x240 (120fps) PAL : 720x576 (25fps), 360x288 (100fps)
Recording Quality	4 Levels (Normal, Enhanced, Fine, Super Fine)
Recording Speed	NTSC: 1/30,1/15,1/10,1/7,1/5,1/3,1/2,1 (8 Steps) PAL: 1/25,1/12,1/10,1/6,1/5,1/3,1/2,1 (8 Steps)
Playback Type	Quad / Mux
Playback Search	Date/Time, Event (Alarm, Motion detection)
Playback Speed	x1/4,x1/2,x1, x2, x4, x8, x16, x32, x64, x128, Field by Field (Forward/Backward)
Sensor Input	4 (NO/NC Selectable)
Alarm Output	1 (NO/NC)
Aux Control In/Out	2/3 (Selectable Function Menu) Alarm Reset In, Record Start In, Record ON/OFF, Alarm Out, Error Out, Record Start Out, Disk Full Out, Record Status Out
Audio	1CH, mono, mute
Network	10Base-T (STATIC,DHCP, PPPoE, E-mail, & FTP)
Motion Detection	11x8, 8 Level Sensitivity
Hard Disk	Removable(UDR-204)+ Internal
Backup Method	Removable HDD (UDR-204), CD-RW(UDR-204C), USB Memory, Network
Watermarking	Backup
PTZ Control	RS-485
System Log	Video Loss, Power On, Power Off, Menu Called, HDD Full, FTP Fail, E-mail Fail, etc
Password Function	Power ON/OFF, MENU, Record OFF, Key Lock
Digital Zoom	x 2
Timer	Built-in Real time clock
Power Source	Free Voltage (100 - 240VAC, 50Hz/60Hz, 50W)
Dimension	433(W) x 385(D) x 88(H)
Operating Temperature	5℃ ~ 40℃
Weight	5.5Kg (w/o HDD)

- Design and specifications are subjected to change without notice.

1.3 Name, function & connections

1.3.1 Front view



Description:

1. Removable HDD Rack (UDR-204) or CD-RW Rack (UDR-204C)

- Removable Hard Disk Drive or CD RW Drive

2. LED indicator

- POWER: Power Off status is indicated by a Red light and ON status is indicated by a Green light.
- REC: Green light (Recording)
- ALARM: Green light (Alarm triggered)
- HDD FULL: Green light (No more disk space for recording)
- PTZ: Pan, Tilt, Zoom, Focus status is indicated by Green

3. Numeric button - Live Viewing mode button

- 1, 2, 3, 4: Channel selection for Live Viewing and Playback mode. Used to input password.
- MULTI: Multi-view. View all four channels in the same window in live viewing or quad playback. Select all sections for Motion Detection Zone
- SEQ: Sequential view. View all active channels sequentially. Release all sections for Motion Detection Zone

4. Function button

- POWER: Press this button to power ON/OFF
- LOCK: Press this button to lock/unlock the buttons of DVR

- ZOOM: Zoom In/Out on the images during Live Viewing.
- FRZ : Freeze.
 - Press button once to freeze the frame at live mode. Press again to return.
 - To take a still image capture at playback mode.
 - Exchange of video input type : Press power button with FRZ button from NTSC to Pal or PAL to NTSC.
- MISC/SH: Miscellaneous functions or Shuttle Hold.
 - MISC: To substitute for the five buttons that are placed on the remote control but on the keypad (NET, OSD, Audio Mute, HDD, LOG).
 - SH: Press button while using the Shuttle to hold the speed. SEARCH: Press once to open the menu to search for recorded files.
- SEARCH: Press once to open the menu to search for recorded files.
- PTZ: Pan/Tilt/Zoom. Press once to access the Pan/Tilt/Zoom/Focus control mode. Press again to exit.
- MENU: Press button to access Main Menu. Press again to return.

5. Direction/select button

- UP: Used to move the cursor up; change possible values in the setup menu; under PTZ control sub menu, used to move camera; or used to adjust focus.
- DOWN: Used to move the cursor up; change possible values in the setup menu; under PTZ control sub menu, used to move camera; or used to adjust focus.
- LEFT: Used to change possible values in the setup menu. Under PTZ control menu, used to move the camera left or used to do Zoom Out; At playback mode, used to decrease playback speed.
- RIGHT: Used to change possible values in the setup menu. Under PTZ control menu, used to move the camera left or used to do Zoom In; At playback mode, used to increase playback speed.
- OK: Used as a selection key. Under PTZ control menu, used to be interchanged P/T mode with Z/F mode

6. Jog/Shuttle

- Shuttle: Multi-speed forward/reverse playback. Under Network Setup sub menu, used to input parameters fast.
- Jog: Frame by frame search.

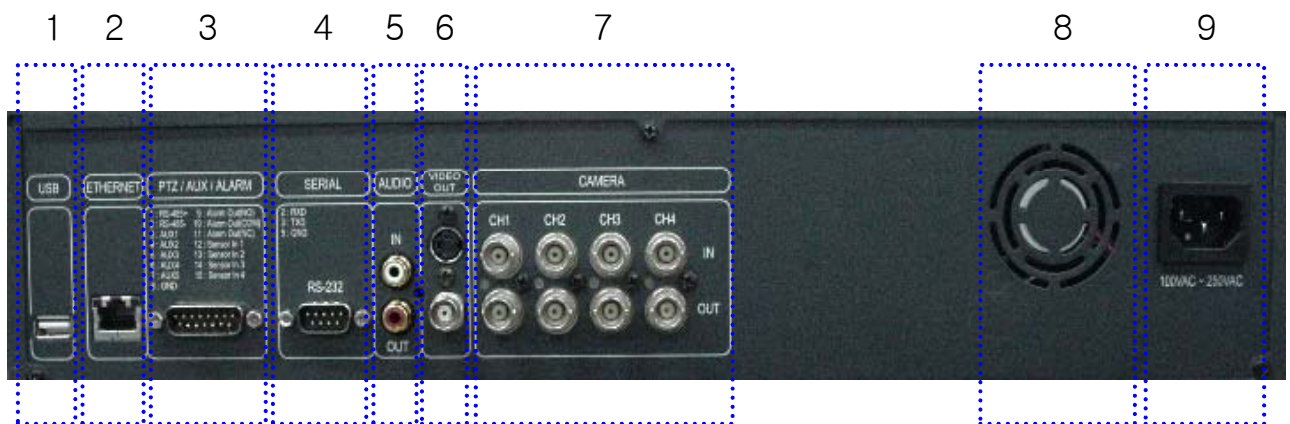
7. IR receiver

- Remote control signal receiver

8. Recording/Playback buttons

- RECORD: Press once to begin recording all active channels. Press again to end recording.
- R-PLAY: Reverse Playback. Press to begin reverse playback. Under PTZ control menu, used to decrease the speed of Pan, Tilt, Zoom, Focus.
- STOP: Stop playback.
- PLAY: Access to playback.
 - Playback button will activate assigned starting position and Channel at playback setup of menu.
 - At pause mode, it will release pause mode.
 - Under PTZ control menu, used to increase the speed of Pan, Tilt, Zoom, Focus.
- PAUSE: Press to freeze the picture at playback mode..

1.3.2 Rear panel view



1. USB

- Connect USB flash drives for backing up stored video files.

2. ETHERNET

- Network terminal for 10Base-T (RJ-45)

3. PTZ/AUX/ALARM

- Terminal for PTZ, sensor, alarm, and AUX IN/OUT (DB-15 Male Connector)

4. SERIAL

- Serial terminal for RS-232C (PC) for console or quick installation (DB-9 Male Connector)

5. AUDIO

- IN: Audio line input
- OUT: Audio line output

6. VIDEO OUT

- Terminals for composite video and s-video to connect with monitor

7. CAMERA

- IN: Video input (to connect with camera output)
- OUT: Video output (Loop-through output for video input)

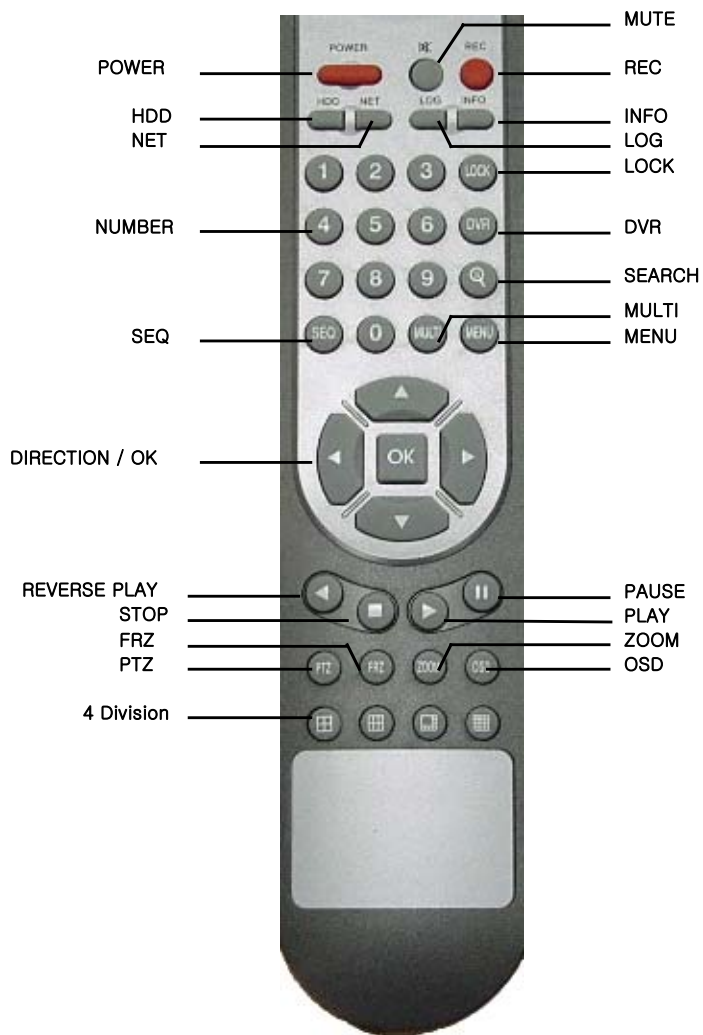
8. FAN

- Heat protection fan to reduce heat in the unit

9. POWER INPUT

- Power cord terminal (free voltage, 100 - 240VAC, 50Hz/60Hz)

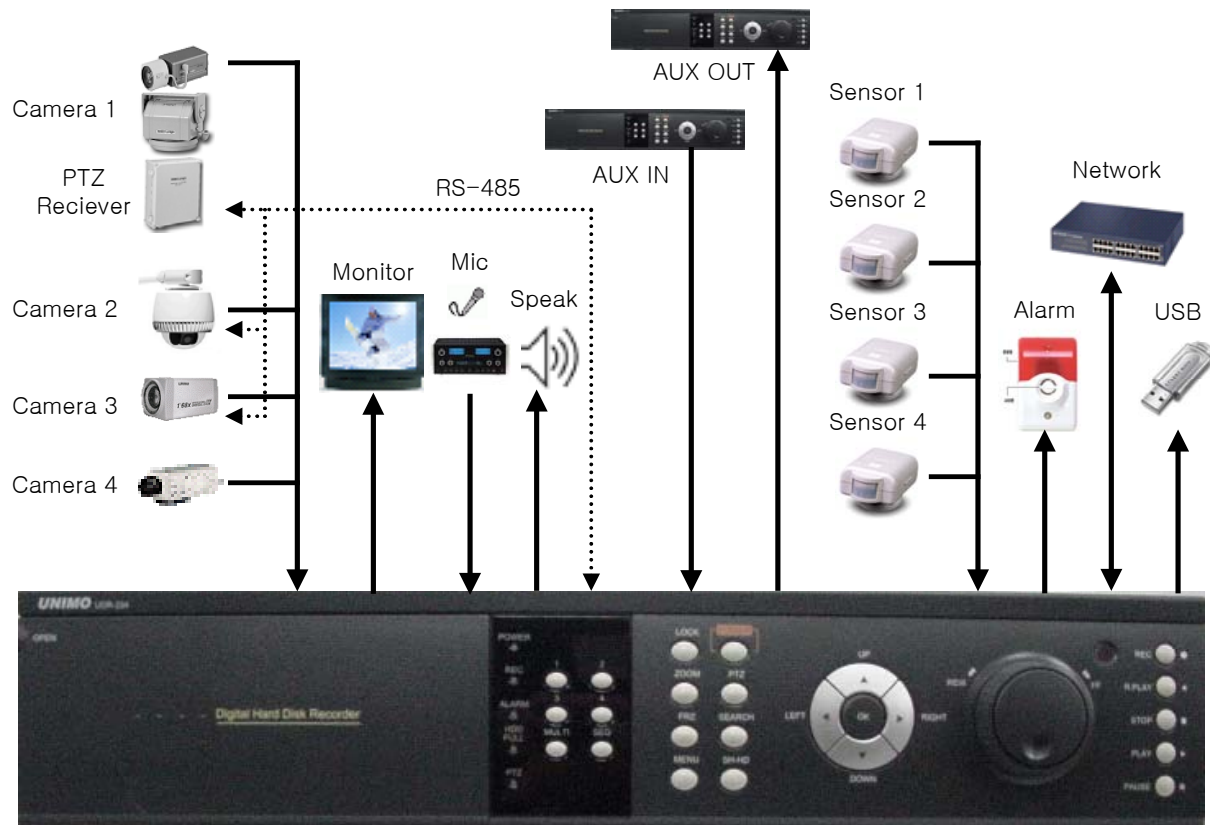
1.3.3 Remote controller function



- **MUTE:** Voice Mute
- **HDD:** HDD status information
- **NET:** Network connection status & user connection information
- **INFO:** Hardware & Software version

1.4 INSTALLATION

1.4.1 Installation and connection



1.4.1.1 Camera



The unit comes with 4 video IN and 4 video OUT for up to four camera connection. Connect to 'IN' terminal for video input and to 'OUT' for loop-through output.

When connecting the BNC cable to 'OUT', be sure that the BNC cable connects to a display monitor or other types of video equipment for termination.



1.4.1.2 Video Out

The unit has one composite video output and one S-video output.

Use either output for display monitors.

1.4.1.3 Audio



Use IN for a Line input and OUT for speaker output.

1.4.1.4 RS-232



Use this connector to connect RS-232 cable to the serial port on your PC to control the DVR or to perform Quick Installation.

1.4.1.5 PTZ/AUX/ALARM



1.4.1.5.1 RS-485+, RS-485-

UDR-204 uses RS-485 protocol to control PTZ Receiver, Speed Dome, and Auto-focus camera. Be sure to match the polarity.

1.4.1.5.2 AUX 1~5

AUX Port consists of 2 input ports (AUX 1,2) and 3 output ports (AUX 3,4,5) and the function of each port is selectable according to user's purpose, user's access to external DVR, or controllers using the supplied DB-15 connector.

1.4.1.5.3 Alarm Out (NO, COM, NC)

The Alarm output is activated using a relay contact point when an alarm event occurs for the duration of the alarm event.

Select from Normal Open Relay or Normal Close Relay.

N.O. (Normal Open) is disconnected from COM during normal status and connected to COM during alarm event. N.C (Normal Close) is connected from COM during normal status and disconnected to COM during alarm event.

1.4.1.5.4 Sensor 1~4

Users can connect up to four N.O./N.C. type sensors and configure them within Main Menu, Sensor Setting.

1.4.1.6 Network



Connect RJ-45 Ethernet cable.

1.4.1.7 USB flash memory



Perform backup of recorded video files from DVR system to USB flash memory manually.

2. Basic operation procedures

2.1 Power On/Off

2.1.1 Power on

Using either the keypad or the remote control, press the “Power” button. (Note: In case of power outage or rare instance of system failure, the DVR will reboot automatically)

The Power LED light will turn from red to green when it has turned on properly.

In a standby mode, the LED is red.



2.1.2 Power OFF

In order to shutdown the system, you must type in the password. The default password for shutdown is “111111”.

2.2 Date & time setting

Set the date and time for the DVR.

(**System Setup in Main Menu → Time/Date**)

2.3 Password setting procedure

Select or change your password for the DVR. The password must be a 6-digit number consisting of numbers 0 ~ 9.

(**System Setup in Main Menu → System Password**)

2.4 Network setting

There are three types of network setting for the DVR: Static, DHCP, or PPPoE. Please set the network type. (**Network Setup in Main Menu**)

2.5 Recording

Select recording related parameters in the Record Setup in the main menu.

2.5.1 Recording types

There are two types of recording: MUX or QUAD type. For resolution, select either D1 (720*480 (NTSC), 720*576 (PAL)) or CIF (360*240 (NTSC), 360*288 (PAL)). Audio channel is synchronized with the selected video signal. Select Video input quality, Frame rate, and recording mode.

2.5.2 Recording modes

Recording mode are made up of MANUAL, CONTINUOUS, MOTION, SENSOR, MOTION+SENSOR, and SCHEDULE mode. A red record light (●) on the top right corner of each channel will indicate DVR recording.

In the MANUAL mode, the DVR starts to record on/off whenever the RECORD button is pressed.

2.6 Playback

2.6.1 Press the Play button

The DVR will playback either the first recorded file or the last recorded file according to the setting in the Playback Setup menu.

2.6.2 Audio files

You will hear audio when video files containing audio is selected for playback.

2.7 Search

2.7.1 Search mode

The UDR-204 has 3 types of search modes:

- SEARCH BY TIME: Displays recorded data by recording time and camera number.
- STILL IMAGE SEARCH: Displays recorded still images.
- BACKUP HDD SEARCH: Displays data list from the backup Hard Disk drive.

2.7.2 Search method

- When you press Search, select from three options listed: Search by Time, Still Image Search, & Backup HDD Search. A detailed search list will open. Press OK button to view the selected file.
- Use the Left/Right key to move page by page. The Up/Down key is used to move between items on the same page.

2.8 Backup

The UDR-204 (UDR-204C) has various types of backup methods:

2.8.1 Removable HDD (UDR-204)

- If there are two hard disk drives equipped in the UDR-204, the removable HDD will be used as a backup drive. MANUAL BACKUP, AUTO BACKUP will be selectable for backup.
- MANUAL BACKUP: Execute backup during user's preferable setting.
- AUTO BACKUP: Execute backup accordingly whenever new recording file was made.

2.8.2 CD-RW (UDR-204C)

- After inserting CD-Rom into CR-RW Drive, push Menu button & go to Backup menu, and back up the moving picture of HDD by CD-RW for the selected time.
- In the backup menu, select backup time → start backup, and backup for capacity of CD RW.
- The backed-up files can be play-backed by general Media player or by Uniplayer

2.8.3 USB flash memory

- User can backup manually from internal HDD to USB memory stick by connecting one to USB port equipped at rear side of DVR
- Connect USB Memory Stick into USB port → Input the start of backup date and time at backup menu → Input the end of backup date and time at backup menu → Select the channel → Select event condition.
- USB flash memory will save backup to be used..
- Backup by USB flash memory supports video data only.
- User can replay backup files at proprietary UniPlayer client program.

2.8.4 Network

At remote sites, users will access to backup audio & video files recorded in local H.D.D to user's PC through network.

2.9 Client Program

2.9.1 RAMS (Remote Access & Monitoring System)

- Remotely access, monitor, and operate the DVR for real-time live viewing, playback, backup, on-the-fly recording, and control over the LAN/WAN
- Upgrade the S/W(Kernel, Ramdisk) of DVR
- Install the RAMS program as referred to in section 4.2 of Operation Manual.
- Execute RAMS program and register selected DVR's IP address & Port number from the DVR list.
- After selecting the target DVR, enter "admin" for ID and "11111" for default password. This will enable you to access the DVR.

2.9.2 UniPlayer

- A viewer with functions for recording, capturing, & backing up files.

2.9.3 MultiViewer

- To monitor multiple DVR, both locally and remotely. (Up to 16 Channels: for example, 4x4CH DVR, or 16x1CH DVR)

2.9.4 Quick Installer

- To setup configuration template for quick & easy, multiple unit setup using RS-232 or network
- To upload/download DVR menu setting from/to DVR as file form using pc.

3. Main Setup screen

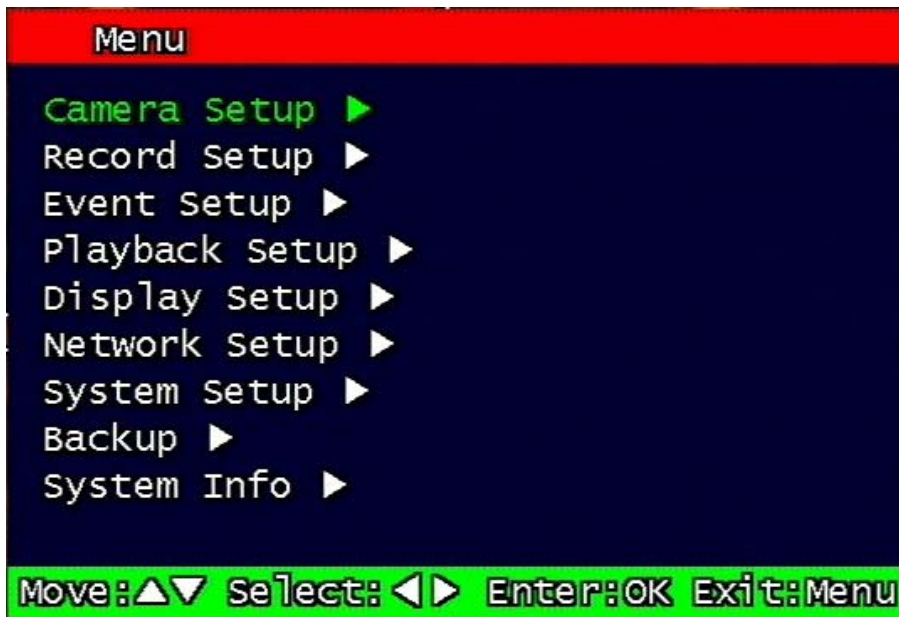


Figure 3-1 Main Setup screen

3.1 Camera Setup menu

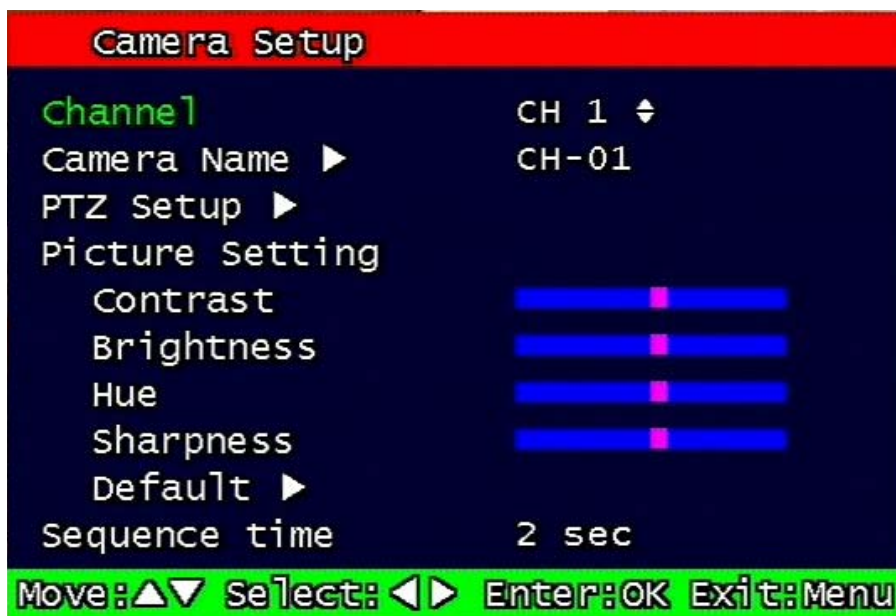


Figure 3-2 Camera setup screen

3.1.1 Channel number.

A user can select targeted camera from CH #1 ~ CH # 4. After setting, this, live viewing picture will be changed to selected channel automatically.

3.1.2 Camera Name Edit

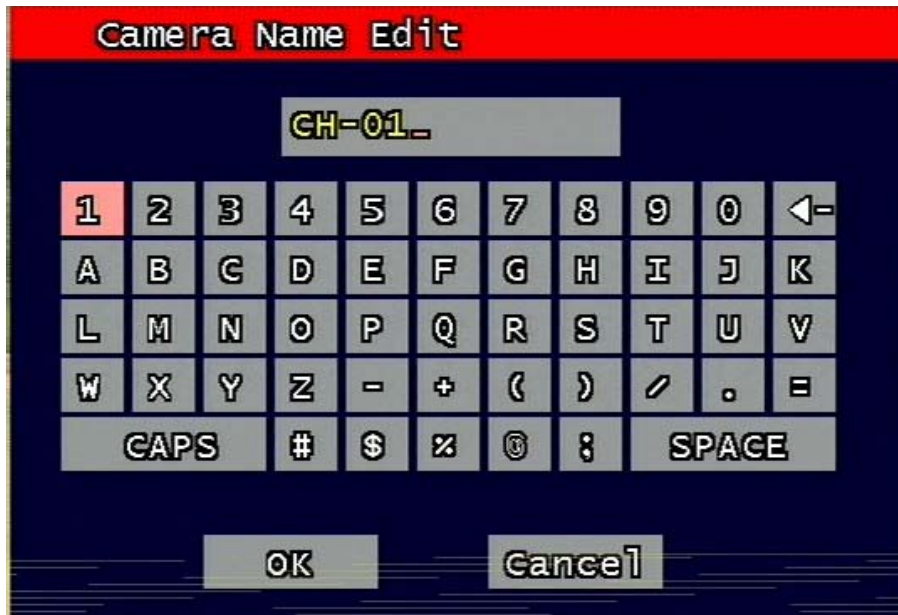


Figure 3-3 Camera name edit screen

User can edit camera name indicated button part of each channel. as explained paragraph 2.1.1. According to above picture 1-2, after keyboard type's window which is enterable or editable as displayed, user can set channel name with entering new letters and it is available 12 letters at maximum. Selected name at this paragraph will be displayed at the left side of top portion on window.

By using "CAPS" button, user can shift a letter to capital one and/or inversion.

By using "←" button, user can delete miss-entered characters .

If you enter "OK" button, entered name will be applied after that and revert to previous menu.

If user enter "cancel" button, entered name will be discharged and maintain the present name & reverted to prior menu.

3.1.3 Camera hide

User can make the live screen appear or not by channel with this function.

If user sets up "On" in this function, the live screen of the selected channel does not appear.

In case of recording, the recording continues, although screen does not appear.

3.1.4 PTZ setup

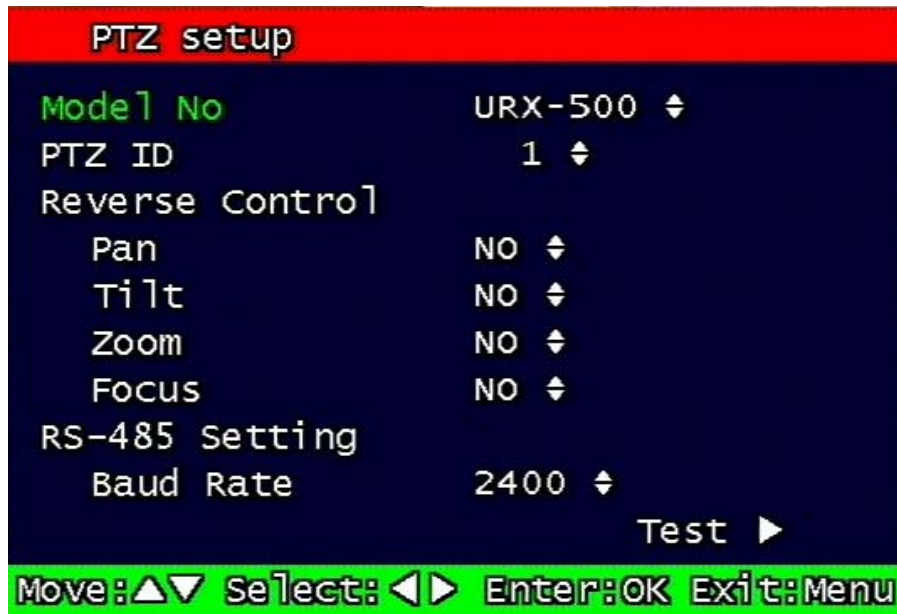


Figure 3-4 PTZ setup screen

It sets PTZ protocol of targeted channel in the Camera Setup. (Please refer to paragraph 3.1.1 for channel selection)

3.1.4.1 Model Number

Select the PTZ model or choose "NONE".

3.1.4.2 PTZ ID

Set the PTZ ID: 0 ~ 255

The PTZ ID must match the ID number that has been set by the PTZ Controller. Please verify the ID on the Controller first before setting the PTZ ID.

3.1.4.3 Reverse Control

Without any further changing of cable connection, user can control PTZ controller by changing reverse direction of PTZ. Each PAN, TILT, ZOOM, FOCUS will be selectable to reverse direction and each parameter will be selectable ON /OFF.

3.1.4.4 RS-485 Setting

Choose from the following to set PTZ RS-485 baud rate: 2400, 4800, 9600, 19200, 38400, 57600, 115200 bps.

3.1.4.5 TEST

Users can test the PTZ control after setting the parameters. After clicking the TEST button, PTZ control will be available and tested by up/down key. Pan/tilt and Zoom/Focus mode will be controlled after entering OK key button.

PTZ control speed will be controlled by PLAY button for higher speed or by R-PLAY button for precision control

Users can access prior menu with PTZ key entering after finishing test.

3.1.4.6 Additional PTZ Menus

Users can access additional PTZ menu after pressing Menu button in the PTZ mode.

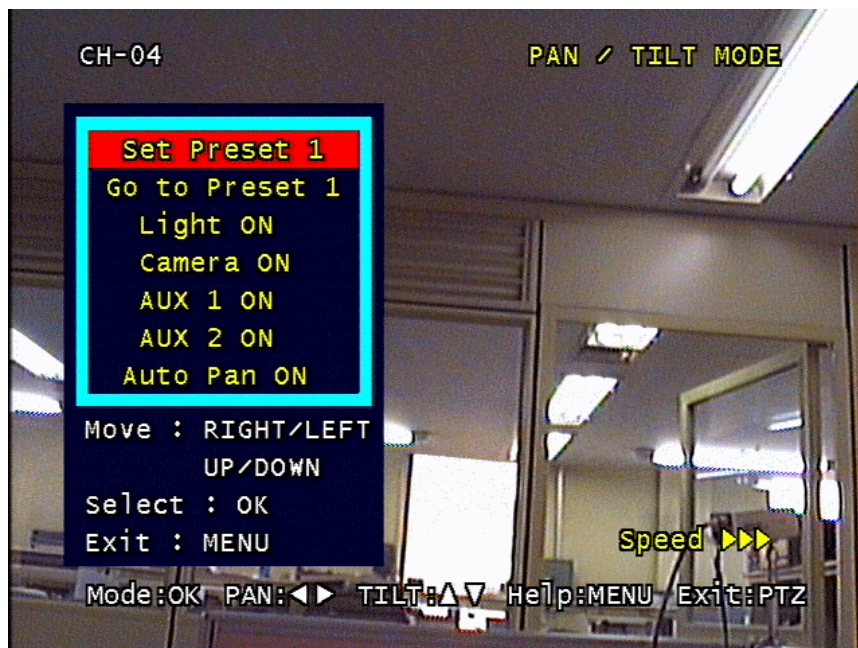


Figure 3-5 Additional PTZ Menu

- Set Preset: To preset the position of the Pan/Tilt drive. Users can preset 4 positions selected by Left/Right buttons and save the preset by pressing OK button.

- Go to Preset: To move the Pan/Tilt drive to the position preset in Set Preset mode.
Preset numbers are selected by Left/Right buttons and the Pan/Tilt drive moves to the preset position after pressing OK button.
- Light : To turn on/off the camera lighting selected by Left/Right and OK buttons.
- Camera : To turn on/off the camera itself selected by Left/Right and OK buttons.
- Aux : To turn on/off the AUX (two) connected to the camera. On/off are selected by Left/Right and OK buttons.
- Auto Pan : To automatically pan the camera. On/off are selected by Left/Right and OK buttons.

3.1.5 Picture Setting

3.1.5.1 Contrast, Brightness, Hue, Sharpness

Contrast, Brightness, Hue, Sharpness will be managed & each parameter has 16 level steps adjustable.

3.1.5.2 Default

Users can restore the factory default setting of Contrast, Brightness, Hue, & Sharpness.

Confirmation box on picture setting default will appear after entering default. User can restore the factory default setting after entering 'yes' key button.

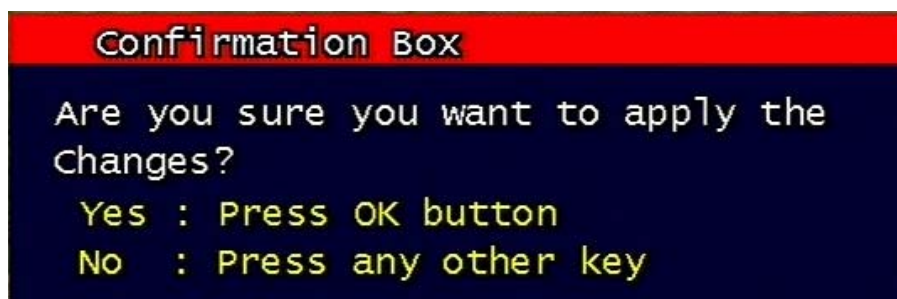


Figure 3-6 Confirmation box on Picture Setting Default

3.1.6 Sequence time

It can set sequential display time of each channel during Live Viewing mode.

Choose from 2, 4, 5, 8, 10, 15, 30 second sequential display time.

3.2 Record Setup menu

3.2.1 Record Type

Users can select either Quad mode or MUX mode for recording type.

MUX Recording records full size recording sequentially from each channel.

Quad recording records 4 channel video signal as one same picture and each channel has quad sliced size.

Under MUX Recording mode, resolution will be applicable to all channel. Picture quality, recording time, and recording mode can be selected channel by channel.

Under QUAD Recording mode, Resolution, picture quality, and recording rate will be applied to all channel equally.

3.2.2 MUX Type

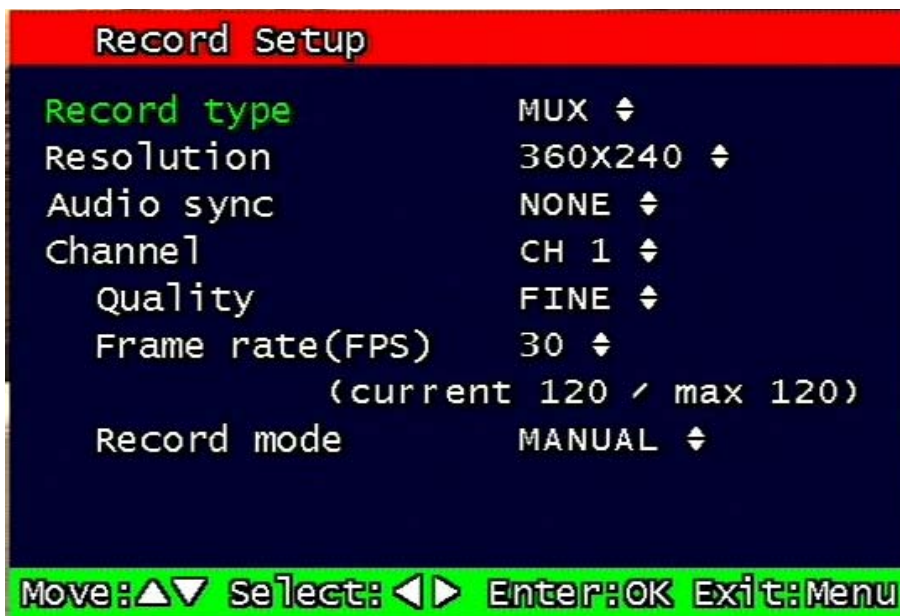


Figure 3-7 MUX Record setup screen

3.2.2.1 Resolution

Under MUX Recording mode, Resolution for NTSC is “360 x 240” or “720 x 480”. PAL is “360 x 288” or “720 x 576” selectable and selected resolution will be applicable to four channels simultaneously.

3.2.2.2 Audio Sync

As audio input port is one channel available, user should synchronize audio signal with targeted video signal. With synchronized channel will record audio as well as video. But others will only record video input signal only.

3.2.2.3 Channel number

Under MUX recording mode, quality, frame rate will be selected per channel. So users can choose targeted channel.

3.2.2.4 Quality

Under MUX recording mode, recording quality of each channel will be selectable & Normal, Enhanced, Fine, Super Fine 4 steps are available now.

3.2.2.5 Frame rate

3.2.2.5.1 NTSC

Under MUX recording mode, User select channel's recording frame rate and none (no recording), 1, 2, 3, 5, 7, 10, 15, 30 fps will be available.

But, with 720 x 480 resolution, user should not set to exceed 30 frame per second with accumulated total channel recording.

3.2.2.5.2 PAL

Under MUX recording mode, User select channel's recording frame rate and none (no recording), 1, 2, 3, 5, 6, 10, 12, 25 fps will be available.

But, with 720 x 576) resolution, user should not set to exceed 25 frame per second with accumulated total channel recording.

3.2.2.6 Record mode

Under MUX recording mode, user will choose recording mode channel by channel and selectable parameters and meaning are below.

- Manual: Manual recording function that starts record and/or stop recording manually by pushing REC key on remote controller or on front key.
- Continuous: Continuous recording mode that starts to recording automatically after turning on the systems.
- Motion: Start to record under motion detection. Under Motion, it starts pre-

alarm recording around 2 or 3 second and maintains it until no of motion event. Post-alarm recording will be controlled at Post alarm recording time on Event Setup Menu. (Refer to paragraph 3.3.4)

- **Sensor:** Start to record under sensor input. As same as motion mode, it starts pre alarm recording around 2 or 3 second and maintain it until no of sensor input. Post-alarm recording will be controlled at Post alarm recording time on Event Setup Menu. (Refer to paragraph 3.3.2)
- **Motion + Sensor:** Start to recording under motion detection or Sensor occurrence. The detailed will be referred to previous motion detection & sensor occurrence.
- **Schedule:** This mode supply user defined time and date schedule recording in advance detailed recording schedule will be referred to paragraph 3.2.4 record schedule.

3.2.3 QUAD Type

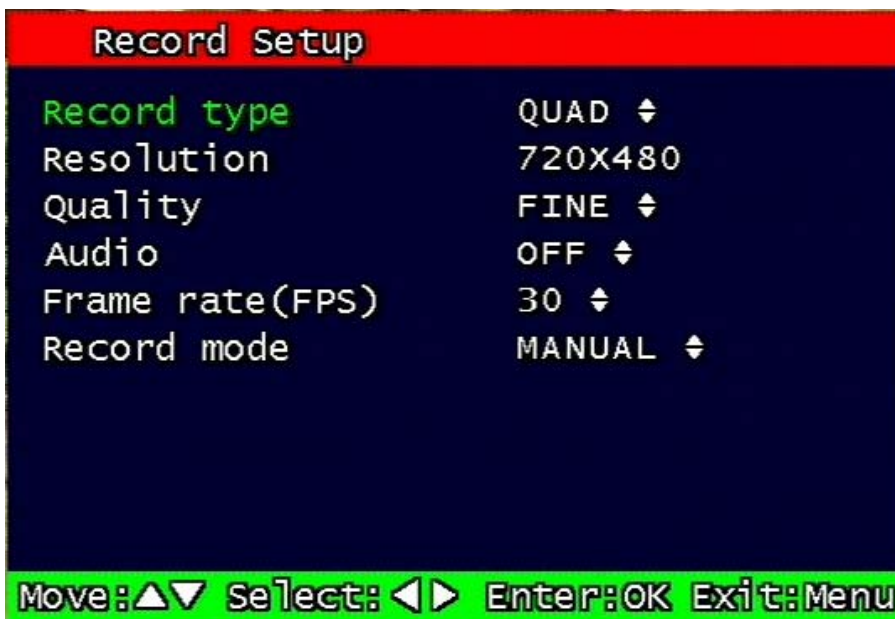


Figure 3-8 Quad record setup screen

3.2.3.1 Resolution

Only 720 x 480 for NTSC (or 720 x 576 for PAL) is used at Quad recording.

3.2.3.2 Quality

Normal, Enhanced Fine, Fine, Super Fine 4 quality level will be selectable for quality mode at Quad Recording and those are applicable to each channel.

3.2.3.3 Audio ON/OFF

User can set audio on/off function. If used Audio On mode, audio signal will be recorded simultaneously with video and used audio off mode, audio signal not be recorded.

3.2.3.4 Frame rate

3.2.3.4.1 NTSC

User can set the recording Frame rate at Quad Recording, none (Non recording), 1, 2, 3, 5, 7, 10, 15, 30 fps will be selectable. This setting is applicable to all channels as equal forms.

3.2.3.4.2 PAL

User can set the recording Frame rate at Quad Recording, none (Non recording), 1, 2, 3, 5, 6, 10, 12, 25 fps will be selectable. This setting is applicable to all channels as equal forms.

3.2.3.5 Record mode

Please refer to terms on Record mode 3.2.2.6 as it is same..

3.2.4 Record Schedule setting

	SUN	MON	TUE	WED	THU	FRI	SAT
00 ~ 01							
01 ~ 02							
02 ~ 03							
03 ~ 04							
04 ~ 05							
05 ~ 06							
06 ~ 07							
07 ~ 08							
08 ~ 09							
09 ~ 10							
10 ~ 11							
11 ~ 12							
12 ~ 13							
13 ~ 14							
14 ~ 15							
15 ~ 16							
16 ~ 17							
17 ~ 18							
18 ~ 19							
19 ~ 20							
20 ~ 21							
21 ~ 22							
22 ~ 23							
23 ~ 24							

QUAD

- Manual
- Continuous
- Motion
- Sensor
- Motion + Sensor

OK : Select
Record Condition
Menu : Save & Exit

Figure 3-9 Recording schedule setting screen

User can select to set recording schedule targeted date, time based week & 24Hours.

Move the cursor to the desired position of time by pressing up/down key and set the recording mode at the desired position of time by pressing the OK button with referring to the Help Message per Record Mode on the right position. After the setup, store the set schedule and exit to the top menu by pressing the Menu button.

3.3 Event Setup Menu

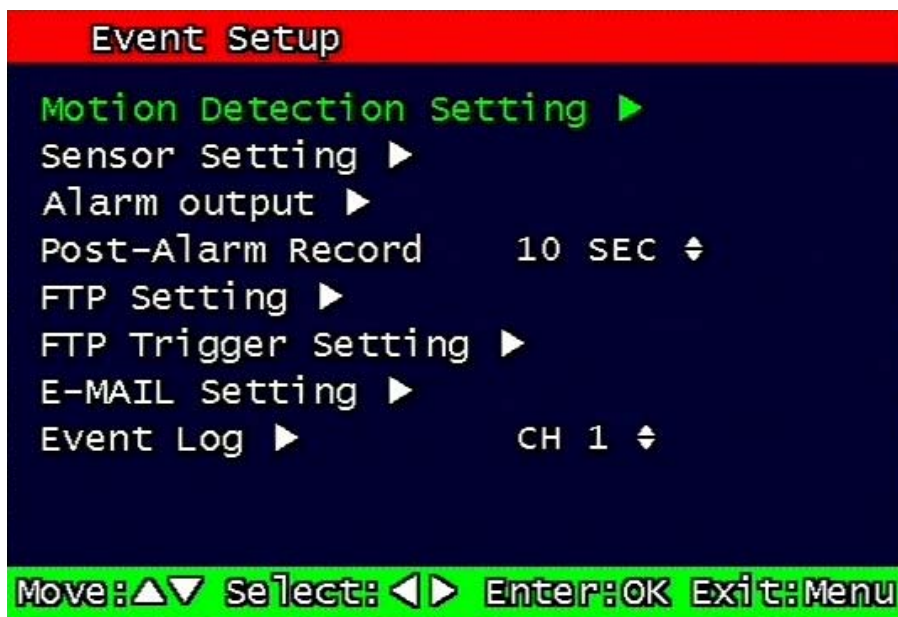


Figure 3-10 Event Setup screen

3.3.1 Motion Detection Setting

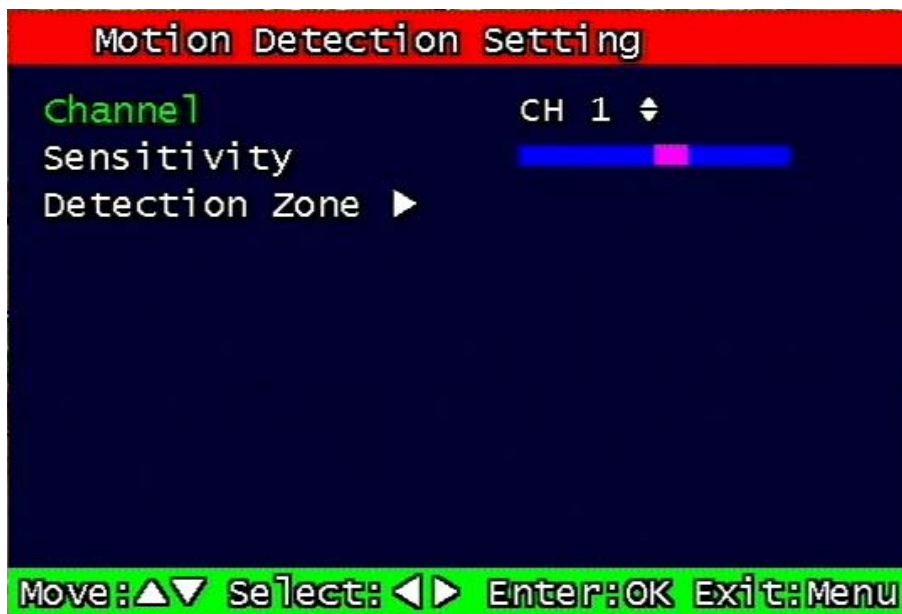


Figure 3-11 Motion Detecting Setup screen

Sets up the motion detecting area and sensitivity. It sets up all 4 channels when it is set on the Quad recording.

3.3.1.1 Channel

Sets up the motion detecting area and sensitivity for each channel. It sets up all 4 channels when it is set on the Quad recording.

Under Quad recording mode, multi-channel is setup as same as one channel when user setup motion detection areas & sensitivities.

3.3.1.2 Sensitivity

Sets up the motion detecting sensitivity. The lower the sensitivity gets the closer to the left the red bar gets.

3.3.1.3 Detection Zone

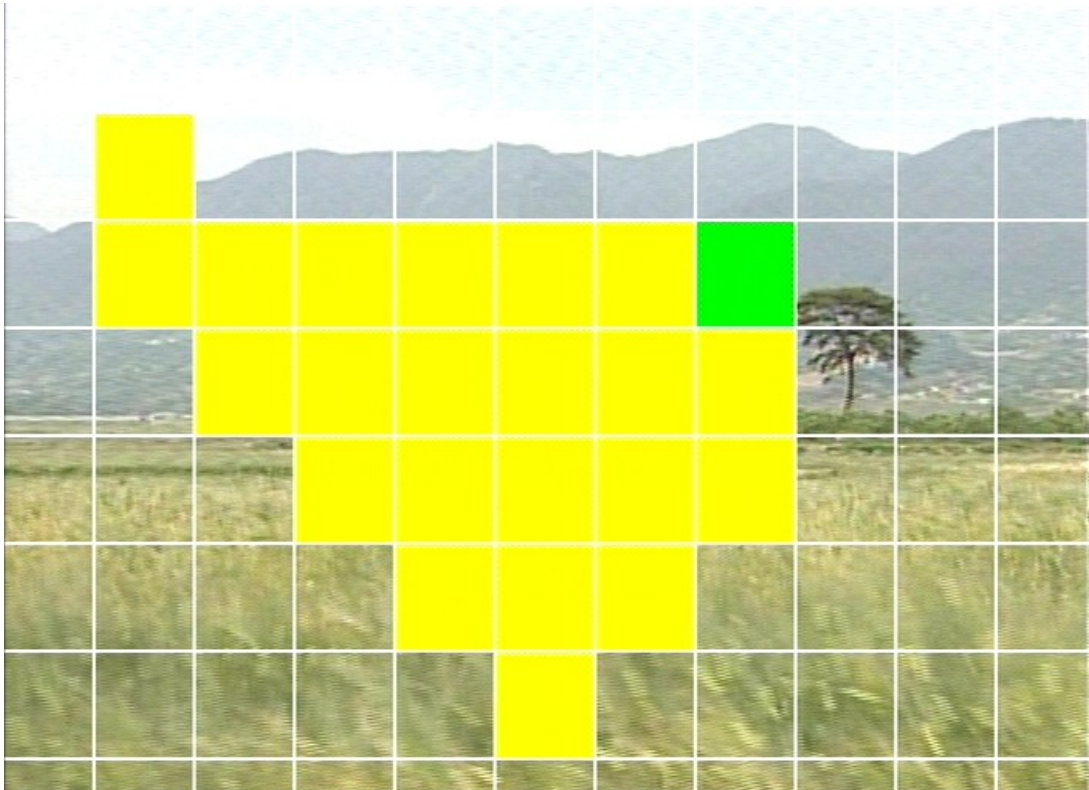


Figure 3-12 Motion Detecting Area Setup screen

Selects the motion detecting area. The sky blue square implies the current cursor and the yellow square implies the area that was already selected as the motion detecting area.

When the cursor positions on the area that was selected as the motion detecting area, it turns green. Above screen is for MUX motion detection set-up and for QUAD motion detection set-up all four screens appear together.

Full screen shall be as the motion detecting areas after entering MULTI button. The reverse key button is SEQ erasing motion detecting area.

3.3.2 Sensor Setting

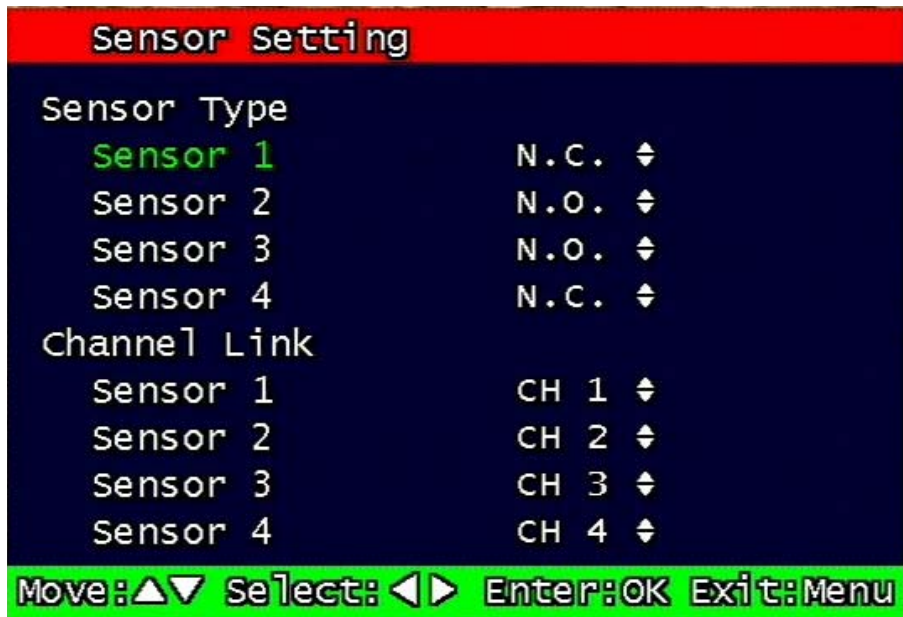


Figure 3-13 Sensor Setting screen

3.3.2.1 Sensor Type

N.O.: Normal Open. Operation mode for the installed sensor's contact point is usually open in normal condition and changed from open to close at sensor's detect event.

N.C.: Normal Close. Operation mode for the installed sensor's contact point is usually close in normal condition and changed from close to open at sensor's detect event.

3.3.2.2 Channel Link

Assign sensors to designated Camera Channels.

3.3.3 Alarm Output

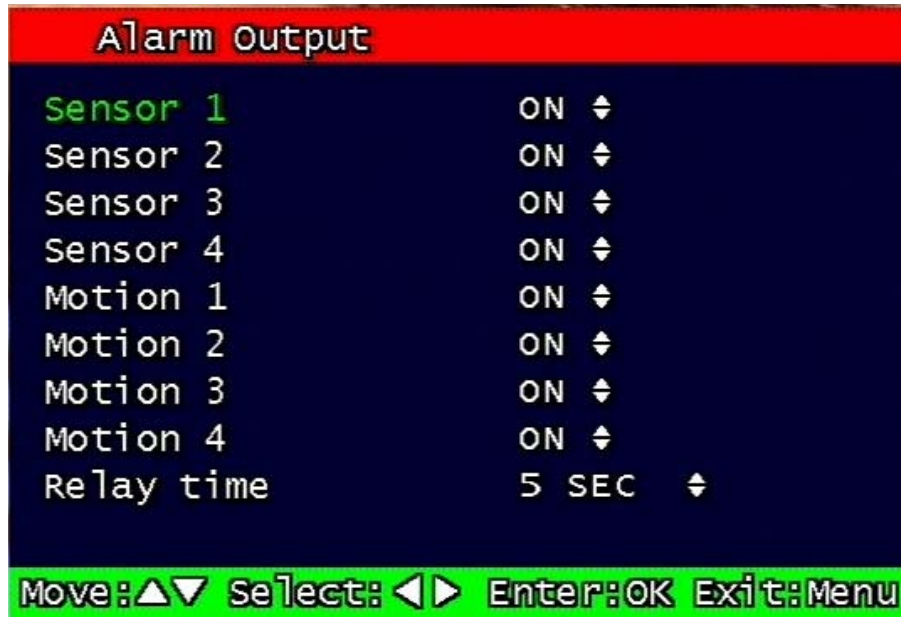


Figure 3-14 Alarm Output Setting:

3.3.3.1 Sensor

Configure the alarm out on/off activated by the sensor.

3.3.3.2 Motion

Configure the alarm out on/off triggered by the motion detection.

3.3.3.3 Relay Time

Configure the alarm duration time. It can be set up from 1 second to 60 seconds in the unit of 5 seconds.

3.3.4 Post Alarm Record Time

Configure the recording continuation time after starting an event recording. It can be set up from 10 seconds to 60 seconds in the unit of 10 seconds.

3.3.5 FTP Setting

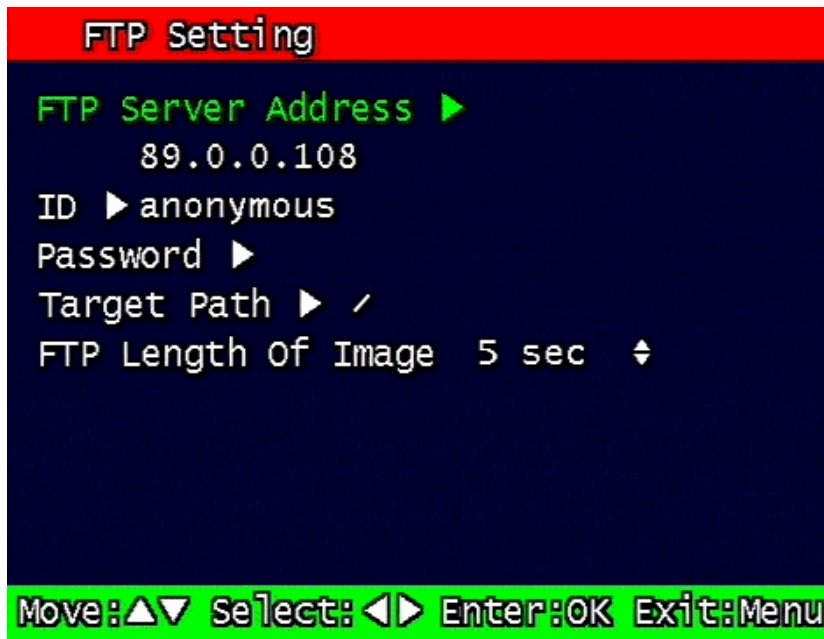


Figure 3-15 FTP Setting

Enables the unit to transmit an assigned FTP Length of Motion picture to an FTP Server over network when an event occurs. The event will be transmitted 15 seconds after the event occurs.

3.3.5.1 FTP Server IP address

Configure the IP address of the FTP server. The number changes by moving left and right, and then it moves to the next digit by pressing the OK button for setting up the next number.

Change the IP address of the FTP server to fast forward or backward by using shuttle equipped in front panel.

3.3.5.2 ID

Configure the FTP ID. The ID can contain maximum of 31 characters.

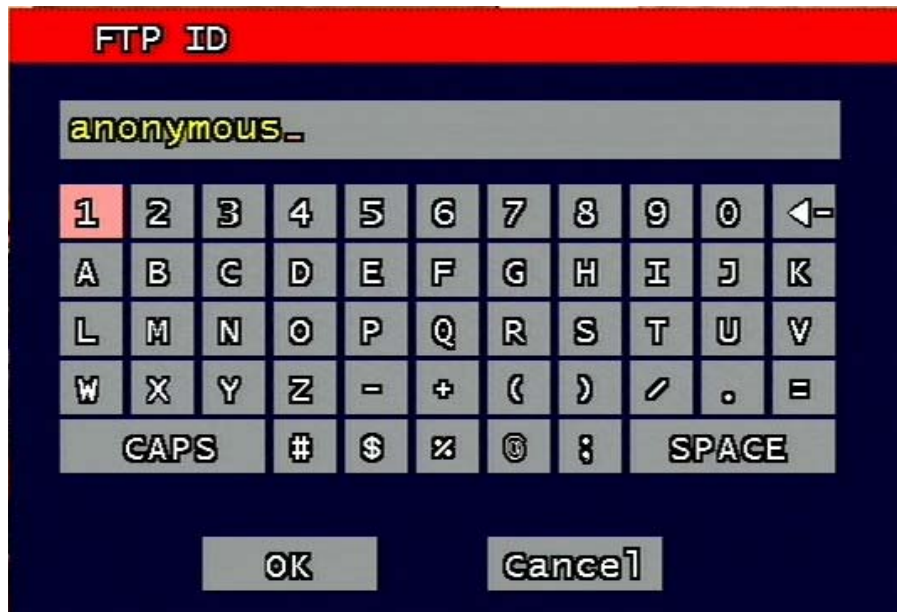


Figure 3-16 FTP ID

3.3.5.3 Password

Configure the FTP password. The password can contain maximum of 12 characters.



Figure 3-17 FTP Password input

3.3.5.4 Target Path

Configure the path to transmit to an FTP server. The path can contain maximum of 31 characters.



Figure 3-18 FTP Target Path

3.3.5.5 FTP Length of Image (second)

Select FTP length of image by second (5 to 10 seconds are selectable) to transmit image files for selected seconds.

3.3.6 FTP Trigger Setting

Selects on/off for transmitting the video file to FTP for each channel.

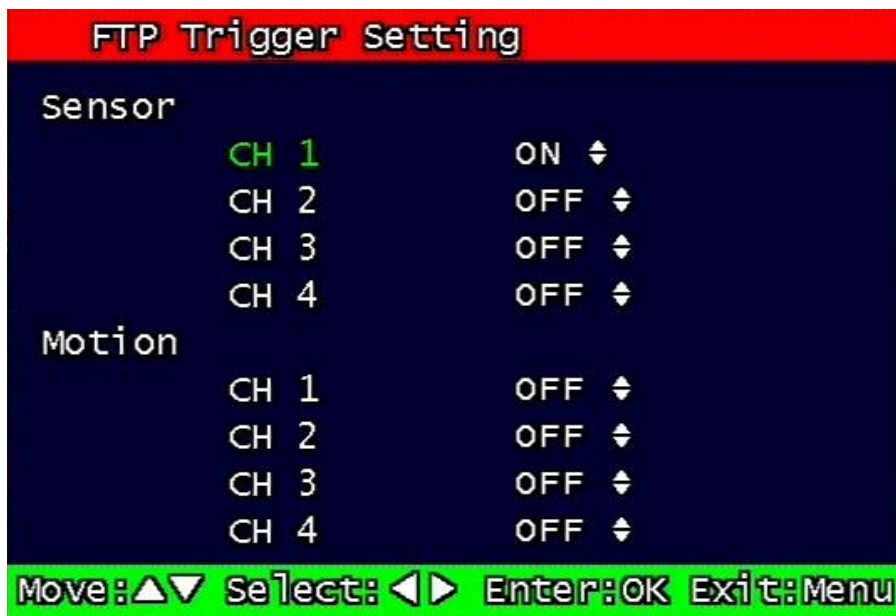


Figure 3-19 FTP Trigger Setting

3.3.6.1 Sensor

Configure sensor events.

3.3.6.2 Motion

Configure motion events.

3.3.7 E-Mail Address Setting

Transmits the content of an event log periodically through e-mail. Configure up to four e-mail address to transmit under event status simultaneously. The e-mail address can contain maximum of 31 characters, and the event logs transmitted through e-mail will be deleted in the DVR unit.

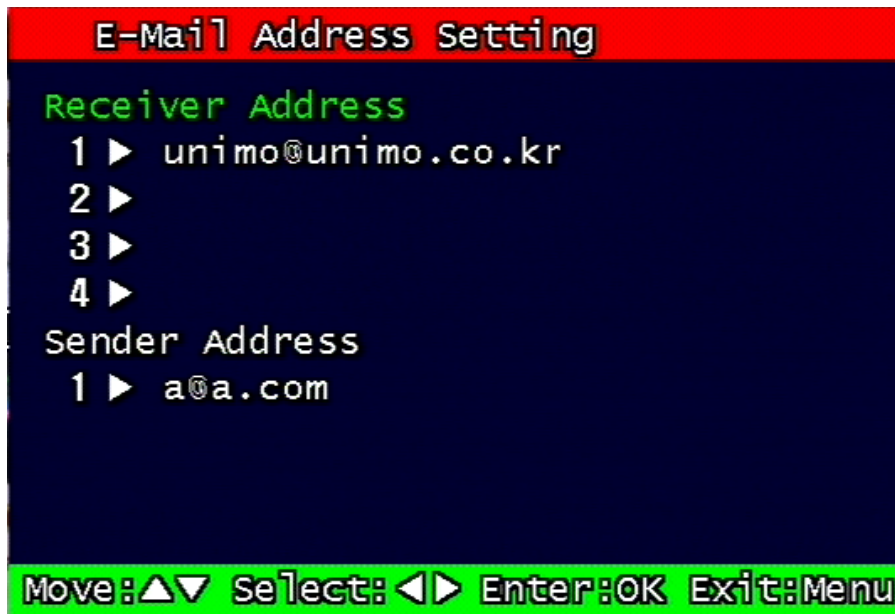


Figure 3-20 E-Mail Address setting

3.3.8 E-Mail Setting

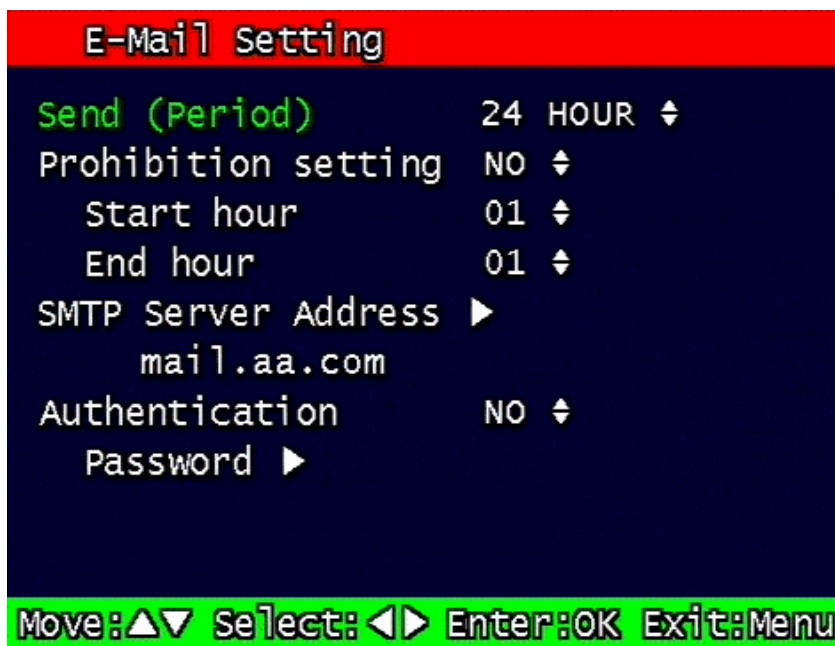


Figure 3-21 E-Mail Setting

3.3.8.1 Send (Period)

Configure the e-mail transmitting cycle. It does not transmit when it is set to NO. The setting time can be set up at the units of within 2 minutes after event, 30minutes, 1, 2, 5, 12, 24 hours.

3.3.8.2 Prohibition setting

Set up prohibition time to transmit the e-mail. Users can enter prohibition time from the starting time and the ending time of transmitting the e-mail

3.3.8.3 SMTP Server IP address

Configure the IP address of the SMTP server to transmit the e-mail.

If you do not know your SMTP server IP address then go to Command Prompt in Windows, then use ping and SMTP name address eg mail.unimo.co.kr as below to get your SMTP IP address. (Same method also applies to finding FTP server IP address from FTP name address).

(Please note IP 211.104.85.230 is only for Unimo employees and will not work for your set-up).

```
C:\>ping mail.unimo.co.kr
```

```
Pinging mail.unimo.co.kr [211.104.85.230] with 32 bytes of data:
```

```
Reply from 211.104.85.230: bytes=32 time=342ms TTL=114
```

```
Reply from 211.104.85.230: bytes=32 time=344ms TTL=114
```

```
Reply from 211.104.85.230: bytes=32 time=347ms TTL=114
```

```
Reply from 211.104.85.230: bytes=32 time=350ms TTL=114
```

```
Ping statistics for 211.104.85.230:
```

```
    Packets: Sent = 4, Received = 4, Lost = 0 (0% loss),
```

```
Approximate round trip times in milli-seconds:
```

```
    Minimum = 342ms, Maximum = 350ms, Average = 345ms
```

3.3.8.4 Authentication

Users can select authentication process dependent on SMTP server requirement.

Selects on/off for authentication process do authentication process whenever transmitting e-mail messages through SMTP server.

3.3.8.4.1 Password

Enter sender's mail password for authentication

3.3.9 Event Log

Shows the event log of the selected channel. It can reset periodically by setting e-mail as described in paragraph 3.3.7.



Figure 3-22 Event Log Display screen

3.4 Playback Setup

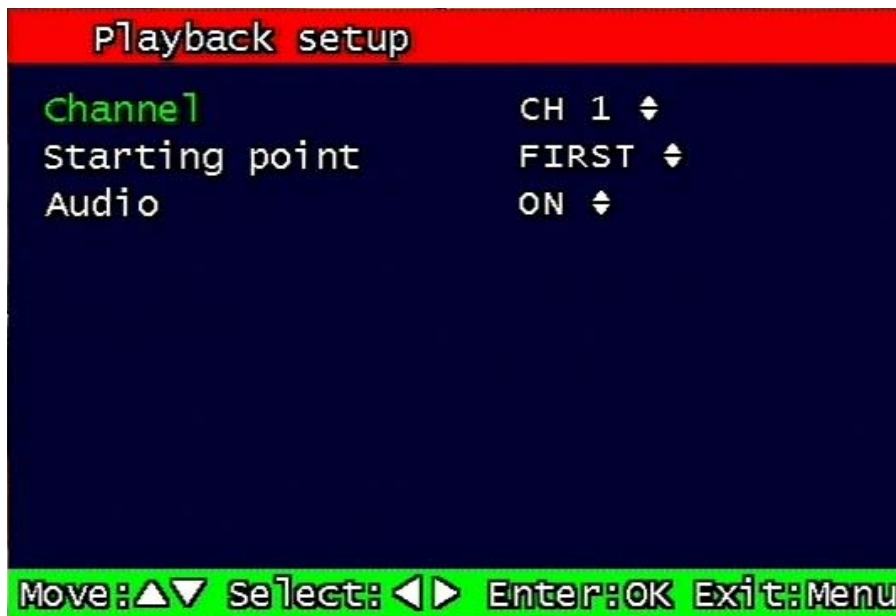


Figure 3-23 Playback setup screen

3.4.1 Channel

Designate the channel to be viewed when the “Replay” button is pressed and Channel 1 ~ Channel 4 can be selectable.

This option is only available when the MUX mode has been selected. (Please refer to paragraph 3.2.1 for Record type)

3.4.2 Starting Point

This starting point configures the starting position when the “Replay” button is pressed.

- FIRST: This can search for and replay the oldest recorded images from the selected channel.
- LAST: This can search for and replay the latest recorded images from the selected channel.

3.4.3 Audio

If the recorded files contain audio, choose whether to turn the sound ON/OFF when the “Play” button is pressed.

3.5 Display Setup screen

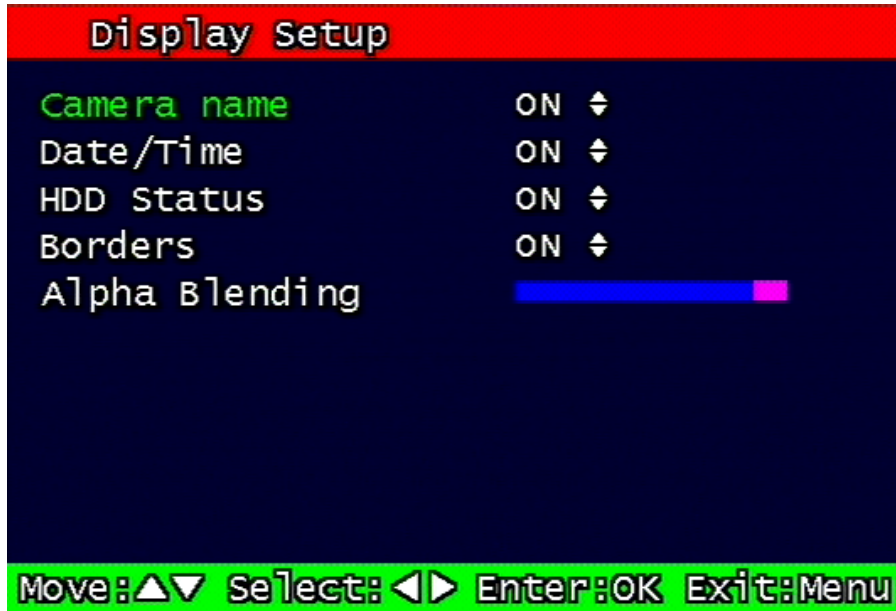


Figure 3-24 Display setup screen

Determine whether to have the following be shown on the monitor: Camera name, Time/Date, HDD status, Borders (Quad View). Select either ON/OFF for each item.

3.6 Network Setup screen

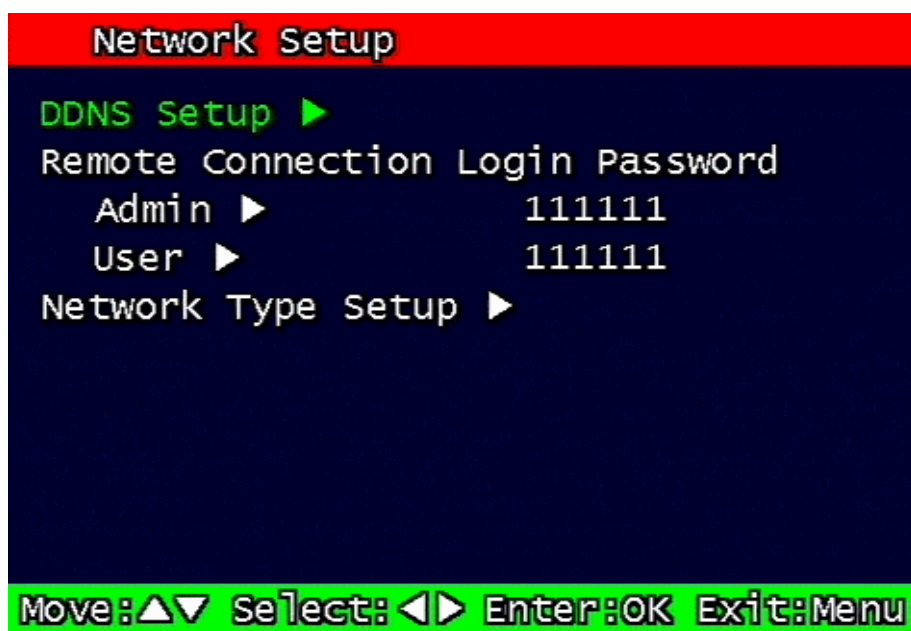


Figure 3-25 Network Setup screen

3.6.1 DDNS setting

Set up DDNS (Dynamic Domain Name System) server address & port number.

Users can set up two DDNS server address and port.

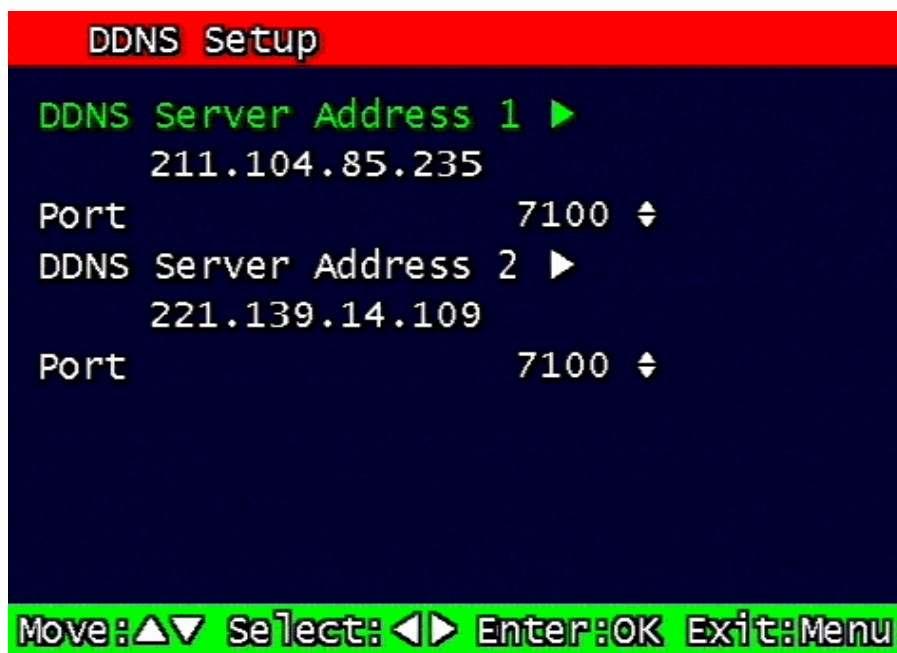


Figure 3-26 DDNS setup screen

Under DHCP or PPPoE configuration using IP Router, the DVR will receive an IP address periodically, and each time, the IP address can be different. Therefore, in order for users to access the DVR over the network, it must update its IP address to the DDNS Server.

Under IP router configuration, IP of DVR must be setup as static IP address and it must update its IP address to the DDNS server. Therefore DDNS Link on NETWORK SETUP menu should be on. (When IP router is connected from static IP, it is no necessary to setup DDNS link on)

By indicating the address of a DDNS Server, the UDR-204 will update its IP address and its MAC address periodically. Therefore, when users access the DVR over the network, the same URL can be used. For example, if the DVR has a MAC address of "00:09:F8:12:34:56" and the domain name of the DDNS server is "ns.udrdns.net", the users can access the DVR with the URL "u123456.udrdns.net" The DDNS will know which machine to resolve the URL because it would contain an updated IP address and MAC address list.

The factory default value of the DDNS server address from UNIOM Technology Co, Ltd. is as follows:

- ◆ DDNS address: 211.104.85.235
- ◆ DDNS connection port: 7100

If users wish to operate the DDNS server by themselves, please contact us.

3.6.2 Remote Connection Login Password

There are two levels of access that can be set up in the RAMS program.

- Admin (Highest), User (Normal)
- By default, the password is 111111 when the software is first installed.

Users can use any numeric number from 0~4, combined 6 units.



Figure 3-27 Remote Connection Login Password screen

3.6.3 Network Type

Choose one type from the following: Static, DHCP, & PPPoE.

Static mode uses fixed assigned IP address in the network.

DHCP (Dynamic Host Configuration Protocol) receives an IP address from the DHCP Server, and it may change according to the lease period.

PPPoE (PPP over Ethernet) mode is used for network using PSTN such as ADSL.

Please refer to paragraph 3.6.4, 3.6.5, 3.6.6 for detailed network type setup process

3.6.4 Static

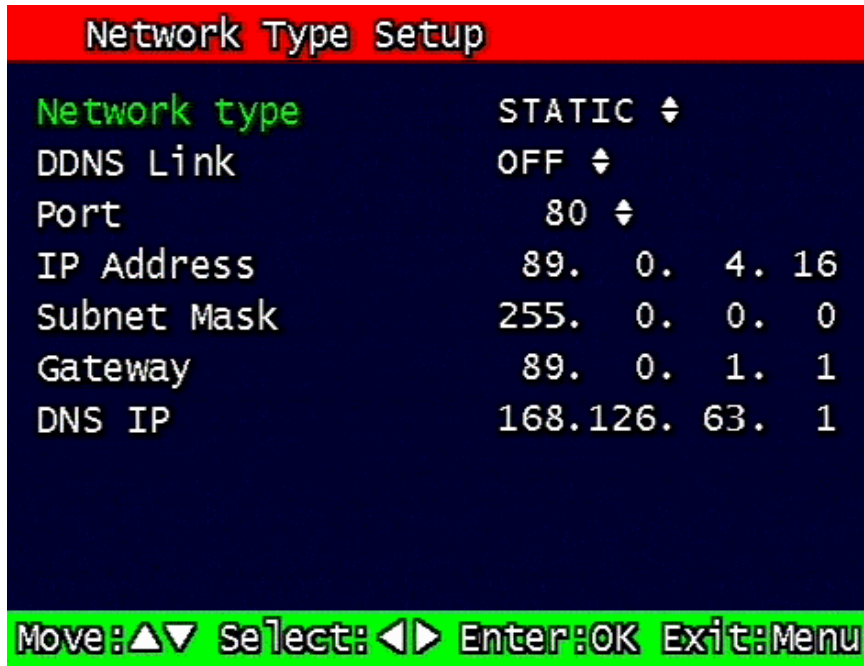


Figure 3-28 Static Network setting

3.6.4.1 DDNS On/off

3.6.4.2 Port

Configure the Port number to be used to connect to the UDR-204 system using RAMS (Remote Access & Monitoring System). The default Port number is port 80. Change easily by using Jog/shuttle equipped in front panel.

3.6.4.3 IP Address

Assign a fixed IP address to the UDR-204. Change easily by using Jog/shuttle equipped in front panel.

3.6.4.4 Subnet Mask

Assign the Subnet Mask. Change easily by using Jog/shuttle equipped in front panel.

3.6.4.5 Gateway

Assign the Gateway address

Change easily by using Jog/shuttle equipped in front panel.

3.6.5 DHCP

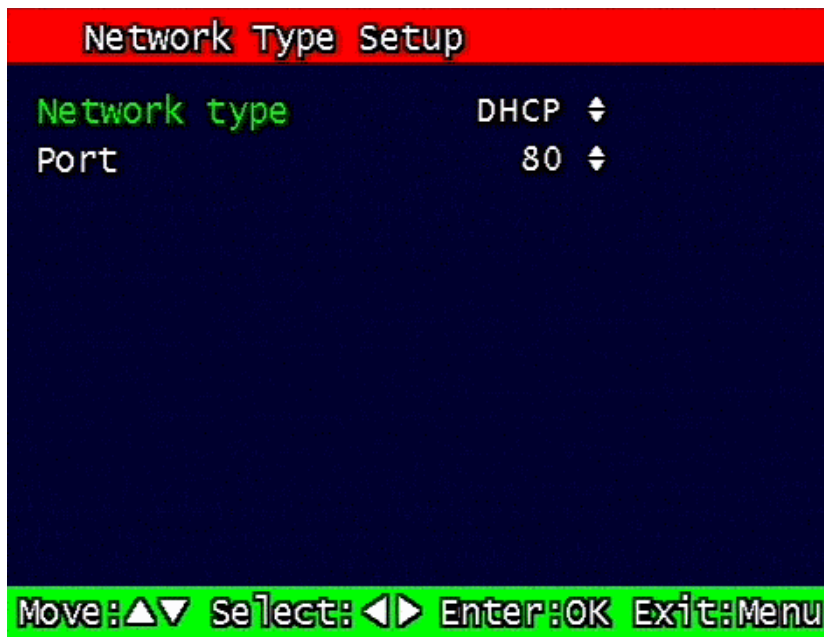


Figure 3-29 DHCP setup screen

3.6.5.1 Port

Please refer to paragraph 3.6.4.1 for Port setting of Static/ DHCP/ PPPoE)

3.6.6 PPPoE

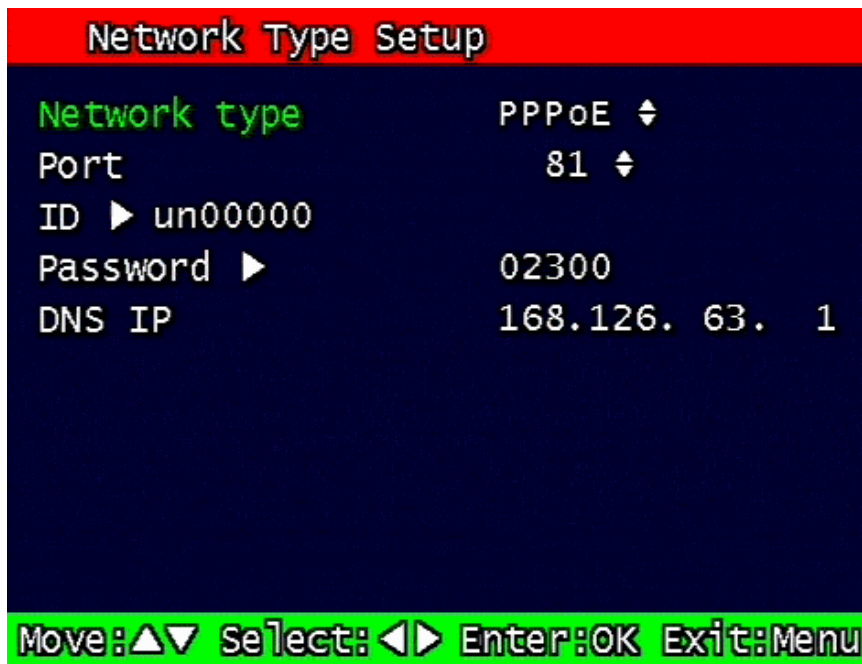


Figure 3-30 PPPoE setting

3.6.6.1 Port

Please refer to the port setting in paragraph 3.6.4.

3.6.6.2 ID

Type in your user ID for the ADSL account (PPPoE).

The password can contain maximum of 31 characters.



Figure 3-31 ID input screen

3.6.6.3 Password

Type in your user Password for the ADSL account (PPPoE),

The password can contain maximum of 12 characters.

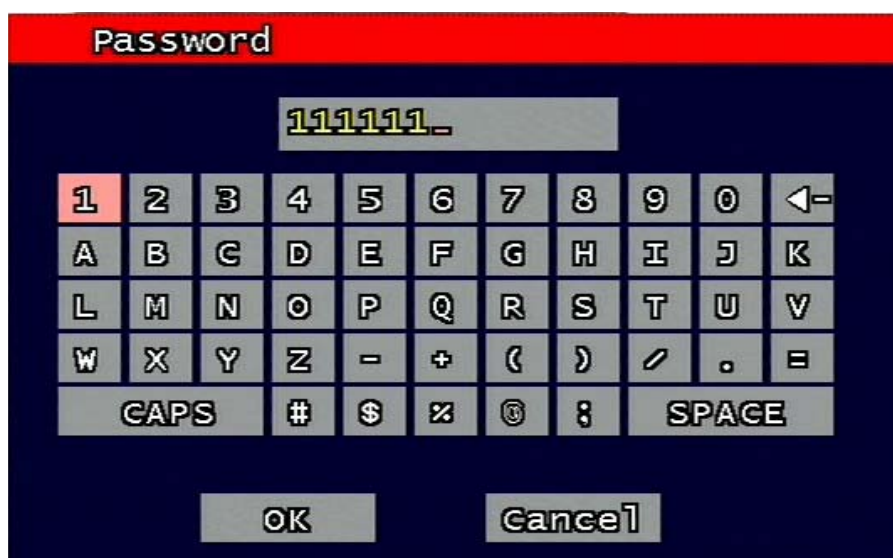


Figure 3-32 Password input screen

3.6.7 Changing the Network configuration

If users want to change network type of UDR-204, users must reboot the system. User can restart the new network mode setting after entering 'yes' key button.

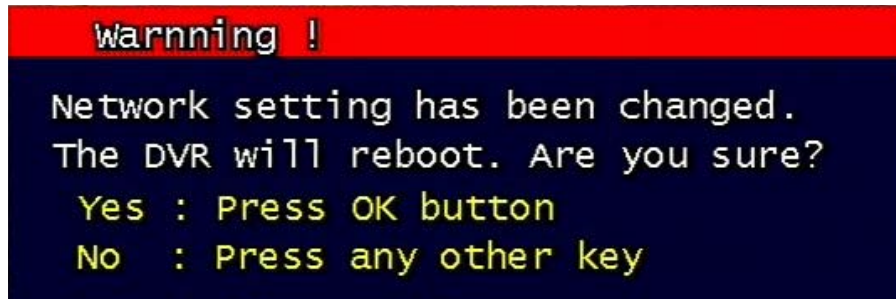


Figure 3-33 Changing the Network setting screen

3.7 System Setup screen

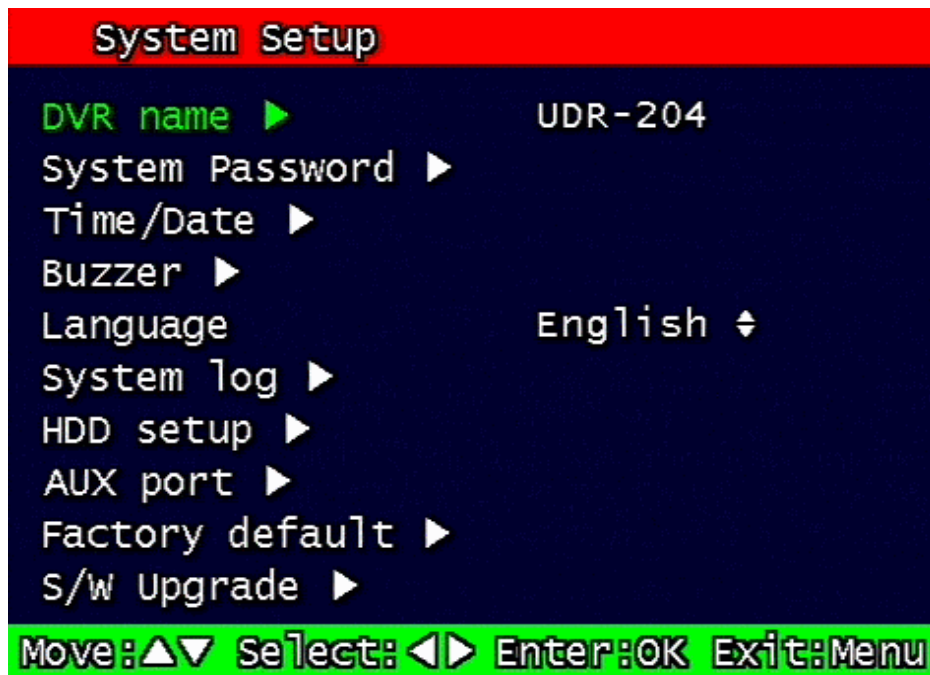


Figure 3-34 System Setup screen

3.7.1 DVR Name

Type in the name of the DVR you wish to assign. The name can contain maximum of 12 digits.



Figure 3-35 DVR name screen

Using the arrow, type in the DVR name.

Click "OK" when finished.

3.7.2 System Password



Figure 3-36 System password set up

Set up part for system password, related function and application.

This is a part of installation, actual system password, related function and password application.

3.7.2.1 Password Setting

To change system password:

First, type-in the current password, confirm. Then if it is correct, type-in the new password twice. If they match, the password has been changed.

Users can use any numeric number from 0~4, combined 6 units.

Password input screen (present, new, confirm, if it is wrong -twice, confirm to change)

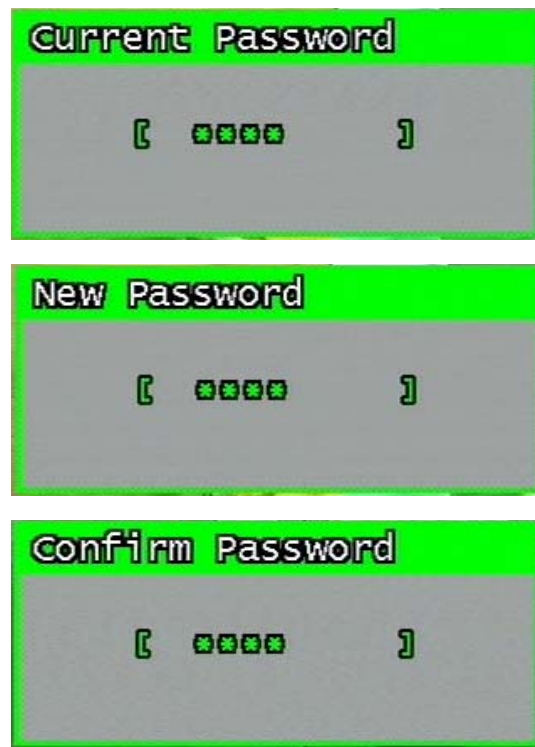


Figure 3-37 Password input screen

3.7.2.2 Password Apply

Determine whether the system password has to be applied to power On/Off. The applicable features are recording close, enter menu, system off. Users can set up password ON/OFF for each feature.

Setting to On, when each feature starts, users have to confirm password for each step. Setting to Off, users can use any confirmation of password.

3.7.2.3 Auto Key Lock

Possible Setting time is every 30sec, 1 min, 3min, 5min, 10 minutes. If users choose setting time among them, auto key lock function will start exactly after the setting time and lock key type icon will be displayed at the bottom of window. Users can access system operation after release from key lock state by entering right current password..

3.7.3 Time / Date

Users can configure the view of time & date on the system, as well as, Day Light Saving Time.

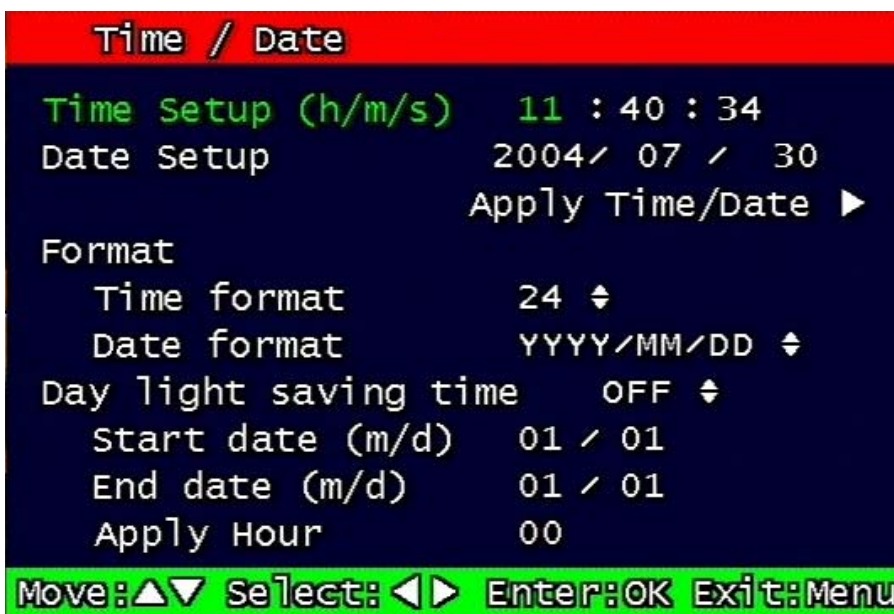


Figure 3-38 Set up Time/Date

3.7.3.1 Set up Time / Date

Set up date and time on the system

3.7.3.2 Time / Date Format

Set up format for date and time. There are two types of time: 24hr circle/ 12hr circle. Date format can be set up as the following: YYYY/MM/DD, MM/DD/YYYY, DD/MM/YYYY.

3.7.3.3 Day Light Saving Time

Set up Start Day and End Day in Day Light Saving Time mode

For example, if users adopt day light saving time from May 01 to Oct.31, input the dates accordingly.

3.7.3.3.1 Apply

Configure Day Light Saving Time.

3.7.3.3.2 Start date (m/d)

Set up start day in Day Light Saving Time mode.

3.7.3.3.3 End date (m/d)

Set up end date in Day Light Saving Time mode.

3.7.3.3.4 Apply hour

Set up the duration time in Day Light Saving Time mode.

3.7.4 Buzzer

Users can turn the buzzer On/Off depending on the situations. Usable situation is Sensor, Motion, & Video Loss. When users activate the buzzer, buzzer will make a sound when there any event occurs. There would be no sound if the buzzer is turned Off.



Figure 3-39 Set up buzzer

3.7.5 Language

English, Korean, Japanese and Spanish are available.

3.7.6 System Log

It is for displaying major system events.

The items that manage by Log are Video Loss, Power On, Power Off, Menu entry, HDD Full, failure of FTP transmission, failure of E-mail transmission.

System Log		1022 Lists Found		
[1]	2004-07-30	11:40:30	FTP FAILED
[2]	2004-07-30	11:39:30	FTP FAILED
[3]	2004-07-30	11:38:29	FTP FAILED
[4]	2004-07-30	11:37:33	MENU CALLED
[5]	2004-07-30	11:37:29	FTP FAILED
[6]	2004-07-30	11:37:16	MOTION CH-03
[7]	2004-07-30	11:37:16	MOTION CH-02
[8]	2004-07-30	11:37:14	SENSOR 4
[9]	2004-07-30	11:37:14	SENSOR 1
[10]	2004-07-30	11:37:09	POWER ON

Page Move : ▲▼◀▶ Exit : Menu

Figure 3-40 System Log screen

3.7.7 HDD Setup

Set up for Internal HDD and Removable HDD, See the information.

HDD Setup	
Mounted HDD	2
Write Mode	OVERWRITE ◄
Internal HDD	
Capacity	73GB / 75GB
format ▶	
Removable HDD	
Capacity	0GB / 76GB
Function	MANUAL BACKUP ◄
format ▶	

Move:▲▼ Select:◀▶ Enter:OK Exit:Menu

Figure 3-41 HDD Setup image

3.7.7.1 The number of HDD

Show the HDD quantity that is built –in.

3.7.7.2 Write Mode

Set up writing type in recording.

Types are 'Once' and 'Overwrite'. If set up by 'Once', HDD can record until the Full state. If set by 'Overwrite', HDD will record continuously by start overwrite oldest data.

3.7.7.3 Forced erasure

The images recorded earlier than specific date can be erased by force.

The number of dates for erasure can be selected from 1 ~ 100.

In case that "off" is setup, the recorded images shall not be erased,.

In case that "30" is setup, the images recorded 30 days earlier than today shall be erased.

3.7.7.4 Internal HDD

3.7.7.4.1 Capacity

Indicate the used part and total capacity of Internal HDD.

Used part of HDD (GB) / Full capacity of HDD (GB)

3.7.7.4.2 Format

This is function for internal HDD formatting and you must reboot the system after this instruction. Confirmation box on format will appear after entering format key. User can format and erase all information of HDD, after entering 'yes' key button.

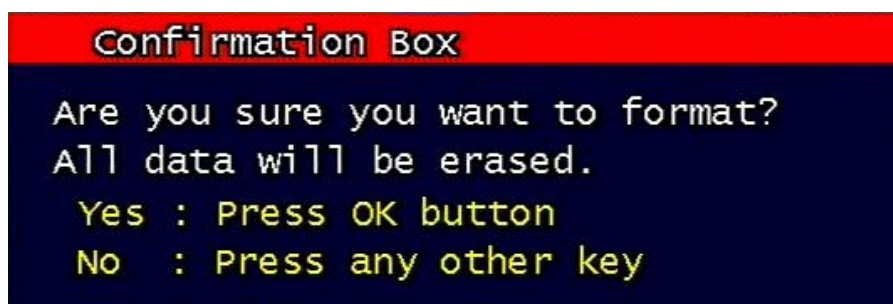


Figure 3-42 Confirmation box for HDD format

3.7.7.5 Removable HDD

If one Hard disk drive is equipped in system, removable HDD doesn't appear.

3.7.7.5.1 Capacity

Please refer to paragraph 3.7.3.1.

3.7.7.5.2 Function

Set up for Removable HDD usage. Users can fix it for manual Backup, Auto backup, Extension. If it is fixed to manual backup, users can use for manual backup. It is fixed to auto backup, system will automatically backup recording image. If it is fixed by extension, it will be the same as Internal HDD.

If backup mode (Manual, Auto backup) is changed to extension mode, warning box on HDD function change will appear after entering 'yes' key button and it can erase all information of Removable HDD.

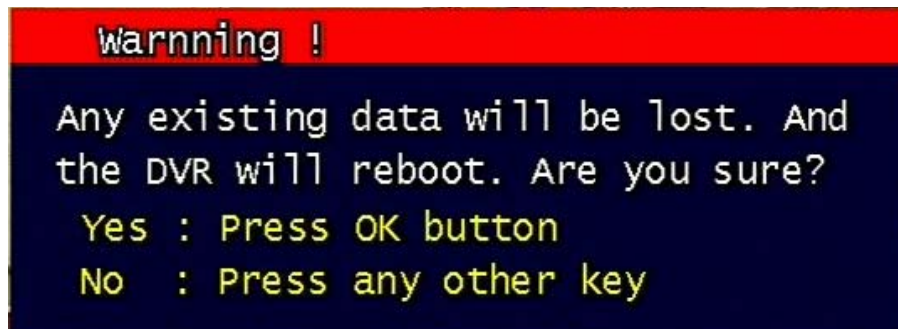


Figure 43 Change of HDD Function mode

3.7.7.5.3 Format

Please refer to paragraph 3.7.7.3.2.

3.7.8 Aux Port

Set up for Aux Port

AUX Port				
Port	I/O	Active	Function	
1	IN	HIGH ↕	ALARM RESET	IN ↕
2	IN	HIGH ↕	UNUSED	↕
3	OUT	HIGH ↕	DISK FULL	↕
4	OUT	HIGH ↕	ERROR OUT	↕
5	OUT	HIGH ↕	ALARM OUT	↕

Move: ▲▼ Select: ◀▶ Enter: OK Exit: Menu

Figure 3-44 Set up AUX port screen

3.7.8.1 Active

Set up Active state. Low/High will be different depend on machine..

3.7.8.2 Function

The following list contains a brief description of each function.

3.7.8.2.1 Direction : IN

- UNUSED: Do not use the AUX port.
- ALARM RESET IN: Pause alarm or buzzer when event occurred
- RECORD START IN: Record image during user push the button
- RECORD ON/OFF: Recording start/stop during user push the button & same as pushing remote controller or DVR machine

3.7.8.2.2 Direction : OUT

- ALRAM OUT: Notice the assigned port when event occurred
- ERROR OUT: Notice the assigned port when system error occurred (Mark system error)
- RECORD START OUT: HDD of DVR is full, send signal to DVR which is connect with AUX port. During receiving recording signal through AUX port, it can record it and the mode of DVR AUX in port is RECORD START IN.
- DISK FULL: If HDD is full, send signal to the AUX port.
- RECORD STATUS: Indicate whether it is recording or not

3.7.9 Factory Default

All of set-up date of system comes back to Factory default.

Confirmation box on picture setting default will appear after entering default. User can restore the factory default setting after entering 'yes' key button.

Please refer to paragraph 5.3 for factory default.

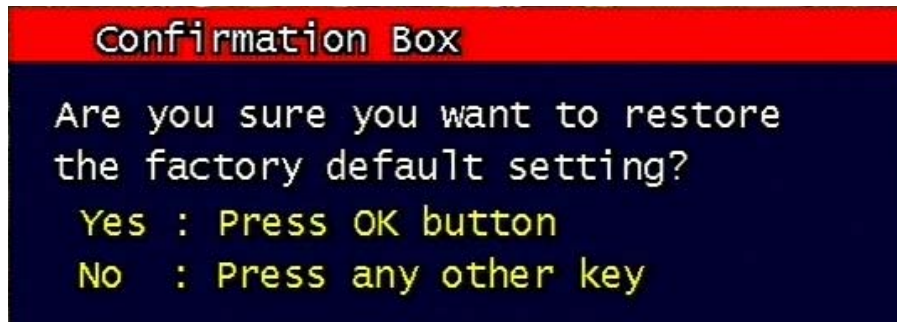


Figure 3-45 Confirmation box for Factory Default

3.7.10 Software Upgrade

Users can upgrade the software of Ramdisk and Kernel using the USB flash drive (thumb drive) by the following steps.

- Download the latest version of software (Ramdisk/Kernel) from the following address.

* <ftp://ftp.udrdns.net/UDR-204/Software/>

- Copy the downloaded files from the PC to the USB memory.

- Connect the USB memory to the USB port at the rear panel.

- Go to 'System Setup' then 'S/W Upgrade' then select Ramdisk or Kernel to upgrade.

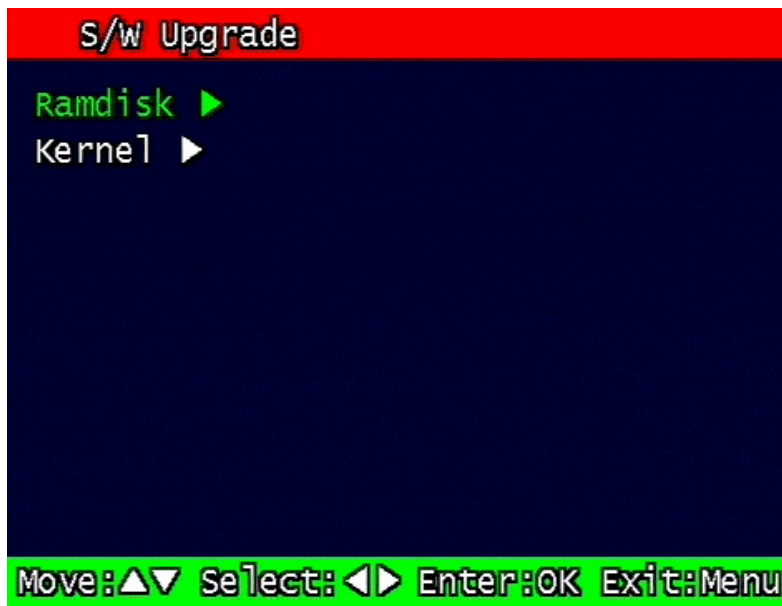


Figure 3-46 Software Upgrade

- After the unit recognizes the USB flash drive and upgrading end, the unit will reboot.



Figure 3-47 Ramdisk Upgrade

3.8 Backup

Backup recording data to HDD or USB Flash Drives

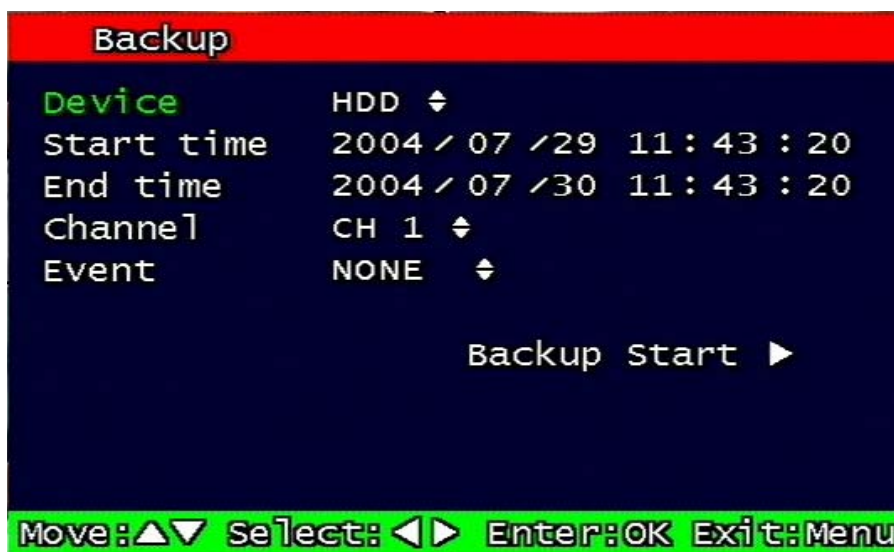


Figure 3-48 Backup image

3.8.1 Backup Device

Set up the device for backup. HDD / USB/ CD-RW are available

In order to use HDD for backup, the function of HDD should be setup as "Manual Backup"

In the HDD Setting.

3.8.2 Start Time

Input the start of backup date and time.

3.8.3 End Time

Input the end of backup date and time.

3.8.4 Channel

Choose the channel to backup.

3.8.5 Event

Choose the event to backup. In case of none mode, selected files according to time will be backed-up.

3.8.6 Backup Start

Based on the input date, time, channel and event & other condition search the images will be backed-up to the chosen device. Back up progress rate is marked on the bottom right side of the screen.

3.8.7 Format

This menu is used only when backup device is CD-RW. In case that backup device is CD-RW, format command has to be done by this menu, before starting backup.

However, with CD-R media, backup can be started without format.

3.9 System Information

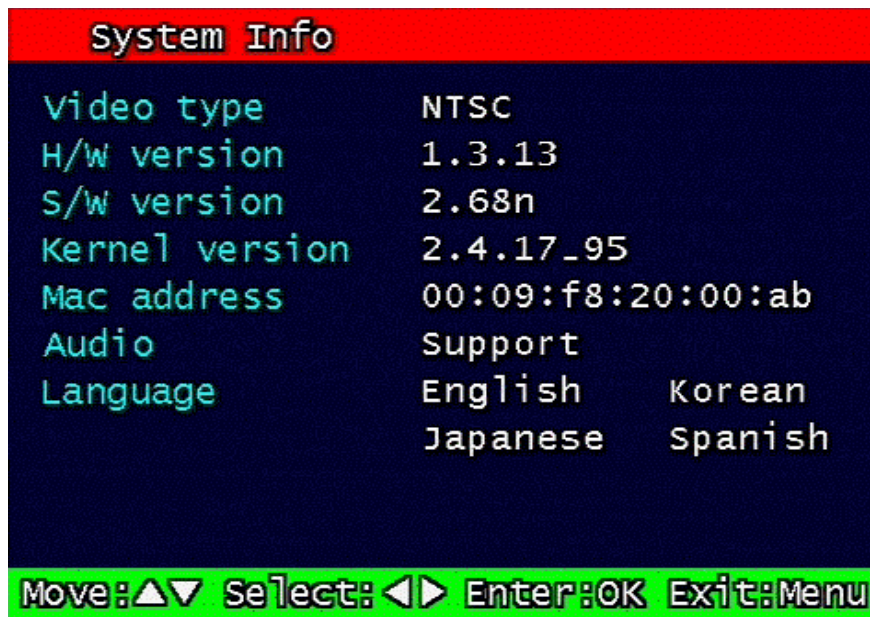


Figure 3-49 System Information

3.9.1 Video type

It shows that present Video type of System is NTSC or PAL.

3.9.2 H/W version

It shows the H/W Version of system.

3.9.3 S/W version

It shows the S/W Version of system

3.9.4 KERNEL version

It shows the S/W Version of KERNEL.

3.9.5 Mac Address

It shows Mac Address of system

3.10 Search Menu



Figure 3-50 Main Screen of Search

3.10.1 Search by Time

The recorded images are searched by Time, Channel, Event. UDR-204 saves last searching condition so it automatically displayed last search condition under search mode.

** Screen where the condition of search will be input.



Figure 3-51 Search by time

3.10.1.1 Starting Time

Starting Time and date for Search is input.

The starting year range is from 1970 to 2037, and it is not possible to input any year after 2037.

3.10.1.2 Ending Time

Ending Time and date for Search is input.

The ending year range is from 1970 to 2037, and it is not possible to input any year after 2037.

3.10.1.3 Channel

Select the channel for Search from Channel 1 ~ Channel 4.

3.10.1.4 Event

Select the Event as follows.

- NONE : All of files are searched regardless of Event.
- MOTION : The file recorded by MOTION is searched.
- SENSOR : The file recorded by SENSOR is searched.

3.10.1.5 Example of Search Result

1 / 6 page (54 file found)					
Start(Y/M/D H:M:S)	End(Y/M/D H:M:S)	Ch	Mode		
04/07/29 11:49:17	04/07/29 11:50:00	1	F		
04/07/29 11:50:00	04/07/29 11:55:00	1	F		
04/07/29 11:55:00	04/07/29 12:00:00	1	F		
04/07/29 12:00:00	04/07/29 12:05:00	1	F		
04/07/29 12:05:00	04/07/29 12:10:00	1	F		
04/07/29 12:10:00	04/07/29 12:15:00	1	F		
04/07/29 12:15:00	04/07/29 12:20:00	1	F		
04/07/29 12:20:00	04/07/29 12:25:00	1	F		
04/07/29 12:25:00	04/07/29 12:30:00	1	F		
04/07/29 12:30:00	04/07/29 12:35:00	1	F		

Move: ▲▼ Page Move: ◀▶ Enter: OK Exit: Search

Figure 3-52 Screen of result of search by time

3.10.2 Search of still image

Still image is not searched by Time and Channel.

If users press “search” Button, the still images recorded in the system appear from the oldest one to latest one, and Maximum 99 still images can be stored and searched

3.10.2.1 Screen of search

still Image List		
No	Time (Y/M/D H:M:S)	Ch
[1]	2004/07/26 16:45:04	1
[2]	2004/07/26 16:45:05	1
[3]	2004/07/26 16:45:07	1
[4]	2004/07/26 16:45:08	1
[5]	2004/07/26 16:45:09	1
[6]	2004/07/26 16:45:10	1
[7]	2004/07/26 16:45:11	1
[8]	2004/07/26 16:45:12	1
[9]	2004/07/26 16:45:13	1

Move: ▲▼ Page Move: ◀▶ Enter: OK Exit: Search

Figure 3-53 Search Screen of Still Image

3.10.3 Search of back up HDD

The images that were backed up manually or automatically can be searched by Time, Channel, Event.

Backup HDD Search	
Start time	2004 / 07 / 29 11 : 47 : 27
End time	2004 / 07 / 30 11 : 47 : 27
Channel	CH 1 ◆
Event	NONE ◆
Search ▶	

Move:▲▼ Select:◀▶ Enter:OK Exit:Search

Figure 3-54 Screen for input data of HDD Search

The method of input and search is the same as that of recorded file, as indicated in the paragraph 3.10.1.

3.11 PLAYBACK

3.11.1 PLAYBACK of recorded Images

This function means that the images recorded in the system are searched by Time or Played back directly.

3.11.1.1 Method of playback

In order to play back the recorded images, put the Curser to the selected content in the Menu of Search, and press Button “OK”.

The screen of Search results disappears and the selected images are played back.

The recorded files with Audio are played back with Audio.

3.11.1.2 Screen of played back.



Figure 3-55 Screen of playback

3.11.1.3 Control during play back

3.11.1.3.1 Stop of Play back

If user needs to stop play back, user should press button “ STOP”

in the remote controller of in the system, and play back stops and live screen is coming back.

3.11.1.3.2 Temporary Stop during Playback

In order to stop temporarily playback, press button “ PAUSE”.

If users press the button “PAUSE” again, play back continues.

3.11.1.3.3 Speed level of Play back

There is 7 Speed levels for playback (Normal, Fast mode) in the forward and backward direction as well.

There is 2 speed levels for slow playback mode in the forward and backward.

If user needs faster speed of playback, users press button “RIGHT” and speed is controlled.

If user needs slower speed of playback, users press button “LEFT” and speed is controlled.

3.11.1.3.4 Change of Direction of Playback

There's forward and Backward directions.

In order to change direction from Forward to Backward, user press the button “ REVERSE PLAY” and backward playback starts with normal speed. On the contrary, to change direction from Backward to Forward, user press the button “PLAY” and Forward playback starts with normal speed.

3.11.1.3.5 Select of channel of Playback

This function is applied to MUX recording as well as Quad Recording.

- Under Quad recording type: Select the channels by using button “1” ~ “4” and selected channels show the Image With Digital Zoom. User press the button “MULTI”, Quad screen is played back.

- Under MUX recording type: Select the channels by using button “ 1” ~ “4” and selected channels show the image which recorded at simultaneous time. If there are recorded image, it will show the image which close to recorded time at previous playback channel.

3.11.1.3.6 Audio ON / OFF

In case of recorded image with Audio, user can on or off by using the button "AUDIO MUTE".
The Icon in the top of screen shows the status (On / Off) of AUDIO.

3.11.2 Playback of still image

3.11.2.1 Method of playback

As the paragraph 3.2.1, users put the cursor to contents. In the searched still Image Lists, and press Button "OK".

The screen of search list disappears and still image is played back as the paragraph 3.2.1.

3.11.2.2 Screen of playing back



Figure 3-56 Still Image of playing back

3.11.2.3 Control during Play back

3.11.2.3.1 Stop of play back

To stop the playing back, User press button "STOP" or "SEARCH".

Playback stops and screen of search list appears.

3.11.2.3.2 Next screen

Press Button “RIGHT” and next screen is played back.

3.11.2.3.3 Previous screen

Press Button “LEFT” and previous screen is played back.

3.11.3 Playback the backed up-image

This function means that the images in the backup HDD that were backed up manually or automatically from the recorded images in the system are played back.

The functions for Playback of backed up images, screen during playback, control during playback are same as those of Playback of Recorded images, as the paragraph 3.11.1

3.12 Miscellaneous Menu



Figure 3-57 Miscellaneous Menu

This menu is to use the five functions that are placed only on the remote control but on the keypad of the unit

3.12.1 NET

Displays the current network IP and the user connected to the network.

(it substitutes the NET button on the remote control).

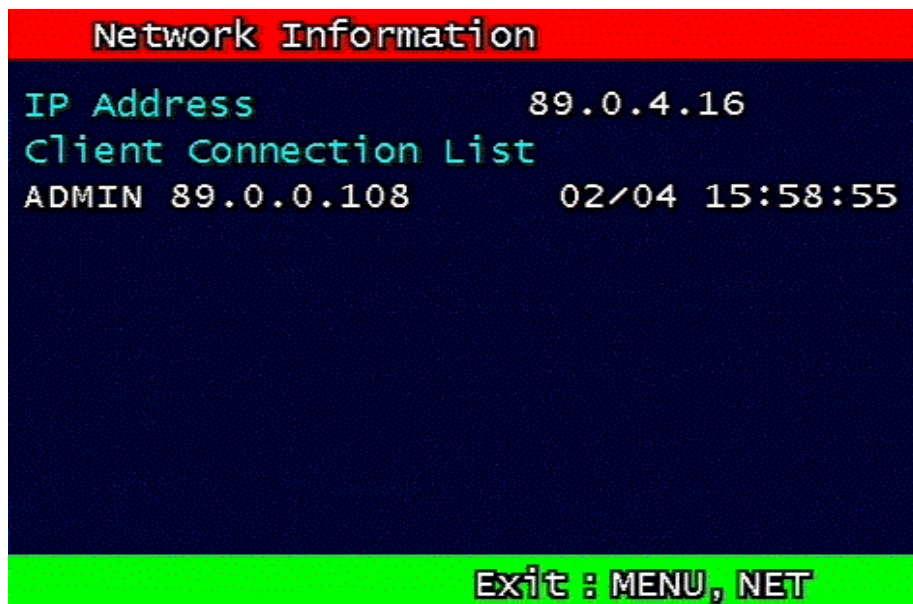



Figure 3-58 Network Information

3.12.2 OSD

Turns on/off the OSD (On Screen Display). It substitutes the OSD button on the remote control.

3.12.3 Audio Mute

Turns on/off the audio. It substitutes  button on the remote control.

3.12.4 HDD

Displays the HDD information. It substitutes the HDD button on the remote control.

3.12.5 LOG

Display the System Log. It substitutes the LOG button on the remote control.

4. UDR-204 Client program

4.1 Overview of UDR-204

- UDR-204 (UNIMO Digital Video Recorder, MPEG-2, 4channel) has three types of client operation programs.
- **RAMS** (Remote Access & Monitoring System) is used to remotely access, monitor, and operate the DVR for real-time live viewing, playback, backup, on-the-fly recording, and control over the LAN/WAN.
- **UniPlayer** is a viewer with functions for recording, capturing, & backing up files.
- **Multiviewer** is to monitor multiple DVR, both locally and remotely. (Up to 16 Channels: for example, 4x4CH DVR, or 16x1CH DVR)
- QuickInstaller is a setup configuration template for quick & easy, multiple unit setup using RS-232 or network. It can be used to derive setting parameters of DVR system and to save setting parameters to DVR system.

4.1.1 PC requirement (minimum)

- DirectX 8.0
- Explorer 5.0
- Video card memory 32MB memory
- Resolution 1024 x 768

4.2 Installation & execution of program

- Please use DirectX 8.0 or newer.
 - <http://www.microsoft.com/windows/directx/default.aspx> - English
 - <http://www.microsoft.com/korea/directx/default.aspx> - Korean
- To ensure optimal performance, install the latest graphics driver.
- Install UDR-204 by clicking on the Setup.exe file.
- Rams.exe, Uniplayer.exe, and Multiviewer.exe, QuickInstaller.exe icons will be placed on the desktop after a successful installation.

4.3 RAMS (Remote Access & Monitoring System)


4.3.1 Screen and button

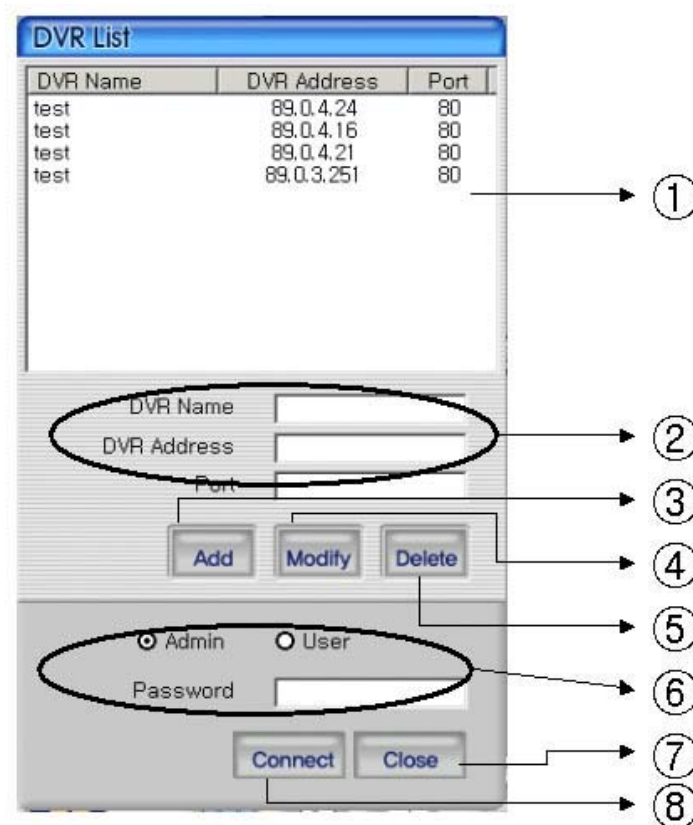


① Event indication icon (Motion, Sensor). The color will change upon event activation.
 (=> , =>)

- ② Screen display
- ③ Channel function button (On/Off, Capture, Record)
- ④ Channel selection button (1CH, 2CH, 3CH, 4CH, Quad)
- ⑤ Quad Capture, Quad Record button, sound On/Off, volume adjustment
- ⑥ Click to view program version and to upgrade DVR S/W
- ⑦ Time/date indicator
- ⑧ PC Hard disk information
- ⑨ Live view or Playback mode indicator
- ⑩ Connected DVR information indicator
- ⑪ Pan/Tilt, Zoom/Focus button
- ⑫ DVR Connect button, recording time setting button, UniPlayer link button, parameter setting button, Full Screen button, DVR recording button, DVR retrieve & backup button, DVR Setting button
- ⑬ Close program

4.3.2 Connecting to DVR

Click  icon to open the DVR list.



- ① This box allows the user to select the IP address assigned to the selected unit. This is required for making a network connection.
- ② To create a new IP address & DVR selection, enter the DVR name, DVR address, and port number.
- ③ Click Add to add the newly entered DVR information into the DVR list
- ④ After selecting a DVR Name from the list and making changes, click Modify to update the changes made to the item.
- ⑤ To remove an IP address/DVR Name , click and highlight the desired name, then press the Delete button to remove.
- ⑥ Enter the correct password for either Admin or User for the target DVR.
- ⑦ Click Close to exit the DVR List
- ⑧ Click Connect after correct password has been entered to connect to the desired DVR.

4.3.3 Channel On/Off

After connected, icon is changed to icon. Under this status, if users push icon, channel name & date displayed in front part of this screen will be phased out. Under bad network transmission condition, if users use selected channel, pre-allocated channel transmission will be better. If users enter this icon again, entered channel will appear.



=> Channel number 2 was turn off.

4.3.4 UniPlayer link



If you click this button on main menu, UniPlayer program will be executed.

Regarding the UniPlayer program, please refer to page 93

4.3.5 Full-screen display



If you push this icon in the main menu, full screen form appears.

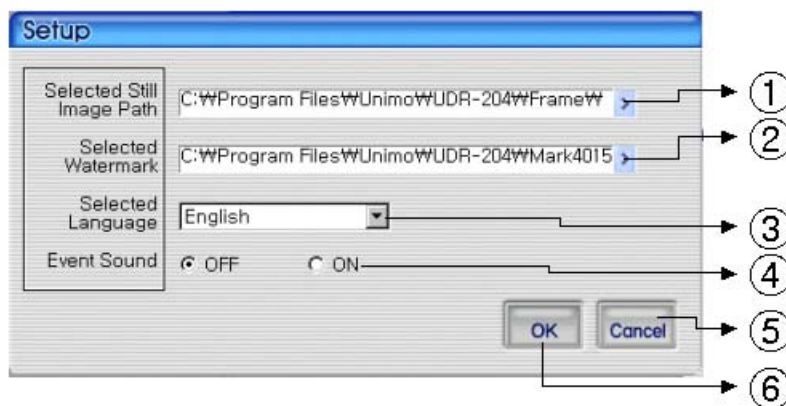


If users press the key of ESC, you will return to the selected screen.

4.3.6 Program setup



If users click this button in the main window, window of program setup appears.



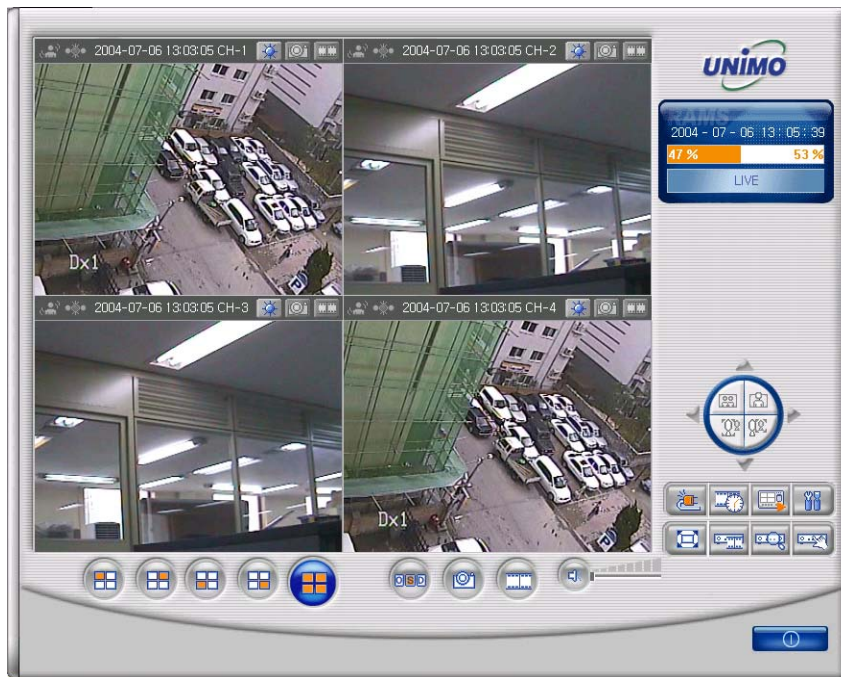
① Capture a still image and select a folder where the image is recorded

- ② Select the image of water mark to be input in the still image
- ③ Set up a program by user's language
- ④ Set up whether alarm occurrence is on or off when motion detection or sensor icon activated.
- ⑤ Close the window without saving the setup
- ⑥ Close the window after saving the setup

4.3.7 DVR recording



It works as recording button of DVR system. After logging in admin, button will be activated. Under recording mode at DVR, red icon will be displayed at the top of right at the window.



=> DVR (live viewing)

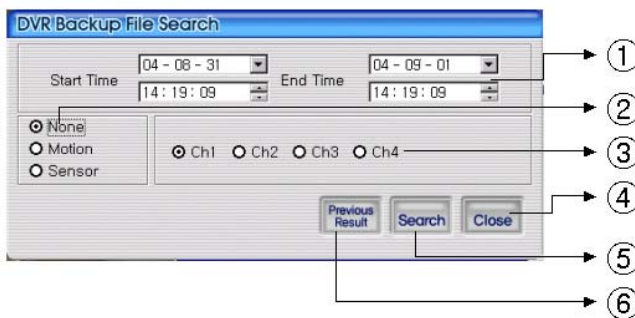
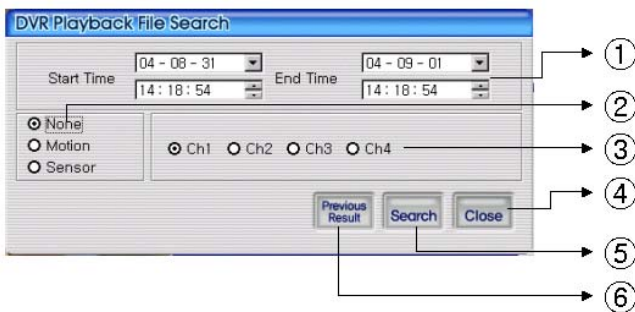


=> DVR (Recording mode)

4.3.8 DVR playback search



This button is used for playback search, playback, and backup functions for DVR and after logging in by admin.



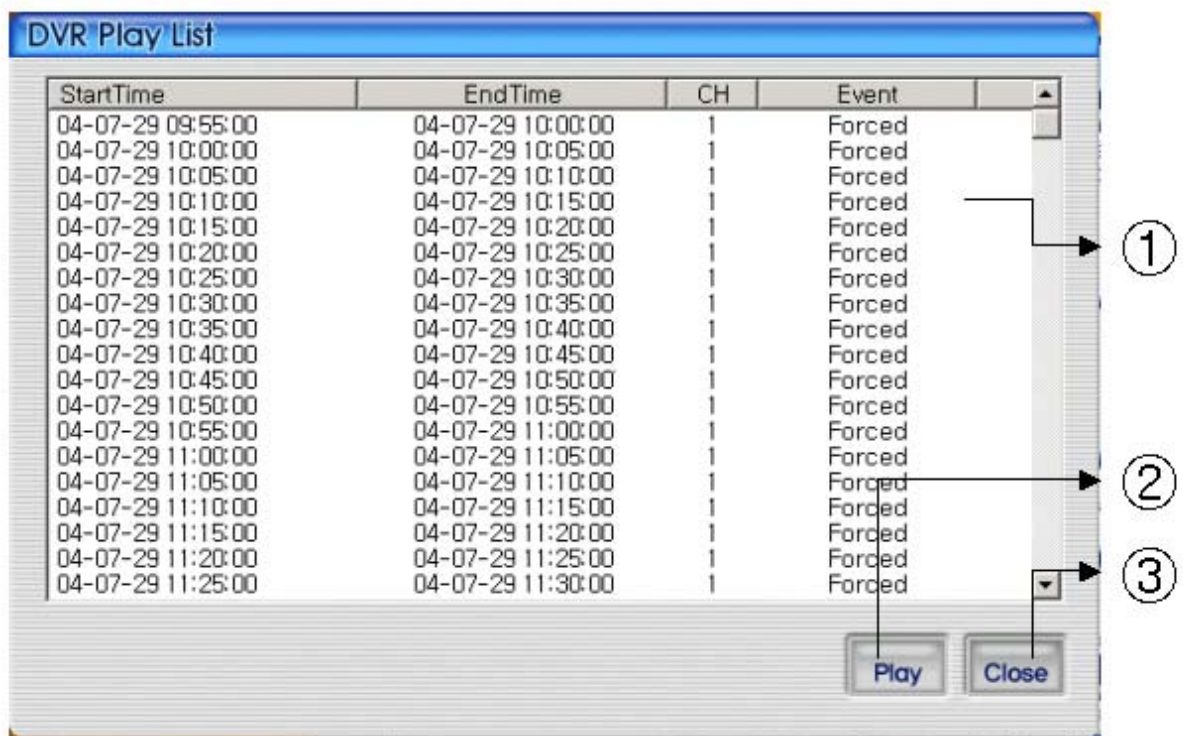
- ① Enter search time from start time to end time
- ② Check if user want to search event condition
- ③ Select targeted channel for search
- ④ Close DVR playback search
- ⑤ Start to search by selected searching condition
- ⑥ Previous research result will appears

4.3.9 DVR playback search



Search data will appear list form if users push two buttons at DVR

playback screen.




- ① DVR search files will appear recording start/end time, channel, and event information included
- ② Button for starting of backup. With pushing selected channel, start to playback.
Start to playback after pushing selected channel,. If do double click selected files, it starts to playback.
- ③ Close DVR backup window


Play After selecting a file at list, push play button or do double clicks in order to watch playback pictures.





- ① Change present mode to playback mode
- ② Display playback picture derived from DVR system
- ③ Button for reverse playback, pause, still, reverse phase, forward phase, slow, fast, previous search, next search
- ④ Comeback playback mode to Live viewing mode

 Reverse playback button

 Playback button

 Temporarily pause button

 Still image button

 When user use temporarily pause image file move to backward



When user use temporarily pause image file move to forward



Play stored files slowly. User can control by clicking this button



Play stored files quickly. User can control by clicking this button

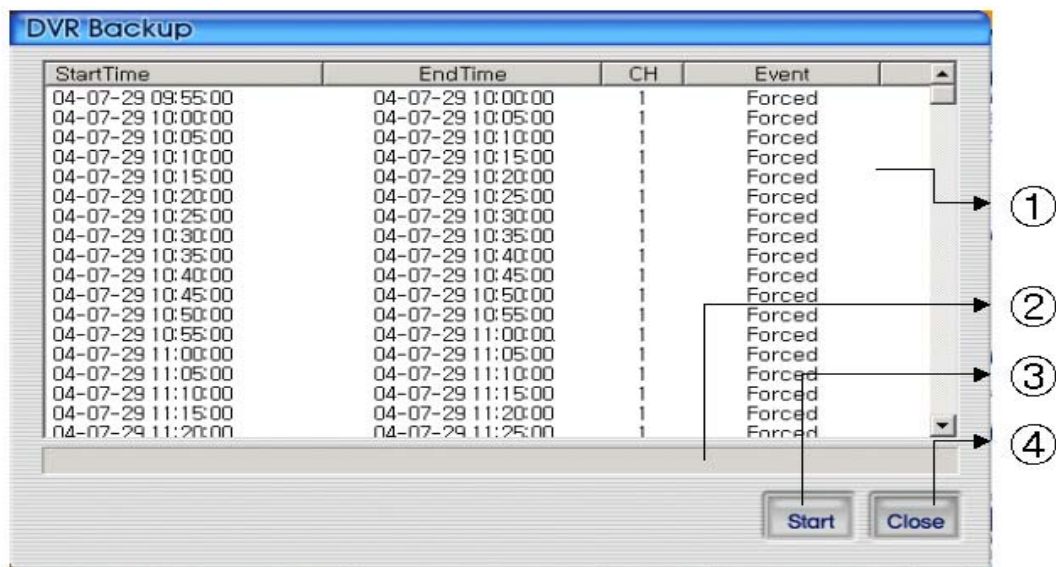


Playback button. Start playback previous files of present viewing files



Playback button. Start playback next files of present viewing files

4.3.10 DVR backup




- ① DVR search files will appear recording start/end time, channel, and event information included
- ② Indicator backup progress at backup
- ③ Button for starting of backup. With pushing selected channel, start to backup
- ④ Close DVR backup window



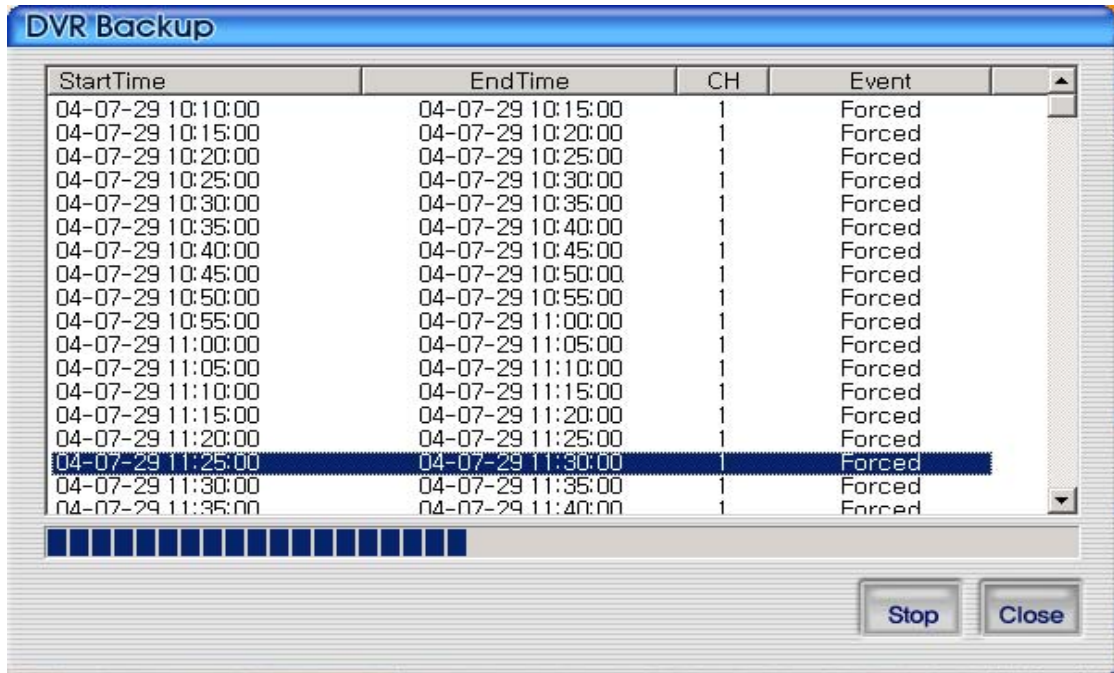
After selecting a file at DVR backup list, user can start to backup with pushing start button

The destination of backup files is below of backup folder located in directory of program

installed. After starting backup, button changes button, displays backup

progress rate. Even backup, users can stop it by pushing  button. Close DVR

backup window with pushing  button. (Even backup mode, it will be stopped & closed.)



4.3.11 DVR Setting

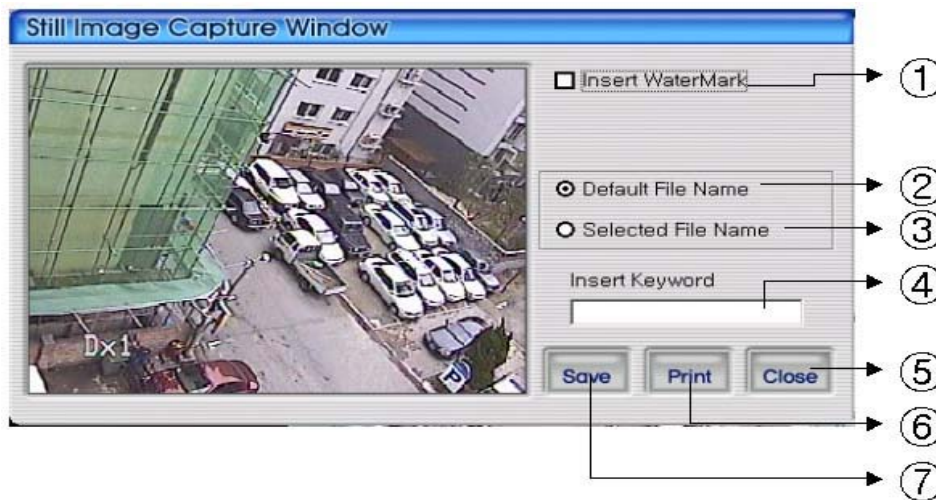


This button is for linking into quick installation program is used to manage setting parameter of DVR easily. It can be activated after logging in by admin.

4.3.12 Still image Capture



You can save playing image such as live viewing image, DVR playback image, into still image by capture. Besides users can capture image by pushing capture button for each channel or push capture button at the foot of a screen. Still image will be saved in a path frame directory established in RAMS's setup section screen. If user change storage path of still image at setup window, still image will be recorded to destination in the future.



- ① Select check box in order to insert watermark into still image capture
- ② Save still image as user defined default file name if chosen
- ③ Save still image as user selected new file name if chosen
- ④ Insert keyword to user easy searching
- ⑤ Close still image capture window
- ⑥ Print still image capture file
- ⑦ Save still image. The destination of recording is assigned at still image recording, folder through setup menu among RAMS program

4.3.13 Watermark insertion

Click the watermark checkbox then push the save button to save still image with watermark.

4.3.14 Printing still image

To print still image, please push  icon in capture screen.

4.3.15 Motion picture recording



With live viewing picture, motion picture recording and saving at local PC

User can record each channel by pushing record button on top right side of channel or pushing record button at below side of window. After pushing recording, record time setting window will be popup. Users can change it or not.






- ① Select the targeted channel changed recording time. Among this mode, Quad mean that timing choice for recording button on main menu
- ② Continuous recording until clients stop recording mode
- ③ Continuous recording until targeted minutes. Of course, it stopped manually by users
- ④ Continuous recording until targeted date & time. It stopped manually by users
- ⑤ For easy searching by keyword, client will insert keyword at search mode
- ⑥ Close record option window
- ⑦ After saving new selected recording option, automatically close it

With starting record, button  will be changed to  button

In order to stop recording, users just push record button again & record. The recording destination is record directory installed in Program.

4.3.16 D-Zoom

 Button is only for viewing one channel. Once users push this button and move to image screen, mouse cursor will change into cross shape. And D-Zoom button will change into  icon. At that time, users drag with mouse and if let it down, drag point will be zooming. If users push this button  one more time, it will convert original image.

4.3.17 PAN/TILT, ZOOM/FOCUS



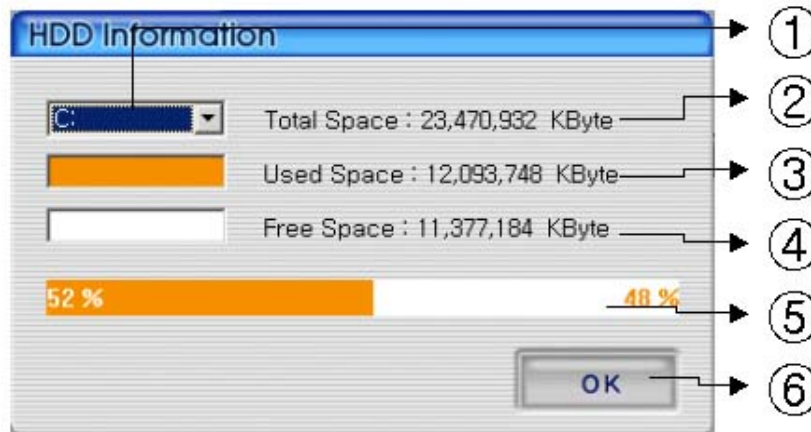
These buttons are for PAN/TILT, ZOOM/FOCUS function of DVR and after logging in by admin and/or one channel selected.

4.3.18 HDD Information



Orange: used parts of HDD,

White: remaining part of HDD. Detailed HDD information will be activated on pushing this icon.

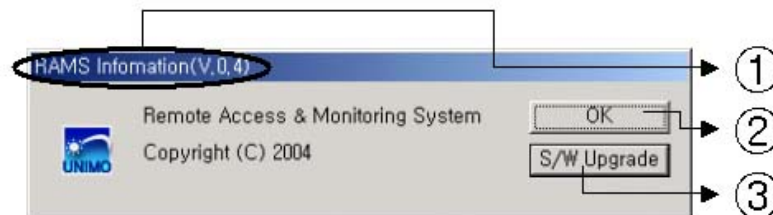


- ① Select hard disk
- ② It shows total capacity of HDD
- ③ It shows the used capacity of HDD used
- ④ It shows the capacity of HDD to be used
- ⑤ It shows the capacity of HDD used and to be used
- ⑥ Close the window

4.3.19 Check the program version



Click UNIMO Logo to check program version or do S/W upgrade of DVR system.

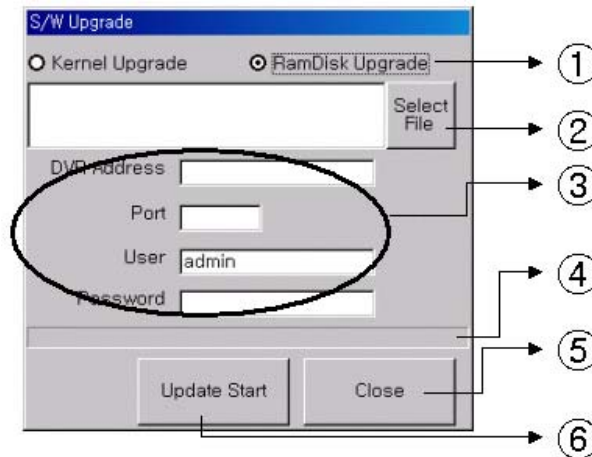


- ① Display the name & version of program

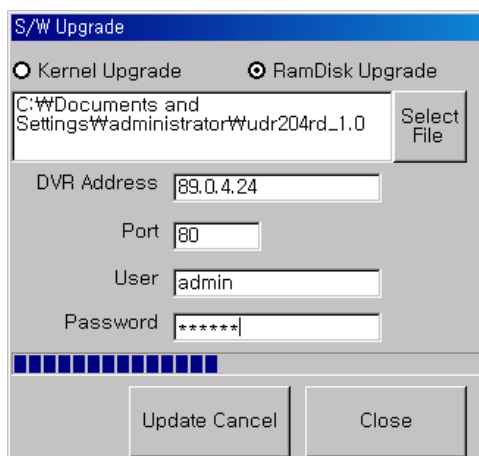
- ② Close the RAMS information window
- ③ Display S/W update window of DVR system

4.3.20 S/W upgrade of DVR

S/W upgrade window is activated on pushing S/W upgrade button in the program version check screen



- ① : Select targeted files to upgrade
- ② : Select targeted files saved in local PC
- ③ : Enter targeted DVR information such as DVR address, Port, user, and password (admin only)
- ④ : Indicator of targeted file's transmission status
- ⑤ : Close upgrade window
- ⑥ : Transmit targeted files. After that, changed to upgraded cancel (cancel of upgrade transmission)



=> Display status of SW Upgrade

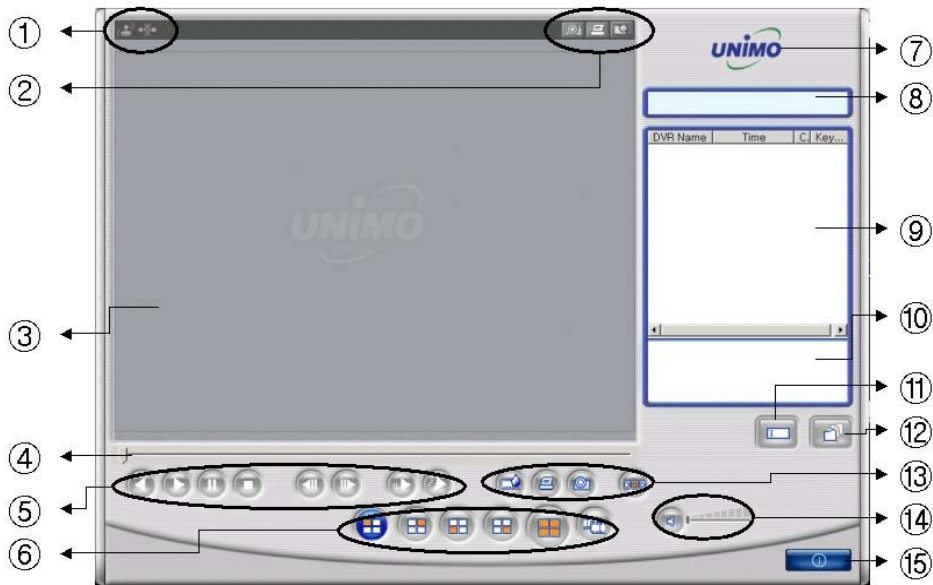
4.3.21 Close program



Closed Multiviewer program

4.4 UniPlayer

4.4.1 Screen and button



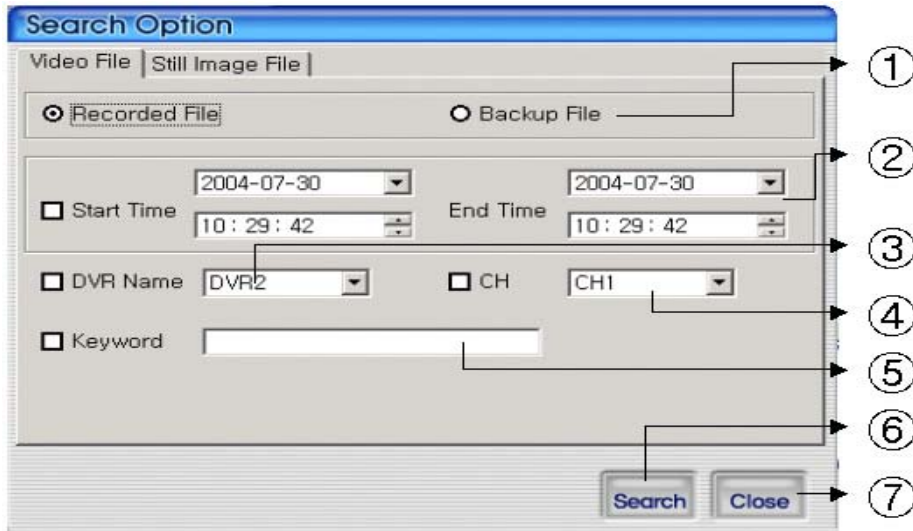
- ① Icon for event (Motion detection, Sensor). If events happen => , => the color of icon changes.
- ② Button per channel (Capture, Print, D-zoom)
- ③ Playback picture
- ④: Indicator for playback progress rate
- ⑤: Reverse playback, playback, still, pause, reverse phase, forward phase, slow, fast
- ⑥ Channel selection button (1CH, 2CH, 3CH, 4CH, Quad), Panorama playback button
- ⑦ Click the logo to check program version
- ⑧ Uniplay's status
- ⑨ Search list
- ⑩ File path is displayed if selected at search list
- ⑪ Button for user searching
- ⑫ :Button for directory based searching
- ⑬ Retrieve button for watermark, printing, Quad Capture
- ⑭ Button for sound On/Off, volume adjustment
- ⑮ Button for closing program

4.4.2 Search



Users access to search files after push this icon. As files are default mode, without knowing of files, users can access it.

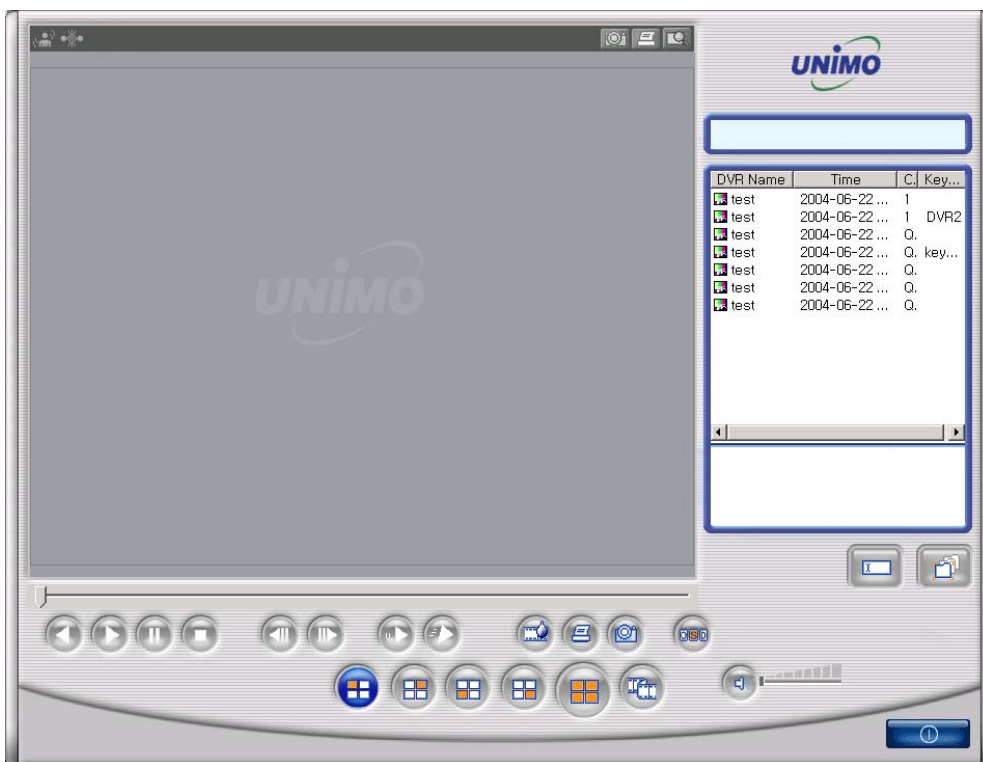
4.4.2.1 Search option from video image & backup file



- ① Select whether recording files at RAMS, Multiviewer or backup files
- ② Enter targeted recording date for search
- ③ Enter targeted DVR name for search
- ④ Enter targeted channel
- ⑤ Enter keyword to classification to list
- ⑥ Start to search accordingly
- ⑦ Close search option window

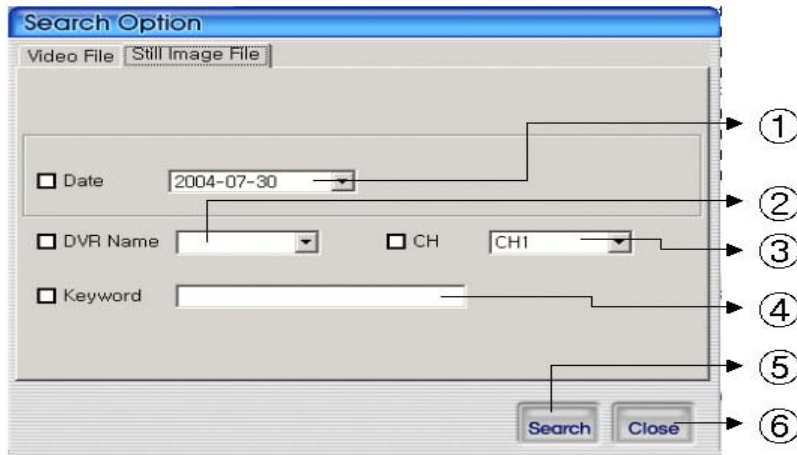


=> If there is nothing to special condition for searching, all files saved in recording folder will be displayed on search window after searched.



=> Search window after selected channel number 1 as search option.

4.4.2.2 Search option for still image



- ① Enter targeted recording date for search
- ② Enter targeted DVR name for search
- ③ Enter targeted channel
- ④ Enter keyword to classification to list
- ⑤ Start to search accordingly
- ⑥ Close search option window



=> If there is nothing to special condition for searching, all still images saved in folder will be displayed on search window after searched.

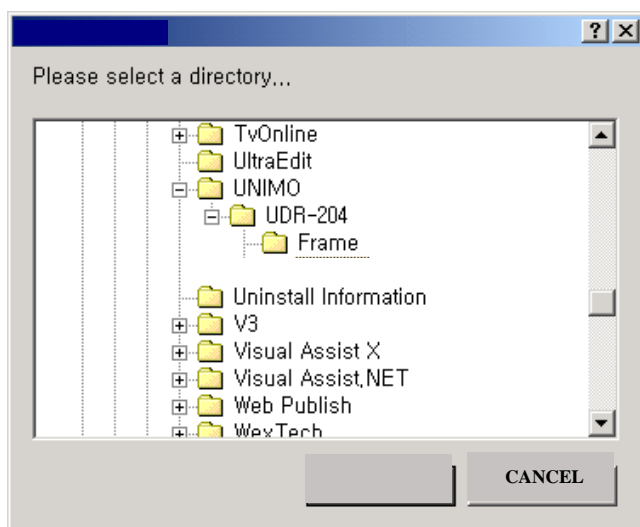


=> Search window after selected channel number 1 & selected date (June 22.004) as search option.

4.4.3 Searching by directory



You can use it when you know the directory has AVI file or still image file. It will be set up default directory at first. After that users can choose their own directory than see all folder user want to save will be on the list.



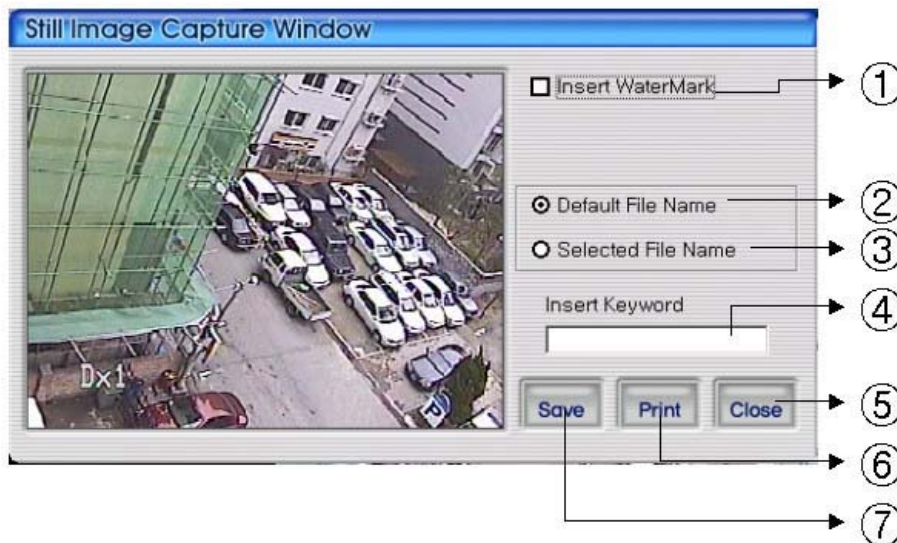


=> AVI file Playing screen by searching scene

4.4.4 Still Image Capture



Save replaying images into still image by capture. Besides users can capture image by push capture button for each channel or push capture button at the foot of a screen. Still image will be saved in a path of which is established in RAMS's setup section screen



- ① Select check box in order to insert watermark into still image capture
- ② Save still image as user defined default file name if chosen
- ③ Save still image as user selected new file name if chosen
- ④ Insert keyword to user easy searching
- ⑤ Close still image capture window
- ⑥ Print still image capture file
- ⑦ Save still image. The destination of recording is assigned at still image recording folder through setup menu among RAMS program

4.4.5 Input water mark

Click the Water Mark checkbox then push the save button to save still image with watermark.




4.4.6 Printing still image

To print still image, please push the  button in capture screen. Then use this



button in main page. But In the motion picture state, this button only is applicable to pause or temporarily pause mode.

4.4.7 D-Zoom Function

 Button is for only viewing one channel. Once user push this button and move to image screen, mouse cursor will change into cross shape. And D-Zoom button will change into . At that time, users drag with mouse and if let it down, drag point will be zooming. If users push this button  one more time, it will convert original image.

4.4.8 Moving picture file playback, playing, pause, temporarily pause, move by interval of frame, fast forward Playing



Playing-back image file

Playing image file

Temporarily pause image file

Pause



When user use temporarily pause image file, move to backward



When user use temporarily pause image file, move to forward.



Play file slowly. Users can control by click this button.



Play file quickly. User can control by click this button.

4.4.9 Water mark drawing




When still image is display, if push this button watermark will be drawn. If you find

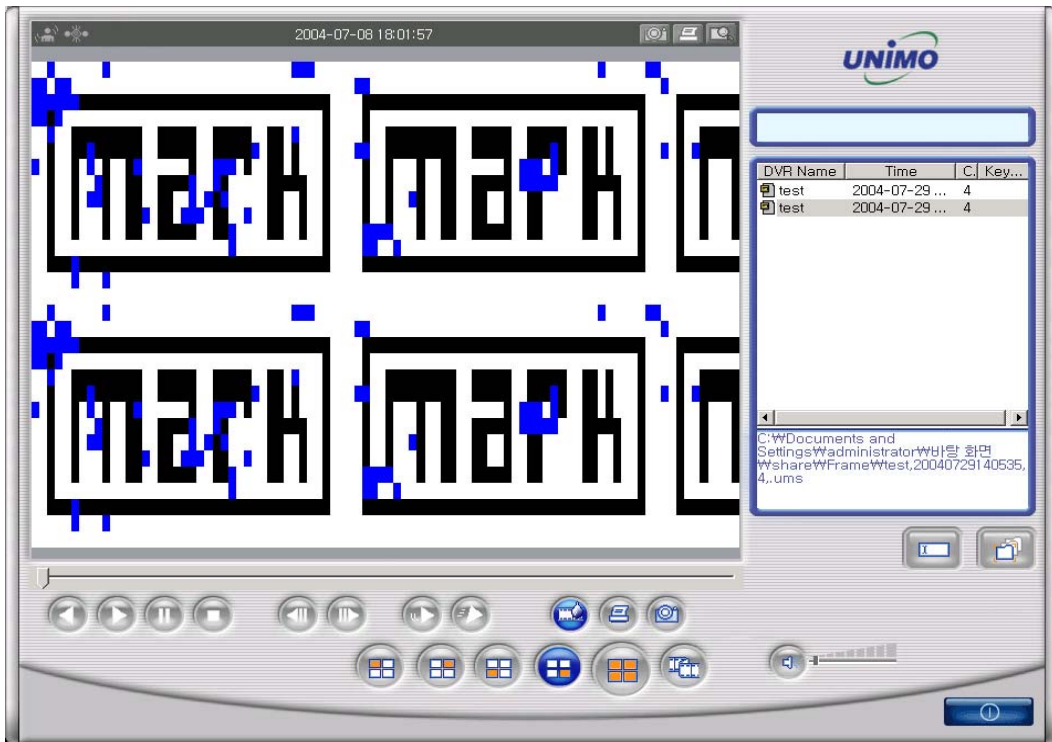
other color except black, white, blue color, image file must get damaged.



Push this button one more time, reverts to original image state.



=> Still image Display screen. Push this button , water mark will be drawn.



⇒ Watermark viewing screen. If you find other color except black, white, blue color, image file must get damaged.

4.4.10 Panorama



You can see the panorama screen when you push this button while file playing.



(Button will change into like this button. And & button can help user to view screen while control screen back and forth. And click the one screen which is one of the 16 channel, you can see 640x480 image. If you want to come out of the panorama mode,



click button. Then program will go back to former state.



=> Screen in panorama mode.

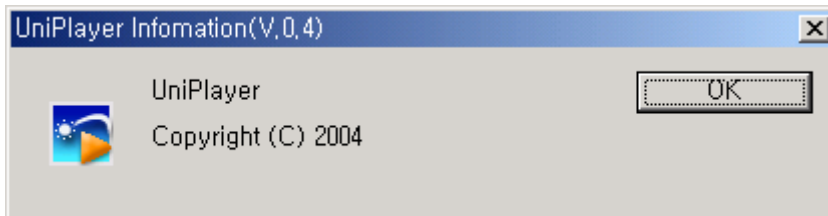


=> Image when click one screen in panorama mode.

4.4.11 Check the program version.



Click Unimo logo to confirm version.



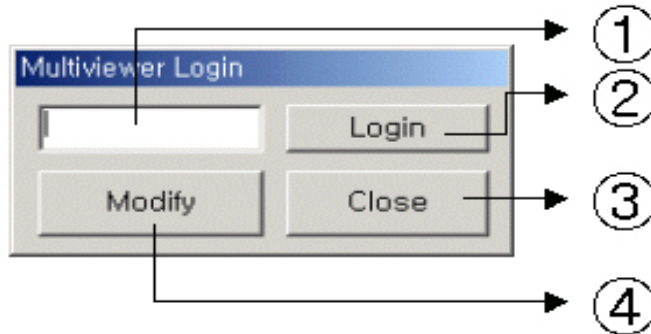
4.4.12 Close Program



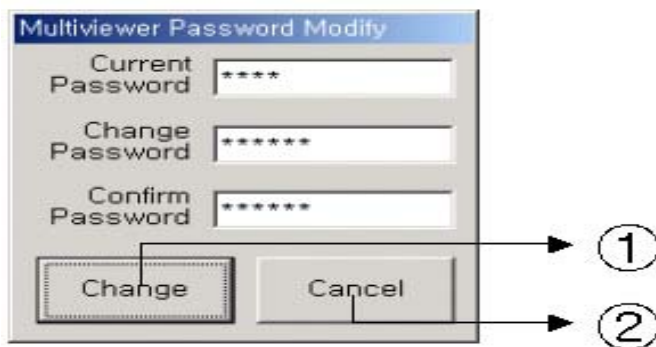
Close UniPlayer program

4.5 MultiViewer

4.5.1 Program login



- ① Insert program password.
- ② If inserted password is right, multiviewer runs.
- ③ Close program
- ④ Modify program password.



- ① After inserting current password, change password, & confirm password accordingly, changes program pass.
- ② Closing window without changing. Return to login window

4.5.2 Screen and Button

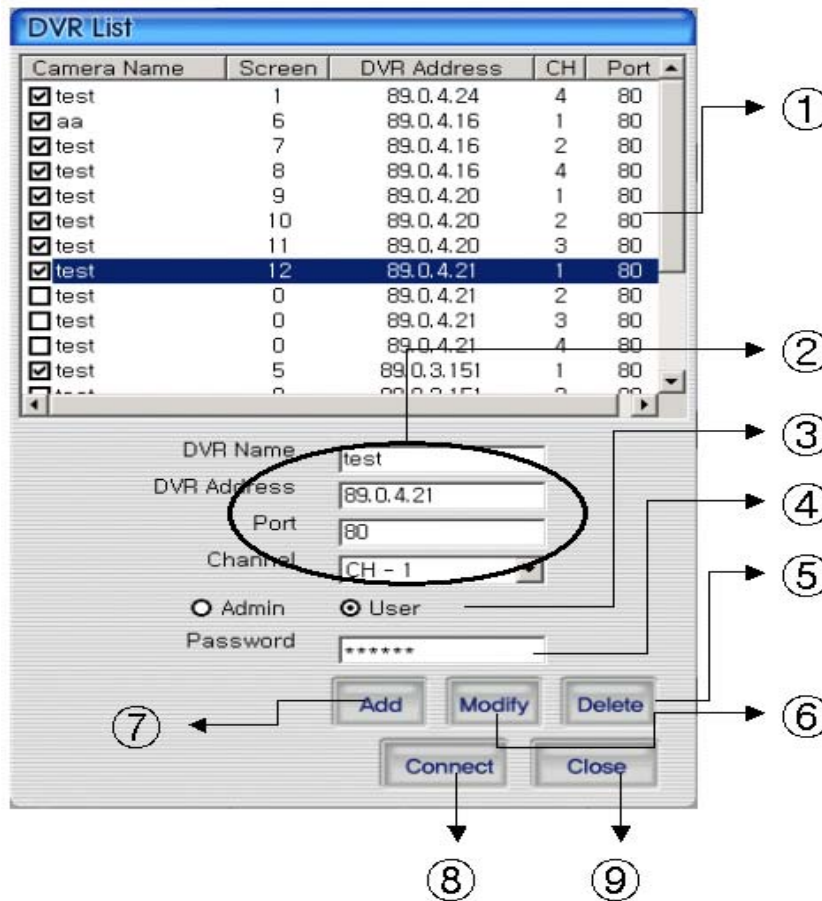


- ① ICON for Event (Motion, Sensor): If an Event is activated, => , => the color of icons change.
- ② BUTTON for channel (Connect/Disconnect, Capture, Record)
- ③ Channel SCREEN
- ③ Click on UNIMO logo to check the version of program
- ⑤ Actual Time shows.
- ⑥ Information of Hard Disk of PC shows
- ⑦ Button for dividing screen (4 screen, 9 screen, 16 screen)
- ⑧ Button for DVR list, Full Screen, Recording time, Setting-up, link to UNI-Player
- ⑨ Button for Pan/Tilt, Zoom/Focus
- ⑩ Button for closing program

4.5.3 DVR LIST management & connection



If users click this button in the main screen, DVR List management & connection window appear.




- ① DVR List that user recorded, appears.
- ② Input DVR name, IP address, domain name, port
- ③ Input id name
- ④ Input id password
- ⑤ Delete the information selected in DVR List
- ⑥ Modify the information of DVR List
- ⑦ Add the information in DVR List
- ⑧ Connect to the selected DVR ID
- ⑨ Close the screen, after storing DVR List




=> Connected screen

=> If connection is impossible, it displays error defectives on screen.

4.5.4 Camera On/Off

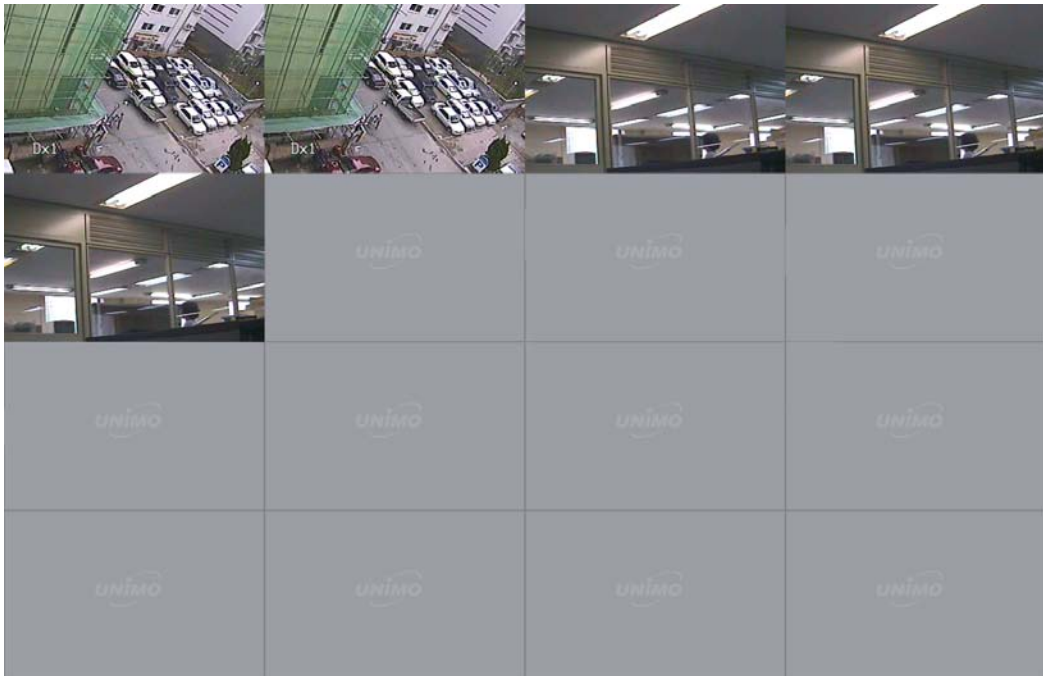
In order to connect to DVR in the main screen, please click  button, and select DVR,

and log in. After connection, please click one more time , and DVR is disconnected.

4.5.5 Full Screen



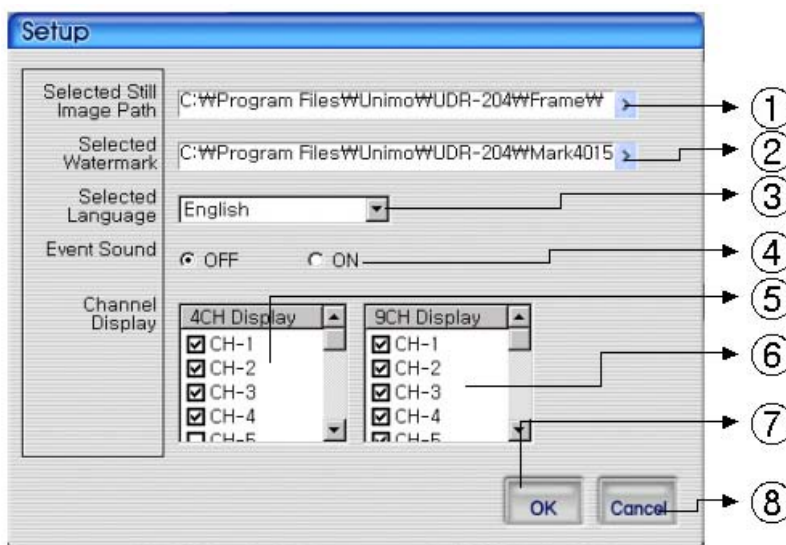
Click the Full Screen button to open a screen in full view. Press ESC to return.



4.5.6 Program Setup



Click to launch Setup.



- ① Indicates the file location of the captured still Image
- ② Indicates the file location of the watermark image to be inserted in the still image
- ③ Select language
- ④ Set up whether alarm occurrence is on or off when motion detection or sensor icon activated.
- ⑤ Check the image among 4channels
- ⑥ Check the image among 9 channels
- ⑦ Close the Screen after storing the setup
- ⑧ Cancel the Screen without storing the setup

4.5.7 Link with UniPlayer



Click this button in the main screen to start Uniplayer.
Please refer to the UniPlayer section.

4.5.8 PAN/TILT, ZOOM/FOCUS



These buttons are for PAN/TILT, ZOOM/FOCUS of DVR.
After logging in by admin, please select one channel.

4.5.9 HDD Information



ORANGE: used parts of HDD,

WHITE: remaining part of HDD. This menu indicate the detailed HDD information

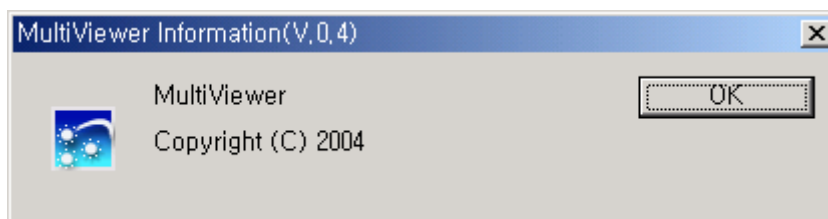


- ① Select HDD disk
- ② It shows total capacity of HDD
- ③ It shows the used capacity of HDD
- ④ It shows the free capacity of HDD
- ⑤ It shows both the used capacity of HDD and free space
- ⑥ Click to close the screen

4.5.10 Confirmation of Version of Program



Click the UNIMO logo to check the program version.



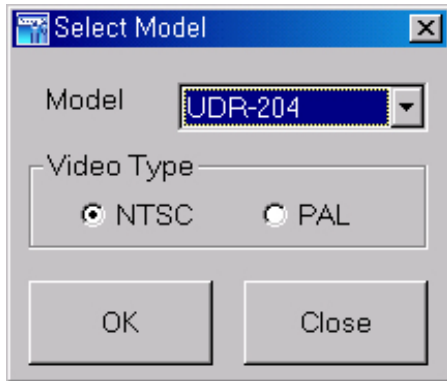
4.5.11 Closing of Program



Click to close the Multiviewer program

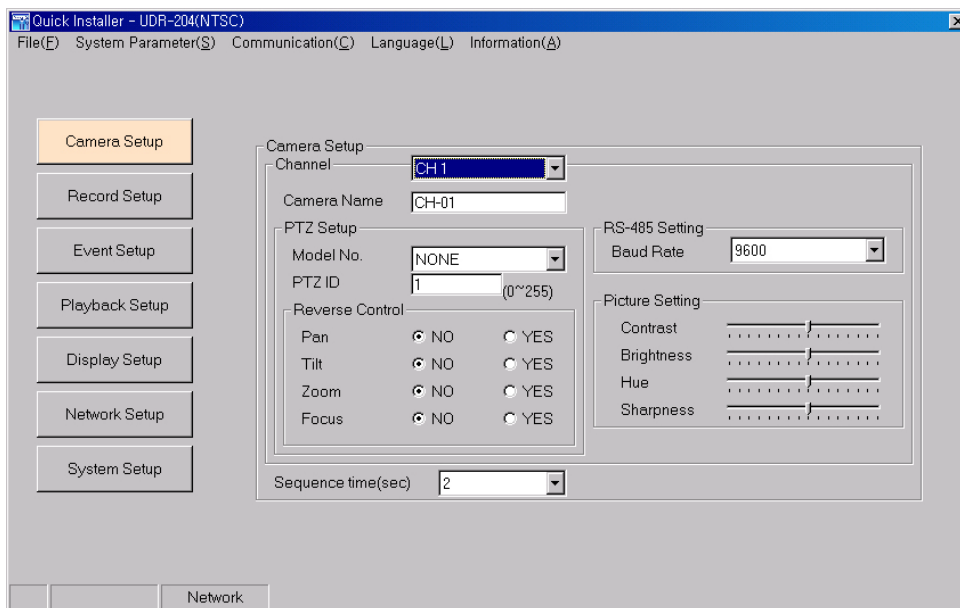
4.6 Quick Installer

4.6.1 Select model



Clicks to select DVR model name and video type in order to set system parameters.

4.6.2 System parameter setting



* Right parts on System parameter setting window is same form as Main menu used in DVR system. Users can change DVR system parameter by entering each menu.

* Main menu description

* File ->Open: Read to display saved parameter values from DVR system.

1. File ->Save: Click to save setting parameter values as file.
2. File->Close: Click to close program
3. System parameter-> Read parameters from DVR: Derive to display setting parameter values

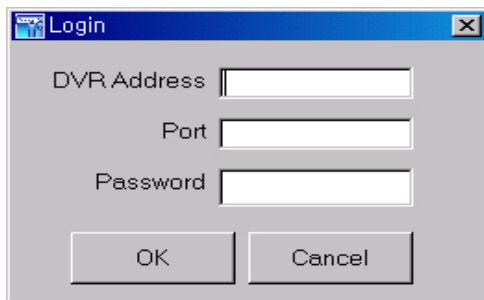
4. System parameter-> Write parameters to DVR: Transfer to save setting parameters of DVR.
5. System parameter->Default value setting: Initialize parameters values.
6. Communication->Network: Communicate data through network.
7. Communication->Serial: Communicate data through serial port (Setting preferable ComPort)
8. Language: Click to select preferable language
9. Information: Click to display program version information.

4.6.3 Communication over Network or serial port

Click to open system parameter -> Write to DVR

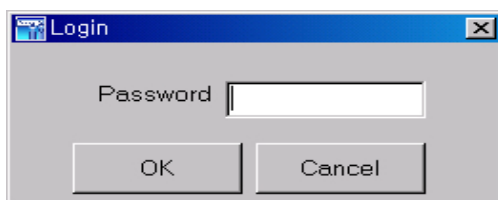
The below window will be activated on

- After Setting system parameters
- Derive system parameters from DVR



=> Network mode as communication media

Enter assigned network access password for Admin. After authenticated, users can communication between DVR using network.



=>Serial mode as communication media

Enter assigned network access password for Admin. After authenticated, users can communication between DVR using serial port.

5. Appendix

5.1 Installing HDD

5.1.1 Installing single hard disk drive

The following procedure is for installing either one internal HDD or one removable HDD. Please note that the Jumper setting must be set to MASTER.

To Install a single HDD in the Removable Bay, please follow these steps

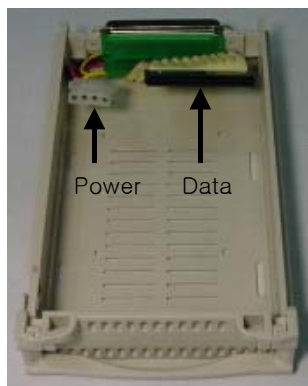


- Prepare one HDD. Verify the Jumper setting. It must be set to “Master”.



Jumper Setting
(Master)

- Open the cover of the Removable Bay. Connect the HDD power cable and the Data signal cable.



- Insert the HDD in the Rack and close the cover.



- Slide-in the Removable Bay in to the DVR



- Lock the Removable Bay.



5.1.2 Installing two hard disk drives.

- The Jumper setting should be done as follows:
 - The Internal HDD: Master
 - The Removable Bay HDD: Slave
- Mount the HDD in the internal slot.



- Once the HDD has been firmly mounted in the DVR, connect the power cable and the data cable.



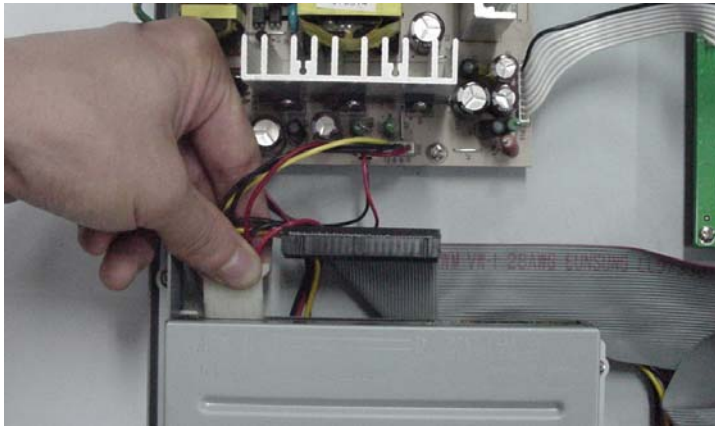
- To install the second HDD in the Removable Bay, set the Jumper setting on the removable HDD to Slave. Follow the procedure as listed in paragraph 1.1.1 of Appendix V.

5.1.3 Installing CD-RW drive

- To install the CD-RW drive in the Removal Bay as backup purpose, set the Jumper setting on the CD-RW drive to Slave.]
- Mount the CD-RW drive in the Removable Bay then connect to DVR system.



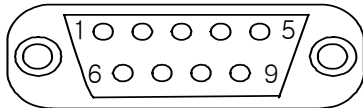
- Once the CD-RW drive has been firmly mounted in the DVR, connect the power cable (4pin) and the data cable(40pin).



- The CD-RW drive installed in the DVR system

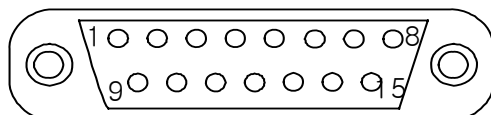
5.2 Terminal Information

5.2.1 DSUB-9P (RS-232)



No	Name	Description
2	RXD	Receive Data
3	TXD	Transmit Data
5	GND	Signal Ground

5.2.2 DSUB-15P (PTZ / AUX / ALARM / SENSOR)



No	Name	Description	No	Name	Description
1	RS-485+	RS-485 Transmit Data +	9	Alarm Out	Alarm Out (NO)
2	RS-485-	RS-485 Transmit Data -	10	Alarm Out	Alarm Out (COM)
3	AUX1	Auxiliary In Port (RSI, ARI, RONOFFI)*	11	Alarm Out	Alarm Out (NC)
4	AUX2		12	Sensor1	NO/NC
5	AUX3	Auxiliary Out Port (ARO, RSTO, ERRO, DFO, RSO)*	13	Sensor2	
6	AUX4		14	Sensor3	
7	AUX5		15	Sensor4	
8	GND	Signal Ground			

* Abbreviation

RSI	Record Start In	RSTO	Record Start Out
RI	Alarm Reset In	ERRO	Error Out
RONOFFI	Record On Off In	DFO	Disk Full Out
ARO	Alarm Record Out	RSO	Record Status Out

5.3 Factory Default Value

5.3.1 Main Menu

Main menu	Menu			Default Value	Remarks		
	Sub menu1	Sub menu2	Sub menu3				
Camera Setup	Channel	Channel No		CH-1~CH-4			
	Camera Name			CH-1~CH-4			
	Camera Hide			Off			
	PTZ Setup	Model No			NONE	URX-500, PELCO-D, SENSORMATIC, VICON, SUNGJIN MRX-1000 SRX-100B	
			PTZ ID		Channel No		
			Reverse Control	Pan		NO	
				Tilt		NO	
				Zoom		NO	
				Focus		NO	
			RS-485 Setting	Baud Rate		9600	
	Picture Setting	Default					
		Contrast			9 Level	Max. 16 Levels	
		Brightness			9 Level	"	
		Hue			9 Level	"	
		Sharpness			9 Level	"	
		Default					
	Sequence Time				2 sec		
	Record Setup	Record Type			MUX	MUX/QUAD	
		Resolution			MUX	360*240(NTSC) 360*288(PAL)	
					QUAD	720*480(NTSC) 720*576(PAL)	
Audio Sync				NONE			
Channel		Channel No			CH1		
		Quality			FINE	4 Levels	
	Frame Rate (FPS)			30			
	Record Mode			MANUAL			
Event Setup	Motion Detection Setting	Channel No		CH-1			
		Sensitivity		5 Level	8 Levels		
		Detection Zone		ALL			
	Sensor Setting	Sensor Type	N.O. / N.C.		N.O.		
		Channel Link	CH1~CH4		NONE		
	Alarm Output	Sensor1~Sensor4			OFF		
		Motion1~Motion4			OFF		
		Relay Time			0 sec		
	Post-Alarm Record				10 sec	10, 20, 20, 40, 50, 60 sec	
	FTP Setting	FTP Server IP			Blank		
ID				Anonymous			

		Password		Blank	
		Target Path		/	
		FTP Length of Image		5 sec	5, 6, 7, 8, 9, 10 sec
	FTP Trigger Setting	Sensor	CH1-CH4	OFF	
		Motion	CH1-CH4	OFF	
	E-Mail Address Setting	Receiver Address	1-4	Blank	
		Sender Address	1	Blank	
	E-Mail Setting	Send (Period)		NO	
		Prohibition Setting	YES / NO	NO	
			Start Hour	01	
			End Hour	01	
		SMTP Server IP		Blank	
		Authentication	YES / NO	NO	
			Password	Blank	
Event Log					
Playback Setup	Channel		CH1		
	Starting Point		LAST		
	Audio		ON		
Display Setup	Camera Name		ON		
	Date/Time		ON		
	HDD Status		ON		
	Borders		ON		
	Alpha Blending		4 Level	8 Levels	
Network Setup	DDNS Setup	DDNS Server1		211.104.85.235	
		Port		7100	
		DDNS Server2		221.139.14.109	
		Port		7100	
	Remote Connection Login Password	Admin		111111	
		User		111111	
	Network Type	STATIC	DDNS Link	OFF	
			Port	80	
			IP Address	192.168.1.200	
			Subnet Mask	255.255.255.0	
			Gateway	192.168.1.1	
			DNS IP	0.0.0.0	
		DHCP	Port	80	
	PPPoE	Port	80		
ID		dvr	Registered ID		
Password		111111	Registered PW		
DNS IP		0.0.0.0			
System Setup	DVR Name		4CH DVR		
	System Password	Password Setting		*****	111111
		Password Apply	Record Stop	OFF	
			Menu Enter	OFF	
			System Off	ON	
	Auto Key Lock		OFF		
	Time/Date	Time Setup(h/m/s)		Current Time	
		Date Setup		Current Date	
		Format	Time Format	24	
			Date Format	YYYY/MM/DD	
Day Light Saving Time		ON / OFF	OFF		

			Start Date (m/d)	01/01		
			End Date (m/d)	01/01		
			Apply Hour	00		
	Buzzer	Sensor		OFF		
		Motion		OFF		
		Video Loss		OFF		
	Language			ENGLISH		
	System Log					
	HDD Setup	Mounted HDD		1 or 2		
		Write Mode		Overwrite		
		Forced Deletion (days ago)		OFF	1~100	
		Internal HDD	Capacity		Used Cap. / Total Cap.	
			Format			
		Removable HDD	Capacity		Used Cap. / Total Cap.	
			Function		EXTENSION	
		Format				
	Aux Port	Active		HIGH / LOW	HIGH	
Function			IN	UNUSED		
			Out	UNUSED		
Factory Default						
S/W Upgrade	Ramdisk					
	Kernel					
Backup	Device	HDD / USB / CD RW		HDD		
	Start Time			Date : Date of Yesterday Time : Current Time		
	End Time			Date : Date of Today Time : Current Time		
	Channel			CH1		
	Event			NONE		
	Format				CD RW only	
System Info	Video Type			Current Type	NTSC, PAL	
	H/W Version			1.3.XX		
	S/W Version			2.X		
	Kernel Version			2.4.17_96		
	Mac Address			00:09:F8:XX:XX:XX		
	Audio					
	Language					

5.3.2 Search Menu

Main menu	Menu			Default Value	Remarks
	Sub menu1	Sub menu2	Sub menu3		
Search	Search by Time	Start Time		Date : Date of Yesterday Time : Current Time	
		End Time		Date : Date of Today Time : Current Time	
		Channel		CH1	
		Event		NONE	
	Still Image Search				
	Backup HDD Search	Start Time		Date : Date of Yesterday Time : Current Time	
		End Time		Date : Date of Today Time : Current Time	
		Channel		CH1	
		Event		NONE	

5.4 Protocol

5.4.1 Code table

No	Protocol	Description	Remarks
1	kmute	Audio Mute	
2	krec	Record	
3	khdd	HDD Information	
4	knet	Network user information	
5	klog	Log Display	
6	kinfo	System Information	
7	knum1	Number 1	
8	knum2	Number 2	
9	knum3	Number 3	
10	knum4	Number 4	
11	knum5	Number 5	
12	knum6	Number 6	
13	knum7	Number 7	
14	knum8	Number 8	
15	knum9	Number 9	
16	knum0	Number 0	
17	kseq	Sequence	
18	kmulti	Multi	
19	klock	Lock	
20	kdvr	DVR	
21	ksearch	Search	
22	kmenu	Menu	
23	kup	Up	
24	kdown	Down	
25	kleft	Left	
26	kright	Right	
27	kok	Ok	
28	krplay	R.Play	
29	kstop	Stop	
30	kplay	Play	
31	kpause	Pause	
32	kptz	PTZ	
33	kfrz	Freeze	
34	kzoom	Zoom	
35	kosd	OSD	
36	k4ch	4ch Devision	
37	k6ch	6h Devision	
38	k8ch	8h Devision	
39	k16ch	16 Devision	
40	kshold	Shuttle Hold	
41	ksr8	Shuttle Right 8Step	
42	ksr7	Shuttle Right 7Step	
43	ksr6	Shuttle Right 6Step	
44	ksr5	Shuttle Right 5Step	
45	ksr4	Shuttle Right 4Step	
46	ksr3	Shuttle Right 3Step	
47	ksr2	Shuttle Right 2Step	
48	ksr1	Shuttle Right 1Step	
49	ks0	Shuttle Right 0Step	

50	ks1	Shuttle left 1Step	
51	ks2	Shuttle left 2Step	
52	ks3	Shuttle left 3Step	
53	ks4	Shuttle left 4Step	
54	ks5	Shuttle left 5Step	
55	ks6	Shuttle left 6Step	
56	ks7	Shuttle left 7Step	
57	kjleft	Jog left	
58	kjright	Jog right	
59	kpower	Power	

5.4.2 Usage

- System protocol to control UDR-204 from remote client software installed in PC or remote controller.
- It maps button function of remote controller with front key in the front panel of UDR-204. If user add English letters assigned protocol paragraph and \n(new line and transmit ASCII Code form, UDR-204 will be activated same as for user to push one of pad or remote controller.

5.5 HDD recording time table

(Based on recording mode, Resolution, picture Quality, FPS)

TV System	Record Mode	Resolution	Quality	Frame Rate (fps/CH)	Recording time per HDD capacity (HR)				
					80GB	120GB	160GB	200GB	300GB
NTSC	MUX	360*240	Super Fine	30	39.4	58.1	79.3	97.4	145.7
				15	82.0	120.8	165.0	202.7	303.0
				7	166.9	245.9	336.0	412.8	617.0
			Fine	30	60.4	89.0	121.6	149.4	223.3
				15	133.0	196.0	267.8	329.1	491.8
				7	278.1	409.9	559.9	688.0	1028.4
			Enhanced	30	82.7	121.9	166.5	204.6	305.7
				15	180.0	265.2	362.3	445.2	665.4
				7	417.2	614.8	839.9	1032.1	1542.6
		Normal	30	103.1	152.0	207.6	255.1	381.3	
			15	213.5	314.6	429.7	528.0	789.2	
			7	483.1	711.9	972.5	1195.0	1786.2	
		720*480	Super Fine	7	44.3	65.3	89.3	109.7	163.9
				5	67.0	98.7	134.9	165.7	247.7
				3	100.9	148.6	203.1	249.5	372.9
			Fine	7	65.6	96.6	132.0	162.2	242.4
				5	99.8	147.0	200.9	246.8	368.9
				3	150.5	221.7	302.9	372.2	556.3
	Enhanced		7	80.5	118.7	162.1	199.2	297.7	
			5	119.2	175.7	240.0	294.9	440.7	
			3	176.5	260.1	355.4	436.6	652.6	
	Normal	7	90.9	133.9	183.0	224.8	336.0		
		5	133.0	196.0	267.8	329.1	491.8		
		3	204.0	300.6	410.6	504.6	754.2		
	QUAD	720*480	Super Fine	30	45.6	67.1	91.7	112.7	168.4
				15	81.2	119.7	163.5	200.9	300.3
				7	204.0	300.6	410.6	504.6	754.2
			Fine	30	68.5	100.9	137.9	169.4	253.3
				15	124.9	184.0	251.4	308.9	461.7
				7	274.0	403.8	551.6	677.8	1013.1
			Enhanced	30	85.8	126.4	172.7	212.2	317.2
				15	156.9	231.2	315.9	388.1	580.1
				7	346.4	510.4	697.3	856.8	1280.6
			Normal	30	96.6	142.4	194.5	239.0	357.2
				15	178.2	262.7	358.8	440.9	659.0
				7	399.1	588.1	803.4	987.2	1475.5

TV System	Record Mode	Resolution	Quality	Frame Rate (fps/CH)	Recording time per HDD capacity (HR)				
					80GB	120GB	160GB	200GB	300GB
PAL	MUX	360*280	Super Fine	25	42.5	62.6	85.5	105.1	157.1
				12	71.2	104.9	143.2	176.0	263.1
				6	141.2	208.1	284.3	349.3	522.1
			Fine	25	61.6	90.8	124.0	152.4	227.8
				12	125.7	185.3	253.1	311.0	464.9
				6	223.9	329.9	450.7	553.8	827.7
			Enhanced	25	98.7	145.4	198.7	244.1	364.9
				12	183.6	270.5	369.6	454.1	678.7
				6	306.0	450.9	615.9	756.8	1131.2
		Normal	25	120.8	178.0	243.1	298.8	446.5	
			12	241.5	356.0	486.3	597.5	893.1	
			6	367.1	541.1	739.1	908.2	1357.5	
		720*576	Super Fine	6	46.8	69.0	94.3	115.8	173.1
				4	74.0	109.1	149.0	183.1	273.7
				3	92.7	136.6	186.6	229.3	342.8
			Fine	6	67.0	98.7	134.9	165.7	247.7
				4	108.0	159.1	217.4	267.1	399.3
				3	129.3	190.5	260.3	319.8	478.0
	Enhanced		6	81.2	119.7	163.5	200.9	300.3	
			4	125.7	185.3	253.1	311.0	464.9	
			3	153.0	225.4	308.0	378.4	565.6	
	Normal	6	90.9	133.9	183.0	224.8	336.0		
		4	137.0	201.9	275.8	338.9	506.5		
		3	170.0	250.5	342.2	420.5	628.5		
	QUAD	720*576	Super Fine	25	51.0	75.1	102.7	126.1	188.5
				12	72.0	106.1	144.9	178.1	266.2
				6	158.3	233.2	318.6	391.5	585.1
			Fine	25	75.9	111.8	152.7	187.6	280.5
				12	132.1	194.6	265.9	326.7	488.3
				6	211.0	311.0	424.8	522.0	780.2
			Enhanced	25	91.3	134.6	183.9	225.9	337.7
				12	163.9	241.5	330.0	405.5	606.0
				6	262.2	386.5	528.0	648.7	969.6
		Normal	25	102.0	150.3	205.3	252.3	377.1	
			12	187.3	276.1	377.1	463.4	692.6	
			6	306.0	450.9	615.9	756.8	1131.2	

UNIMO Technology Co.,Ltd.

479-12 Bangbae-3Dong, Seocho-Gu, Seoul, KOREA 137-820

TEL: 82-2-3470-4490~4499, FAX : 82-2-581-3107

E-Mail: jsoh@unimo.co.kr, www.unimo.co.kr